

N/F  
**CHARLES E. BICKFORD,  
 BARBARA A. BICKFORD  
 & DALE AND JULIE BICKFORD**  
 BK. 63, PG. 116  
 JAN. 6, 2003  
 BR #18

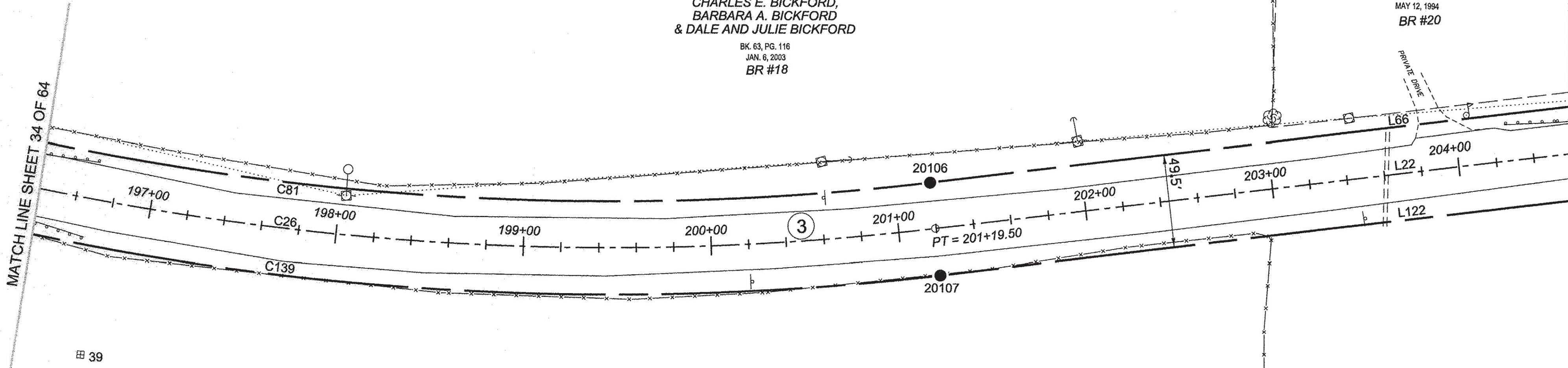
N/F  
**DAVID A. COUTU  
 & JANIE L. COUTU**  
 BK. 45, PG. 311  
 MAY 12, 1994  
 BR #20

N/F  
**CHARLES E. BICKFORD,  
 BARBARA A. BICKFORD  
 & DALE AND JULIE BICKFORD**  
 BK. 63, PG. 116  
 JAN. 6, 2003

N/F  
**MEADOWCREST  
 CAMPGROUND, LLC**  
 BK. 87, PG. 300  
 NOV. 17, 2010  
 BR #22

MATCH LINE SHEET 34 OF 64

MATCH LINE SHEET 36 OF 64

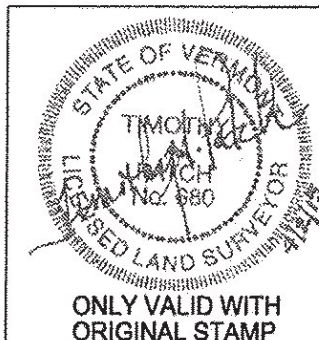


EB 39



**LEGEND:**  
 SEE SHEET 1 OF 64  
**NOTES:**  
 SEE SHEETS 2 & 3 OF 64  
**MONUMENT TABLE:**  
 SEE SHEETS 6,7,8 OF 64  
**ROW CENTER LINE TABLE:**  
 SEE SHEET 8 OF 64  
**ROW LIMIT LINE & CURVE TABLES:**  
 SEE SHEET 9 OF 64

I CERTIFY THAT THIS PLAT IS BASED ON INFORMATION ABSTRACTED FROM DOCUMENTS, PAROL EVIDENCE, AND PHYSICAL EVIDENCE. THE SURVEY WORK IDENTIFIED HEREON IS CONSISTENT WITH THIS INFORMATION.  
 I CERTIFY THAT THIS PLAT MEETS THE REQUIREMENTS OF 27 VSA SECTION 1403 AND COMPLIES WITH VERMONT BOARD OF LAND SURVEYORS RULES, PART 5.4 AND 5.5 ADOPTED UNDER 26 VSA SECTION 2544(A).  
 SIGNED: *Timothy A. Patch*  
 TIMOTHY A. PATCH, L.S. 680



**STATE OF VERMONT  
 AGENCY OF TRANSPORTATION**



**STATUTORY SURVEY**  
 TOWN OF MARSHFIELD  
**VERMONT US ROUTE 2**  
 APPROXIMATELY FROM PLAINFIELD  
 TOWN LINE TO CABOT TOWN LINE

SURVEYED:  
 SCC  
 ENGINEERING  
 REVIEWED:  
 TAP  
 DATE:  
 04/01/2015  
 SCALE:  
 1"=40'  
 FILE:  
 212x600ROW.DGN  
 SHEET NO.  
 35 OF 64

ORIGINAL DRAWING - INK ON POLYESTER FILM MEETING THE REQUIREMENTS OF 27 V.S.A. § 1403

PIN ID # 12X600

