

N/F  
DALE &  
JULIE BICKFORD  
BK. 42, PG. 505  
APRIL 17, 1992

N/F  
CHARLES E. BICKFORD,  
BARBARA A. BICKFORD  
& DALE AND JULIE BICKFORD  
BK. 63, PG. 116  
JAN. 6, 2003  
BR #18

N/F  
CHARLES E. BICKFORD,  
BARBARA A. BICKFORD  
& DALE AND JULIE BICKFORD  
BK. 63, PG. 116  
JAN. 6, 2003

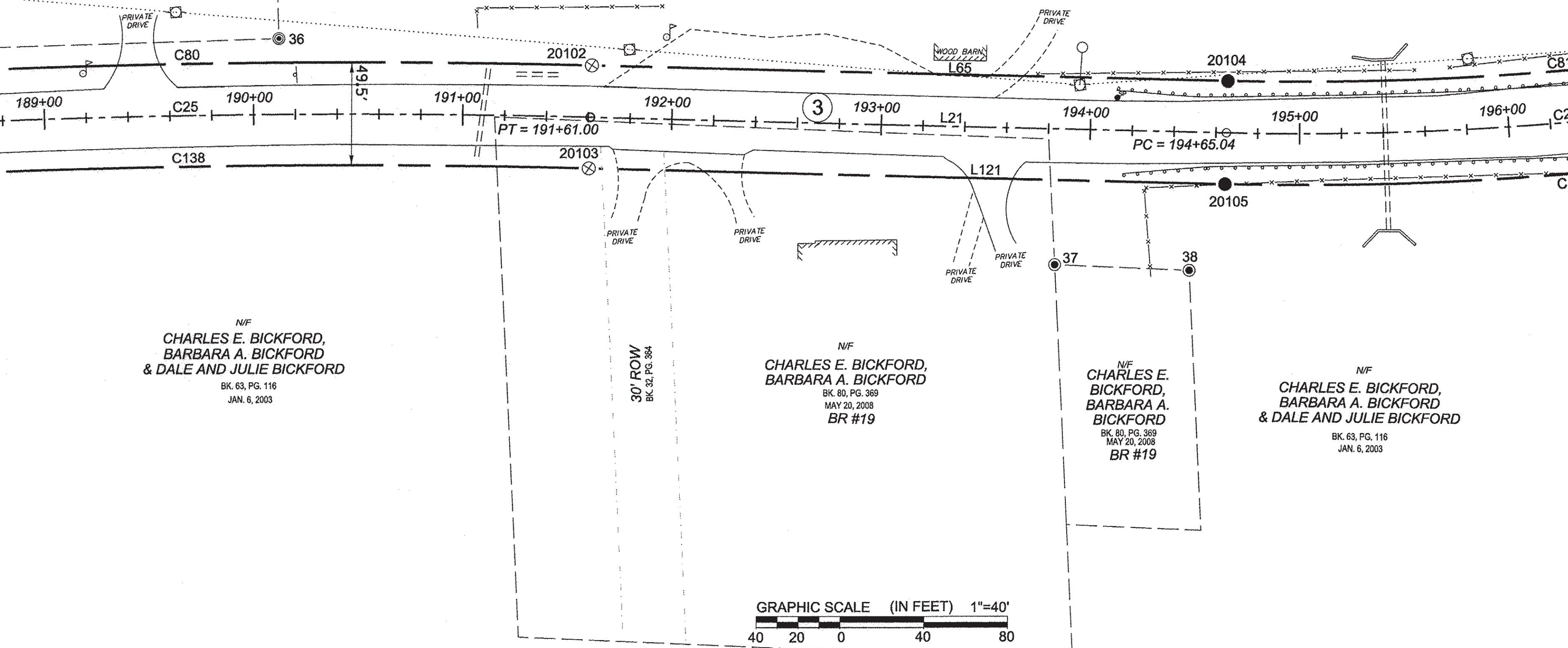
N/F  
CHARLES E. BICKFORD,  
BARBARA A. BICKFORD  
BK. 80, PG. 369  
MAY 20, 2008  
BR #19

N/F  
CHARLES E.  
BICKFORD,  
BARBARA A.  
BICKFORD  
BK. 80, PG. 369  
MAY 20, 2008  
BR #19

N/F  
CHARLES E. BICKFORD,  
BARBARA A. BICKFORD  
& DALE AND JULIE BICKFORD  
BK. 63, PG. 116  
JAN. 6, 2003

MATCH LINE SHEET 33 OF 64

MATCH LINE SHEET 35 OF 64



ORIGINAL DRAWING - INK ON POLYESTER FILM MEETING THE REQUIREMENTS OF 27 V.S.A. § 1403

PIN ID# 12X600

RECEIVED  
 APR 28 2015  
 MARSHFIELD, VERMONT  
 TOWN CLERK'S OFFICE

**LEGEND:**  
SEE SHEET 1 OF 64

**NOTES:**  
SEE SHEETS 2 & 3 OF 64

**MONUMENT TABLE:**  
SEE SHEETS 6, 7, 8 OF 64

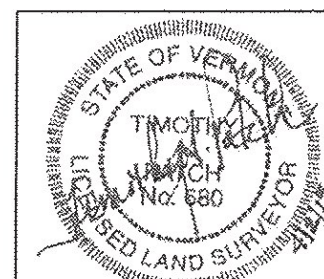
**ROW CENTER LINE TABLE:**  
SEE SHEET 8 OF 64

**ROW LIMIT LINE & CURVE TABLES:**  
SEE SHEET 9 OF 64

I CERTIFY THAT THIS PLAT IS BASED ON INFORMATION ABSTRACTED FROM DOCUMENTS, PAROL EVIDENCE, AND PHYSICAL EVIDENCE. THE SURVEY WORK IDENTIFIED HEREON IS CONSISTENT WITH THIS INFORMATION.

I CERTIFY THAT THIS PLAT MEETS THE REQUIREMENTS OF 27 VSA SECTION 1403 AND COMPLIES WITH VERMONT BOARD OF LAND SURVEYORS RULES, PART 5.4 AND 5.5 ADOPTED UNDER 26 VSA SECTION 2544(A)

SIGNED: *Timothy A. Patch*  
TIMOTHY A. PATCH, L.S. 680



ONLY VALID WITH ORIGINAL STAMP

**STATE OF VERMONT  
AGENCY OF TRANSPORTATION**



**STATUTORY SURVEY**  
TOWN OF MARSHFIELD  
**VERMONT US ROUTE 2**  
APPROXIMATELY FROM PLAINFIELD  
TOWN LINE TO CABOT TOWN LINE

SURVEYED:  
SGC  
ENGINEERING  
REVIEWED:  
TAP

DATE:  
04/07/2015

SCALE:  
1"=40'

FILE:  
z12x600ROW.DGN

SHEET NO.  
34 OF 64