

N/F
**CHARLES E. BICKFORD,
 BARBARA A. BICKFORD
 & DALE AND JULIE BICKFORD**
 BK. 63, PG. 116
 JAN. 6, 2003
 BR #18

N/F
**CHARLES E. BICKFORD,
 BARBARA A. BICKFORD
 & DALE AND JULIE BICKFORD**
 BK. 63, PG. 116
 JAN. 6, 2003
 BR #18

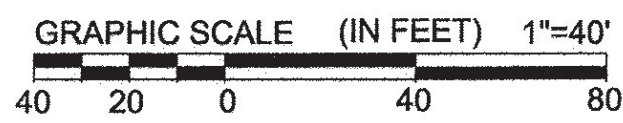
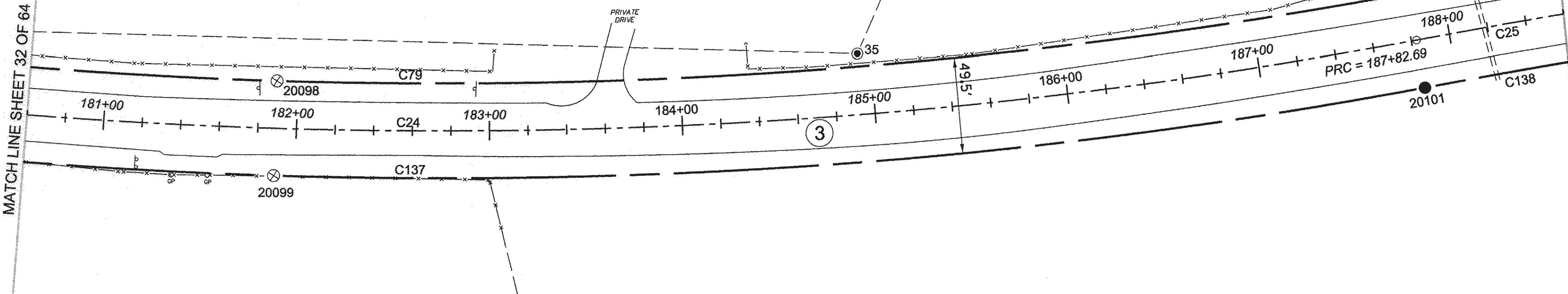
N/F
**DALE &
 JULIE BICKFORD**
 BK. 42, PG. 505
 APRIL 17, 1992

N/F
**CHARLES BICKFORD,
 BARBARA BICKFORD**
 BK. 56, PG. 453
 MAY 14, 1999

N/F
**CHARLES E. BICKFORD,
 BARBARA A. BICKFORD
 & DALE AND JULIE BICKFORD**
 BK. 63, PG. 116
 JAN. 6, 2003

MATCH LINE SHEET 32 OF 64

MATCH LINE SHEET 34 OF 64



LEGEND:
 SEE SHEET 1 OF 64

NOTES:
 SEE SHEETS 2 & 3 OF 64

MONUMENT TABLE:
 SEE SHEETS 6, 7, 8 OF 64

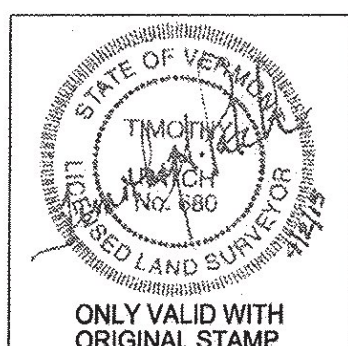
ROW CENTER LINE TABLE:
 SEE SHEET 8 OF 64

ROW LIMIT LINE & CURVE TABLES:
 SEE SHEET 9 OF 64

I CERTIFY THAT THIS PLAT IS BASED ON INFORMATION ABSTRACTED FROM DOCUMENTS, PAROL EVIDENCE, AND PHYSICAL EVIDENCE. THE SURVEY WORK IDENTIFIED HEREON IS CONSISTENT WITH THIS INFORMATION.

I CERTIFY THAT THIS PLAT MEETS THE REQUIREMENTS OF 27 VSA SECTION 1403 AND COMPLIES WITH VERMONT BOARD OF LAND SURVEYORS RULES, PART 5.4 AND 5.5 ADOPTED UNDER 26 VSA SECTION 2544(A).

SIGNED: *Timothy A. Patch*
 TIMOTHY A. PATCH, L.S. 680



STATE OF VERMONT AGENCY OF TRANSPORTATION		SURVEYED: SGC
STATUTORY SURVEY		ENGINEERING
TOWN OF MARSHFIELD		REVIEWED: TAP
VERMONT US ROUTE 2		DATE: 04/01/2015
APPROXIMATELY FROM PLAINFIELD TOWN LINE TO CABOT TOWN LINE		SCALE: 1"=40'
		FILE: 212600ROW.DGN
		SHEET NO. 33 OF 64

ORIGINAL DRAWING - INK ON POLYESTER FILM MEETING THE REQUIREMENTS OF 27 V.S.A. § 1403

PIN ID # 12X600

