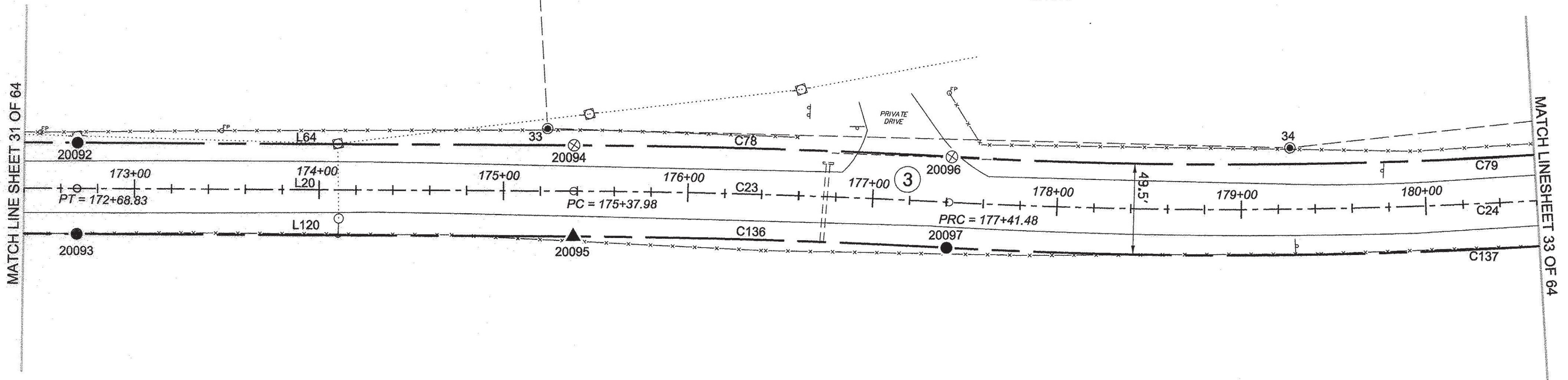
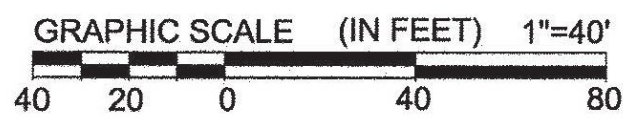


N/F
**CHARLES BICKFORD,
 BARBARA BICKFORD**
 BK. 58, PG. 453
 MAY 14, 1999
 BR #18

N/F
**CHARLES E. BICKFORD,
 BARBARA A. BICKFORD
 & DALE AND JULIE BICKFORD**
 BK. 63, PG. 116
 JAN. 6, 2003
 BR #18



N/F
**CHARLES BICKFORD,
 BARBARA BICKFORD**
 BK. 58, PG. 453
 MAY 14, 1999

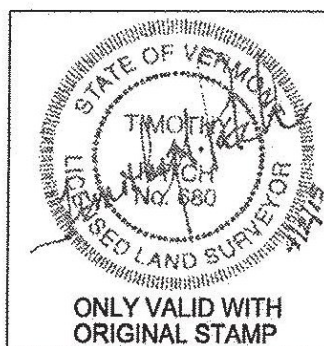


- LEGEND:**
 SEE SHEET 1 OF 64
- NOTES:**
 SEE SHEETS 2 & 3 OF 64
- MONUMENT TABLE:**
 SEE SHEETS 6, 7, 8 OF 64
- ROW CENTER LINE TABLE:**
 SEE SHEET 8 OF 64
- ROW LIMIT LINE & CURVE TABLES:**
 SEE SHEET 9 OF 64

I CERTIFY THAT THIS PLAT IS BASED ON INFORMATION ABSTRACTED FROM DOCUMENTS, PAROL EVIDENCE, AND PHYSICAL EVIDENCE. THE SURVEY WORK IDENTIFIED HEREON IS CONSISTENT WITH THIS INFORMATION.

I CERTIFY THAT THIS PLAT MEETS THE REQUIREMENTS OF 27 VSA SECTION 1403 AND COMPLIES WITH VERMONT BOARD OF LAND SURVEYORS RULES, PART 5.4 AND 5.5 ADOPTED UNDER 26 VSA SECTION 2544(A).

SIGNED: *Timothy A. Patch*
 TIMOTHY A. PATCH, L.S. 680



**STATE OF VERMONT
 AGENCY OF TRANSPORTATION**



STATUTORY SURVEY
 TOWN OF MARSHFIELD
VERMONT US ROUTE 2
 APPROXIMATELY FROM PLAINFIELD
 TOWN LINE TO CABOT TOWN LINE

SURVEYED: SGC ENGINEERING
REVIEWED: TAP
DATE: 04/01/2015
SCALE: 1"=40'
FILE: 212x600ROW.DGN
SHEET NO. 32 OF 64

