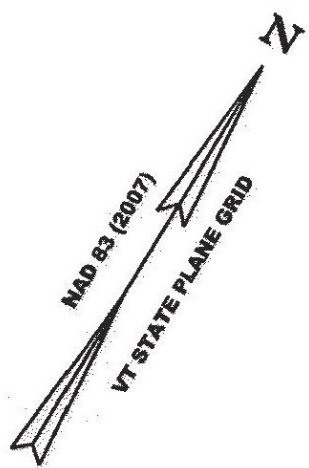


ORIGINAL DRAWING - INK ON POLYESTER FILM MEETING THE REQUIREMENTS OF 27 V.S.A. § 1403

PIN ID # 12X600



N/F
DALE R. WELLS
& JUDITH WELLS
BK. 47, PG. 183
SEPT. 14, 1995
BR #14 & #16 & #17

N/F
H. CHANDLER ROWELL
BK. 33, PG. 72
AUG. 17, 1979

N/F
CHARLES E. BICKFORD,
BARBARA A. BICKFORD
& DALE AND JULIE BICKFORD
BK. 63, PG. 116
JAN. 6, 2003
BR #18

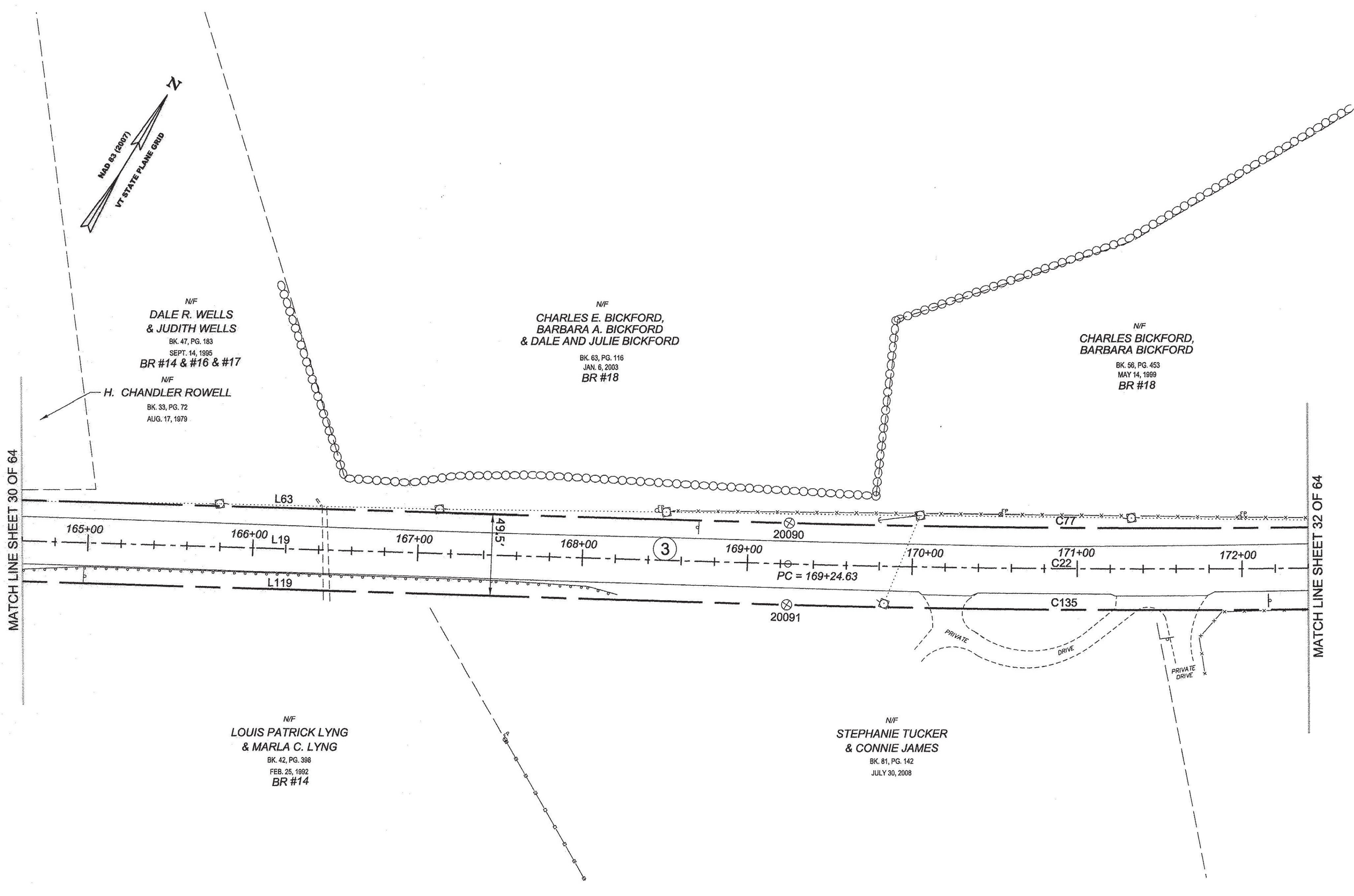
N/F
CHARLES BICKFORD,
BARBARA BICKFORD
BK. 56, PG. 453
MAY 14, 1999
BR #18

N/F
LOUIS PATRICK LYNG
& MARLA C. LYNG
BK. 42, PG. 398
FEB. 25, 1992
BR #14

N/F
STEPHANIE TUCKER
& CONNIE JAMES
BK. 81, PG. 142
JULY 30, 2008

MATCH LINE SHEET 30 OF 64

MATCH LINE SHEET 32 OF 64

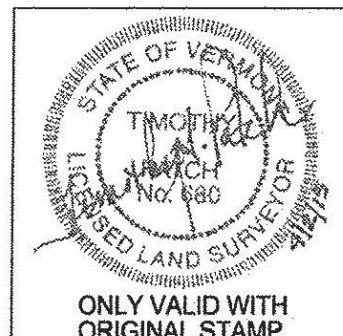


LEGEND:
SEE SHEET 1 OF 64
NOTES:
SEE SHEETS 2 & 3 OF 64
MONUMENT TABLE:
SEE SHEETS 6,7,8 OF 64
ROW CENTER LINE TABLE:
SEE SHEET 8 OF 64
ROW LIMIT LINE & CURVE TABLES:
SEE SHEET 9 OF 64

I CERTIFY THAT THIS PLAT IS BASED ON INFORMATION ABSTRACTED FROM DOCUMENTS, PAROL EVIDENCE, AND PHYSICAL EVIDENCE. THE SURVEY WORK IDENTIFIED HEREON IS CONSISTENT WITH THIS INFORMATION.

I CERTIFY THAT THIS PLAT MEETS THE REQUIREMENTS OF 27 VSA SECTION 1403 AND COMPLIES WITH VERMONT BOARD OF LAND SURVEYORS RULES, PART 5.4 AND 5.5 ADOPTED UNDER 26 VSA SECTION 2544(A).

SIGNED: *Timothy A. Patch*
TIMOTHY A. PATCH, L.S. 680



STATE OF VERMONT AGENCY OF TRANSPORTATION		SURVEYED: SGC
STATUTORY SURVEY		ENGINEERING
TOWN OF MARSHFIELD		REVIEWED: TAP
VERMONT US ROUTE 2		DATE: 04/01/2015
APPROXIMATELY FROM PLAINFIELD		SCALE: 1"=40'
TOWN LINE TO CABOT TOWN LINE		FILE: 212600ROW.DGN
		SHEET NO. 31 OF 64

