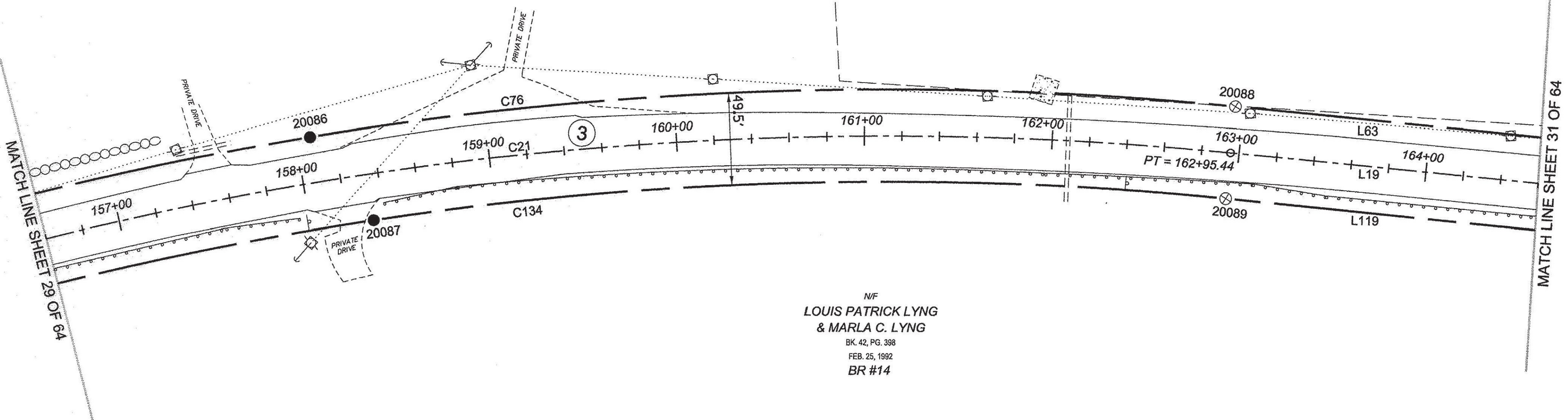


N/F
**DALE R. WELLS
 & JUDITH WELLS**
 BK. 47, PG. 183
 SEPT. 14, 1995
 BR #14 & #16 & #17

N/F
H. CHANDLER ROWELL
 BK. 33, PG. 72
 AUG. 17, 1979

N/F
**LOUIS PATRICK LYNG
 & MARLA C. LYNG**
 BK. 42, PG. 398
 FEB. 25, 1992
 BR #14



ORIGINAL DRAWING - INK ON POLYESTER FILM MEETING THE REQUIREMENTS OF 27 V.S.A. § 1403

PIN ID # 12X600

RECEIVED
 APR 28 2015
 MARSHFIELD, VERMONT
 TOWN CLERK'S OFFICE

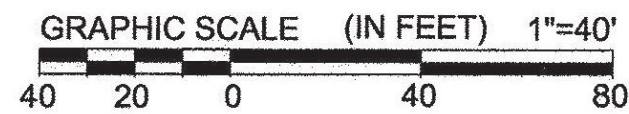
LEGEND:
 SEE SHEET 1 OF 64

NOTES:
 SEE SHEETS 2 & 3 OF 64

MONUMENT TABLE:
 SEE SHEETS 6, 7, 8 OF 64

ROW CENTER LINE TABLE:
 SEE SHEET 8 OF 64

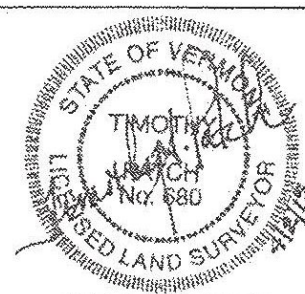
ROW LIMIT LINE & CURVE TABLES:
 SEE SHEET 9 OF 64



I CERTIFY THAT THIS PLAT IS BASED ON INFORMATION ABSTRACTED FROM DOCUMENTS, PAROL EVIDENCE, AND PHYSICAL EVIDENCE. THE SURVEY WORK IDENTIFIED HEREON IS CONSISTENT WITH THIS INFORMATION.

I CERTIFY THAT THIS PLAT MEETS THE REQUIREMENTS OF 27 VSA SECTION 1403 AND COMPLIES WITH VERMONT BOARD OF LAND SURVEYORS RULES, PART 5.4 AND 5.5 ADOPTED UNDER 26 VSA SECTION 2544(A).

SIGNED: *Timothy A. Patch*
 TIMOTHY A. PATCH, L.S. 680



ONLY VALID WITH ORIGINAL STAMP

**STATE OF VERMONT
 AGENCY OF TRANSPORTATION**



STATUTORY SURVEY
 TOWN OF MARSHFIELD
VERMONT US ROUTE 2
 APPROXIMATELY FROM PLAINFIELD
 TOWN LINE TO CABOT TOWN LINE

SURVEYED:
 SSC
 ENGINEERING
 REVIEWED:
 TAP
 DATE:
 04/01/2015
 SCALE:
 1"=40'
 FILE:
 212600ROW.DGN
 SHEET NO.
 30 OF 64