

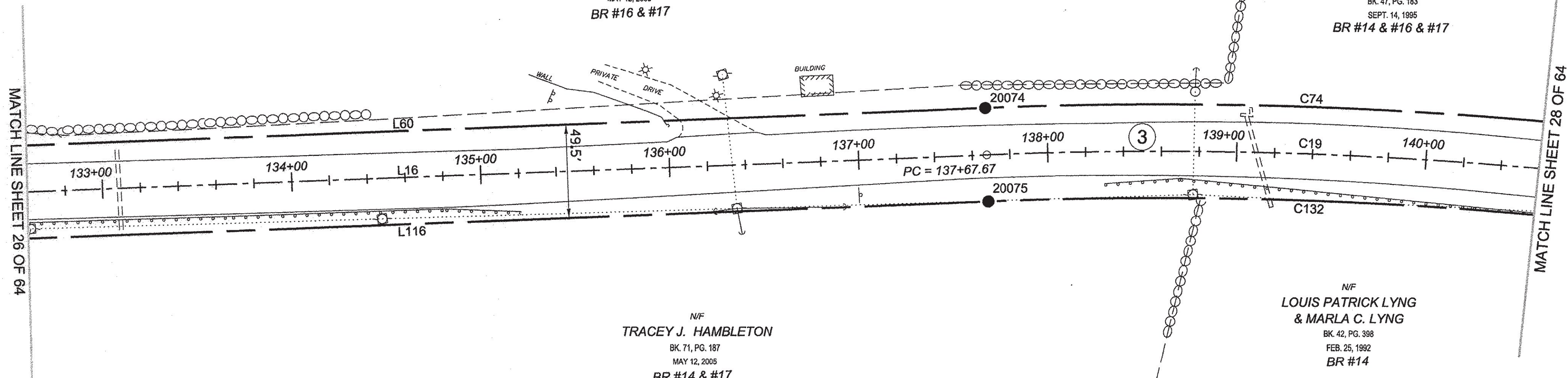


N/F  
**TRACEY J. HAMBLETON**  
 BK. 71, PG. 189  
 MAY 12, 2005  
 BR #16 & #17

N/F  
**DALE R. WELLS  
 & JUDITH WELLS**  
 BK. 47, PG. 183  
 SEPT. 14, 1995  
 BR #14 & #16 & #17

N/F  
**TRACEY J. HAMBLETON**  
 BK. 71, PG. 187  
 MAY 12, 2005  
 BR #14 & #17

N/F  
**LOUIS PATRICK LYNG  
 & MARLA C. LYNG**  
 BK. 42, PG. 398  
 FEB. 25, 1992  
 BR #14



MATCH LINE SHEET 26 OF 64

MATCH LINE SHEET 28 OF 64

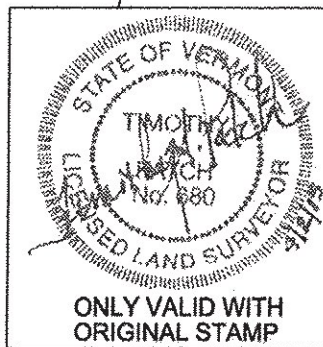


**LEGEND:**  
 SEE SHEET 1 OF 64  
**NOTES:**  
 SEE SHEETS 2 & 3 OF 64  
**MONUMENT TABLE:**  
 SEE SHEETS 6,7,8 OF 64  
**ROW CENTER LINE TABLE:**  
 SEE SHEET 8 OF 64  
**ROW LIMIT LINE & CURVE TABLES:**  
 SEE SHEET 9 OF 64

I CERTIFY THAT THIS PLAT IS BASED ON INFORMATION ABSTRACTED FROM DOCUMENTS, PAROL EVIDENCE, AND PHYSICAL EVIDENCE. THE SURVEY WORK IDENTIFIED HEREON IS CONSISTENT WITH THIS INFORMATION.

I CERTIFY THAT THIS PLAT MEETS THE REQUIREMENTS OF 27 VSA SECTION 1403 AND COMPLIES WITH VERMONT BOARD OF LAND SURVEYORS RULES, PART 5.4 AND 5.5 ADOPTED UNDER 26 VSA SECTION 2544(A).

SIGNED: *Timothy A. Patch*  
 TIMOTHY A. PATCH, L.S. 680



**STATE OF VERMONT  
 AGENCY OF TRANSPORTATION**



**STATUTORY SURVEY**  
 TOWN OF MARSHFIELD  
**VERMONT US ROUTE 2**  
 APPROXIMATELY FROM PLAINFIELD  
 TOWN LINE TO CABOT TOWN LINE

SURVEYED: SGC	DATE: 04/01/2015
ENGINEERING	SCALE: 1"=40'
REVIEWED: TAP	FILE: z12x600ROW.DGN
SHEET NO. 27 OF 64	

ORIGINAL DRAWING - INK ON POLYESTER FILM MEETING THE REQUIREMENTS OF 27 V.S.A. § 1403

PIN ID # 12X600

