

NAD 83 (2007)
VT STATE PLANE GRID

N/F
JACQUELYN C. LIEBOLD
&
JONATHAN A LIEBOLD
BK. 93, PG. 384
JULY 29, 2014
BR #13 & #15

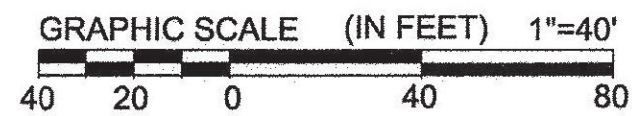
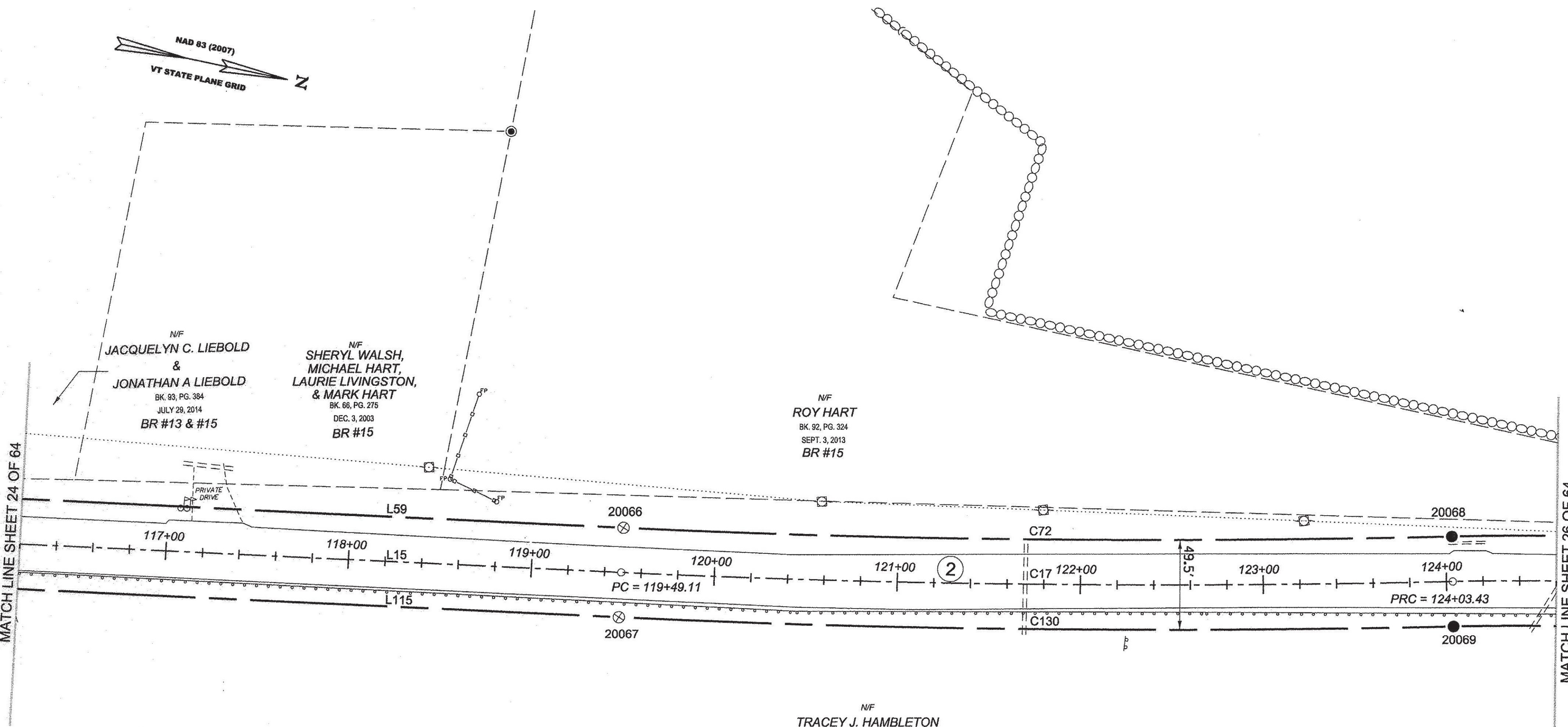
N/F
SHERYL WALSH,
MICHAEL HART,
LAURIE LIVINGSTON,
& MARK HART
BK. 66, PG. 275
DEC. 3, 2003
BR #15

N/F
ROY HART
BK. 92, PG. 324
SEPT. 3, 2013
BR #15

N/F
TRACEY J. HAMBLETON
BK. 71, PG. 187
MAY 12, 2005
BR #14 & #17

MATCH LINE SHEET 24 OF 64

MATCH LINE SHEET 26 OF 64



LEGEND:
SEE SHEET 1 OF 64

NOTES:
SEE SHEETS 2 & 3 OF 64

MONUMENT TABLE:
SEE SHEETS 6, 7, 8 OF 64

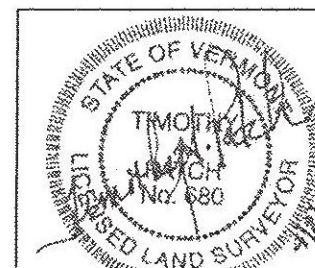
ROW CENTER LINE TABLE:
SEE SHEET 8 OF 64

ROW LIMIT LINE & CURVE TABLES:
SEE SHEET 9 OF 64

I CERTIFY THAT THIS PLAT IS BASED ON INFORMATION ABSTRACTED FROM DOCUMENTS, PAROL EVIDENCE, AND PHYSICAL EVIDENCE. THE SURVEY WORK IDENTIFIED HEREON IS CONSISTENT WITH THIS INFORMATION.

I CERTIFY THAT THIS PLAT MEETS THE REQUIREMENTS OF 27 VSA SECTION 1403 AND COMPLIES WITH VERMONT BOARD OF LAND SURVEYORS RULES, PART 5.4 AND 5.5 ADOPTED UNDER 26 VSA SECTION 2544(A).

SIGNED: *Timothy A. Patch*
TIMOTHY A. PATCH, L.S. 680



ONLY VALID WITH ORIGINAL STAMP

STATE OF VERMONT
AGENCY OF TRANSPORTATION



STATUTORY SURVEY
TOWN OF MARSHFIELD
VERMONT US ROUTE 2
APPROXIMATELY FROM PLAINFIELD
TOWN LINE TO CABOT TOWN LINE

SURVEYED:
SGC
ENGINEERING
REVIEWED:
TAP
DATE:
04/01/2015
SCALE:
1"=40'
FILE:
z12x600ROW.DGN
SHEET NO.
25 OF 64

ORIGINAL DRAWING - INK ON POLYESTER FILM MEETING THE REQUIREMENTS OF 27 V.S.A. § 1403

PIN ID # 12X600

