

N/F
KEVIN G. CLICHE
 BK. 41, PG. 4
 JULY 12, 1990
 BR #15

N/F
JACQUELYN C. LIEBOLD
 &
JONATHAN A LIEBOLD
 BK. 93, PG. 384
 JULY 29, 2014
 BR #13 & #15

N/F
JACQUELYN C. LIEBOLD
 &
JONATHAN A LIEBOLD
 BK. 93, PG. 384
 JULY 29, 2014
 BR #13 & #15

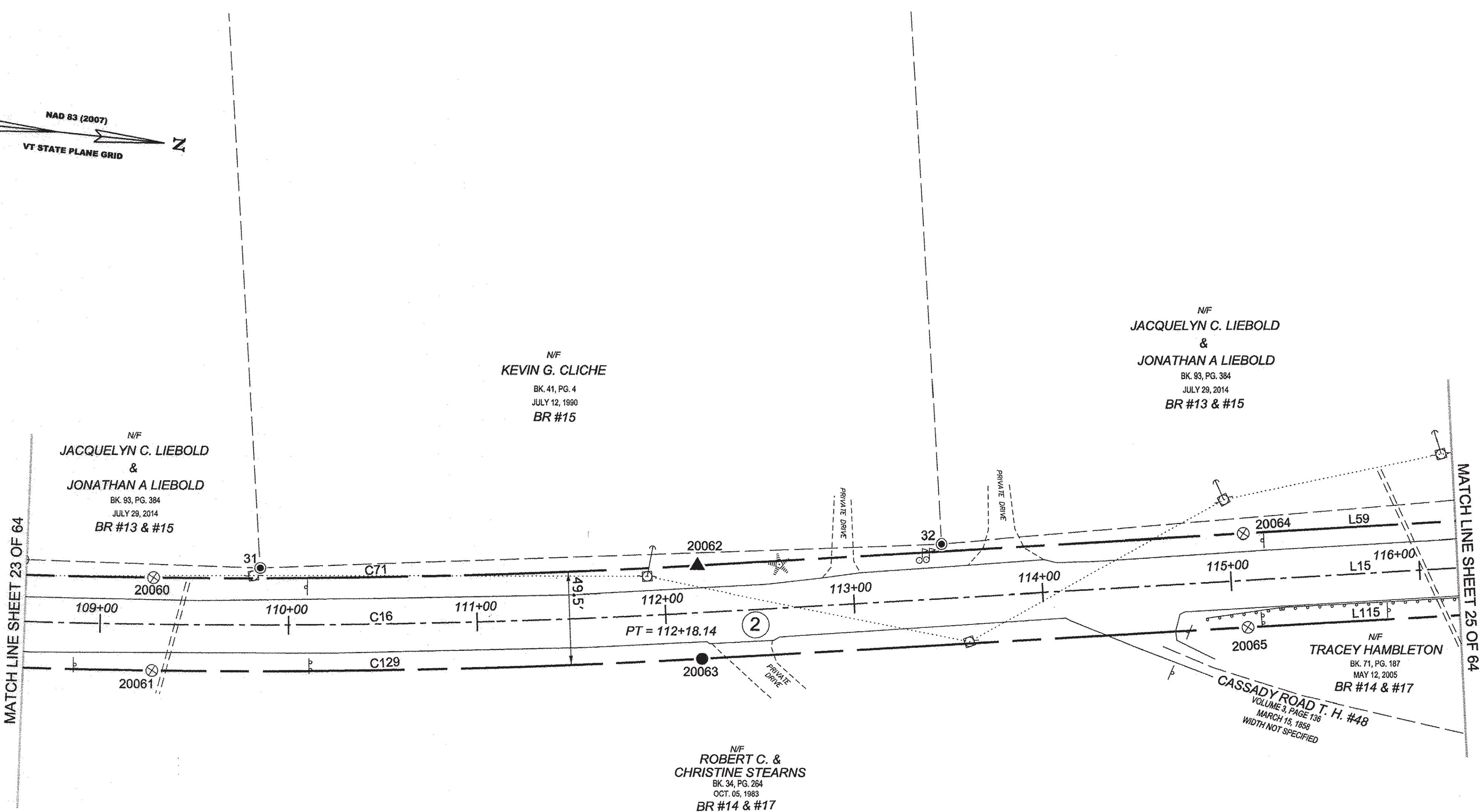
N/F
**ROBERT C. &
 CHRISTINE STEARNS**
 BK. 34, PG. 284
 OCT. 05, 1983
 BR #14 & #17

N/F
TRACEY HAMBLETON
 BK. 71, PG. 187
 MAY 12, 2005
 BR #14 & #17

CASSADY ROAD T. H. #48
 VOLUME 3, PAGE 136
 MARCH 15, 1950
 WIDTH NOT SPECIFIED

MATCH LINE SHEET 23 OF 64

MATCH LINE SHEET 25 OF 64



LEGEND:
 SEE SHEET 1 OF 64

NOTES:
 SEE SHEETS 2 & 3 OF 64

MONUMENT TABLE:
 SEE SHEETS 6,7,8 OF 64

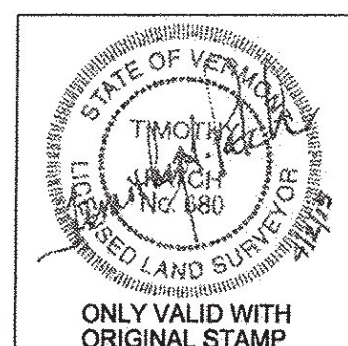
ROW CENTER LINE TABLE:
 SEE SHEET 8 OF 64

ROW LIMIT LINE & CURVE TABLES:
 SEE SHEET 9 OF 64

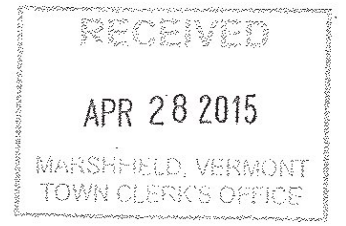
I CERTIFY THAT THIS PLAT IS BASED ON INFORMATION ABSTRACTED FROM DOCUMENTS, PAROL EVIDENCE, AND PHYSICAL EVIDENCE. THE SURVEY WORK IDENTIFIED HEREON IS CONSISTENT WITH THIS INFORMATION.

I CERTIFY THAT THIS PLAT MEETS THE REQUIREMENTS OF 27 VSA SECTION 1403 AND COMPLIES WITH VERMONT BOARD OF LAND SURVEYORS RULES, PART 5.4 AND 5.5 ADOPTED UNDER 26 VSA SECTION 2544(A).

SIGNED: *Timothy A. Patch*
 TIMOTHY A. PATCH, L.S. 680



STATE OF VERMONT AGENCY OF TRANSPORTATION		SURVEYED: SCC ENGINEERING REVIEWED: TAP
STATUTORY SURVEY		DATE: 04/01/2015
VERMONT US ROUTE 2		SCALE: 1"=40'
TOWN OF MARSHFIELD APPROXIMATELY FROM PLAINFIELD TOWN LINE TO CABOT TOWN LINE		FILE: 272600ROW.DGN SHEET NO. 24 OF 64



ORIGINAL DRAWING - INK ON POLYESTER FILM MEETING THE REQUIREMENTS OF 27 V.S.A. § 1403
 PIN ID# 12X600