

N/F
CHRISTOPHER COZADD
 BK. 91, PG. 148
 OCT. 17, 2012
 BR #12 & #13

N/F
**GARY S. WILSON
 JILL M. WILSON**
 BK. 55, PG. 222
 SEPT. 19, 2000
 BR #12 & #13

N/F
**GARY S. WILSON
 JILL M. WILSON**
 BK. 55, PG. 222
 SEPT. 19, 2000
 BR #12 & #13

N/F
**VERMONT FISH
 AND GAME**
 BK. 31, PG. 38
 OCT. 25, 1974
 BR #13B

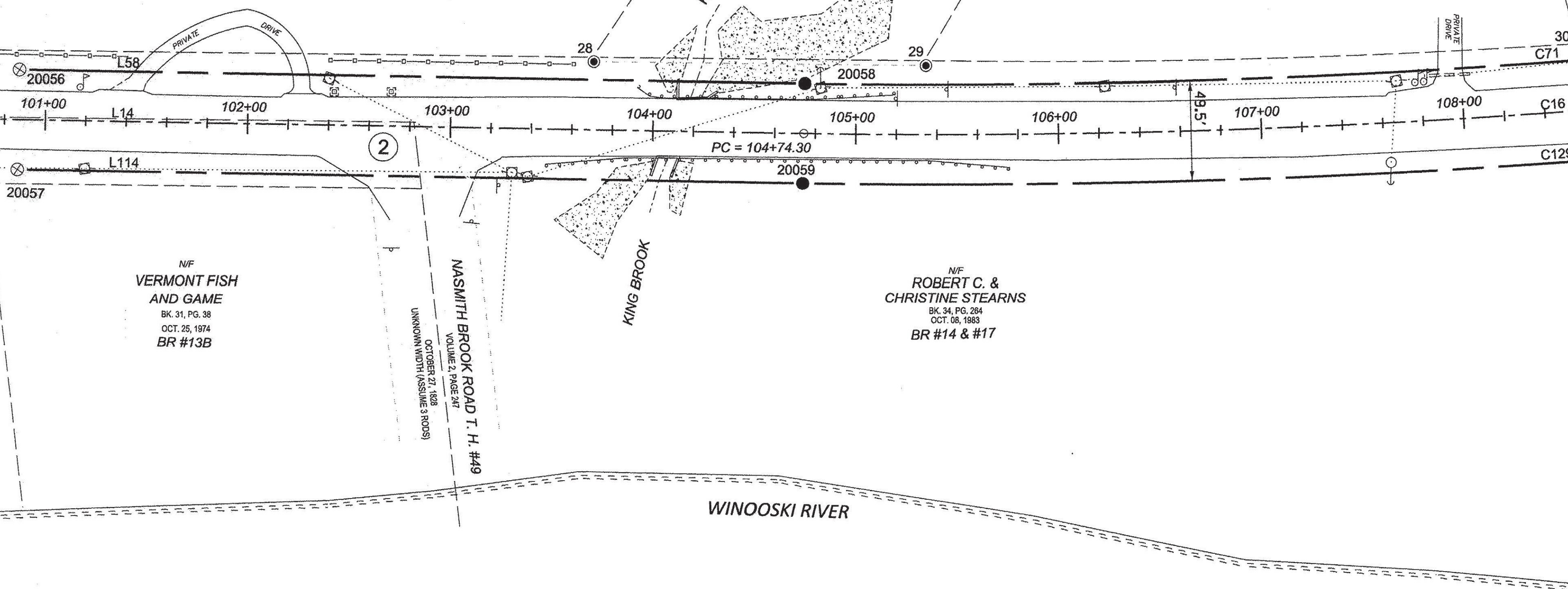
N/F
**ROBERT C. &
 CHRISTINE STEARNS**
 BK. 34, PG. 284
 OCT. 08, 1983
 BR #14 & #17

NASMITH BROOK ROAD T. H. #49
 VOLUME 2, PAGE 247
 OCTOBER 27, 1828
 UNKNOWN WIDTH (ASSUME 3 ROADS)

WINOOSKI RIVER

MATCH LINE SHEET 22 OF 64

MATCH LINE SHEET 24 OF 64

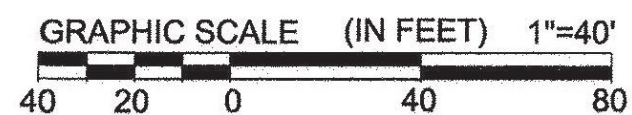


ORIGINAL DRAWING - INK ON POLYESTER FILM MEETING THE REQUIREMENTS OF 27 V.S.A. § 1403

PIN ID # 12X600

RECEIVED
 APR 28 2015
 MARSHFIELD, VERMONT
 TOWN CLERK'S OFFICE

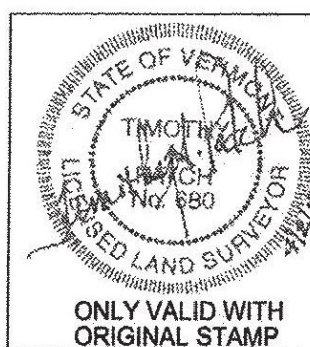
LEGEND:
 SEE SHEET 1 OF 64
 NOTES:
 SEE SHEETS 2 & 3 OF 64
 MONUMENT TABLE:
 SEE SHEETS 6, 7, 8 OF 64
 ROW CENTER LINE TABLE:
 SEE SHEET 8 OF 64
 ROW LIMIT LINE & CURVE TABLES:
 SEE SHEET 9 OF 64



I CERTIFY THAT THIS PLAT IS BASED ON INFORMATION ABSTRACTED FROM DOCUMENTS, PAROL EVIDENCE, AND PHYSICAL EVIDENCE. THE SURVEY WORK IDENTIFIED HEREON IS CONSISTENT WITH THIS INFORMATION.

I CERTIFY THAT THIS PLAT MEETS THE REQUIREMENTS OF 27 V.S.A. SECTION 1403 AND COMPLIES WITH VERMONT BOARD OF LAND SURVEYORS RULES, PART 5.4 AND 5.5 ADOPTED UNDER 26 V.S.A. SECTION 2644(A).

SIGNED: *Timothy A. Patch*
 TIMOTHY A. PATCH, L.S. 680



STATE OF VERMONT AGENCY OF TRANSPORTATION		 VTrans Vermont Agency of Transportation	SURVEYED: SGC ENGINEERING REVIEWED: TAP
STATUTORY SURVEY TOWN OF MARSHFIELD VERMONT US ROUTE 2 APPROXIMATELY FROM PLAINFIELD TOWN LINE TO CABOT TOWN LINE			DATE: 04/01/2015 SCALE: 1"=40' FILE: 2122600ROW.DGN SHEET NO. 23 OF 64