

N/F
LAURA M. JOHNSON
 BK. 90, PG. 529
 JULY 18, 2012
 BR #10

STAR PUDDING FARM ROAD, T.H. #56,
 ASSIGNED ROW 3 FEET WIDE
 NO CREATION DOCUMENT IDENTIFIED
 BR #10

N/F
**JAMES S. &
 DORIS B. CLARK**
 BK. 39, PG. 439
 JUNE 22, 1989
 BR #10

N/F
**GARY S. WILSON
 JILL M. WILSON**
 BK. 55, PG. 222
 SEPT. 19, 2000
 BR #12 & #13

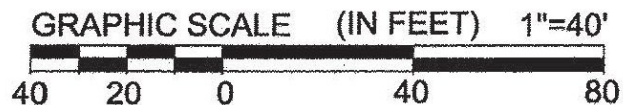
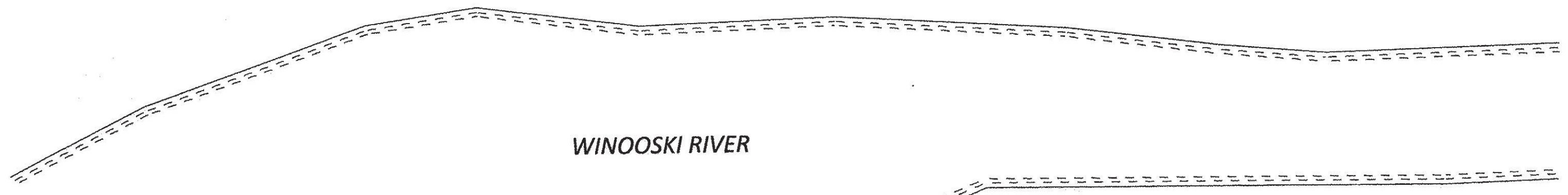
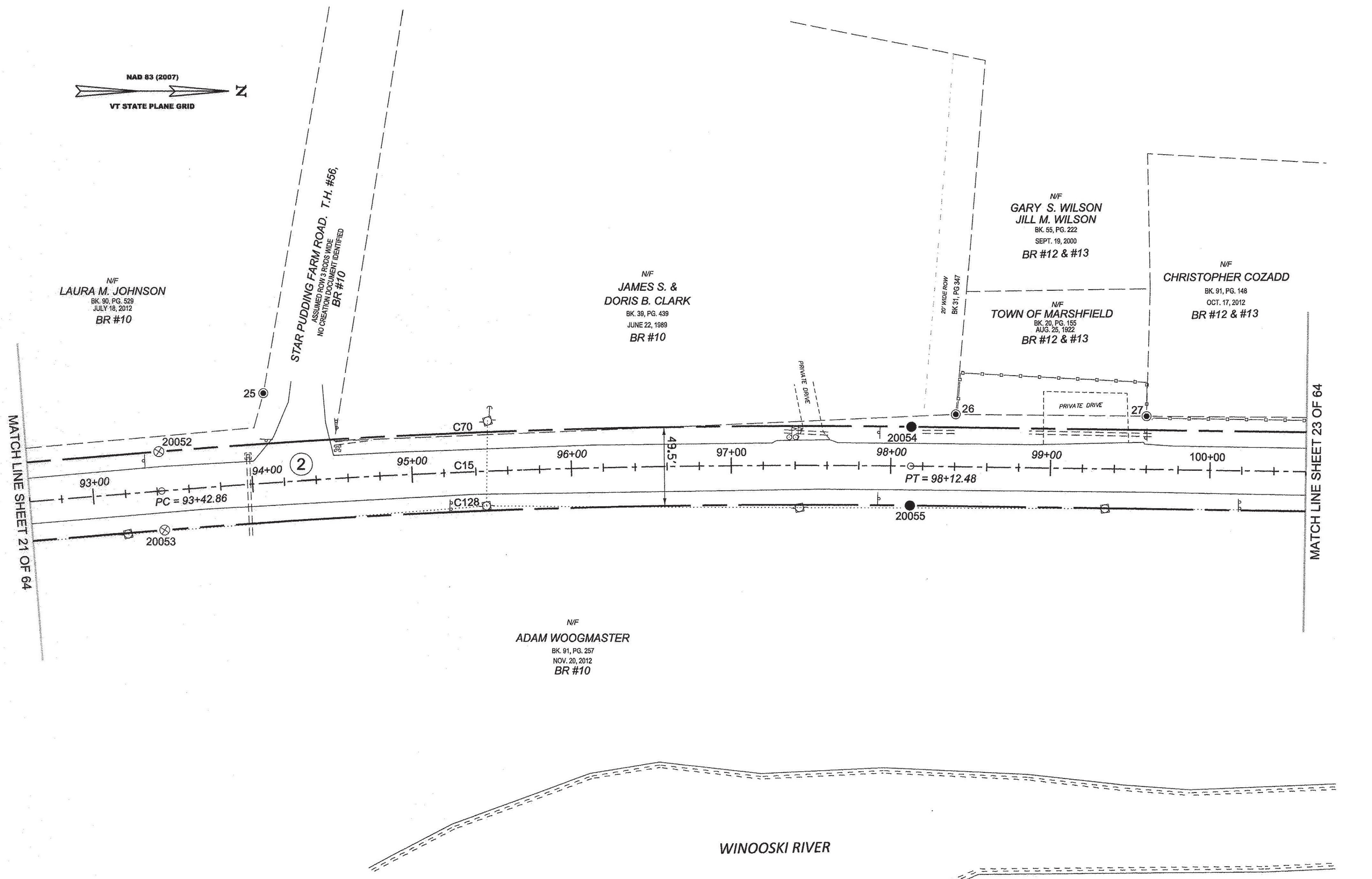
N/F
TOWN OF MARSHFIELD
 BK. 20, PG. 155
 AUG. 25, 1922
 BR #12 & #13

N/F
CHRISTOPHER COZADD
 BK. 91, PG. 148
 OCT. 17, 2012
 BR #12 & #13

N/F
ADAM WOOGMASER
 BK. 91, PG. 257
 NOV. 20, 2012
 BR #10

MATCH LINE SHEET 21 OF 64

MATCH LINE SHEET 23 OF 64



LEGEND:
 SEE SHEET 1 OF 64

NOTES:
 SEE SHEETS 2 & 3 OF 64

MONUMENT TABLE:
 SEE SHEETS 6,7,8 OF 64

ROW CENTER LINE TABLE:
 SEE SHEET 8 OF 64

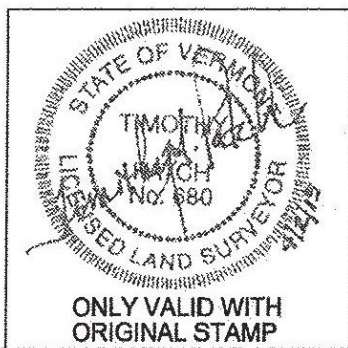
ROW LIMIT LINE & CURVE TABLES:
 SEE SHEET 9 OF 64

I CERTIFY THAT THIS PLAT IS BASED ON INFORMATION ABSTRACTED FROM DOCUMENTS, PAROL EVIDENCE, AND PHYSICAL EVIDENCE. THE SURVEY WORK IDENTIFIED HEREON IS CONSISTENT WITH THIS INFORMATION.

I CERTIFY THAT THIS PLAT MEETS THE REQUIREMENTS OF 27 VSA SECTION 1403 AND COMPLIES WITH VERMONT BOARD OF LAND SURVEYORS RULES, PART 5.4 AND 5.5 ADOPTED UNDER 26 VSA SECTION 2544(A).

SIGNED: *Timothy A. Patch*
 TIMOTHY A. PATCH, L.S. 680

RECEIVED
 APR 28 2015
 MARSHFIELD, VERMONT
 TOWN CLERK'S OFFICE



STATE OF VERMONT AGENCY OF TRANSPORTATION		SURVEYED: SGC
STATUTORY SURVEY		ENGINEERING
TOWN OF MARSHFIELD		REVIEWED: TAP
VERMONT US ROUTE 2		DATE: 04/01/2015
APPROXIMATELY FROM PLAINFIELD TOWN LINE TO CABOT TOWN LINE		SCALE: 1"=40'
		FILE: 212600ROW.DGN
		SHEET NO. 22 OF 64

ORIGINAL DRAWING - INK ON POLYESTER FILM MEETING THE REQUIREMENTS OF 27 V.S.A. § 1403

PIN ID # 12X600