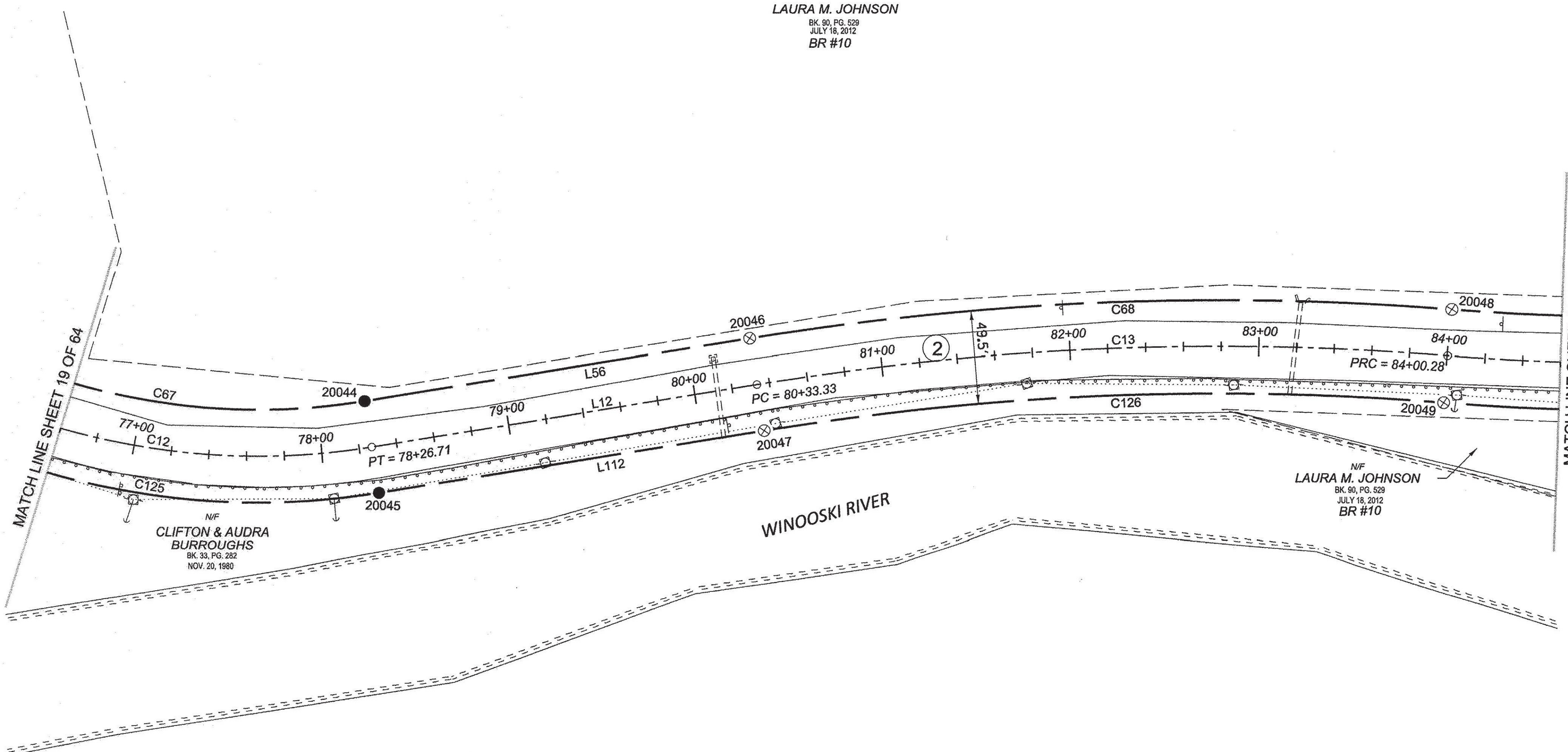


N/F
LAURA M. JOHNSON
 BK. 90, PG. 529
 JULY 18, 2012
 BR #10



N/F
**CLIFTON & AUDRA
 BURROUGHS**
 BK. 33, PG. 282
 NOV. 20, 1980

N/F
LAURA M. JOHNSON
 BK. 90, PG. 529
 JULY 18, 2012
 BR #10

WINOOSKI RIVER

MATCH LINE SHEET 19 OF 64

MATCH LINE SHEET 21 OF 64

ORIGINAL DRAWING - INK ON POLYESTER FILM MEETING THE REQUIREMENTS OF 27 V.S.A. § 1403

PIN ID # 12X600

RECEIVED
 APR 28 2015
 MARSHFIELD, VERMONT
 TOWN CLERK'S OFFICE

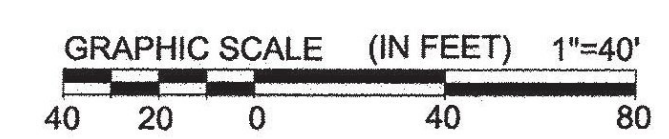
LEGEND:
 SEE SHEET 1 OF 64

NOTES:
 SEE SHEETS 2 & 3 OF 64

MONUMENT TABLE:
 SEE SHEETS 6,7,8 OF 64

ROW CENTER LINE TABLE:
 SEE SHEET 8 OF 64

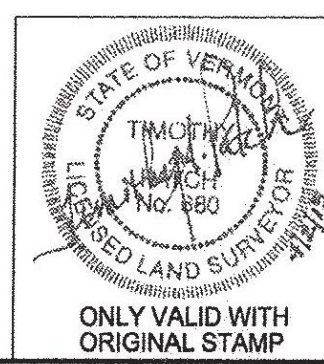
ROW LIMIT LINE & CURVE TABLES:
 SEE SHEET 9 OF 64



I CERTIFY THAT THIS PLAT IS BASED ON INFORMATION ABSTRACTED FROM DOCUMENTS, PAROL EVIDENCE, AND PHYSICAL EVIDENCE. THE SURVEY WORK IDENTIFIED HEREON IS CONSISTENT WITH THIS INFORMATION.

I CERTIFY THAT THIS PLAT MEETS THE REQUIREMENTS OF 27 VSA SECTION 1403 AND COMPLIES WITH VERMONT BOARD OF LAND SURVEYORS RULES, PART 5.4 AND 5.5 ADOPTED UNDER 26 VSA SECTION 2544(A).

SIGNED: *Timothy A. Patch*
 TIMOTHY A. PATCH, L.S. 680



STATE OF VERMONT AGENCY OF TRANSPORTATION		SURVEYED: SSC ENGINEERING REVIEWED: TAP
		DATE: 04/01/2015 SCALE: 1"=40' FILE: 2126500ROW.DGN SHEET NO. 20 OF 64
STATUTORY SURVEY TOWN OF MARSHFIELD VERMONT US ROUTE 2 APPROXIMATELY FROM PLAINFIELD TOWN LINE TO CABOT TOWN LINE		