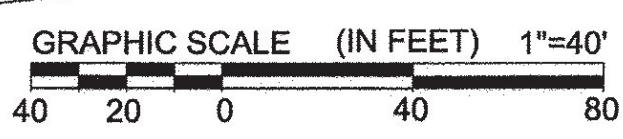
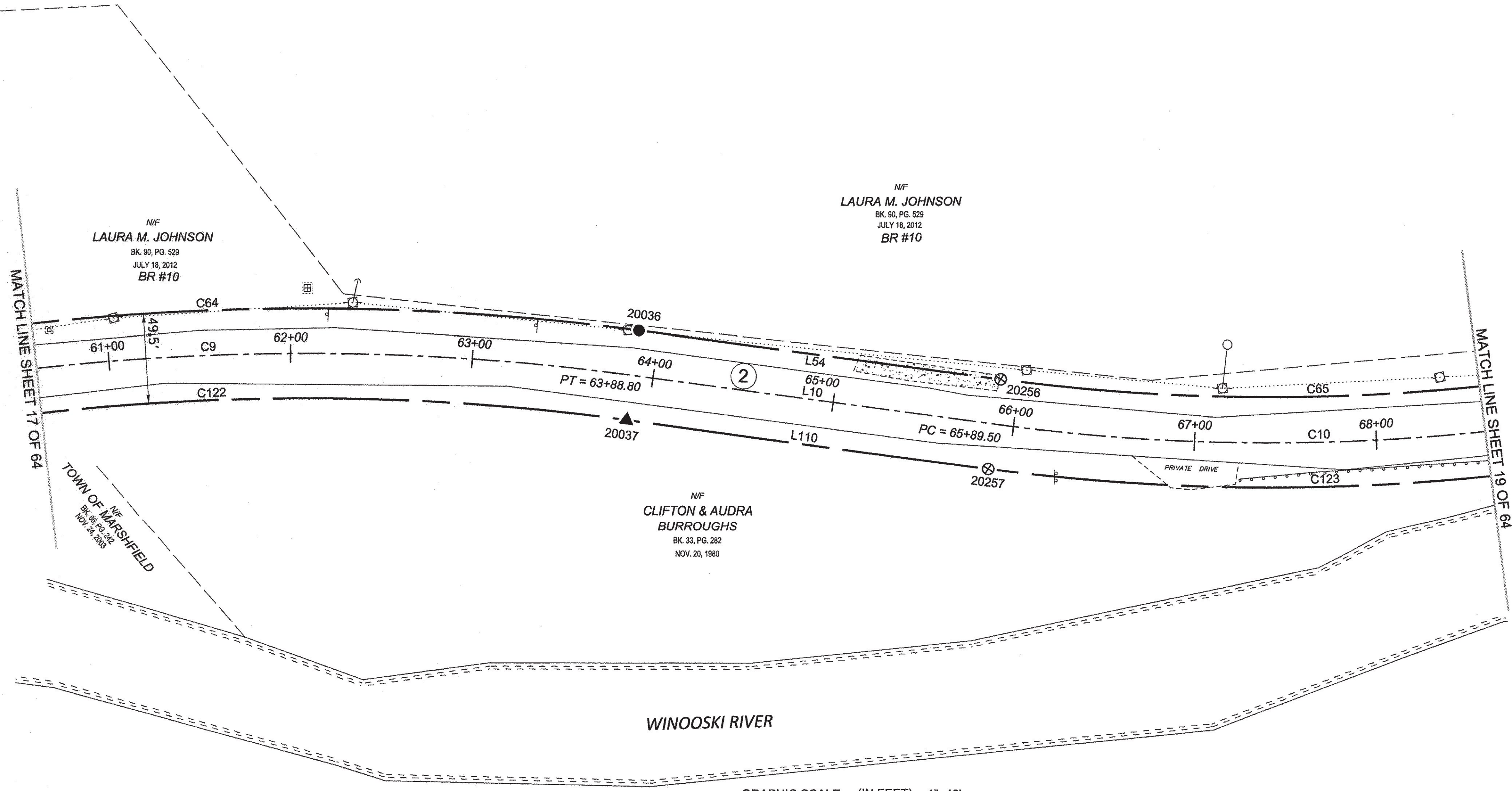


N/F
LAURA M. JOHNSON
 BK. 90, PG. 529
 JULY 18, 2012
 BR #10

N/F
LAURA M. JOHNSON
 BK. 90, PG. 529
 JULY 18, 2012
 BR #10

N/F
TOWN OF MARSHFIELD
 BK. 98, PG. 242
 NOV. 24, 2006

N/F
**CLIFTON & AUDRA
 BURROUGHS**
 BK. 33, PG. 282
 NOV. 20, 1980



LEGEND:
 SEE SHEET 1 OF 64

NOTES:
 SEE SHEETS 2 & 3 OF 64

MONUMENT TABLE:
 SEE SHEETS 6, 7, 8 OF 64

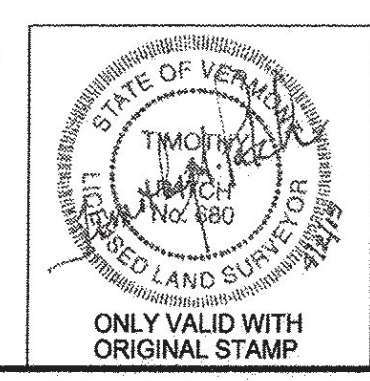
ROW, CENTER LINE TABLE:
 SEE SHEET 8 OF 64

ROW, LIMIT LINE & CURVE TABLES:
 SEE SHEET 9 OF 64

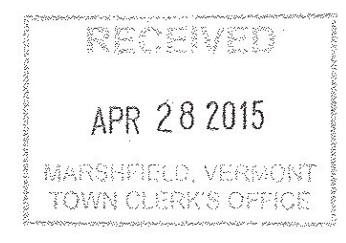
I CERTIFY THAT THIS PLAT IS BASED ON INFORMATION ABSTRACTED FROM DOCUMENTS, PAROL EVIDENCE, AND PHYSICAL EVIDENCE. THE SURVEY WORK IDENTIFIED HEREON IS CONSISTENT WITH THIS INFORMATION.

I CERTIFY THAT THIS PLAT MEETS THE REQUIREMENTS OF 27 VSA SECTION 1403 AND COMPLIES WITH VERMONT BOARD OF LAND SURVEYORS RULES, PART 5.4 AND 5.5 ADOPTED UNDER 26 VSA SECTION 2544(A).

SIGNED: *Timothy A. Patch*
 TIMOTHY A. PATCH, L.S. 680



STATE OF VERMONT AGENCY OF TRANSPORTATION		SURVEYED: SGC ENGINEERING
STATUTORY SURVEY		REVIEWED: TAP
TOWN OF MARSHFIELD		DATE: 04/01/2015
VERMONT US ROUTE 2		SCALE: 1"=40'
APPROXIMATELY FROM PLAINFIELD TOWN LINE TO CABOT TOWN LINE		FILE: z12600ROW.DGN
		SHEET NO. 18 OF 64



ORIGINAL DRAWING - INK ON POLYESTER FILM MEETING THE REQUIREMENTS OF 27 V.S.A. § 1403

PIN ID # 12X600