

N/F  
**PHILIP C. LEIBOLD**  
 BK. 34, PG. 498  
 JUNE 18, 1982  
 BR #6 & #8

N/F  
**MICHAEL P. BARIL**  
 BK. 87, PG. 287  
 NOV. 16, 2010  
 BR #9

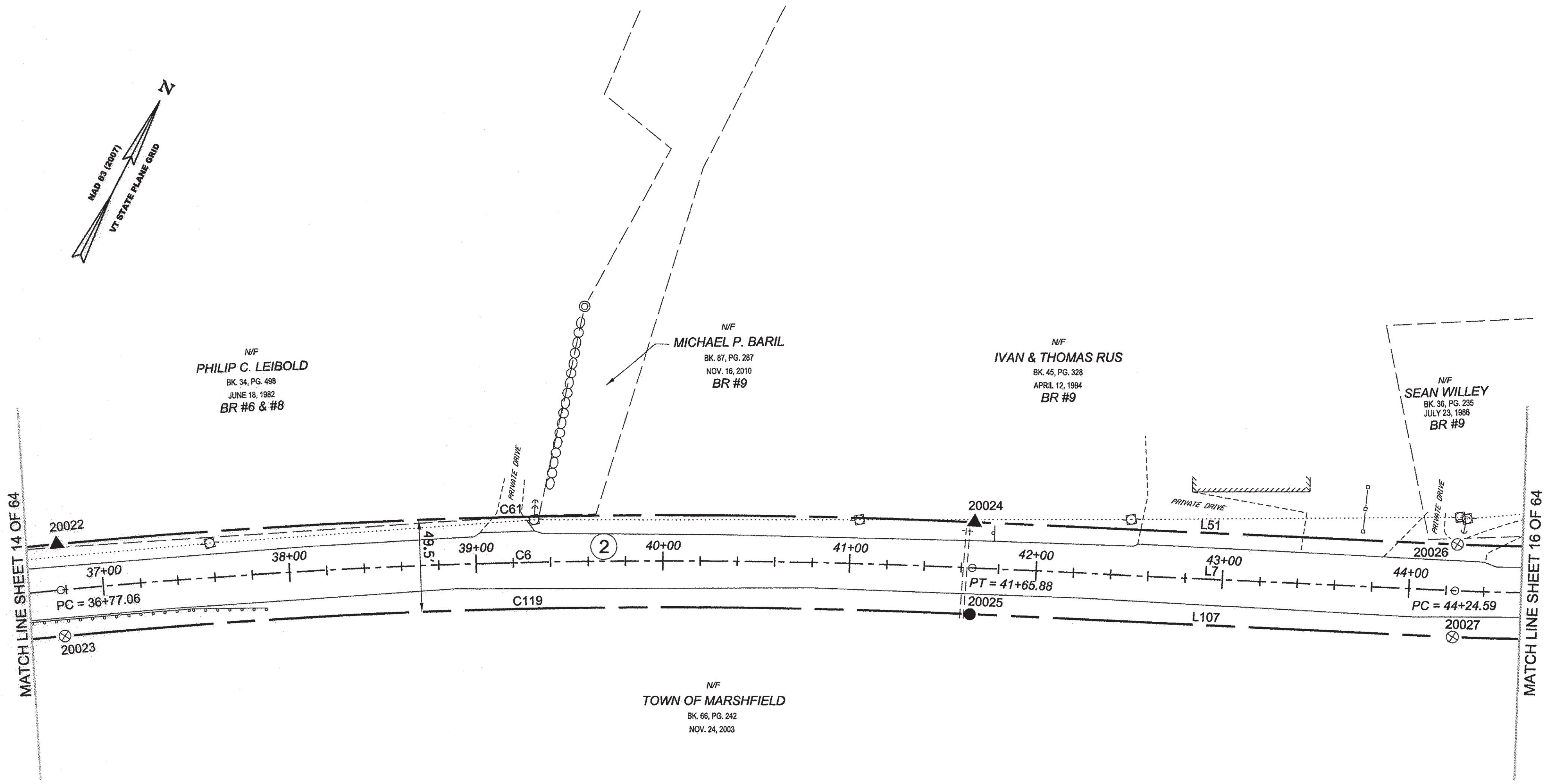
N/F  
**IVAN & THOMAS RUS**  
 BK. 45, PG. 328  
 APRIL 12, 1994  
 BR #9

N/F  
**SEAN WILLEY**  
 BK. 36, PG. 235  
 JULY 23, 1986  
 BR #9

N/F  
**TOWN OF MARSHFIELD**  
 BK. 66, PG. 242  
 NOV. 24, 2003

MATCH LINE SHEET 14 OF 64

MATCH LINE SHEET 16 OF 64



ORIGINAL DRAWING - INK ON POLYESTER FILM MEETING THE REQUIREMENTS OF 27 V.S.A. § 1403

PIN ID # 12X600

RECEIVED  
 APR 28 2015  
 MARSHFIELD, VERMONT  
 TOWN CLERK'S OFFICE

**LEGEND:**  
 SEE SHEET 1 OF 64

**NOTES:**  
 SEE SHEETS 2 & 3 OF 64

**MONUMENT TABLE:**  
 SEE SHEETS 6, 7, 8 OF 64

**ROW CENTER LINE TABLE:**  
 SEE SHEET 8 OF 64

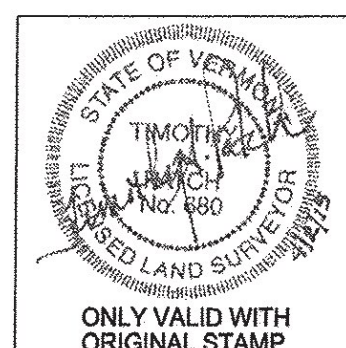
**ROW LIMIT LINE & CURVE TABLES:**  
 SEE SHEET 9 OF 64



I CERTIFY THAT THIS PLAT IS BASED ON INFORMATION ABSTRACTED FROM DOCUMENTS, PAROL EVIDENCE, AND PHYSICAL EVIDENCE. THE SURVEY WORK IDENTIFIED HEREON IS CONSISTENT WITH THIS INFORMATION.

I CERTIFY THAT THIS PLAT MEETS THE REQUIREMENTS OF 27 V.S.A. SECTION 1403 AND COMPLIES WITH VERMONT BOARD OF LAND SURVEYORS RULES, PART 5.4 AND 5.5 ADOPTED UNDER 26 V.S.A. SECTION 2544(A).

SIGNED: *Timothy A. Patch*  
 TIMOTHY A. PATCH, L.S. 680



<b>STATE OF VERMONT AGENCY OF TRANSPORTATION</b>		SURVEYED: SOC ENGINEERING
<b>STATUTORY SURVEY</b>		REVIEWED: TAP
TOWN OF MARSHFIELD		DATE: 04/01/2015
<b>VERMONT US ROUTE 2</b>		SCALE: 1"=40'
APPROXIMATELY FROM PLAINFIELD TOWN LINE TO CABOT TOWN LINE		FILE: 212660ROW.DGN
		SHEET NO. 15 OF 64



ONLY VALID WITH ORIGINAL STAMP