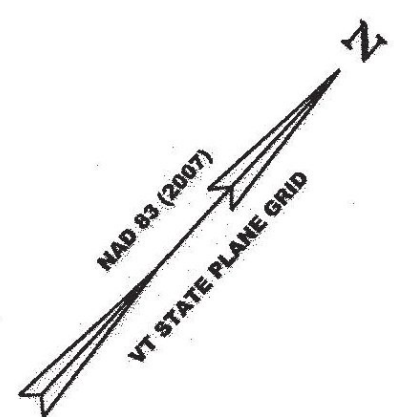


ORIGINAL DRAWING - INK ON POLYESTER FILM MEETING THE REQUIREMENTS OF 27 V.S.A. § 1403

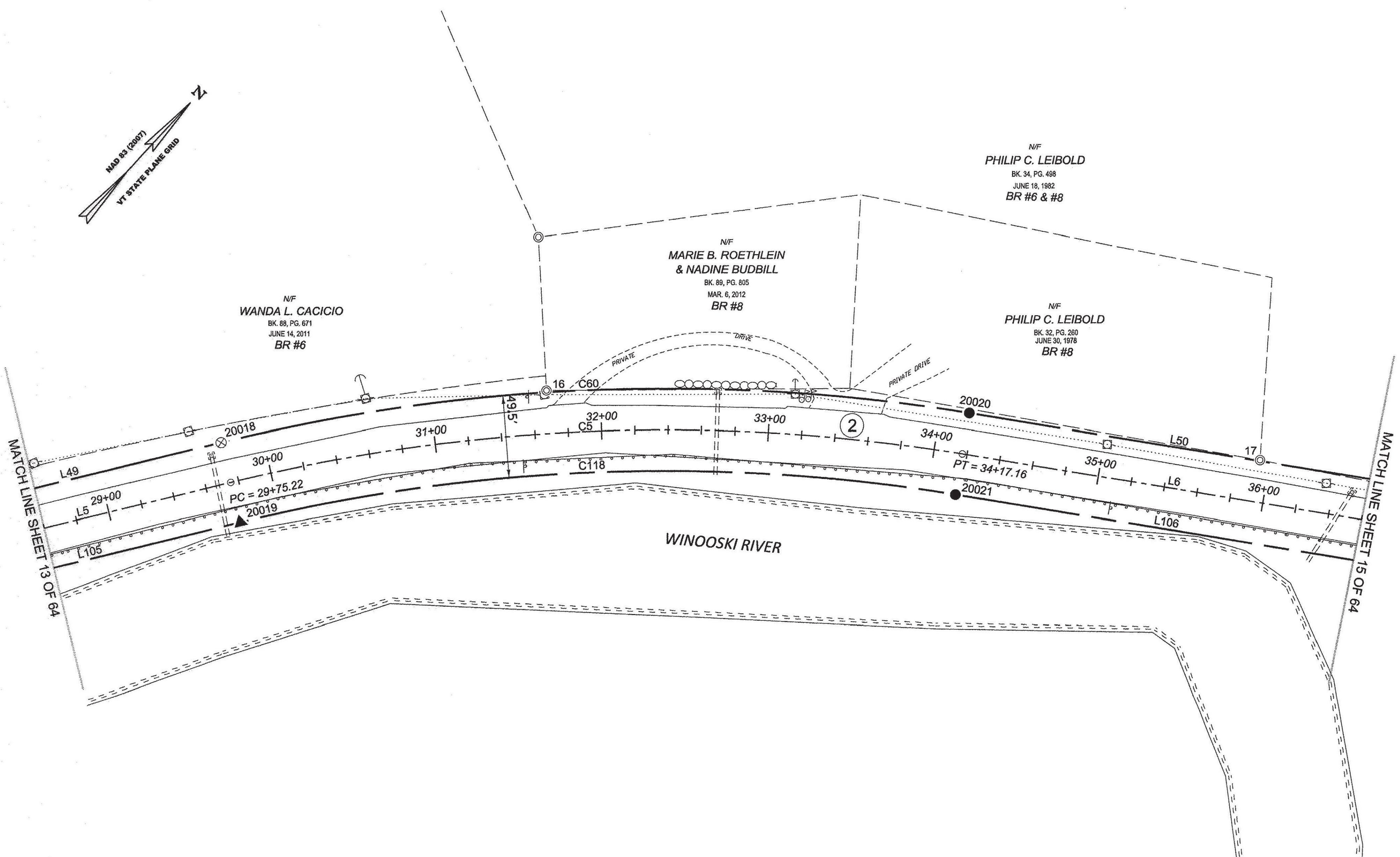


N/F  
WANDA L. CACICIO  
BK. 88, PG. 671  
JUNE 14, 2011  
BR #6

N/F  
MARIE B. ROETHLEIN  
& NADINE BUDBILL  
BK. 89, PG. 805  
MAR. 6, 2012  
BR #8

N/F  
PHILIP C. LEIBOLD  
BK. 34, PG. 498  
JUNE 18, 1982  
BR #6 & #8

N/F  
PHILIP C. LEIBOLD  
BK. 32, PG. 260  
JUNE 30, 1978  
BR #8



MATCH LINE SHEET 13 OF 64

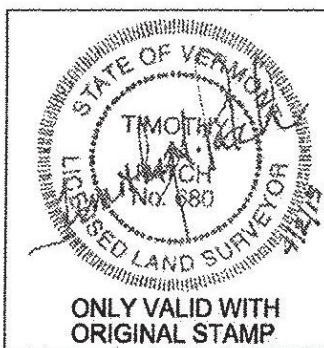
MATCH LINE SHEET 15 OF 64



RECEIVED  
APR 28 2015  
MARSHFIELD, VERMONT  
TOWN CLERK'S OFFICE

LEGEND:  
SEE SHEET 1 OF 64  
NOTES:  
SEE SHEETS 2 & 3 OF 64  
MONUMENT TABLE:  
SEE SHEETS 6, 7, 8 OF 64  
ROW CENTER LINE TABLE:  
SEE SHEET 8 OF 64  
ROW LIMIT LINE & CURVE TABLES:  
SEE SHEET 9 OF 64

I CERTIFY THAT THIS PLAT IS BASED ON INFORMATION ABSTRACTED FROM DOCUMENTS, PAROL EVIDENCE, AND PHYSICAL EVIDENCE. THE SURVEY WORK IDENTIFIED HEREON IS CONSISTENT WITH THIS INFORMATION.  
I CERTIFY THAT THIS PLAT MEETS THE REQUIREMENTS OF 27 VSA SECTION 1403 AND COMPLIES WITH VERMONT BOARD OF LAND SURVEYORS RULES, PART 5.4 AND 5.5 ADOPTED UNDER 26 VSA SECTION 2544(A).  
SIGNED: *Timothy A. Patch*  
TIMOTHY A. PATCH, L.S. 680



<b>STATE OF VERMONT AGENCY OF TRANSPORTATION</b>		SURVEYED: SGC
<b>STATUTORY SURVEY</b>		ENGINEERING:
TOWN OF MARSHFIELD		REVIEWED: TAP
<b>VERMONT US ROUTE 2</b>		DATE: 04/01/2015
APPROXIMATELY FROM PLAINFIELD		SCALE: 1"=40'
TOWN LINE TO CABOT TOWN LINE		FILE: 212600ROW.DGN
		SHEET NO. 14 OF 64

PIN ID # 12X600