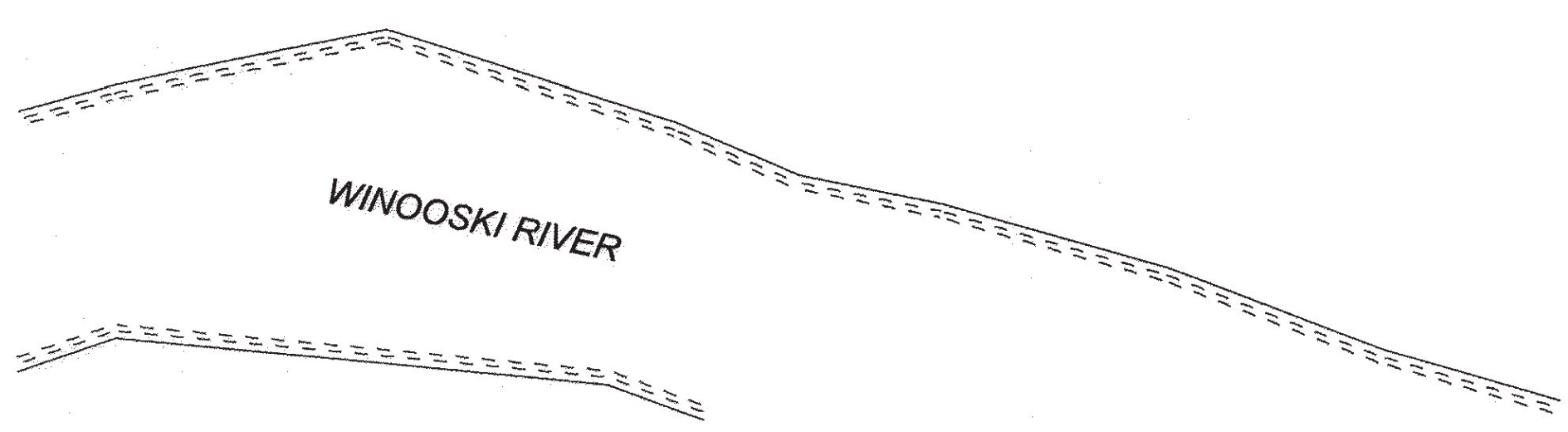
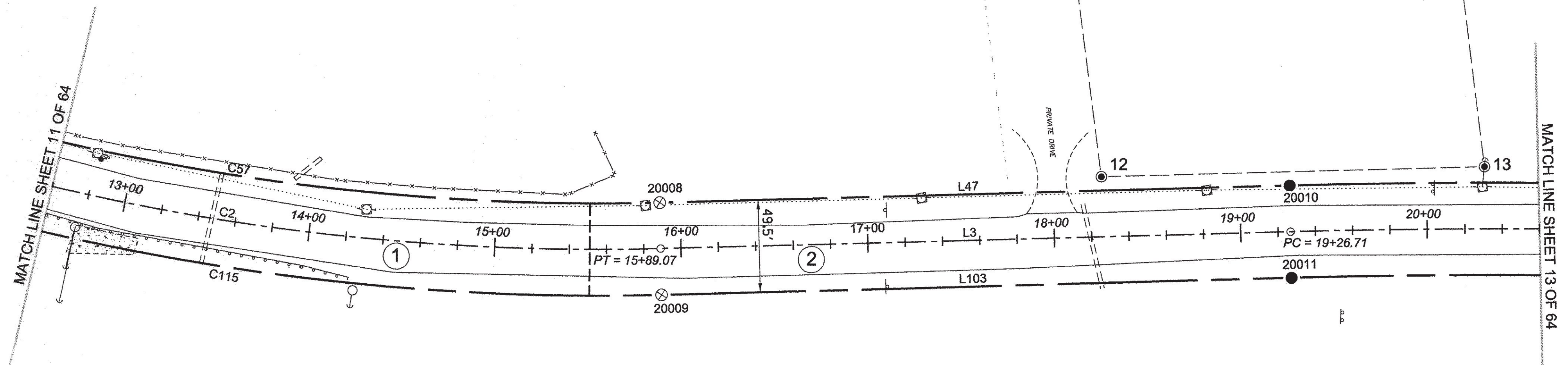


N/F  
**NORMAN DIX REVOCABLE TRUST**  
 BK. 89, PG. 875  
 MAR. 3, 2012  
 BR #6

50' ROW  
 DIX TO BAPTIST CHURCH  
 BK. 34, PG. 140  
 BR #6 & #6B

N/F  
**MACEDONIA BAPTIST CHURCH**  
 BK. 33, PG. 316  
 DEC. 18, 1980  
 BR #6 & #6B



N/F  
**TODD D. BERTE**  
 BK. 80, PG. 277  
 MAY 1, 2008  
 BR #3



**LEGEND:**  
 SEE SHEET 1 OF 64

**NOTES:**  
 SEE SHEETS 2 & 3 OF 64

**MONUMENT TABLE:**  
 SEE SHEETS 6, 7, & 8 OF 64

**ROW CENTER LINE TABLE:**  
 SEE SHEET 8 OF 64

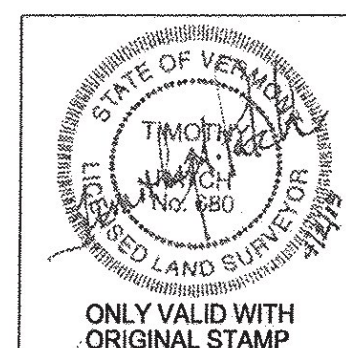
**ROW LIMIT LINE & CURVE TABLES:**  
 SEE SHEET 9 OF 64

I CERTIFY THAT THIS PLAT IS BASED ON INFORMATION ABSTRACTED FROM DOCUMENTS, PAROL EVIDENCE, AND PHYSICAL EVIDENCE. THE SURVEY WORK IDENTIFIED HEREON IS CONSISTENT WITH THIS INFORMATION.

I CERTIFY THAT THIS PLAT MEETS THE REQUIREMENTS OF 27 VSA SECTION 1403 AND COMPLIES WITH VERMONT BOARD OF LAND SURVEYORS RULES, PART 5.4 AND 5.5 ADOPTED UNDER 26 VSA SECTION 2544(A).

SIGNED: *Timothy A. Patch*  
 TIMOTHY A. PATCH, L.S. 680

RECEIVED  
 APR 28 2015  
 MARSHFIELD, VERMONT  
 TOWN CLERK'S OFFICE



<b>STATE OF VERMONT AGENCY OF TRANSPORTATION</b>		SURVEYED: SGC ENGINEERING REVIEWED: TAP
<b>STATUTORY SURVEY</b>		DATE: 04/07/2015
TOWN OF MARSHFIELD		SCALE: 1"=40'
<b>VERMONT US ROUTE 2</b>		FILE: z12x600ROW.DGN
APPROXIMATELY FROM PLAINFIELD TOWN LINE TO CABOT TOWN LINE		SHEET NO. 12 OF 64

ORIGINAL DRAWING - INK ON POLYESTER FILM MEETING THE REQUIREMENTS OF 27 V.S.A. § 1403  
 PIN ID # 12x600