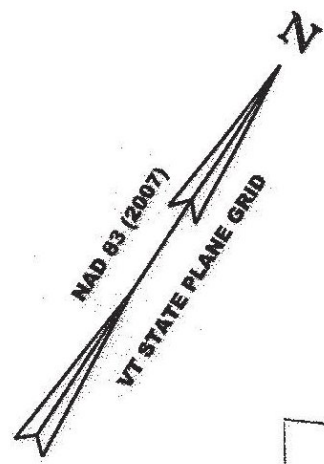


ORIGINAL DRAWING - INK ON POLYESTER FILM MEETING THE REQUIREMENTS OF 27 V.S.A. § 1403

PIN ID # 12X600



N/F
THE HOUSING FOUNDATION, INC.
BK. 36, PG. 309
AUG. 28, 1986
BR #2 & #4

N/F
MARILYN J. PREMONT (DAVIS)
BK. 36, PG. 76
FEB. 4, 1977
BR #4

N/F
NORMAN DIX REVOCABLE TRUST
BK. 89, PG. 875
MAR. 3, 2012
BR #6

N/F
WYOMING LODGE
#80 F & AM
BK. 37, PG. 269
JUNE 30, 1987
BR #5 & BR #6

N/F
VICKIE L. TORRES
BK. 90, PG. 423
JUNE 27, 2012
BR #3

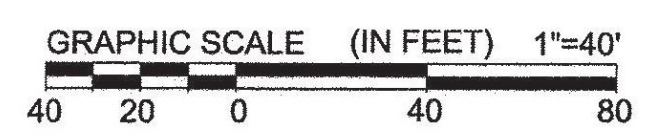
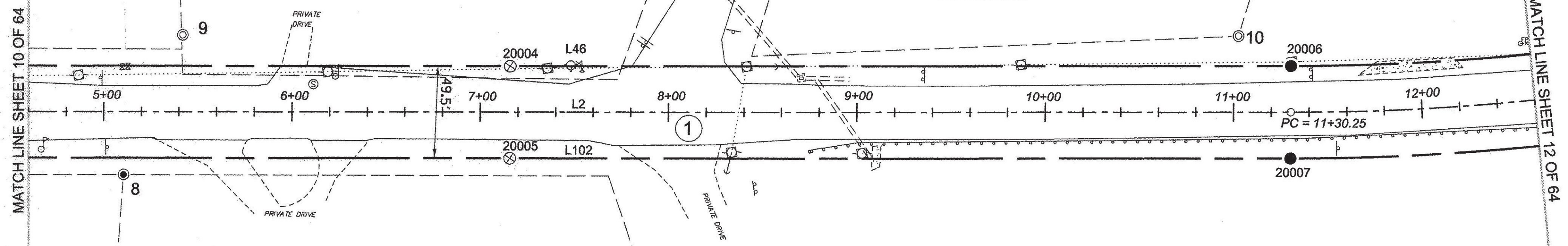
N/F
WANDA L. BERTE
BK. 87, PG. 229
OCT. 29, 2010
BR #3

N/F
TODD D. BERTE
BK. 80, PG. 277
MAY 1, 2008
BR #3

HOLLISTER HILL T.H. #42
VOLUME 1, PAGE 87
SEPTEMBER 15, 1808
3' FODS WIDE ROW

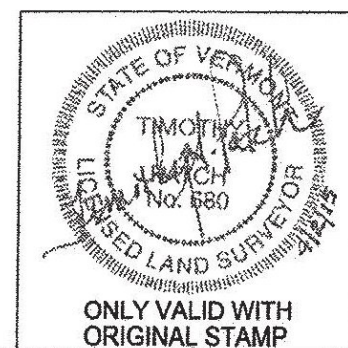
MATCH LINE SHEET 10 OF 64

MATCH LINE SHEET 12 OF 64



LEGEND:
SEE SHEET 1 OF 64
NOTES:
SEE SHEETS 2 & 3 OF 64
MONUMENT TABLE:
SEE SHEETS 6,7,8 OF 64
ROW CENTER LINE TABLE:
SEE SHEET 8 OF 64
ROW LIMIT LINE & CURVE TABLES:
SEE SHEET 9 OF 64

I CERTIFY THAT THIS PLAT IS BASED ON INFORMATION ABSTRACTED FROM DOCUMENTS, PAROL EVIDENCE, AND PHYSICAL EVIDENCE. THE SURVEY WORK IDENTIFIED HEREON IS CONSISTENT WITH THIS INFORMATION.
I CERTIFY THAT THIS PLAT MEETS THE REQUIREMENTS OF 27 VSA SECTION 1403 AND COMPLIES WITH VERMONT BOARD OF LAND SURVEYORS RULES, PART 5.4 AND 5.5 ADOPTED UNDER 26 VSA SECTION 2544(A).
SIGNED: *Timothy A. Patch*
TIMOTHY A. PATCH, L.S. 680



STATE OF VERMONT AGENCY OF TRANSPORTATION		STATUTORY SURVEY TOWN OF MARSHFIELD VERMONT US ROUTE 2 APPROXIMATELY FROM PLAINFIELD TOWN LINE TO CABOT TOWN LINE	SURVEYED: SGC ENGINEERING REVIEWED: TAP
			DATE: 04/01/2015 SCALE: 1"=40' FILE: z12x600ROW.DGN SHEET NO. 11 OF 64