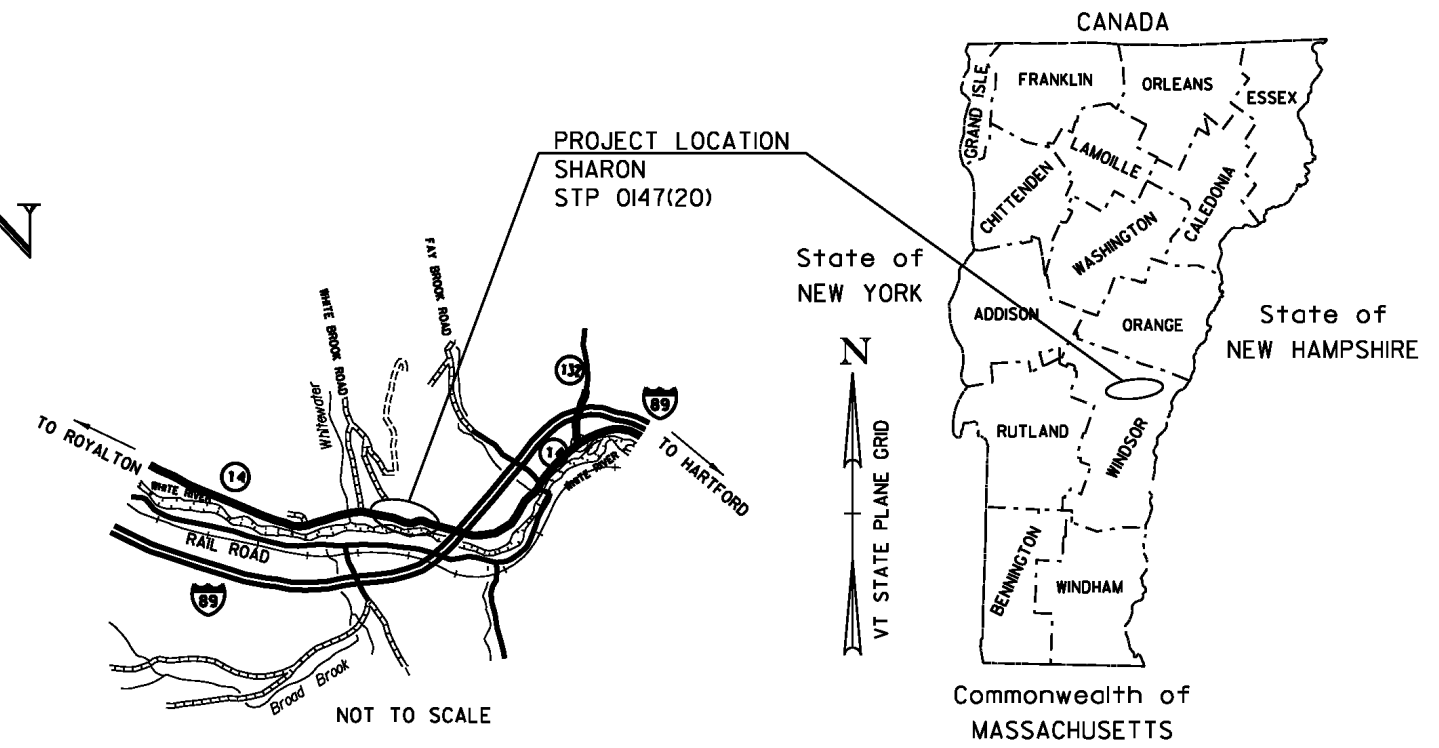


Original Drawing – Ink on Polymer meeting the requirements of 27 V.S.A. § 1403

THE FOLLOWING ROW PLAN SHEETS PERTAIN DIRECTLY TO THE ACQUISITION OF LAND AND RIGHTS NECESSARY TO CONSTRUCT THIS TRANSPORTATION PROJECT. SHEETS REGARDING SPECIFIC CONSTRUCTION DETAILS ARE NOT INCLUDED IN THIS RECORDED SET

STATE OF VERMONT AGENCY OF TRANSPORTATION



R.O.W. PLANS

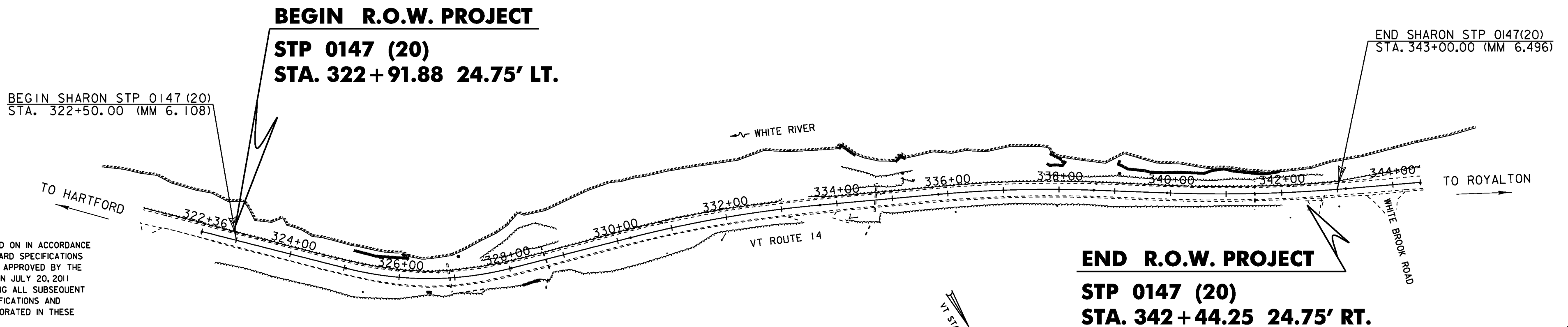
PROPOSED IMPROVEMENT TOWN OF SHARON COUNTY OF WINDSOR VT ROUTE 14 - MAJOR COLLECTOR

PROJECT LOCATION: BEGINNING IN THE TOWN OF SHARON ON VT ROUTE 14 AT MM 6.108 (STA. 322+50.00) EXTENDING NORTHERLY 0.388 MILES (2050 FT) TO MM 6.496 (STA. 343+00.00).

STATION TO STATION DATA	LENGTH	
	(FEET)	(MILES)
STA. 322+50.00 TO STA. 343+00.00 (MM 6.108 TO MM 6.496)	2050.00	0.388

TOTAL ROADWAY LENGTH =	2050.00	0.388
TOTAL PROJECT LENGTH =	2050.00	0.388
LENGTH OF ROW PROJECT =	1952.37	0.370

PROJECT DESCRIPTION: WORK TO BE PERFORMED UNDER THIS PROJECT INCLUDES ROADWAY RECONSTRUCTION, SLOPE STABILIZATION, RAISING A SECTION OF THE VERTICAL ALIGNMENT, CORRECTING SUPERELEVATION DEFICIENCIES, RESURFACING WITH BASE AND WEARING COURSES, NEW PAVEMENT MARKINGS, GUARDRAIL IMPROVEMENTS, DRAINAGE IMPROVEMENTS AND OTHER RELATED HIGHWAY ITEMS.



CONSTRUCTION IS TO BE CARRIED ON IN ACCORDANCE WITH THESE PLANS AND THE STANDARD SPECIFICATIONS FOR CONSTRUCTION DATED 2011, AS APPROVED BY THE FEDERAL HIGHWAY ADMINISTRATION ON JULY 20, 2011 FOR USE ON THIS PROJECT, INCLUDING ALL SUBSEQUENT REVISIONS AND SUCH REVISED SPECIFICATIONS AND SPECIAL PROVISIONS AS ARE INCORPORATED IN THESE PLANS.

QUALITY ASSURANCE PROGRAM : LEVEL 2	
SURVEYED BY :	DUBOIS & KING
SURVEYED DATE :	JANUARY, 2013
DATUM	
VERTICAL	NAVD 88
HORIZONTAL	NAD 83 (2011)

ALL DRIVES AS INDICATED ON PLANS ARE SUBJECT TO PERMITS PURSUANT TO TITLE 19 SECTION IIII, V.S.A.

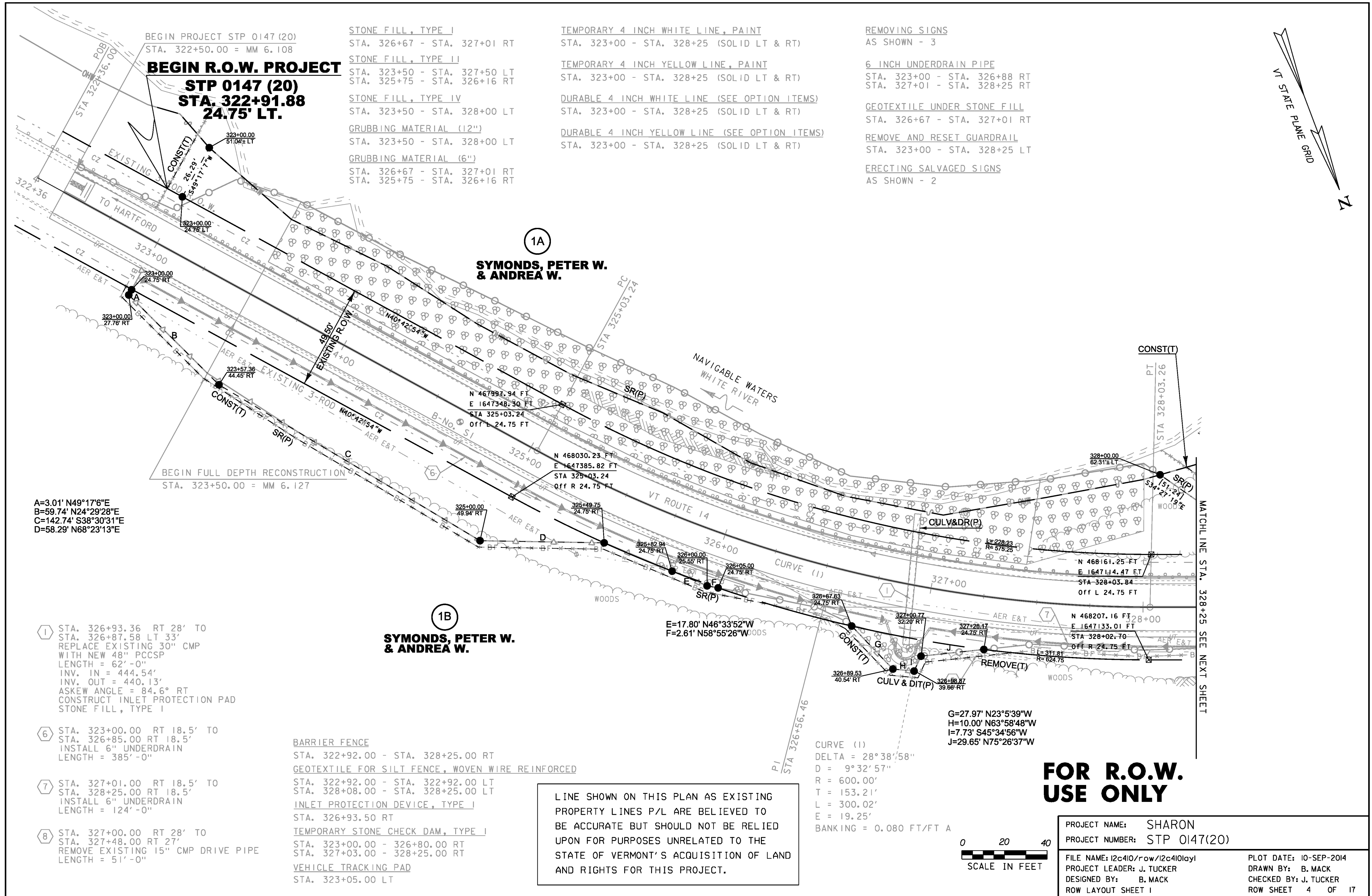


CHIEF OF RIGHT OF WAY	
APPROVED <i>Robert M. White</i>	DATE 9-10-14
PROJECT MANAGER : PAUL LIBBY	
PROJECT NAME : SHARON	
PROJECT NUMBER : STP 0147 (20)	
SHEET 1 OF 17 SHEETS	

FINAL PLANS - 8/15/14

12c410

Original Drawing — Ink on Polymer meeting the requirements of 27 V.S.A. § 1403



BEGIN PROJECT STP 0147 (20)
 STA. 322+50.00 = MM 6.108
BEGIN R.O.W. PROJECT
STP 0147 (20)
STA. 322+91.88
24.75' LT.

- STONE FILL, TYPE I
 STA. 326+67 - STA. 327+01 RT
- STONE FILL, TYPE II
 STA. 323+50 - STA. 327+50 LT
 STA. 325+75 - STA. 326+16 RT
- STONE FILL, TYPE IV
 STA. 323+50 - STA. 328+00 LT
- GRUBBING MATERIAL (12")
 STA. 323+50 - STA. 328+00 LT
- GRUBBING MATERIAL (6")
 STA. 326+67 - STA. 327+01 RT
 STA. 325+75 - STA. 326+16 RT

- TEMPORARY 4 INCH WHITE LINE, PAINT
 STA. 323+00 - STA. 328+25 (SOLID LT & RT)
- TEMPORARY 4 INCH YELLOW LINE, PAINT
 STA. 323+00 - STA. 328+25 (SOLID LT & RT)
- DURABLE 4 INCH WHITE LINE (SEE OPTION ITEMS)
 STA. 323+00 - STA. 328+25 (SOLID LT & RT)
- DURABLE 4 INCH YELLOW LINE (SEE OPTION ITEMS)
 STA. 323+00 - STA. 328+25 (SOLID LT & RT)

- REMOVING SIGNS
 AS SHOWN - 3
- 6 INCH UNDERDRAIN PIPE
 STA. 323+00 - STA. 326+88 RT
 STA. 327+01 - STA. 328+25 RT
- GEOTEXTILE UNDER STONE FILL
 STA. 326+67 - STA. 327+01 RT
- REMOVE AND RESET GUARDRAIL
 STA. 323+00 - STA. 328+25 LT
- ERECTING SALVAGED SIGNS
 AS SHOWN - 2

1A
SYMONDS, PETER W.
& ANDREA W.

1B
SYMONDS, PETER W.
& ANDREA W.

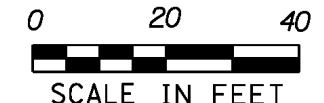
A=3.01' N49°17'6"E
 B=59.74' N24°29'28"E
 C=142.74' S38°30'31"E
 D=58.29' N68°23'13"E

- 1 STA. 326+93.36 RT 28' TO
 STA. 326+87.58 LT 33'
 REPLACE EXISTING 30" CMP
 WITH NEW 48" PCCSP
 LENGTH = 62'-0"
 INV. IN = 444.54'
 INV. OUT = 440.13'
 ASKEW ANGLE = 84.6° RT
 CONSTRUCT INLET PROTECTION PAD
 STONE FILL, TYPE I
- 6 STA. 323+00.00 RT 18.5' TO
 STA. 326+85.00 RT 18.5'
 INSTALL 6" UNDERDRAIN
 LENGTH = 385'-0"
- 7 STA. 327+01.00 RT 18.5' TO
 STA. 328+25.00 RT 18.5'
 INSTALL 6" UNDERDRAIN
 LENGTH = 124'-0"
- 8 STA. 327+00.00 RT 28' TO
 STA. 327+48.00 RT 27'
 REMOVE EXISTING 15" CMP DRIVE PIPE
 LENGTH = 51'-0"

- BARRIER FENCE
 STA. 322+92.00 - STA. 328+25.00 RT
- GEOTEXTILE FOR SILT FENCE, WOVEN WIRE REINFORCED
 STA. 322+92.00 - STA. 322+92.00 LT
 STA. 328+08.00 - STA. 328+25.00 LT
- INLET PROTECTION DEVICE, TYPE I
 STA. 326+93.50 RT
- TEMPORARY STONE CHECK DAM, TYPE I
 STA. 323+00.00 - 326+80.00 RT
 STA. 327+03.00 - 328+25.00 RT
- VEHICLE TRACKING PAD
 STA. 323+05.00 LT

LINE SHOWN ON THIS PLAN AS EXISTING
 PROPERTY LINES P/L ARE BELIEVED TO
 BE ACCURATE BUT SHOULD NOT BE RELIED
 UPON FOR PURPOSES UNRELATED TO THE
 STATE OF VERMONT'S ACQUISITION OF LAND
 AND RIGHTS FOR THIS PROJECT.

CURVE (1)
 DELTA = 28°38'58"
 D = 9°32'57"
 R = 600.00'
 T = 153.21'
 L = 300.02'
 E = 19.25'
 BANKING = 0.080 FT/FT A



**FOR R.O.W.
 USE ONLY**

PROJECT NAME: SHARON
 PROJECT NUMBER: STP 0147(20)
 FILE NAME: I2c410/row/I2c410lay
 PROJECT LEADER: J. TUCKER
 DESIGNED BY: B. MACK
 ROW LAYOUT SHEET I

PLOT DATE: 10-SEP-2014
 DRAWN BY: B. MACK
 CHECKED BY: J. TUCKER
 ROW SHEET 4 OF 17

STONE FILL, TYPE I
 STA. 328+53 - STA. 328+67 LT
 STA. 328+59 - STA. 328+90 RT

STONE FILL, TYPE II
 STA. 330+00 - STA. 331+50 LT

GRUBBING MATERIAL (12")
 STA. 330+00 - STA. 331+50 LT

GRUBBING MATERIAL (6")
 STA. 328+59 - STA. 328+90 RT

GEOTEXTILE UNDER STONE FILL
 STA. 328+53 - STA. 328+67 LT
 STA. 328+59 - STA. 328+90 RT

TEMPORARY 4 INCH WHITE LINE, PAINT
 STA. 328+25 - STA. 333+00 (SOLID LT & RT)

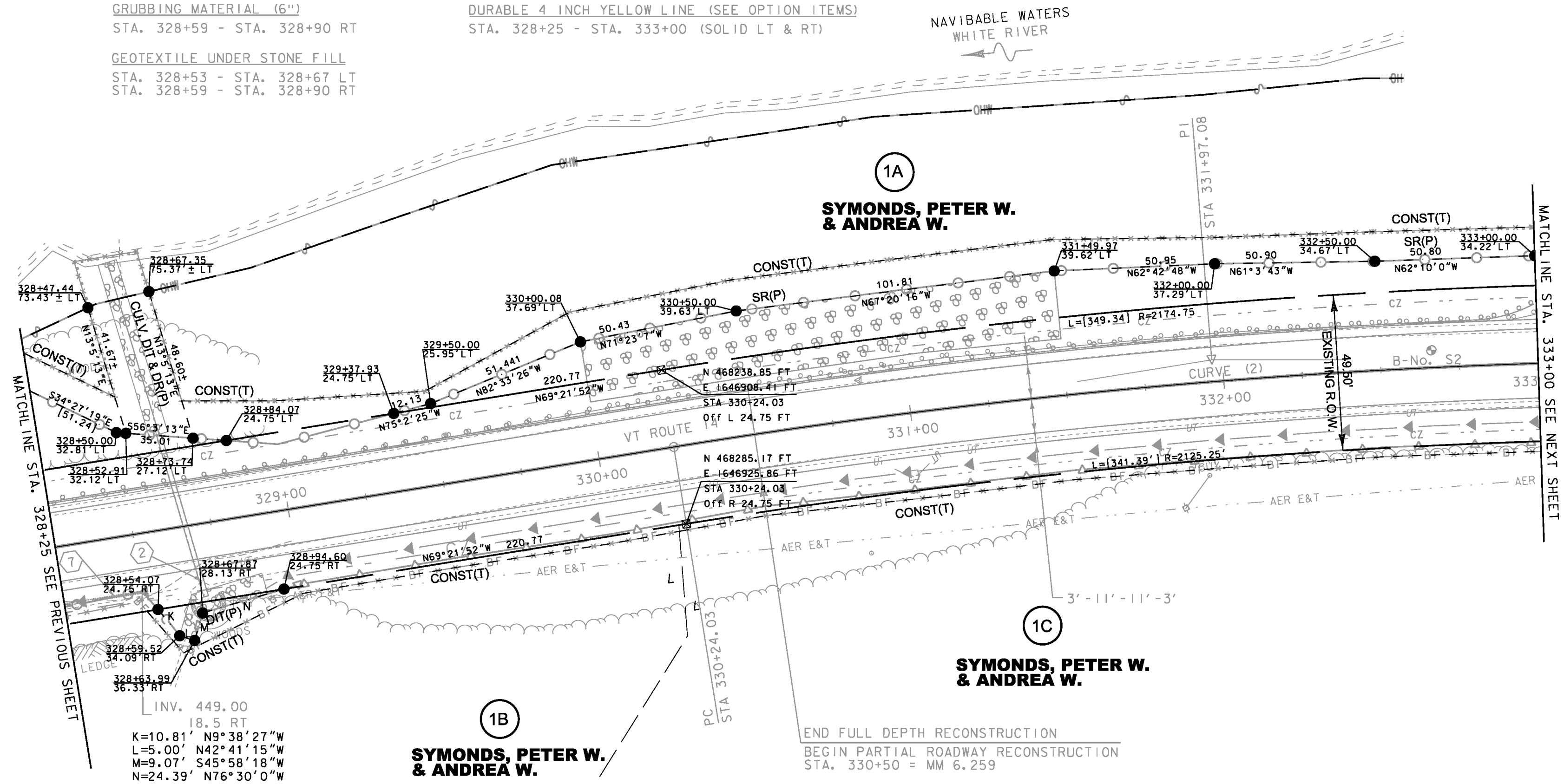
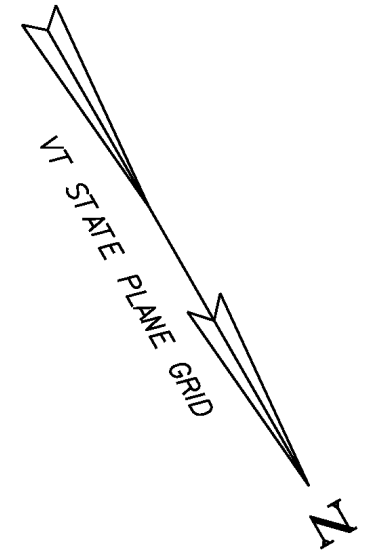
TEMPORARY 4 INCH YELLOW LINE, PAINT
 STA. 328+25 - STA. 333+00 (SOLID LT & RT)

DURABLE 4 INCH WHITE LINE (SEE OPTION ITEMS)
 STA. 328+25 - STA. 333+00 (SOLID LT & RT)

DURABLE 4 INCH YELLOW LINE (SEE OPTION ITEMS)
 STA. 328+25 - STA. 333+00 (SOLID LT & RT)

6 INCH UNDERDRAIN PIPE
 STA. 328+25 - STA. 328+50 RT

REMOVE AND RESET GUARDRAIL
 STA. 328+25 - STA. 333+00 LT



- ② STA. 328+70.00 RT 23' TO STA. 328+63.30 LT 30' REPLACE EXISTING 15" CMP WITH NEW 24" CPEP (SL) LENGTH = 54'-0" INV. IN = 449.93' INV. OUT = 446.77' ASKEW ANGLE = 82.9°RT CONSTRUCT INLET PROTECTION PAD STONE FILL, TYPE I
- ⑦ STA. 328+25.00 RT 18.5' TO STA. 328+50.00 RT 18.5' INSTALL 6" UNDERDRAIN LENGTH = 25'-0"

BARRIER FENCE
 STA. 328+25.00 - STA. 333+00.00 RT

GEOTEXTILE FOR SILT FENCE, WOVEN WIRE REINFORCED
 STA. 328+25.00 - STA. 333+00.00 LT

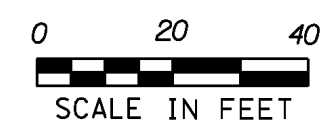
INLET PROTECTION DEVICE, TYPE I
 STA. 328+70.00 RT

TEMPORARY STONE CHECK DAM, TYPE I
 STA. 328+25.00 - 328+52.00 RT
 STA. 328+97.00 - 333+00.00 RT

LINE SHOWN ON THIS PLAN AS EXISTING PROPERTY LINES P/L ARE BELIEVED TO BE ACCURATE BUT SHOULD NOT BE RELIED UPON FOR PURPOSES UNRELATED TO THE STATE OF VERMONT'S ACQUISITION OF LAND AND RIGHTS FOR THIS PROJECT.

CURVE (2)
 DELTA = 9°12'13"
 D = 2°39'54"
 R = 2150.00'
 T = 173.05'
 L = 345.36'
 E = 6.95'
 BANKING = 0.049 FT/FT AT 50 MPH

FOR R.O.W. USE ONLY



PROJECT NAME: SHARON	FILE NAME: z12c410bdr.dgn	PLOT DATE: 10-SEP-2014
PROJECT NUMBER: STP 0147 (20)	PROJECT LEADER: J. TUCKER	DRAWN BY: B. MACK
	DESIGNED BY: B. MACK	CHECKED BY: J. TUCKER
	ROW LAYOUT SHEET 2	ROW SHEET 5 OF 17

Original Drawing – Ink on Polymer meeting the requirements of 27 V.S.A. § 1403

STONE FILL, TYPE I
STA. 334+45 - STA. 334+85 RT

STONE FILL, TYPE II
STA. 334+00 - STA. 337+25 LT

STONE FILL, TYPE IV
STA. 334+00 - STA. 335+30 LT

GEOTEXTILE UNDER STONE FILL
STA. 334+45 - STA. 334+85 RT

GRUBBING MATERIAL (12")
STA. 334+00 - STA. 337+25 LT

GRUBBING MATERIAL (6")
STA. 334+45 - STA. 334+85 RT

TEMPORARY 4 INCH WHITE LINE, PAINT
STA. 333+00 - STA. 337+25 (SOLID LT & RT)

TEMPORARY 4 INCH YELLOW LINE, PAINT
STA. 333+00 - STA. 337+25 (SOLID LT & RT)

DURABLE 4 INCH WHITE LINE (SEE OPTION ITEMS)
STA. 333+00 - STA. 337+25 (SOLID LT & RT)

DURABLE 4 INCH YELLOW LINE (SEE OPTION ITEMS)
STA. 333+00 - STA. 337+25 (SOLID LT & RT)

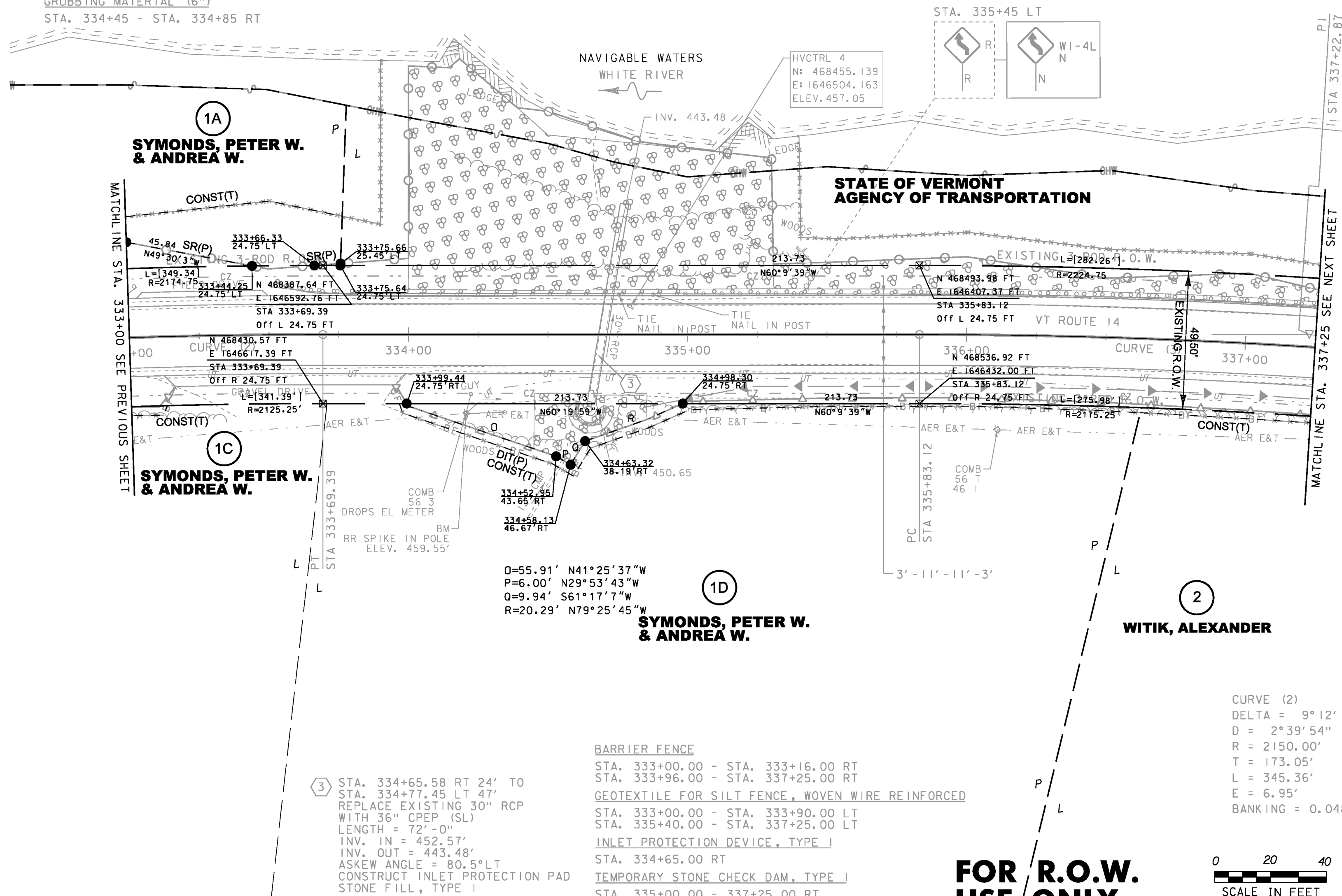
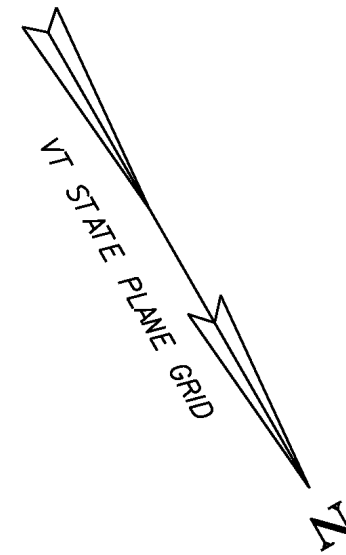
REMOVING SIGNS
AS SHOWN - I

REMOVE AND RESET GUARDRAIL
STA. 334+00 - STA. 337+25 LT

REMOVAL AND DISPOSAL OF GUARDRAIL
STA. 333+50 TO STA. 334+00 LT

STEEL BEAM GUARDRAIL, GALVANIZED
STA. 333+50 - STA. 334+00 LT

ANCHOR FOR STEEL BEAM RAIL
STA. 333+50 LT



LINE SHOWN ON THIS PLAN AS EXISTING PROPERTY LINES P/L ARE BELIEVED TO BE ACCURATE BUT SHOULD NOT BE RELIED UPON FOR PURPOSES UNRELATED TO THE STATE OF VERMONT'S ACQUISITION OF LAND AND RIGHTS FOR THIS PROJECT.

3 STA. 334+65.58 RT 24' TO STA. 334+77.45 LT 47' REPLACE EXISTING 30" RCP WITH 36" CPEP (SL) LENGTH = 72' - 0" INV. IN = 452.57' INV. OUT = 443.48' ASKEW ANGLE = 80.5° LT CONSTRUCT INLET PROTECTION PAD STONE FILL, TYPE I

BARRIER FENCE
STA. 333+00.00 - STA. 333+16.00 RT
STA. 333+96.00 - STA. 337+25.00 RT

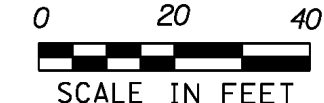
GEOTEXTILE FOR SILT FENCE, WOVEN WIRE REINFORCED
STA. 333+00.00 - STA. 333+90.00 LT
STA. 335+40.00 - STA. 337+25.00 LT

INLET PROTECTION DEVICE, TYPE I
STA. 334+65.00 RT

TEMPORARY STONE CHECK DAM, TYPE I
STA. 335+00.00 - 337+25.00 RT

CURVE (2)	CURVE (3)
DELTA = 9° 12' 13"	DELTA = 7° 16' 10"
D = 2° 39' 54"	D = 2° 36' 16"
R = 2150.00'	R = 2200.00'
T = 173.05'	T = 139.75'
L = 345.36'	L = 279.12'
E = 6.95'	E = 4.43'
BANKING = 0.048 FT/FT AT 50 MPH	BANKING = 0.048 FT/FT AT 50 MPH

FOR R.O.W. USE ONLY

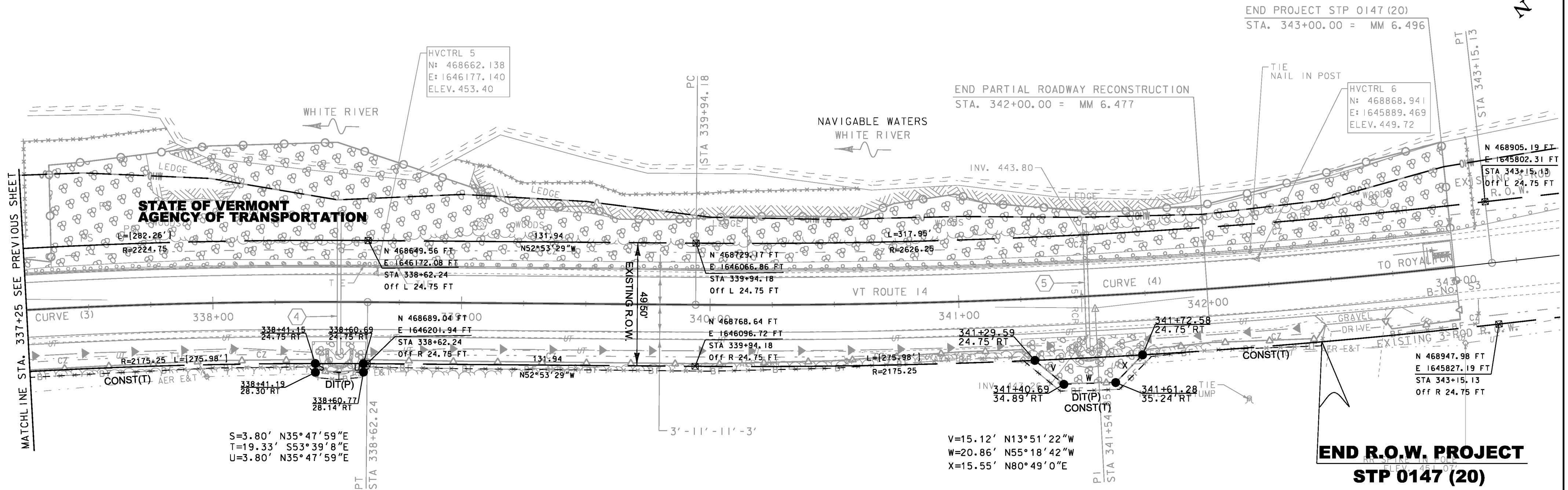
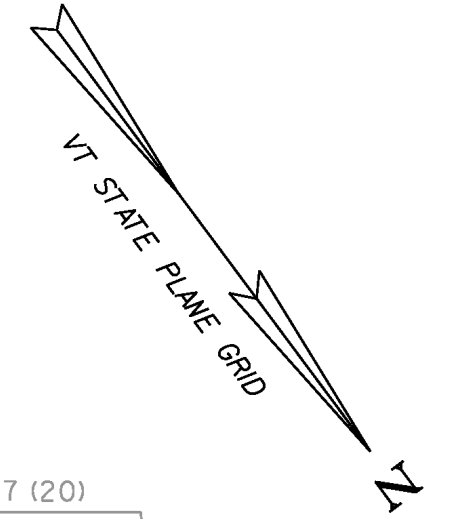


PROJECT NAME: SHARON	PLOT DATE: 10-SEP-2014
PROJECT NUMBER: STP 0147 (20)	DRAWN BY: B. MACK
FILE NAME: z12c410bdr.dgn	CHECKED BY: J. TUCKER
PROJECT LEADER: J. TUCKER	ROW LAYOUT SHEET 3
DESIGNED BY: B. MACK	ROW SHEET 6 OF 17

STONE FILL, TYPE I
 STA. 337+25 - STA. 343+00 LT
 STONE FILL, TYPE IV
 STA. 337+35 - STA. 343+00 LT
 REMOVE AND RESET GUIDERAIL
 STA. 337+25 - STA. 343+00 LT

STONE FILL, TYPE I
 STA. 338+40 - STA. 338+62 RT
 STA. 341+25 - STA. 341+75 RT
 GRUBBING MATERIAL (12")
 STA. 337+25 - STA. 343+00 LT
 GRUBBING MATERIAL (6")
 STA. 338+40 - STA. 338+62 RT
 STA. 341+25 - STA. 341+75 RT
 GEOTEXTILE UNDER STONE FILL
 STA. 338+40 - STA. 338+62 RT
 STA. 341+25 - STA. 341+75 RT

TEMPORARY 4 INCH WHITE LINE, PAINT
 STA. 337+25 - STA. 343+00 (SOLID LT & RT)
 TEMPORARY 4 INCH YELLOW LINE, PAINT
 STA. 337+25 - STA. 343+00 (SOLID LT & RT)
 DURABLE 4 INCH WHITE LINE (SEE OPTION ITEMS)
 STA. 337+25 - STA. 343+00 (SOLID LT & RT)
 DURABLE 4 INCH YELLOW LINE (SEE OPTION ITEMS)
 STA. 337+25 - STA. 343+00 (SOLID LT & RT)



END R.O.W. PROJECT
STP 0147 (20)
STA. 342+44.25 24.75' LT.

2
WITIK, ALEXANDER

LINE SHOWN ON THIS PLAN AS EXISTING PROPERTY LINES P/L ARE BELIEVED TO BE ACCURATE BUT SHOULD NOT BE RELIED UPON FOR PURPOSES UNRELATED TO THE STATE OF VERMONT'S ACQUISITION OF LAND AND RIGHTS FOR THIS PROJECT.

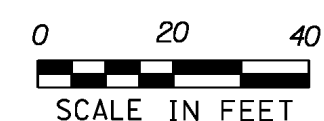
FOR R.O.W. USE ONLY

- ④ STA. 338+50.75 RT 21.2' TO STA. 338+50.75 LT 34.8' INSTALL NEW 18" CPEP (SL) LENGTH = 56'-0" INV. IN = 449.64' INV. OUT = 445.65' ASKEW ANGLE = 90.0° CONSTRUCT INLET PROTECTION PAD STONE FILL, TYPE I
- ⑤ STA. 341+51.13 RT 21' TO STA. 341+52.08 LT 29' REPLACE EXISTING 15" RCP WITH NEW 24" CPEP (SL) LENGTH = 50'-0" INV. IN = 447.89' INV. OUT = 442.96' ASKEW ANGLE = 83.9° LT CONSTRUCT INLET PROTECTION PAD STONE FILL, TYPE I

- BARRIER FENCE**
 STA. 337+25.00 - STA. 342+42.00 RT
 STA. 342+71.00 - STA. 343+09.00 RT
- GEOTEXTILE FOR SILT FENCE, WOVEN WIRE REINFORCED**
 STA. 337+25.00 - STA. 337+83.00 LT
 STA. 338+98.00 - STA. 340+60.00 LT
 STA. 343+10.00 - STA. 343+10.00 LT
- INLET PROTECTION DEVICE, TYPE I**
 STA. 338+51.00 RT
 STA. 341+51.00 RT
- TEMPORARY STONE CHECK DAM, TYPE I**
 STA. 337+25.00 - 338+30.00 RT
 STA. 338+65.00 - 341+36.00 RT
 STA. 341+75.00 - 342+36.00 RT
- VEHICLE TRACKING PAD**
 STA. 342+94.00 LT

CURVE (4)
 DELTA = 6°56'21"
 D = 2°09'44"
 R = 2650.00'
 T = 160.67'
 L = 320.95'
 E = 4.87'
 BANKING = 0.041 FT/FT AT 50 MPH

CURVE (3)
 DELTA = 7°16'10"
 D = 2°36'16"
 R = 2200.00'
 T = 139.75'
 L = 279.12'
 E = 4.43'
 BANKING = 0.048 FT/FT AT 50 MPH

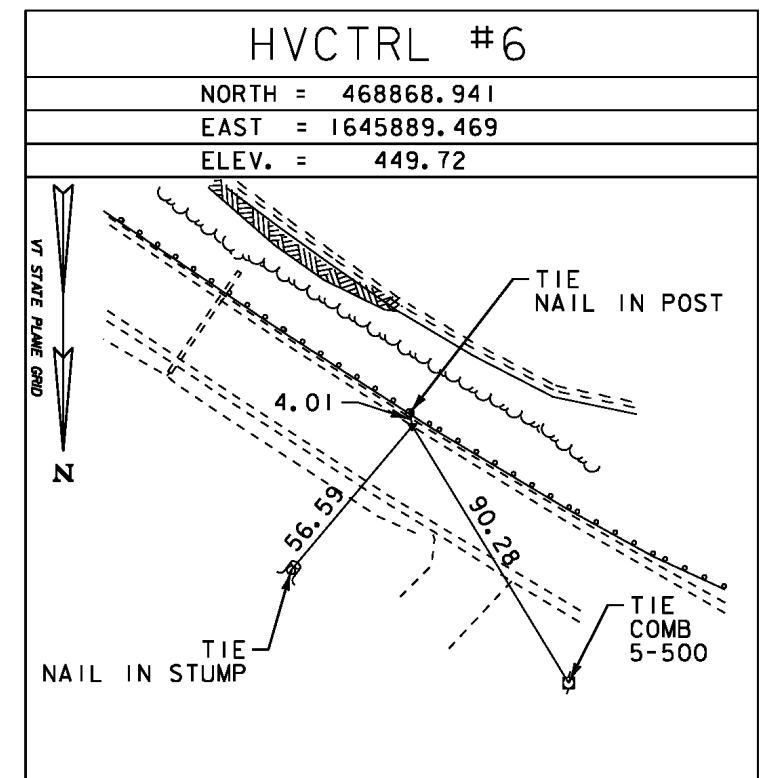
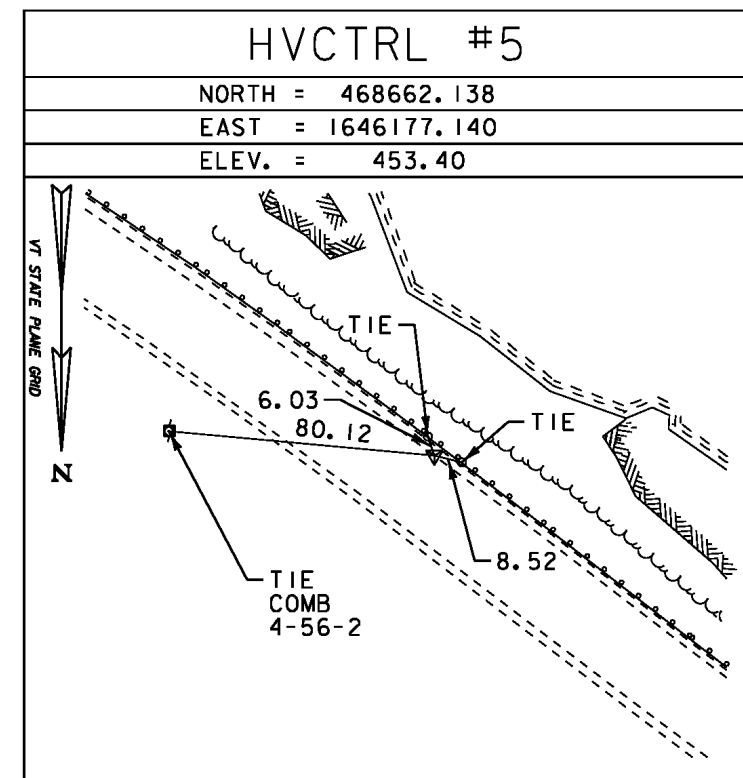
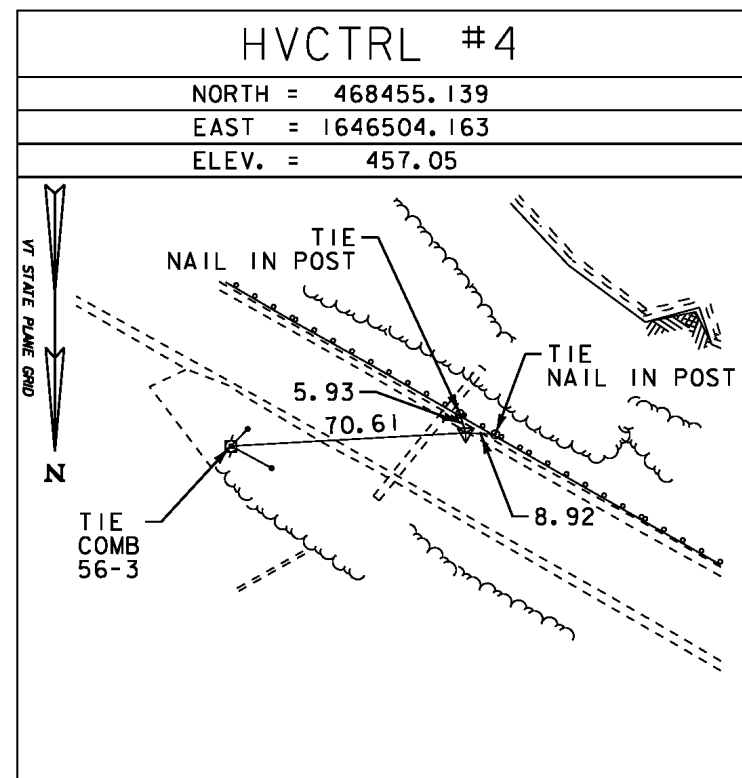
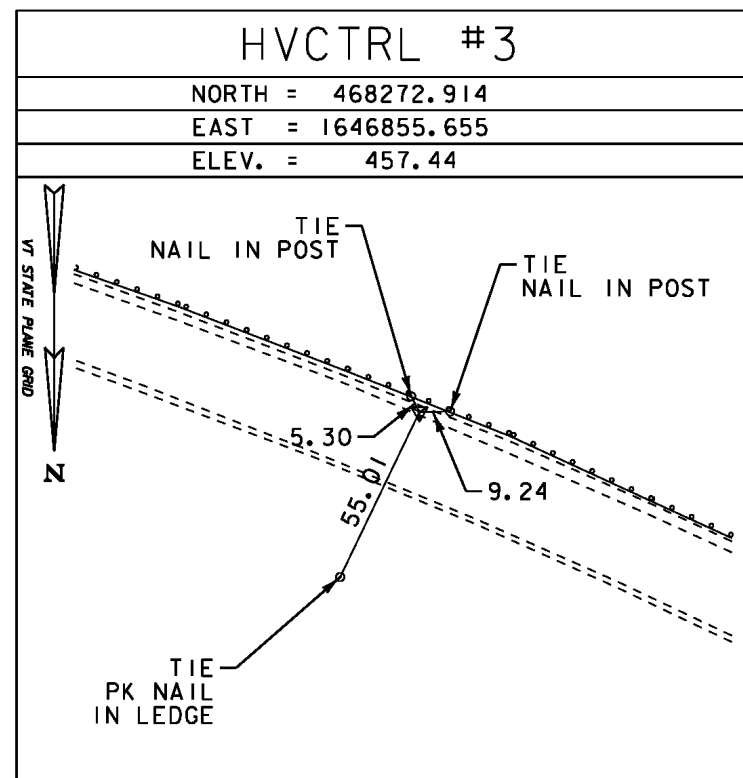
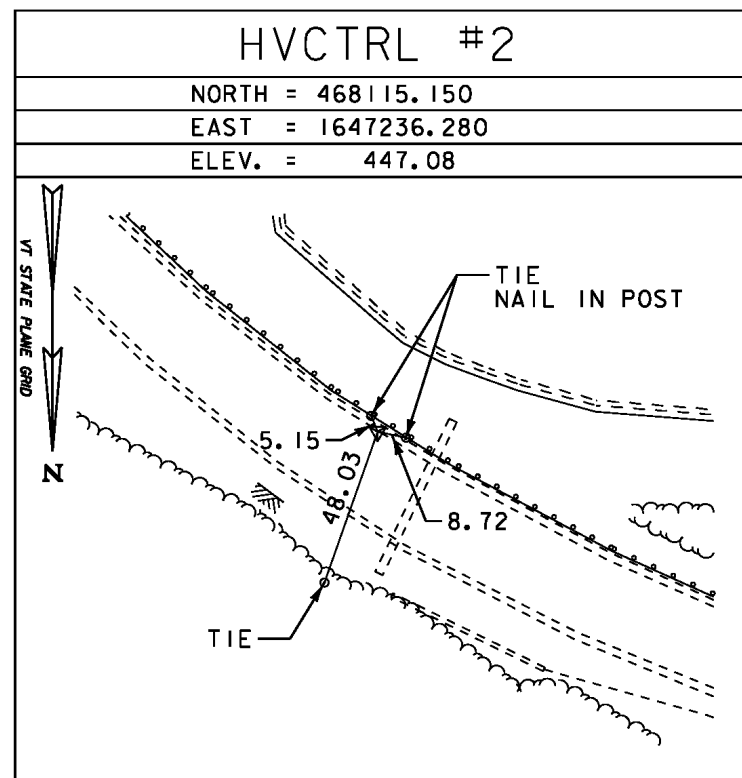


PROJECT NAME: SHARON	PLOT DATE: 10-SEP-2014
PROJECT NUMBER: STP 0147 (20)	DRAWN BY: B. MACK
FILE NAME: z12c410bdr.dgn	CHECKED BY: J. TUCKER
PROJECT LEADER: J. TUCKER	ROW SHEET 7 OF 17
DESIGNED BY: B. MACK	
ROW LAYOUT SHEET 4	

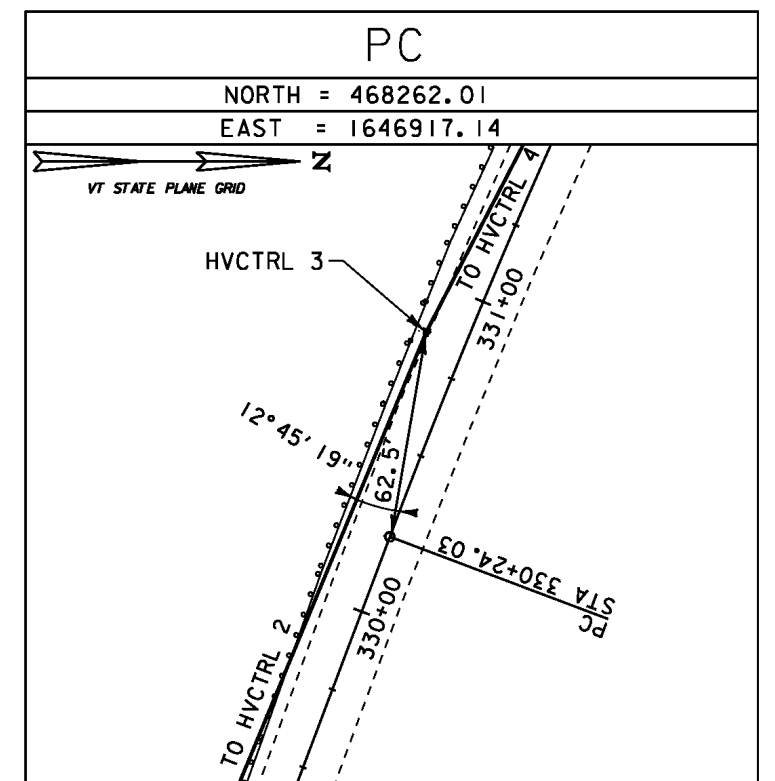
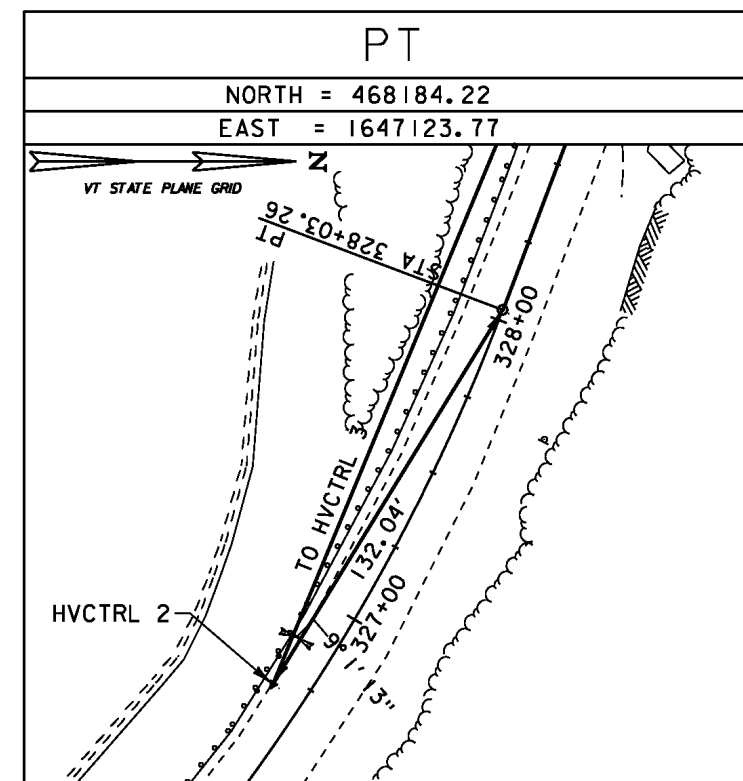
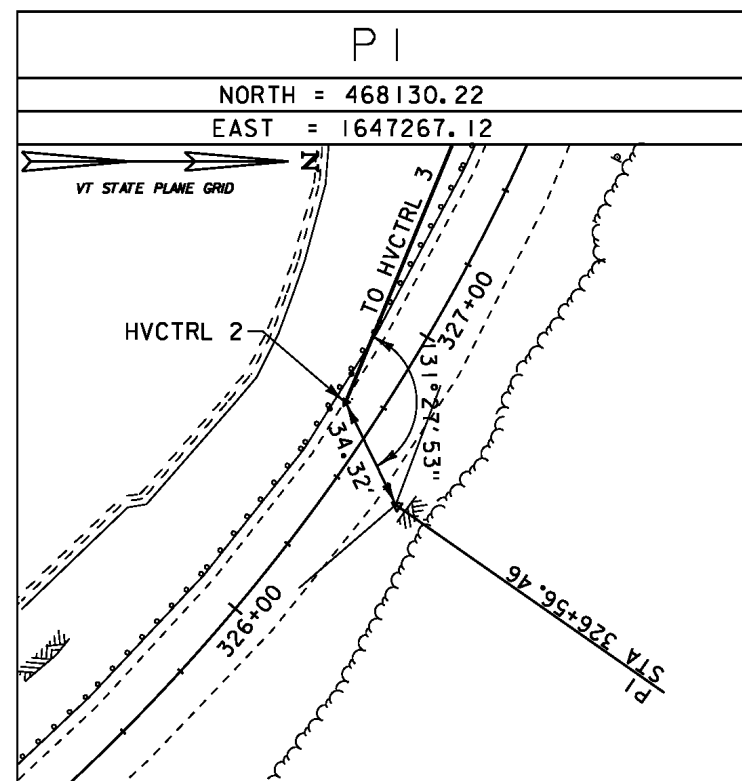
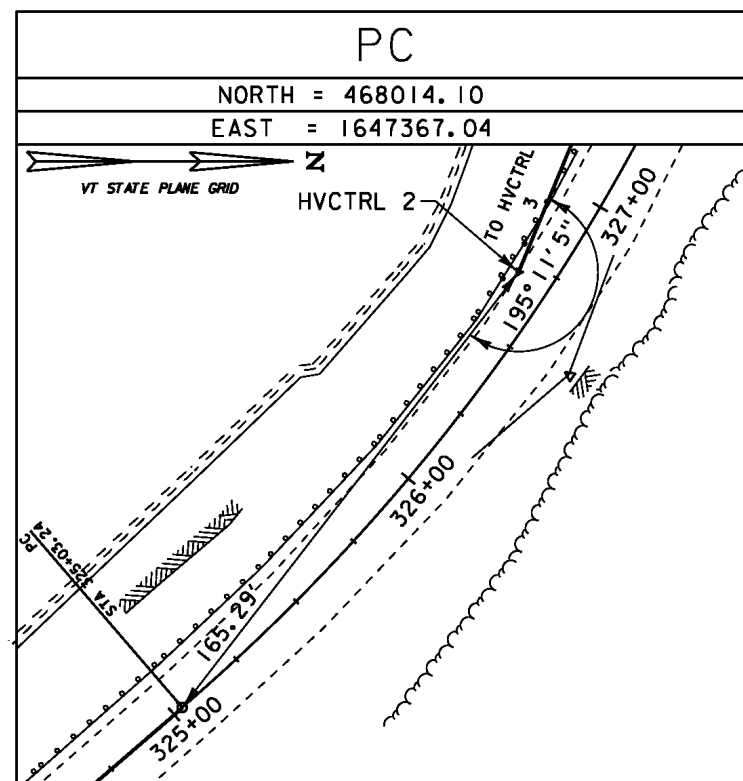
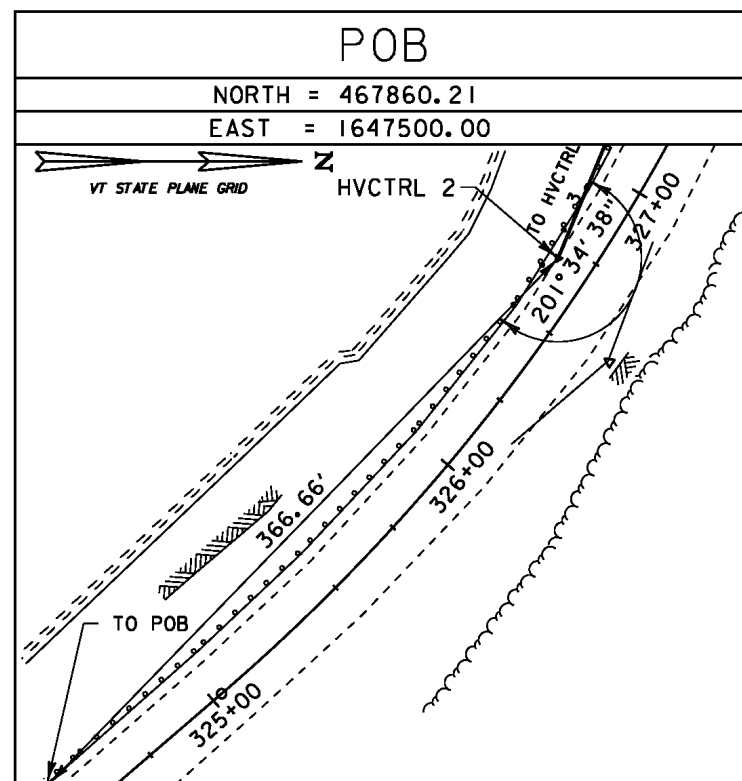
GPS CONTROL POINTS

NONE

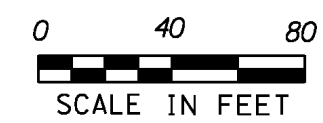
TRAVERSE TIES



ALIGNMENT TIES

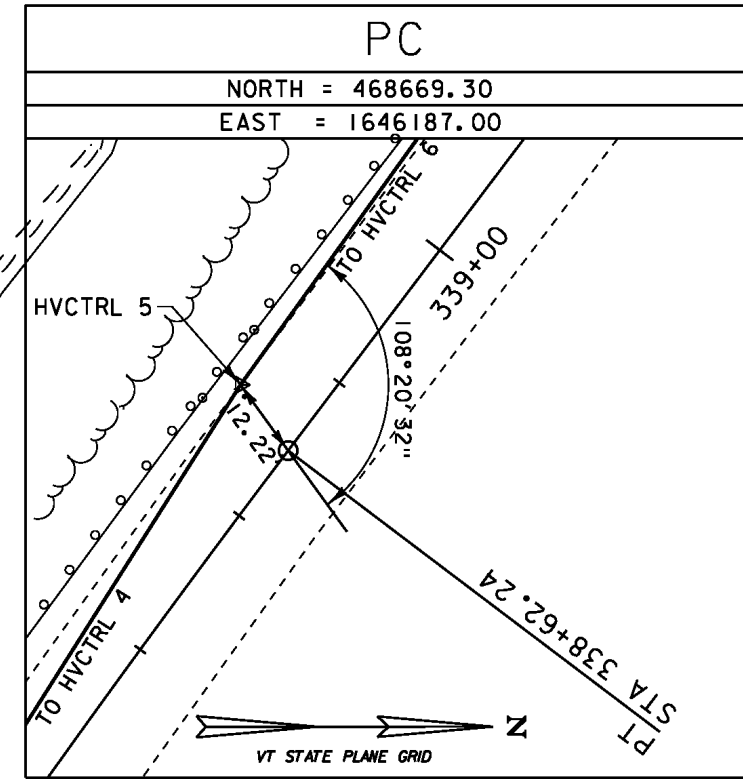
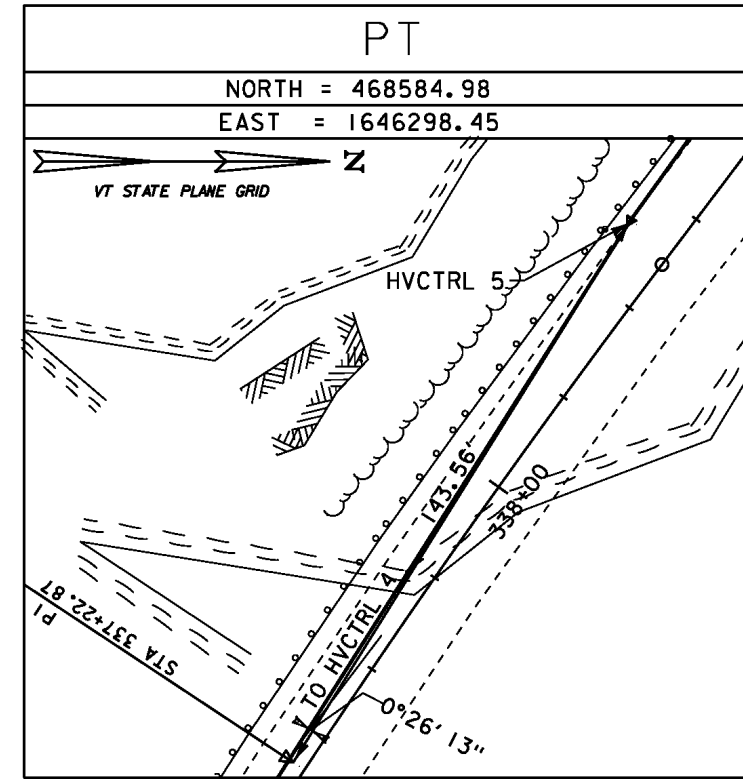
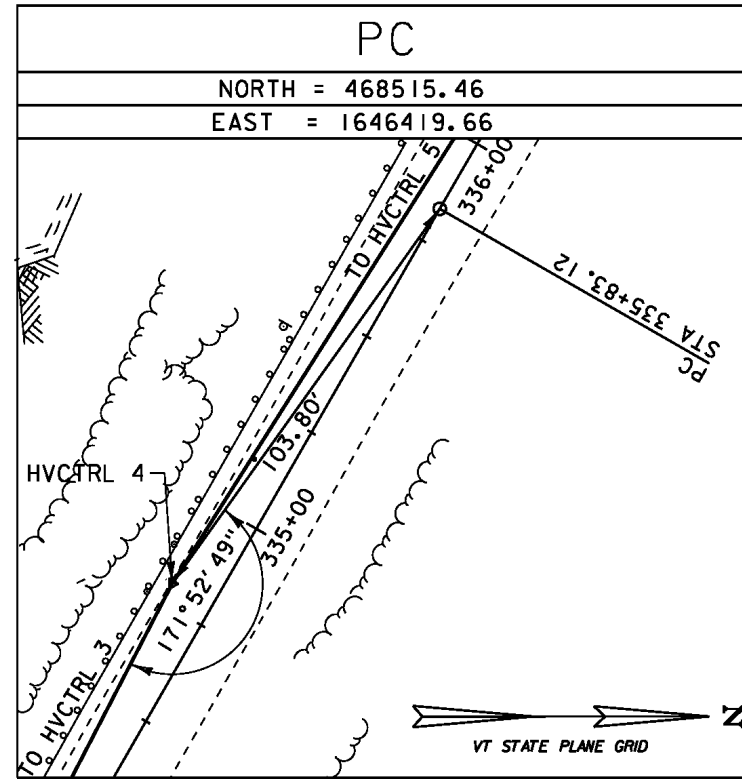
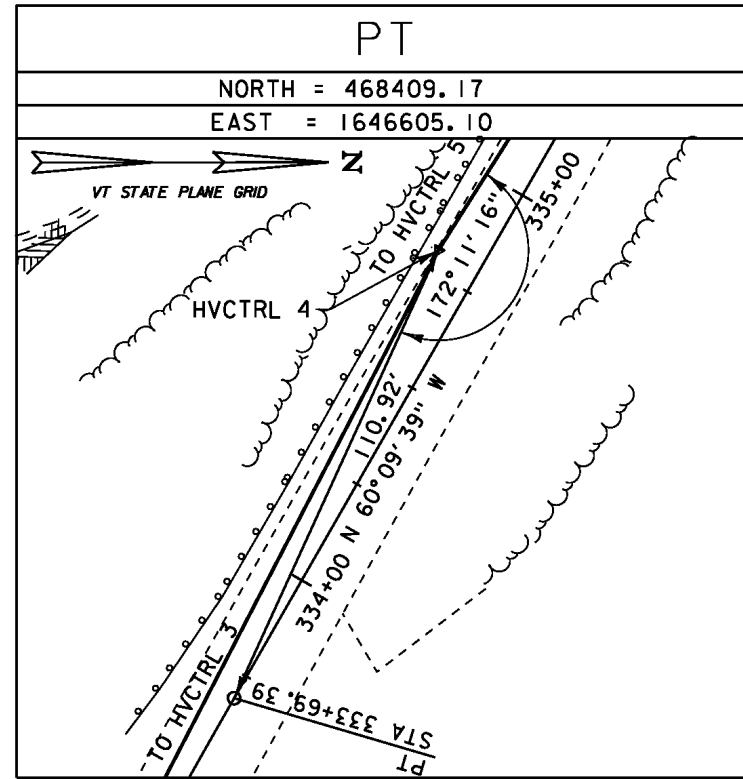
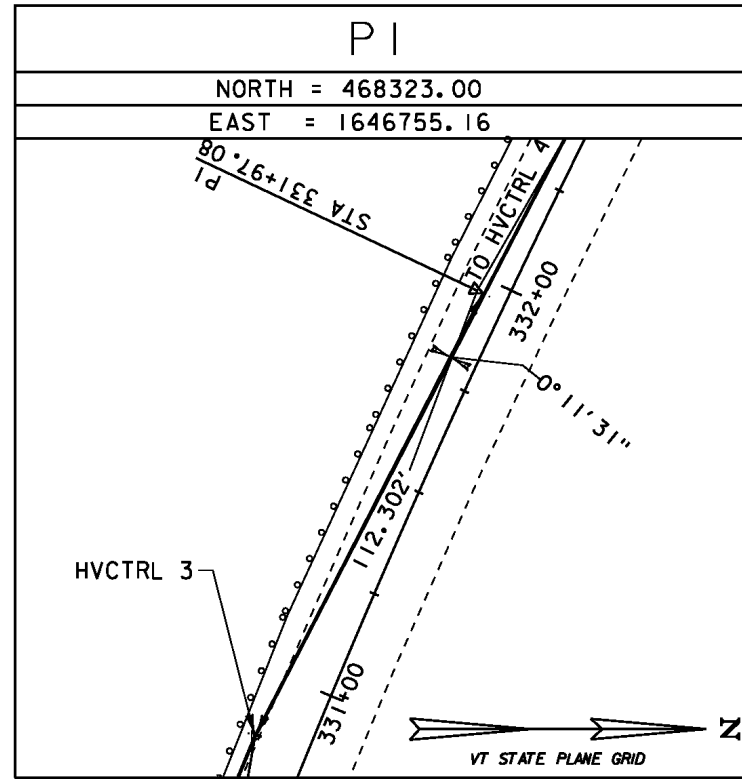


DATUM	
VERTICAL	NAVD 88
HORIZONTAL	NAD 83 (2011)
ADJUSTMENT	NONE

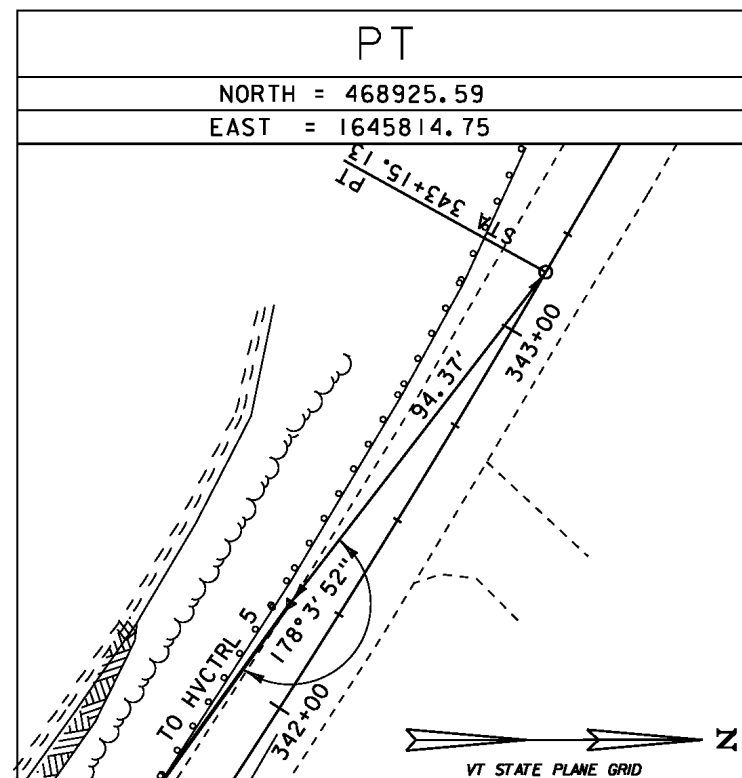
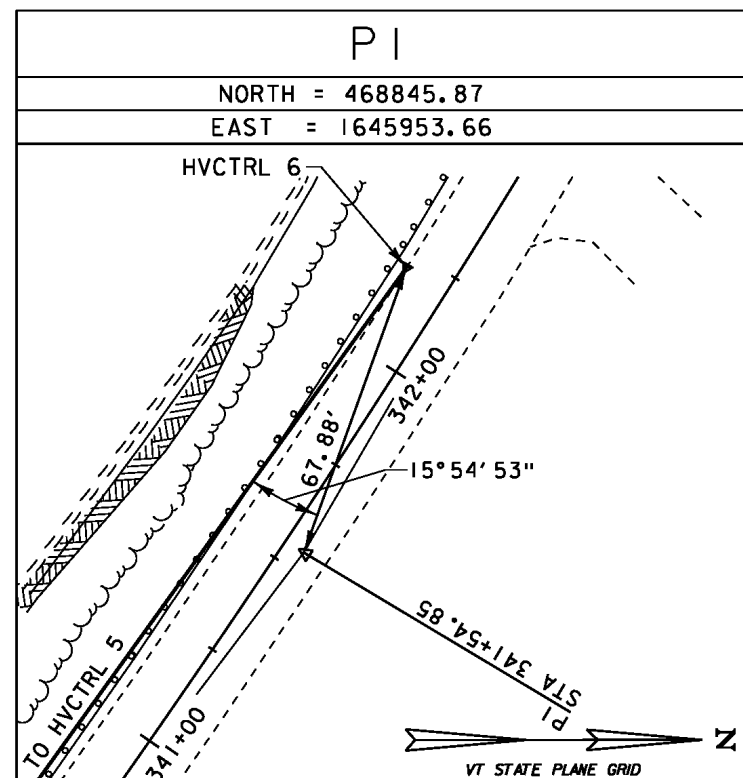
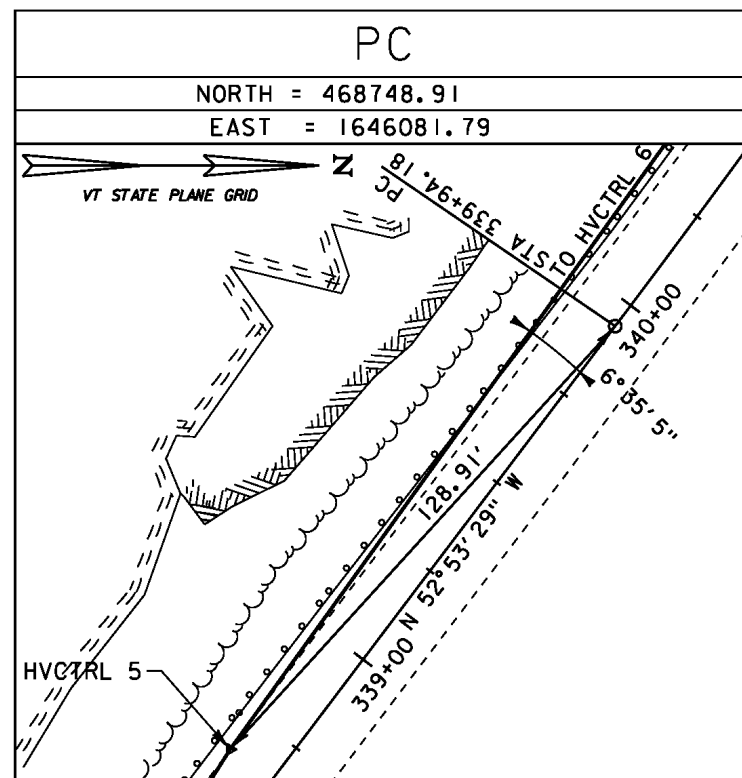


PROJECT NAME:	SHARON	FILE NAME:	z12c410t1.dgn	PLOT DATE:	10-SEP-2014
PROJECT NUMBER:	STP 0147 (20)	PROJECT LEADER:	J. TUCKER	DRAWN BY:	B. MACK
		DESIGNED BY:	B. MACK	CHECKED BY:	A. SANZ
		TIE SHEET 1		ROW SHEET	10 OF 17

ALIGNMENT TIES

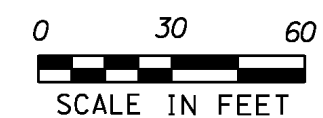


ALIGNMENT TIES



ALIGNMENT TIES

DATUM	
VERTICAL	NAVD 88
HORIZONTAL	NAD 83 (2011)
ADJUSTMENT	NONE



PROJECT NAME:	SHARON	PLOT DATE:	10-SEP-2014
PROJECT NUMBER:	STP 0147 (20)	DRAWN BY:	B. MACK
FILE NAME:	z12c410+i.dgn	DESIGNED BY:	B. MACK
		CHECKED BY:	A. SANZ
		TIE SHEET	2
		ROW SHEET	11 OF 17