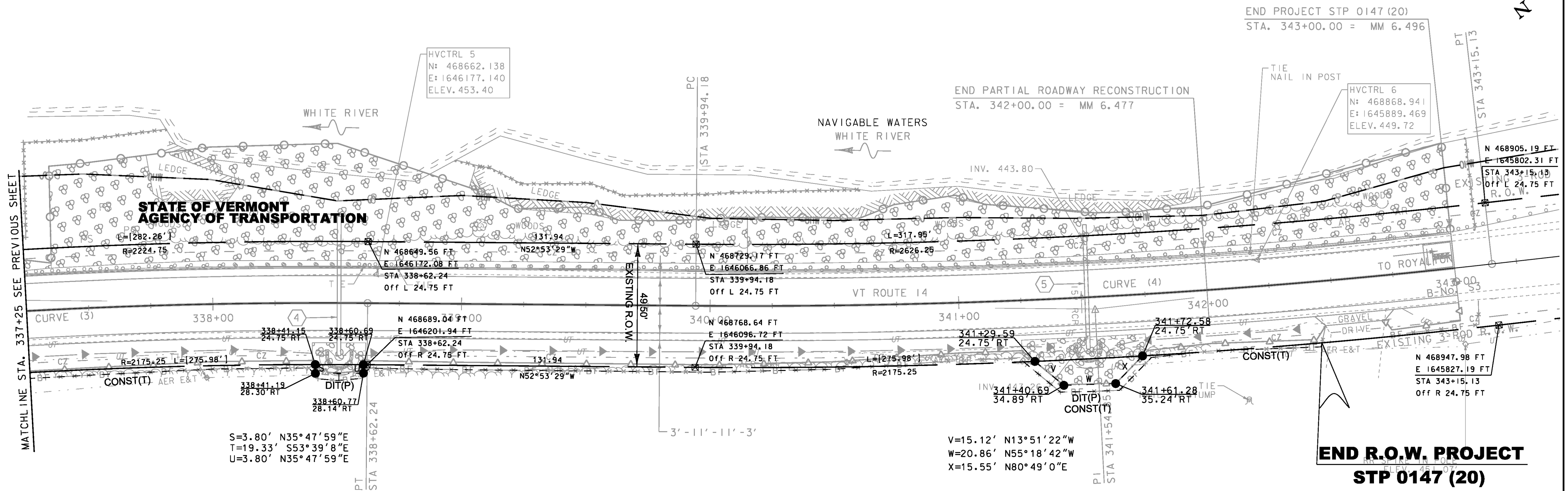
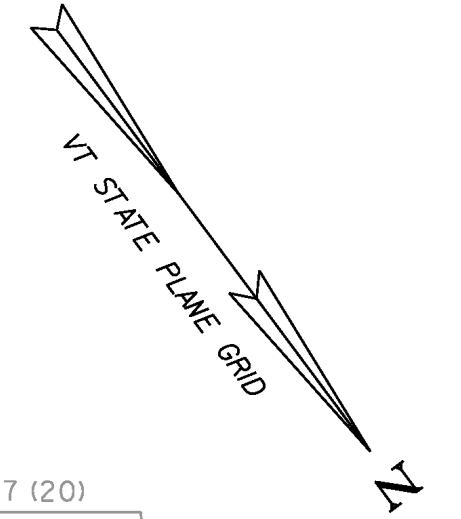


STONE FILL, TYPE I
 STA. 337+25 - STA. 343+00 LT
 STONE FILL, TYPE IV
 STA. 337+35 - STA. 343+00 LT
 REMOVE AND RESET GUIDERAIL
 STA. 337+25 - STA. 343+00 LT

STONE FILL, TYPE I
 STA. 338+40 - STA. 338+62 RT
 STA. 341+25 - STA. 341+75 RT
 GRUBBING MATERIAL (12")
 STA. 337+25 - STA. 343+00 LT
 GRUBBING MATERIAL (6")
 STA. 338+40 - STA. 338+62 RT
 STA. 341+25 - STA. 341+75 RT
 GEOTEXTILE UNDER STONE FILL
 STA. 338+40 - STA. 338+62 RT
 STA. 341+25 - STA. 341+75 RT

TEMPORARY 4 INCH WHITE LINE, PAINT
 STA. 337+25 - STA. 343+00 (SOLID LT & RT)
 TEMPORARY 4 INCH YELLOW LINE, PAINT
 STA. 337+25 - STA. 343+00 (SOLID LT & RT)
 DURABLE 4 INCH WHITE LINE (SEE OPTION ITEMS)
 STA. 337+25 - STA. 343+00 (SOLID LT & RT)
 DURABLE 4 INCH YELLOW LINE (SEE OPTION ITEMS)
 STA. 337+25 - STA. 343+00 (SOLID LT & RT)



END R.O.W. PROJECT
STP 0147 (20)
STA. 342+44.25 24.75' LT.

2

WITIK, ALEXANDER

LINE SHOWN ON THIS PLAN AS EXISTING PROPERTY LINES P/L ARE BELIEVED TO BE ACCURATE BUT SHOULD NOT BE RELIED UPON FOR PURPOSES UNRELATED TO THE STATE OF VERMONT'S ACQUISITION OF LAND AND RIGHTS FOR THIS PROJECT.

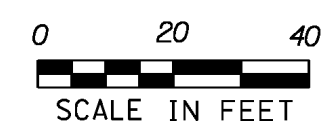
FOR R.O.W. USE ONLY

- ④ STA. 338+50.75 RT 21.2' TO STA. 338+50.75 LT 34.8' INSTALL NEW 18" CPEP (SL) LENGTH = 56'-0" INV. IN = 449.64' INV. OUT = 445.65' ASKEW ANGLE = 90.0° CONSTRUCT INLET PROTECTION PAD STONE FILL, TYPE I
- ⑤ STA. 341+51.13 RT 21' TO STA. 341+52.08 LT 29' REPLACE EXISTING 15" RCP WITH NEW 24" CPEP (SL) LENGTH = 50'-0" INV. IN = 447.89' INV. OUT = 442.96' ASKEW ANGLE = 83.9° LT CONSTRUCT INLET PROTECTION PAD STONE FILL, TYPE I

- BARRIER FENCE
 STA. 337+25.00 - STA. 342+42.00 RT
 STA. 342+71.00 - STA. 343+09.00 RT
- GEOTEXTILE FOR SILT FENCE, WOVEN WIRE REINFORCED
 STA. 337+25.00 - STA. 337+83.00 LT
 STA. 338+98.00 - STA. 340+60.00 LT
 STA. 343+10.00 - STA. 343+10.00 LT
- INLET PROTECTION DEVICE, TYPE I
 STA. 338+51.00 RT
 STA. 341+51.00 RT
- TEMPORARY STONE CHECK DAM, TYPE I
 STA. 337+25.00 - 338+30.00 RT
 STA. 338+65.00 - 341+36.00 RT
 STA. 341+75.00 - 342+36.00 RT
- VEHICLE TRACKING PAD
 STA. 342+94.00 LT

CURVE (4)
 DELTA = 6°56'21"
 D = 2°09'44"
 R = 2650.00'
 T = 160.67'
 L = 320.95'
 E = 4.87'
 BANKING = 0.041 FT/FT AT 50 MPH

CURVE (3)
 DELTA = 7°16'10"
 D = 2°36'16"
 R = 2200.00'
 T = 139.75'
 L = 279.12'
 E = 4.43'
 BANKING = 0.048 FT/FT AT 50 MPH



PROJECT NAME: SHARON	PLOT DATE: 10-SEP-2014
PROJECT NUMBER: STP 0147 (20)	DRAWN BY: B. MACK
FILE NAME: z12c410bdr.dgn	CHECKED BY: J. TUCKER
PROJECT LEADER: J. TUCKER	ROW SHEET 7 OF 17
DESIGNED BY: B. MACK	
ROW LAYOUT SHEET 4	