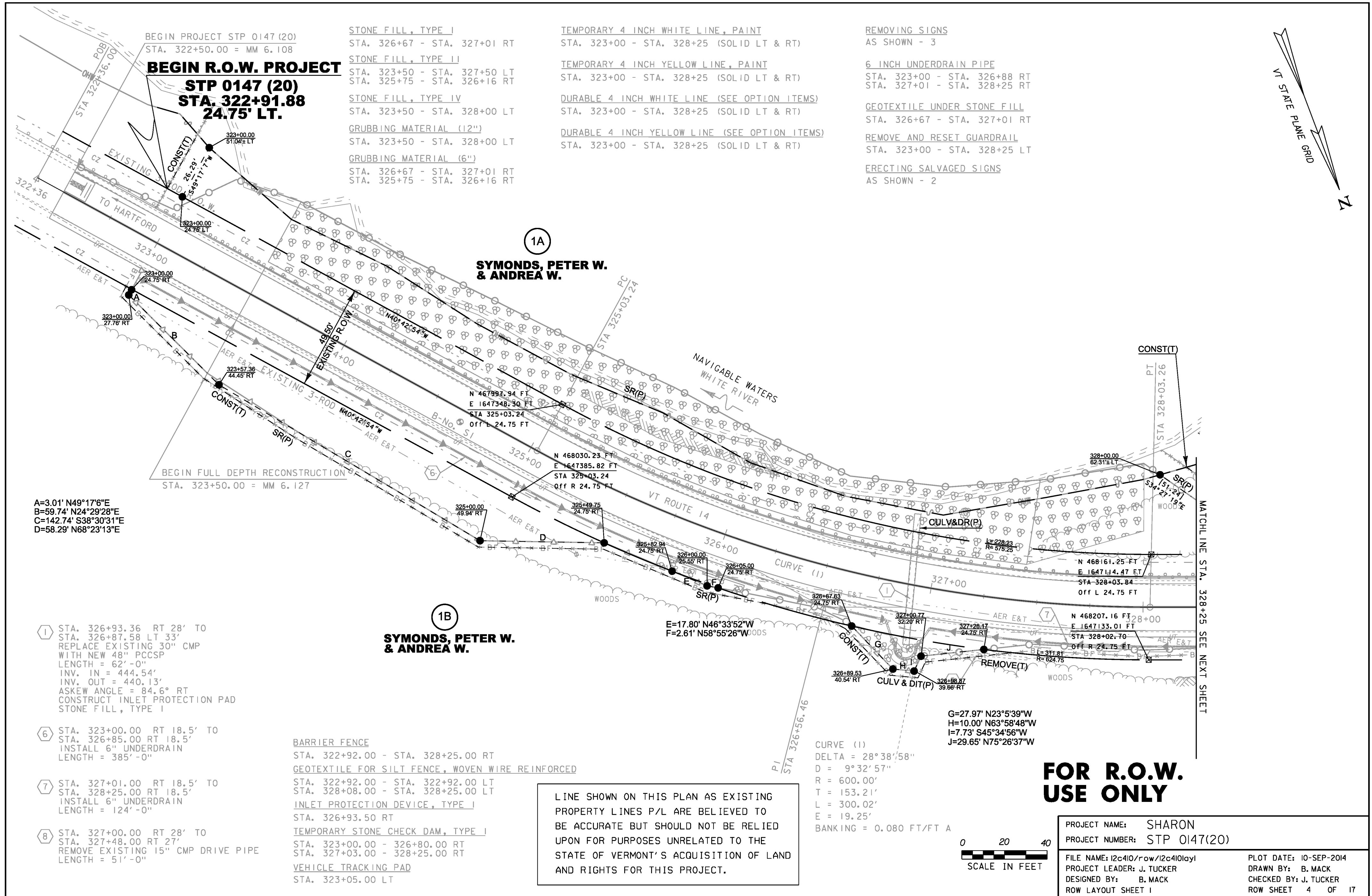


Original Drawing — Ink on Polymer meeting the requirements of 27 V.S.A. § 1403

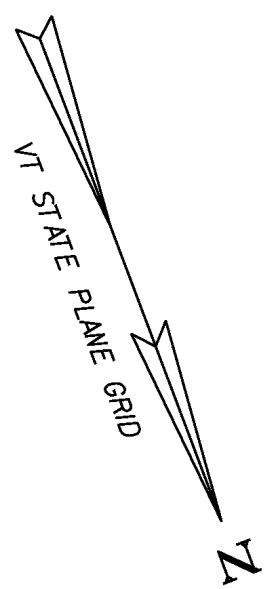


BEGIN PROJECT STP 0147 (20)  
 STA. 322+50.00 = MM 6.108  
**BEGIN R.O.W. PROJECT**  
**STP 0147 (20)**  
**STA. 322+91.88**  
**24.75' LT.**

- STONE FILL, TYPE I  
 STA. 326+67 - STA. 327+01 RT
- STONE FILL, TYPE II  
 STA. 323+50 - STA. 327+50 LT  
 STA. 325+75 - STA. 326+16 RT
- STONE FILL, TYPE IV  
 STA. 323+50 - STA. 328+00 LT
- GRUBBING MATERIAL (12")  
 STA. 323+50 - STA. 328+00 LT
- GRUBBING MATERIAL (6")  
 STA. 326+67 - STA. 327+01 RT  
 STA. 325+75 - STA. 326+16 RT

- TEMPORARY 4 INCH WHITE LINE, PAINT  
 STA. 323+00 - STA. 328+25 (SOLID LT & RT)
- TEMPORARY 4 INCH YELLOW LINE, PAINT  
 STA. 323+00 - STA. 328+25 (SOLID LT & RT)
- DURABLE 4 INCH WHITE LINE (SEE OPTION ITEMS)  
 STA. 323+00 - STA. 328+25 (SOLID LT & RT)
- DURABLE 4 INCH YELLOW LINE (SEE OPTION ITEMS)  
 STA. 323+00 - STA. 328+25 (SOLID LT & RT)

- REMOVING SIGNS  
 AS SHOWN - 3
- 6 INCH UNDERDRAIN PIPE  
 STA. 323+00 - STA. 326+88 RT  
 STA. 327+01 - STA. 328+25 RT
- GEOTEXTILE UNDER STONE FILL  
 STA. 326+67 - STA. 327+01 RT
- REMOVE AND RESET GUARDRAIL  
 STA. 323+00 - STA. 328+25 LT
- ERECTING SALVAGED SIGNS  
 AS SHOWN - 2



**1A**  
**SYMONDS, PETER W.**  
**& ANDREA W.**

**1B**  
**SYMONDS, PETER W.**  
**& ANDREA W.**

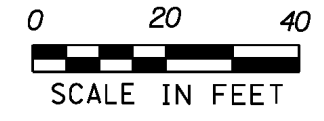
A=3.01' N49°17'6"E  
 B=59.74' N24°29'28"E  
 C=142.74' S38°30'31"E  
 D=58.29' N68°23'13"E

- 1 STA. 326+93.36 RT 28' TO  
 STA. 326+87.58 LT 33'  
 REPLACE EXISTING 30" CMP  
 WITH NEW 48" PCCSP  
 LENGTH = 62'-0"  
 INV. IN = 444.54'  
 INV. OUT = 440.13'  
 ASKEW ANGLE = 84.6° RT  
 CONSTRUCT INLET PROTECTION PAD  
 STONE FILL, TYPE I
- 6 STA. 323+00.00 RT 18.5' TO  
 STA. 326+85.00 RT 18.5'  
 INSTALL 6" UNDERDRAIN  
 LENGTH = 385'-0"
- 7 STA. 327+01.00 RT 18.5' TO  
 STA. 328+25.00 RT 18.5'  
 INSTALL 6" UNDERDRAIN  
 LENGTH = 124'-0"
- 8 STA. 327+00.00 RT 28' TO  
 STA. 327+48.00 RT 27'  
 REMOVE EXISTING 15" CMP DRIVE PIPE  
 LENGTH = 51'-0"

- BARRIER FENCE  
 STA. 322+92.00 - STA. 328+25.00 RT
- GEOTEXTILE FOR SILT FENCE, WOVEN WIRE REINFORCED  
 STA. 322+92.00 - STA. 322+92.00 LT  
 STA. 328+08.00 - STA. 328+25.00 LT
- INLET PROTECTION DEVICE, TYPE I  
 STA. 326+93.50 RT
- TEMPORARY STONE CHECK DAM, TYPE I  
 STA. 323+00.00 - 326+80.00 RT  
 STA. 327+03.00 - 328+25.00 RT
- VEHICLE TRACKING PAD  
 STA. 323+05.00 LT

LINE SHOWN ON THIS PLAN AS EXISTING  
 PROPERTY LINES P/L ARE BELIEVED TO  
 BE ACCURATE BUT SHOULD NOT BE RELIED  
 UPON FOR PURPOSES UNRELATED TO THE  
 STATE OF VERMONT'S ACQUISITION OF LAND  
 AND RIGHTS FOR THIS PROJECT.

CURVE (1)  
 DELTA = 28°38'58"  
 D = 9°32'57"  
 R = 600.00'  
 T = 153.21'  
 L = 300.02'  
 E = 19.25'  
 BANKING = 0.080 FT/FT A



**FOR R.O.W.  
 USE ONLY**

PROJECT NAME: SHARON	PLOT DATE: 10-SEP-2014
PROJECT NUMBER: STP 0147(20)	DRAWN BY: B. MACK
FILE NAME: I2c410/row/I2c410lay1	CHECKED BY: J. TUCKER
PROJECT LEADER: J. TUCKER	ROW SHEET 4 OF 17
DESIGNED BY: B. MACK	
ROW LAYOUT SHEET I	