

THREE CABLE GUARD RAIL w/ STEEL POSTS
 397+70-403+00
 397+70-403+00
 Removal & Disposal of Present Guard Rail
 398+00-398+30 RT
 399+00-403+00 RT
 PLANK GUARD RAIL w/PRESERVATIVE TREATMENT
 399+27

Construct Approach
 398+00 RT
 #1A NICHOLAS & ELEANOR LEMTUGOV
 (A 0.02) STA 396+00-398+68
 W.D.O.E. 12/16/58
 RECORDED: MANCHESTER - BK 52 - PG 286 - 12/19/58

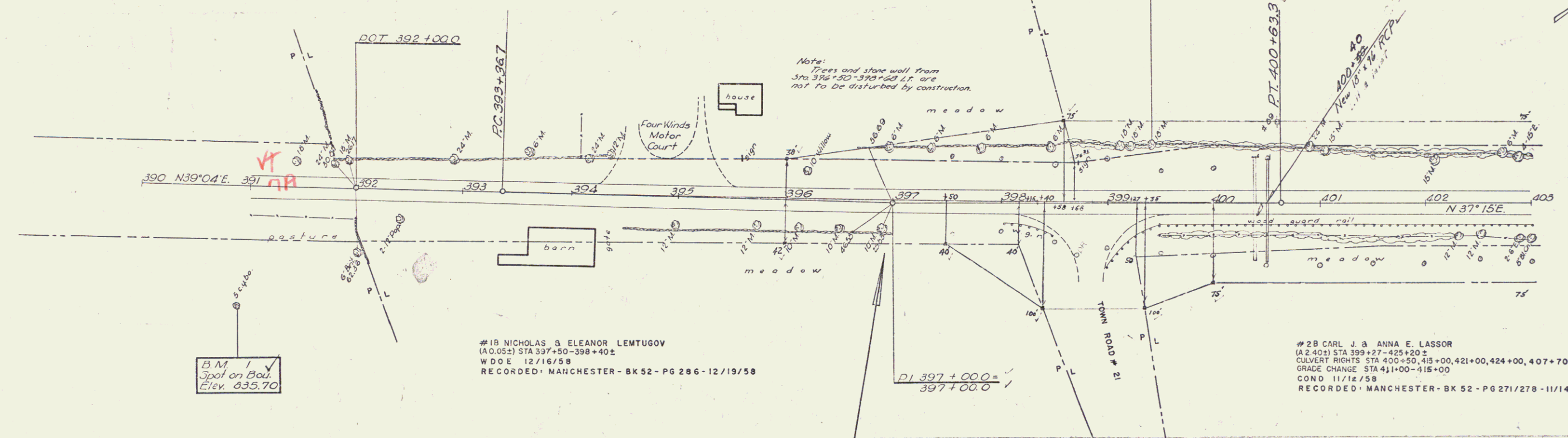
PRESENT ROW PURCHASED FROM H.P. WAY BY
 W.D.O.E. 6-23-41 BK 41 PG 206 MANCHESTER L.R.
 APR SUR. STA 391+76-399+71 E

PRESENT ROW ESTABLISHED BY F.A.P. 92 C (I) 1942
 SUR. STA 391+00-409+50 LT & RT.

Δ 1° 49' L.V.
 D 0° 15'
 R 22918.3'
 T 363.3'
 L 726.6'
 E 29'
 Do not Bank

#2A CARL J. & ANNA E. LASSOR
 (A 100) STA 398+58-419+92
 COND. 11/12/58
 RECORDED: MANCHESTER - BK 52 - PG 271/278 - 11/14/58

0.07
 14-57
 PLANK
 14-58



B.M. #1
 Spot on Boulder
 Elev. 835.70

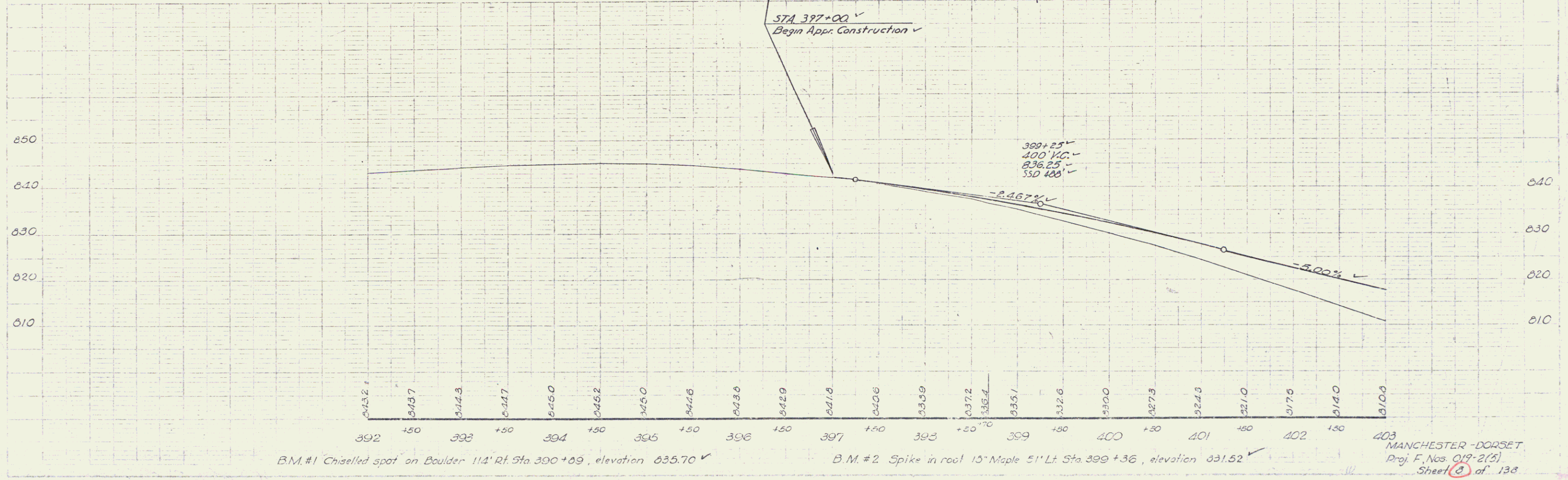
#1B NICHOLAS & ELEANOR LEMTUGOV
 (A 0.02) STA 397+50-398+40
 W.D.O.E. 12/16/58
 RECORDED: MANCHESTER - BK 52 - PG 286 - 12/19/58

PI 397+00.0 =
 397+00.0

#2B CARL J. & ANNA E. LASSOR
 (A 2.00) STA 399+27-425+20
 CULVERT RIGHTS STA 400+50, 415+00, 421+00, 424+00, 407+70
 GRADE CHANGE STA 411+00-415+00
 COND. 11/12/58
 RECORDED: MANCHESTER - BK 52 - PG 271/278 - 11/14/58

STA 397+00
 Begin Appr. Construction

0.07
 14-57
 PLANK
 14-58



B.M. #1 Chiselled spot on Boulder 114' Rt. Sta. 390+09, elevation 835.70

B.M. #2 Spike in root 15' Maple 51' Lt. Sta. 399+36, elevation 831.52

MANCHESTER - DORSET
 Proj. F. Nos. 019-2(3)
 Sheet 2 of 138

Removal & Dispose of Present Guard Rail
 LT 403+00 - 403+15
 RT 403+00 - 403+30
 403+30 - 403+83

PRESENT R.O.W. PURCHASED FROM C. J. LASSOR BY
 W.D.E. 8/25/41 - BK 41 - PG 207 MANCHESTER
 APP. SUR STA 398+71 - 409+80

B.M. # 3
 Spot on headwall
 Elev. 790.56

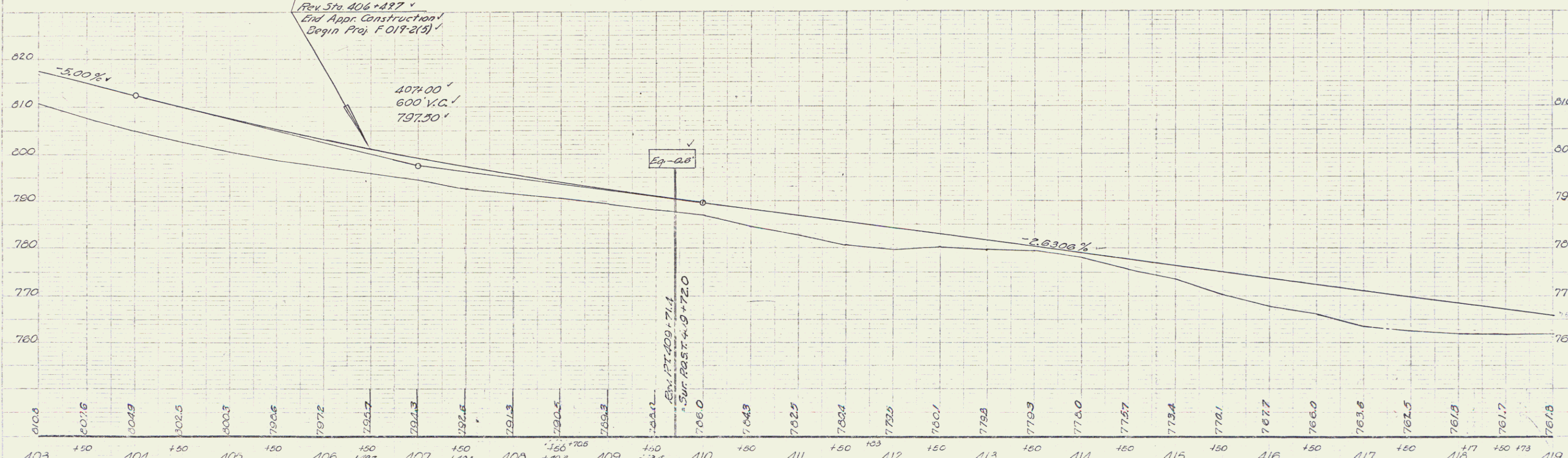
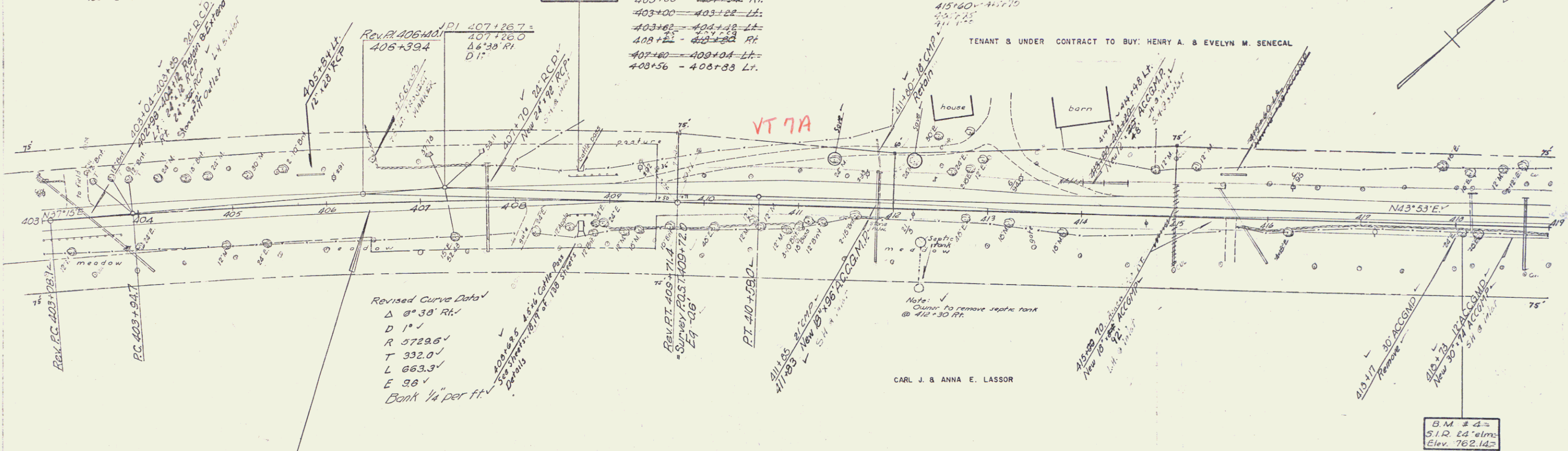
Three Cable Guard Rail with Steel Posts Item 543
 403+00 - 403+83 Rt.
 403+00 - 403+22 Lt.
 403+22 - 403+42 Lt.
 403+42 - 403+83 Rt.
 407+80 - 409+04 Lt.
 409+04 - 409+83 Lt.

Construct Drives
 Lt RT
 403+40 - 403+40 V
 404+00 - 403+42
 405+00 - 403+70
 405+75
 411+25

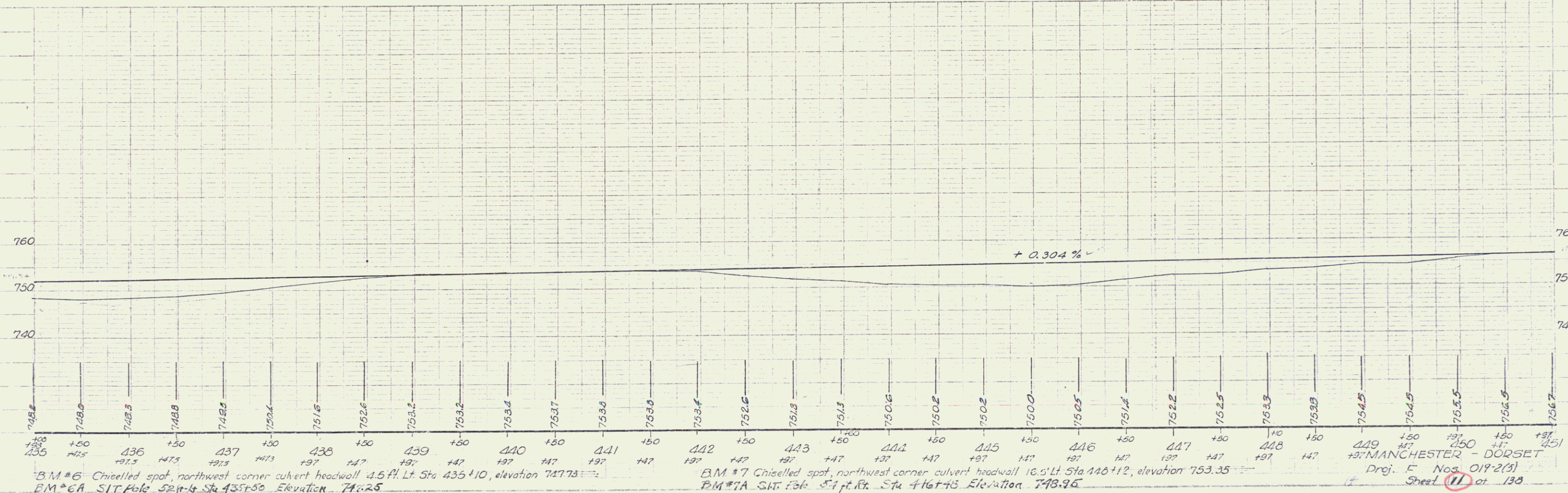
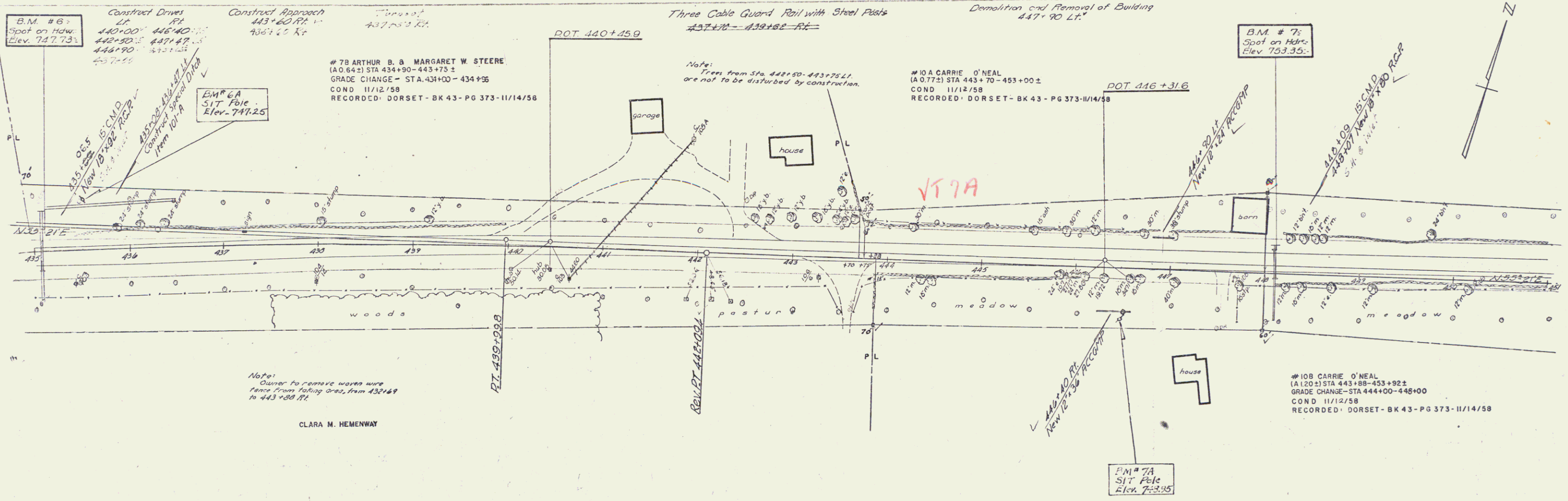
CARL J. & ANNA E. LASSOR

PLANK GUARD RAIL W/ PRESATIVE TREATMENT
 413+30 - 413+70 LT.

TENANT & UNDER CONTRACT TO BUY: HENRY A. & EVELYN M. SENEAL



B.M. # 3 Chiselled spot on west headwall cattle pass 24' left sta. 406+85, elevation 790.56
 B.M. # 4 Spike in root 24' elm, 18.5 ft. Rt. Sta. 416+00, elevation 762.14
 MANCHESTER - DORSET
 Proj. E. Nos. 019-2(1)
 Sheet 9 of 132



B.M. #6 Chiselled spot, northwest corner culvert headwall 4.5 ft. Lt. Sta 435+10, elevation 747.73
 B.M. #7 Chiselled spot, northwest corner culvert headwall 16.5 ft. Lt. Sta 446+12, elevation 753.35
 B.M. #7A Chiselled spot, northwest corner culvert headwall 16.5 ft. Lt. Sta 446+12, elevation 748.96

0.57
 10.57
 12.57
 14.57
 16.57
 18.57
 20.57
 22.57
 24.57
 26.57
 28.57
 30.57
 32.57
 34.57
 36.57
 38.57
 40.57
 42.57
 44.57
 46.57
 48.57
 50.57
 52.57
 54.57
 56.57
 58.57
 60.57
 62.57
 64.57
 66.57
 68.57
 70.57
 72.57
 74.57
 76.57
 78.57
 80.57
 82.57
 84.57
 86.57
 88.57
 90.57
 92.57
 94.57
 96.57
 98.57
 100.57

Remove & Disposal of Present Guard Rail
 451+45 - 457+55 LT
 458+20 - 459+00 LT
 463+45 - 464+00 LT-RT
 463+30 - 464+90 LT

Construct Drives
 LT RT
 454+50 - 463+00

B.M. # 8
 Spot on Hdr.
 Elev. 753.48

Three Cable Guard Rail with Steel Posts Item 543
 455+33 - 465+25 RT
 458+33 - 464+25 LT
 465+27 - 467+21 RT & LT

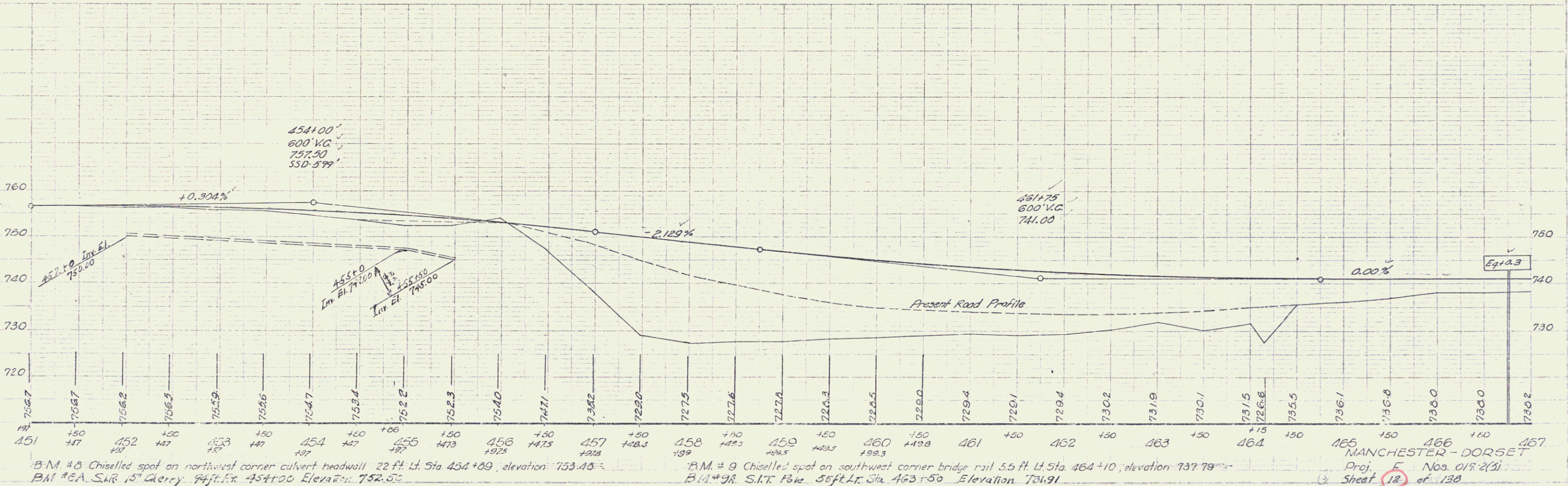
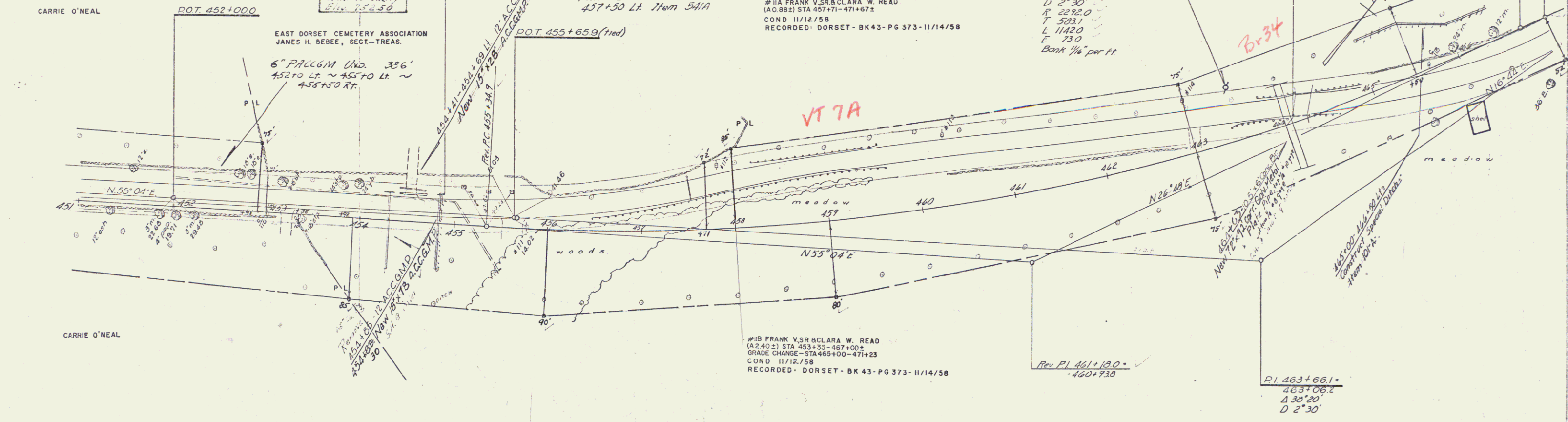
Plank Guard Rail for Barricade
 457+50 LT Item 544

#11A FRANK V. SR. CLARA W. READ
 (A.C. 882) STA 457+71 - 471+67.2
 COND. 11/12/58
 RECORDED: DORSET - BK 43 - PG 373 - 11/14/58

Revised Curve Data
 Δ 20° 33' LT
 D 2° 30'
 R 2282.0
 T 523.1
 L 1142.0
 E 73.0
 Bank 1/4" per ft.

B.M. # 9
 Spot on Br. rail
 Elev. 737.79

POT 467+00



B.M. # 8 Chiselled spot on northwest corner culvert headwall 22 ft. Lt. Sta 454+09, elevation 753.48.
 B.M. # 8A S.R. 15 Cherry 84 ft. Rt. 454+00 Elevation 752.55

B.M. # 9 Chiselled spot on southwest corner bridge rail 5.5 ft. Lt. Sta 464+10, elevation 737.79
 B.M. # 9R S.R. 15 Cherry 36 ft. Lt. Sta 463+50 Elevation 731.91

MANCHESTER - DORSET
 Proj. E Nos. 018-2(3)
 Sheet 12 of 138

0-57
 10-37
 12-57
 1-58
 2-58
 3-58
 4-58
 5-58
 6-58
 7-58
 8-58
 9-58
 10-58
 11-58
 12-58
 1-59
 2-59
 3-59
 4-59
 5-59
 6-59
 7-59
 8-59
 9-59
 10-59
 11-59
 12-59
 1-60
 2-60
 3-60
 4-60
 5-60
 6-60
 7-60
 8-60
 9-60
 10-60
 11-60
 12-60
 1-61
 2-61
 3-61
 4-61
 5-61
 6-61
 7-61
 8-61
 9-61
 10-61
 11-61
 12-61
 1-62
 2-62
 3-62
 4-62
 5-62
 6-62
 7-62
 8-62
 9-62
 10-62
 11-62
 12-62
 1-63
 2-63
 3-63
 4-63
 5-63
 6-63
 7-63
 8-63
 9-63
 10-63
 11-63
 12-63
 1-64
 2-64
 3-64
 4-64
 5-64
 6-64
 7-64
 8-64
 9-64
 10-64
 11-64
 12-64
 1-65
 2-65
 3-65
 4-65
 5-65
 6-65
 7-65
 8-65
 9-65
 10-65
 11-65
 12-65
 1-66
 2-66
 3-66
 4-66
 5-66
 6-66
 7-66
 8-66
 9-66
 10-66
 11-66
 12-66
 1-67
 2-67
 3-67
 4-67
 5-67
 6-67
 7-67
 8-67
 9-67
 10-67
 11-67
 12-67
 1-68
 2-68
 3-68
 4-68
 5-68
 6-68
 7-68
 8-68
 9-68
 10-68
 11-68
 12-68
 1-69
 2-69
 3-69
 4-69
 5-69
 6-69
 7-69
 8-69
 9-69
 10-69
 11-69
 12-69
 1-70
 2-70
 3-70
 4-70
 5-70
 6-70
 7-70
 8-70
 9-70
 10-70
 11-70
 12-70
 1-71
 2-71
 3-71
 4-71
 5-71
 6-71
 7-71
 8-71
 9-71
 10-71
 11-71
 12-71
 1-72
 2-72
 3-72
 4-72
 5-72
 6-72
 7-72
 8-72
 9-72
 10-72
 11-72
 12-72
 1-73
 2-73
 3-73
 4-73
 5-73
 6-73
 7-73
 8-73
 9-73
 10-73
 11-73
 12-73
 1-74
 2-74
 3-74
 4-74
 5-74
 6-74
 7-74
 8-74
 9-74
 10-74
 11-74
 12-74
 1-75
 2-75
 3-75
 4-75
 5-75
 6-75
 7-75
 8-75
 9-75
 10-75
 11-75
 12-75
 1-76
 2-76
 3-76
 4-76
 5-76
 6-76
 7-76
 8-76
 9-76
 10-76
 11-76
 12-76
 1-77
 2-77
 3-77
 4-77
 5-77
 6-77
 7-77
 8-77
 9-77
 10-77
 11-77
 12-77
 1-78
 2-78
 3-78
 4-78
 5-78
 6-78
 7-78
 8-78
 9-78
 10-78
 11-78
 12-78
 1-79
 2-79
 3-79
 4-79
 5-79
 6-79
 7-79
 8-79
 9-79
 10-79
 11-79
 12-79
 1-80
 2-80
 3-80
 4-80
 5-80
 6-80
 7-80
 8-80
 9-80
 10-80
 11-80
 12-80
 1-81
 2-81
 3-81
 4-81
 5-81
 6-81
 7-81
 8-81
 9-81
 10-81
 11-81
 12-81
 1-82
 2-82
 3-82
 4-82
 5-82
 6-82
 7-82
 8-82
 9-82
 10-82
 11-82
 12-82
 1-83
 2-83
 3-83
 4-83
 5-83
 6-83
 7-83
 8-83
 9-83
 10-83
 11-83
 12-83
 1-84
 2-84
 3-84
 4-84
 5-84
 6-84
 7-84
 8-84
 9-84
 10-84
 11-84
 12-84
 1-85
 2-85
 3-85
 4-85
 5-85
 6-85
 7-85
 8-85
 9-85
 10-85
 11-85
 12-85
 1-86
 2-86
 3-86
 4-86
 5-86
 6-86
 7-86
 8-86
 9-86
 10-86
 11-86
 12-86
 1-87
 2-87
 3-87
 4-87
 5-87
 6-87
 7-87
 8-87
 9-87
 10-87
 11-87
 12-87
 1-88
 2-88
 3-88
 4-88
 5-88
 6-88
 7-88
 8-88
 9-88
 10-88
 11-88
 12-88
 1-89
 2-89
 3-89
 4-89
 5-89
 6-89
 7-89
 8-89
 9-89
 10-89
 11-89
 12-89
 1-90
 2-90
 3-90
 4-90
 5-90
 6-90
 7-90
 8-90
 9-90
 10-90
 11-90
 12-90
 1-91
 2-91
 3-91
 4-91
 5-91
 6-91
 7-91
 8-91
 9-91
 10-91
 11-91
 12-91
 1-92
 2-92
 3-92
 4-92
 5-92
 6-92
 7-92
 8-92
 9-92
 10-92
 11-92
 12-92
 1-93
 2-93
 3-93
 4-93
 5-93
 6-93
 7-93
 8-93
 9-93
 10-93
 11-93
 12-93
 1-94
 2-94
 3-94
 4-94
 5-94
 6-94
 7-94
 8-94
 9-94
 10-94
 11-94
 12-94
 1-95
 2-95
 3-95
 4-95
 5-95
 6-95
 7-95
 8-95
 9-95
 10-95
 11-95
 12-95
 1-96
 2-96
 3-96
 4-96
 5-96
 6-96
 7-96
 8-96
 9-96
 10-96
 11-96
 12-96
 1-97
 2-97
 3-97
 4-97
 5-97
 6-97
 7-97
 8-97
 9-97
 10-97
 11-97
 12-97
 1-98
 2-98
 3-98
 4-98
 5-98
 6-98
 7-98
 8-98
 9-98
 10-98
 11-98
 12-98
 1-99
 2-99
 3-99
 4-99
 5-99
 6-99
 7-99
 8-99
 9-99
 10-99
 11-99
 12-99
 1-100
 2-100
 3-100
 4-100
 5-100
 6-100
 7-100
 8-100
 9-100
 10-100
 11-100
 12-100

Excavation + Removal of Road Surface on Discontinued Roadways Item 118 472+00 ~ 481+00 Lt.

Construct Approach 482+13.5 Lt.

Construct Drives Lt Rt 482+50 ~ 487+50 488+22 ~ 491+22

Plank Guard Rail for Barricade 472+26 Lt. Item 541A 481+60

Three Cable Guard Rail with Steel Posts Item 543 482+10 ~ 470+70 Rt

Demolition and Removal of Building 467+25 Lt.

FRANK V. SR. OCLARA W. ROAD

Sta. 471+30.0 Stop Roadway - Begin Bridge

Sta. 471+94.0 End Bridge - Resume Roadway

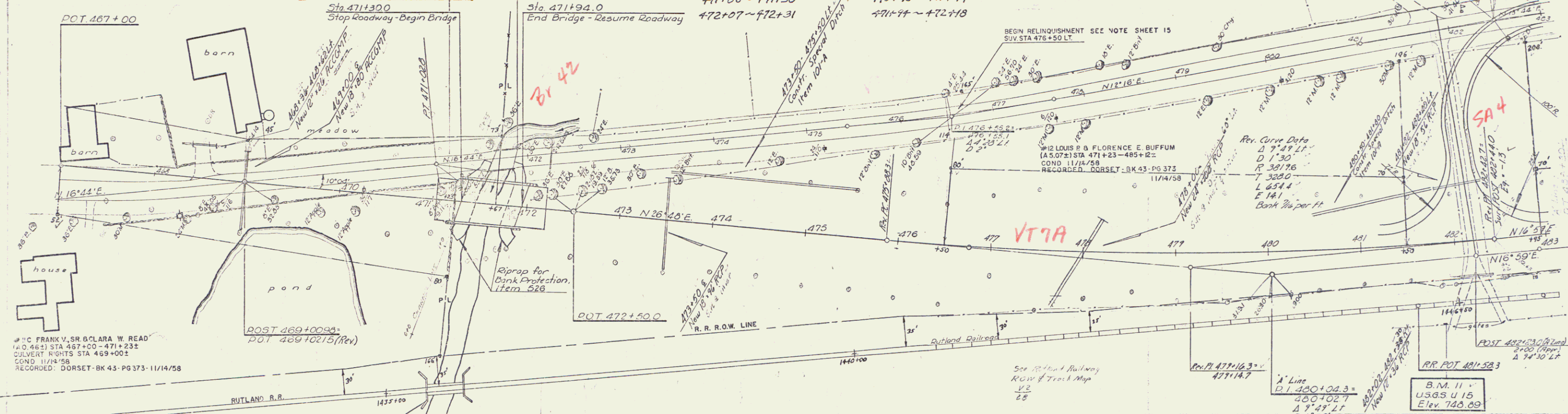
471+06 ~ 471+30 Lt.

470+83 ~ 471+17 Rt.

471+94 ~ 472+18

LOUIS R. BUFFUM

BEGIN RELINQUISHMENT SEE NOTE SHEET 15 SUBV. STA 476+50 LT.



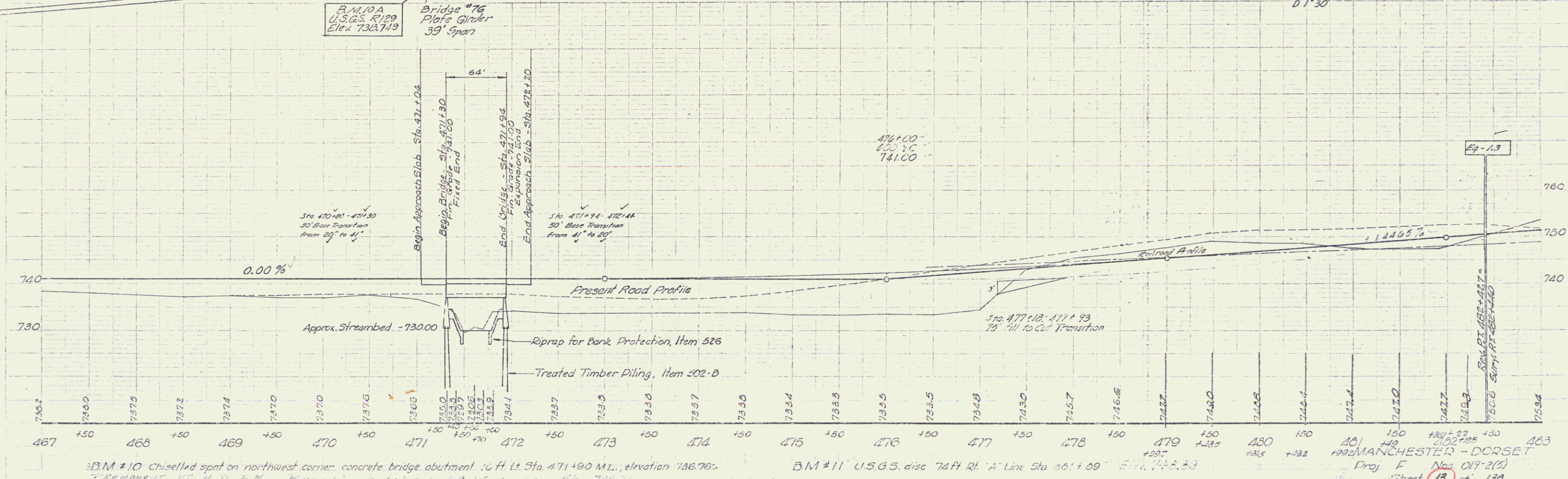
FRANK V. SR. OCLARA W. ROAD (A.D. 461) STA 467+00 ~ 471+232 CULVERT RIGHTS STA 469+002 COND. 11/18/58 RECORDED: DORSET - BK 43 - PG 373 - 11/14/58

POST 469+003 POT 469+0215 (Rev)

POT 472+50.0

Rev. Curve Data
D 9' 49" Lt.
D 1' 30"
R 391'76"
T 388.0
L 454.4
E 14.1
Bank 24 per Ft.

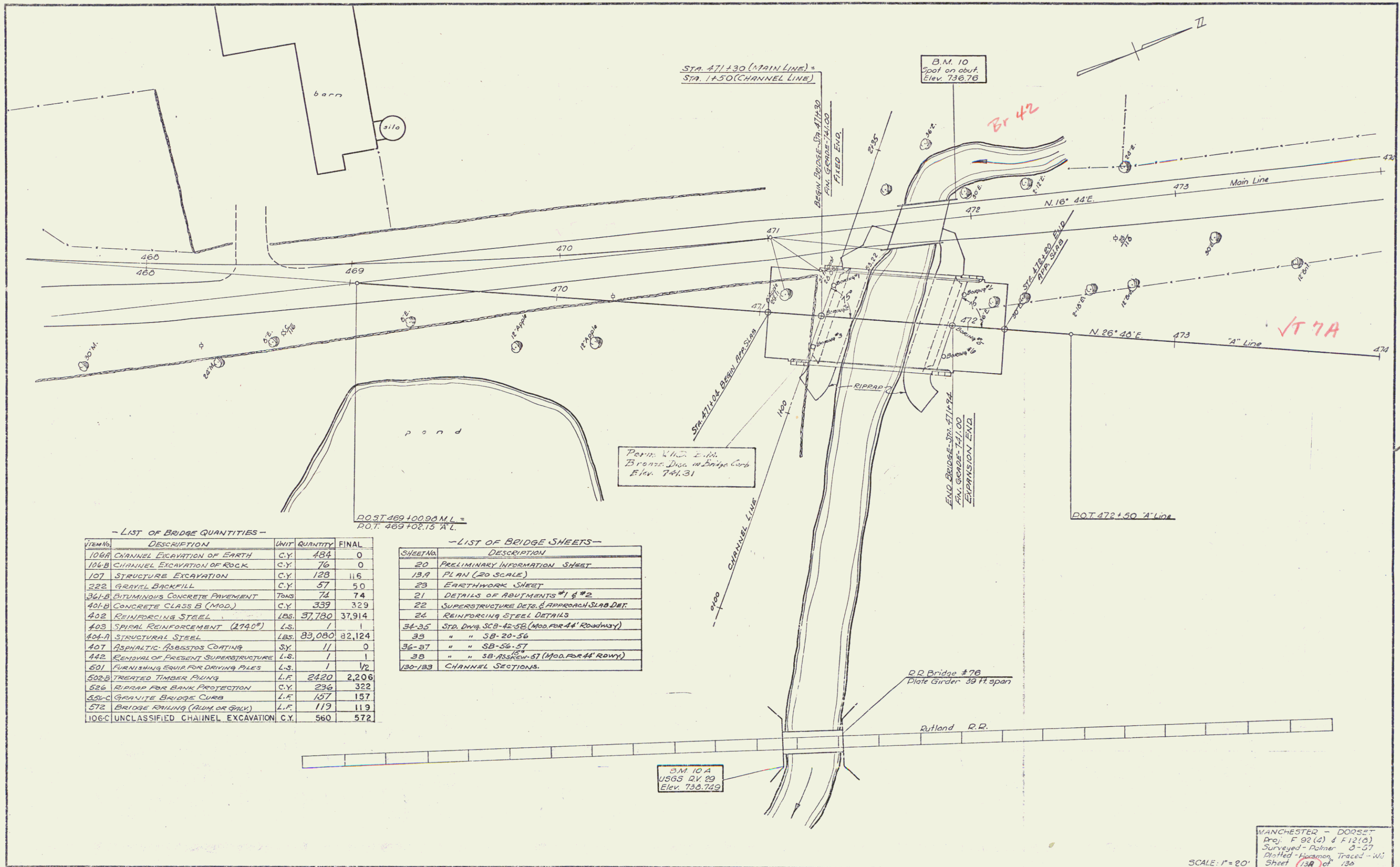
B.M. 11 U.S.G.S. disc 74 ft Rt. 'A' Line Sta 481+09 Elev 742.33



B.M. #10 Chiselled spot on northwest corner concrete bridge abutment. 10 ft Lt. Sta 471+90 M.L. elevation 736.765

B.M. #11 U.S.G.S. disc 74 ft Rt. 'A' Line Sta 481+09 Elev 742.33

MANCHESTER - DORSET Proj. F No. 019-2(5) Sheet 13 of 130



- LIST OF BRIDGE QUANTITIES -

ITEMS	DESCRIPTION	UNIT	QUANTITY	FINAL
106A	CHANNEL EXCAVATION OF EARTH	C.Y.	434	0
106B	CHANNEL EXCAVATION OF ROCK	C.Y.	76	0
107	STRUCTURE EXCAVATION	C.Y.	128	116
322	GRAVEL BACKFILL	C.Y.	57	50
361-B	BITUMINOUS CONCRETE PAVEMENT	TONS	74	74
401-B	CONCRETE CLASS B (MOD.)	C.Y.	339	329
402	REINFORCING STEEL	LBS.	37,780	37,914
403	SPIRAL REINFORCEMENT (274°)	LBS.	1	1
404-A	STRUCTURAL STEEL	LBS.	83,080	82,124
407	ASPHALTIC ASBESTOS COATING	SQ.	11	0
442	REMOVAL OF EXISTENT SUPERSTRUCTURE	L.S.	1	1
501	FURNISHING EQUIP FOR DRIVING PILES	L.S.	1	1/2
502-B	TREATED TIMBER PILING	L.F.	2420	2,206
526	RIPRAP FOR BANK PROTECTION	C.Y.	236	322
528-C	GRANITE BRIDGE CURB	L.F.	157	157
572	BRIDGE RAILING (RAIL OR BALU)	L.F.	119	119
106-C	UNCLASSIFIED CHANNEL EXCAVATION	C.Y.	560	572

- LIST OF BRIDGE SHEETS -

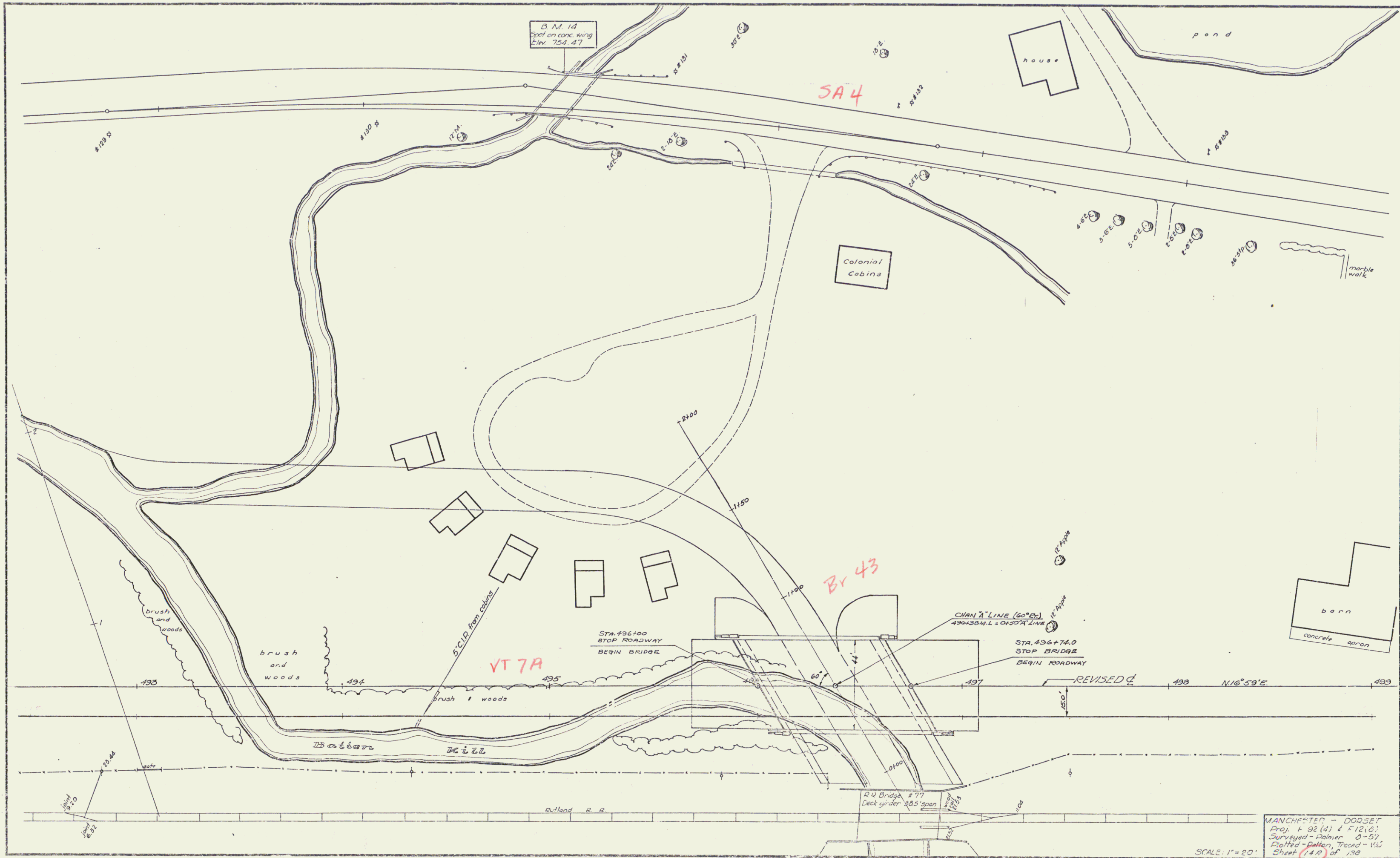
SHEET No.	DESCRIPTION
20	PRELIMINARY INFORMATION SHEET
19-A	PLAN (20 SCALE)
23	EARTHWORK SHEET
21	DETAILS OF ABUTMENTS #1 & #2
22	SUPERSTRUCTURE DETS. & APPROACH SLAB DET.
24	REINFORCING STEEL DETAILS
36-35	STR. DWG. SCB-42-5B (MOD. FOR 44' ROADWAY)
39	" " SB-20-54
36-37	" " SB-56-57
38	" " SB-ASS-57 (MOD. FOR 44' ROADWAY)
130-133	CHANNEL SECTIONS.

DOT 469+00.90 A.L. =
D.O.T. 469+02.15 'A' L.

Perms. W.D. 2-10.
Bronze Disc. in Stone Corp.
Elev. 741.31

MANCHESTER - DORSET
Proj. F 92 (2) & F 12 (2)
Surveyed - Palmer 3-37
Drafted - Harmon, Traced - WJ
Sheet 13A of 136

SCALE: 1" = 20'



B.M. 14
Spot on conc. wing
Elev. 753.47

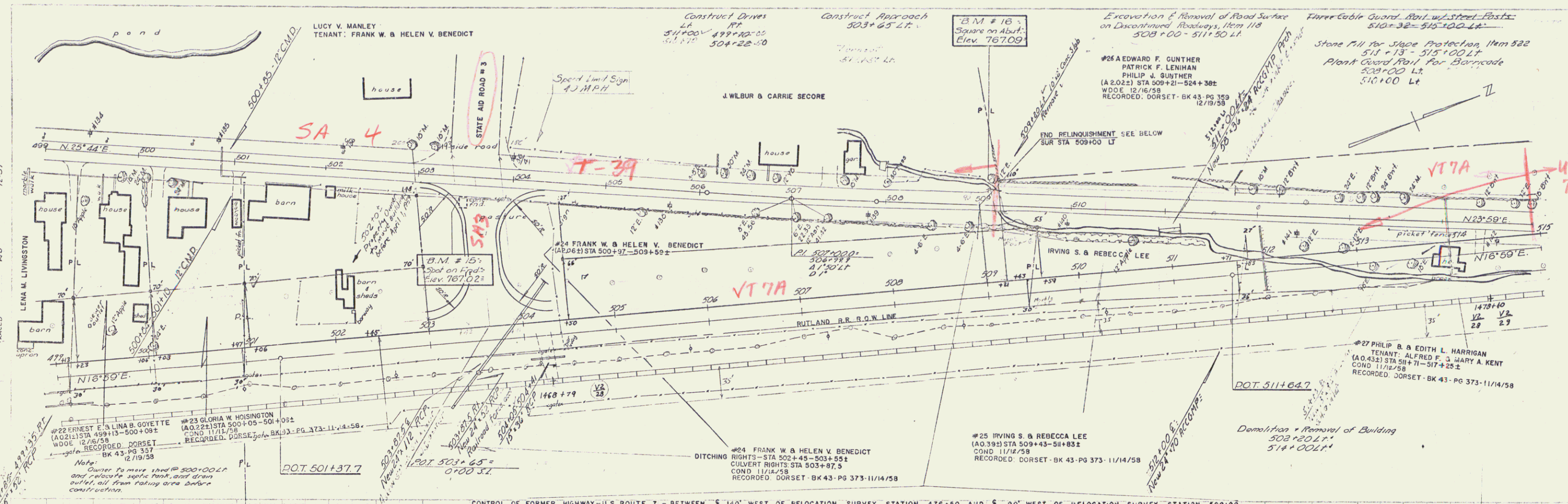
SA 4

Br 43

VT 7A

MANCHESTER - DORSET
Proj. 4 92 (4) 4 172 (2)
Surveyed - Palmer 5-57
Plotted - Dalton, Traced - V.L.
Sheet 14A of 138

SCALE: 1"=20'



CONTROL OF FORMER HIGHWAY-U.S. ROUTE 7 - BETWEEN $\pm 140'$ WEST OF RELOCATION SURVEY STATION 476+50 AND $\pm 90'$ WEST OF RELOCATION SURVEY STATION 509+00 IS RELINQUISHED TO THE TOWN OF DORSET. RECORDED IN BOOK 41 PAGE 174, DORSET LAND RECORD, DECEMBER 4, 1959.

