

Remove & Disposal of Present Guard Rail  
 451+45 - 457+55 LT  
 458+20 - 459+00 LT  
 463+45 - 464+00 LT-RT  
 463+30 - 464+90 LT

Construct Drives  
 LT RT  
 454+50 - 463+00

B.M. # 8  
 Spot on Hdr.  
 Elev. 753.48

Three Cable Guard Rail with Steel Posts Item 543  
 455+33 - 465+25 RT  
 458+33 - 464+25 LT  
 465+27 - 467+21 RT & LT

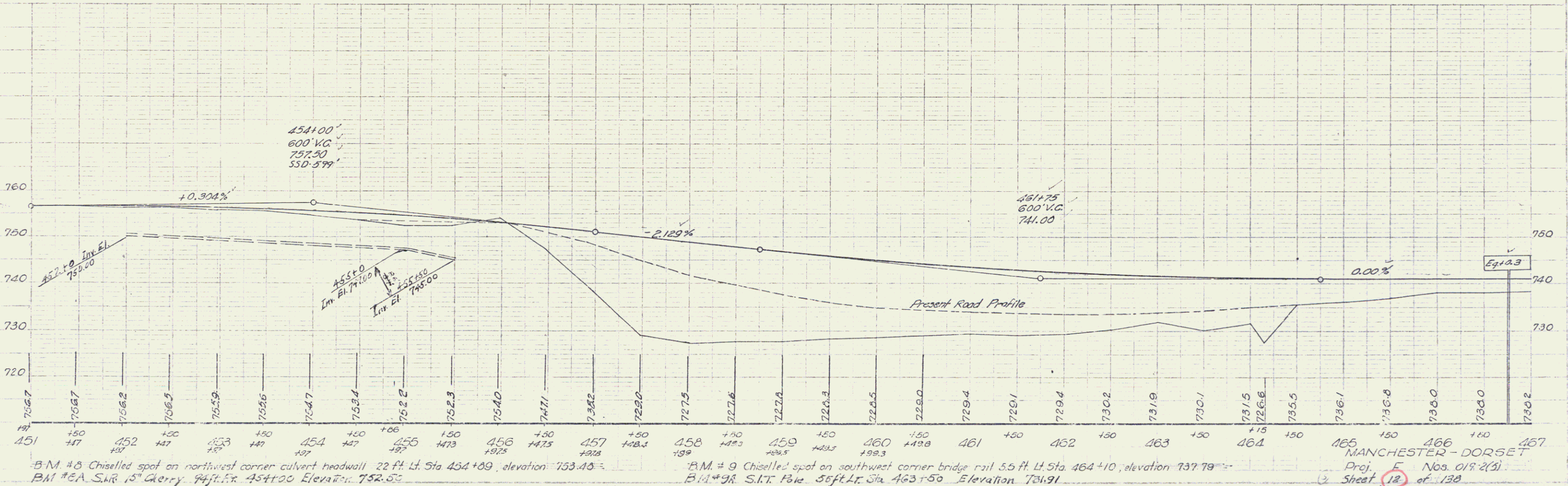
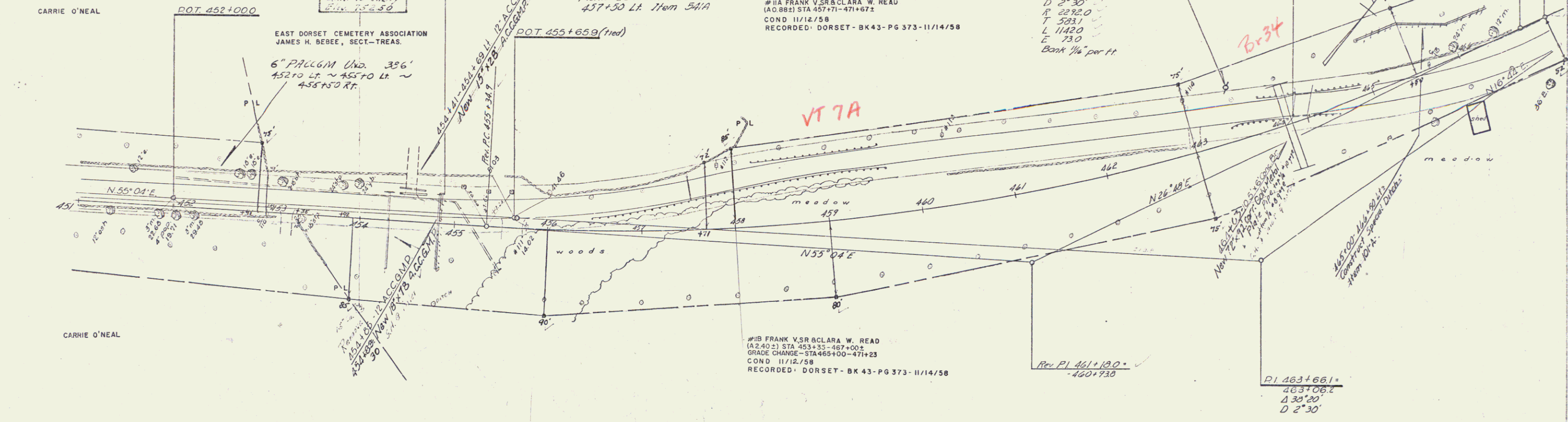
Plank Guard Rail for Barricade  
 457+50 LT Item 544

#11A FRANK V. SR. CLARA W. READ  
 (A.C. 882) STA 457+71 - 471+67.2  
 COND. 11/12/58  
 RECORDED: DORSET - BK 43 - PG 373 - 11/14/58

Revised Curve Data  
 Δ 20° 33' LT  
 D 2° 30'  
 R 2282.0  
 T 523.1  
 L 1142.0  
 E 73.0  
 Bank 1/4" per ft.

B.M. # 9  
 Spot on Br. rail  
 Elev. 737.79

POT 467+00



B.M. # 8 Chiselled spot on northwest corner culvert headwall 22 ft. Lt. Sta 454+09, elevation 753.48.  
 B.M. # 8A S.R. 15 Cherry 44 ft. Rt. 454+00 Elevation 752.55

B.M. # 9 Chiselled spot on southwest corner bridge rail 5.5 ft. Lt. Sta 464+10, elevation 737.79  
 B.M. # 9R S.R. 15 Cherry 36 ft. Lt. Sta 463+50 Elevation 731.91

MANCHESTER - DORSET  
 Proj. E Nos. 018-2(3)  
 Sheet 12 of 138

0-57  
 10-37  
 12-57  
 1-58  
 2-58  
 3-58  
 4-58  
 5-58  
 6-58  
 7-58  
 8-58  
 9-58  
 10-58  
 11-58  
 12-58  
 1-59  
 2-59  
 3-59  
 4-59  
 5-59  
 6-59  
 7-59  
 8-59  
 9-59  
 10-59  
 11-59  
 12-59  
 1-60  
 2-60  
 3-60  
 4-60  
 5-60  
 6-60  
 7-60  
 8-60  
 9-60  
 10-60  
 11-60  
 12-60  
 1-61  
 2-61  
 3-61  
 4-61  
 5-61  
 6-61  
 7-61  
 8-61  
 9-61  
 10-61  
 11-61  
 12-61  
 1-62  
 2-62  
 3-62  
 4-62  
 5-62  
 6-62  
 7-62  
 8-62  
 9-62  
 10-62  
 11-62  
 12-62  
 1-63  
 2-63  
 3-63  
 4-63  
 5-63  
 6-63  
 7-63  
 8-63  
 9-63  
 10-63  
 11-63  
 12-63  
 1-64  
 2-64  
 3-64  
 4-64  
 5-64  
 6-64  
 7-64  
 8-64  
 9-64  
 10-64  
 11-64  
 12-64  
 1-65  
 2-65  
 3-65  
 4-65  
 5-65  
 6-65  
 7-65  
 8-65  
 9-65  
 10-65  
 11-65  
 12-65  
 1-66  
 2-66  
 3-66  
 4-66  
 5-66  
 6-66  
 7-66  
 8-66  
 9-66  
 10-66  
 11-66  
 12-66  
 1-67  
 2-67  
 3-67  
 4-67  
 5-67  
 6-67  
 7-67  
 8-67  
 9-67  
 10-67  
 11-67  
 12-67  
 1-68  
 2-68  
 3-68  
 4-68  
 5-68  
 6-68  
 7-68  
 8-68  
 9-68  
 10-68  
 11-68  
 12-68  
 1-69  
 2-69  
 3-69  
 4-69  
 5-69  
 6-69  
 7-69  
 8-69  
 9-69  
 10-69  
 11-69  
 12-69  
 1-70  
 2-70  
 3-70  
 4-70  
 5-70  
 6-70  
 7-70  
 8-70  
 9-70  
 10-70  
 11-70  
 12-70  
 1-71  
 2-71  
 3-71  
 4-71  
 5-71  
 6-71  
 7-71  
 8-71  
 9-71  
 10-71  
 11-71  
 12-71  
 1-72  
 2-72  
 3-72  
 4-72  
 5-72  
 6-72  
 7-72  
 8-72  
 9-72  
 10-72  
 11-72  
 12-72  
 1-73  
 2-73  
 3-73  
 4-73  
 5-73  
 6-73  
 7-73  
 8-73  
 9-73  
 10-73  
 11-73  
 12-73  
 1-74  
 2-74  
 3-74  
 4-74  
 5-74  
 6-74  
 7-74  
 8-74  
 9-74  
 10-74  
 11-74  
 12-74  
 1-75  
 2-75  
 3-75  
 4-75  
 5-75  
 6-75  
 7-75  
 8-75  
 9-75  
 10-75  
 11-75  
 12-75  
 1-76  
 2-76  
 3-76  
 4-76  
 5-76  
 6-76  
 7-76  
 8-76  
 9-76  
 10-76  
 11-76  
 12-76  
 1-77  
 2-77  
 3-77  
 4-77  
 5-77  
 6-77  
 7-77  
 8-77  
 9-77  
 10-77  
 11-77  
 12-77  
 1-78  
 2-78  
 3-78  
 4-78  
 5-78  
 6-78  
 7-78  
 8-78  
 9-78  
 10-78  
 11-78  
 12-78  
 1-79  
 2-79  
 3-79  
 4-79  
 5-79  
 6-79  
 7-79  
 8-79  
 9-79  
 10-79  
 11-79  
 12-79  
 1-80  
 2-80  
 3-80  
 4-80  
 5-80  
 6-80  
 7-80  
 8-80  
 9-80  
 10-80  
 11-80  
 12-80  
 1-81  
 2-81  
 3-81  
 4-81  
 5-81  
 6-81  
 7-81  
 8-81  
 9-81  
 10-81  
 11-81  
 12-81  
 1-82  
 2-82  
 3-82  
 4-82  
 5-82  
 6-82  
 7-82  
 8-82  
 9-82  
 10-82  
 11-82  
 12-82  
 1-83  
 2-83  
 3-83  
 4-83  
 5-83  
 6-83  
 7-83  
 8-83  
 9-83  
 10-83  
 11-83  
 12-83  
 1-84  
 2-84  
 3-84  
 4-84  
 5-84  
 6-84  
 7-84  
 8-84  
 9-84  
 10-84  
 11-84  
 12-84  
 1-85  
 2-85  
 3-85  
 4-85  
 5-85  
 6-85  
 7-85  
 8-85  
 9-85  
 10-85  
 11-85  
 12-85  
 1-86  
 2-86  
 3-86  
 4-86  
 5-86  
 6-86  
 7-86  
 8-86  
 9-86  
 10-86  
 11-86  
 12-86  
 1-87  
 2-87  
 3-87  
 4-87  
 5-87  
 6-87  
 7-87  
 8-87  
 9-87  
 10-87  
 11-87  
 12-87  
 1-88  
 2-88  
 3-88  
 4-88  
 5-88  
 6-88  
 7-88  
 8-88  
 9-88  
 10-88  
 11-88  
 12-88  
 1-89  
 2-89  
 3-89  
 4-89  
 5-89  
 6-89  
 7-89  
 8-89  
 9-89  
 10-89  
 11-89  
 12-89  
 1-90  
 2-90  
 3-90  
 4-90  
 5-90  
 6-90  
 7-90  
 8-90  
 9-90  
 10-90  
 11-90  
 12-90  
 1-91  
 2-91  
 3-91  
 4-91  
 5-91  
 6-91  
 7-91  
 8-91  
 9-91  
 10-91  
 11-91  
 12-91  
 1-92  
 2-92  
 3-92  
 4-92  
 5-92  
 6-92  
 7-92  
 8-92  
 9-92  
 10-92  
 11-92  
 12-92  
 1-93  
 2-93  
 3-93  
 4-93  
 5-93  
 6-93  
 7-93  
 8-93  
 9-93  
 10-93  
 11-93  
 12-93  
 1-94  
 2-94  
 3-94  
 4-94  
 5-94  
 6-94  
 7-94  
 8-94  
 9-94  
 10-94  
 11-94  
 12-94  
 1-95  
 2-95  
 3-95  
 4-95  
 5-95  
 6-95  
 7-95  
 8-95  
 9-95  
 10-95  
 11-95  
 12-95  
 1-96  
 2-96  
 3-96  
 4-96  
 5-96  
 6-96  
 7-96  
 8-96  
 9-96  
 10-96  
 11-96  
 12-96  
 1-97  
 2-97  
 3-97  
 4-97  
 5-97  
 6-97  
 7-97  
 8-97  
 9-97  
 10-97  
 11-97  
 12-97  
 1-98  
 2-98  
 3-98  
 4-98  
 5-98  
 6-98  
 7-98  
 8-98  
 9-98  
 10-98  
 11-98  
 12-98  
 1-99  
 2-99  
 3-99  
 4-99  
 5-99  
 6-99  
 7-99  
 8-99  
 9-99  
 10-99  
 11-99  
 12-99  
 1-100  
 2-100  
 3-100  
 4-100  
 5-100  
 6-100  
 7-100  
 8-100  
 9-100  
 10-100  
 11-100  
 12-100