

Removal/Dispose of Present Guard Rail
 LT 403+00 - 403+15
 RT 403+00 - 403+30
 403+30 - 403+83

PRESENT R.O.W. PURCHASED FROM C. J. LASSOR BY
 W.D.E. 8/25/41 - BK 41 - PG 207 MANCHESTER
 APP. SUR STA 398+71 - 409+80

B.M. # 3
 Spot on headwall
 Elev. 790.56

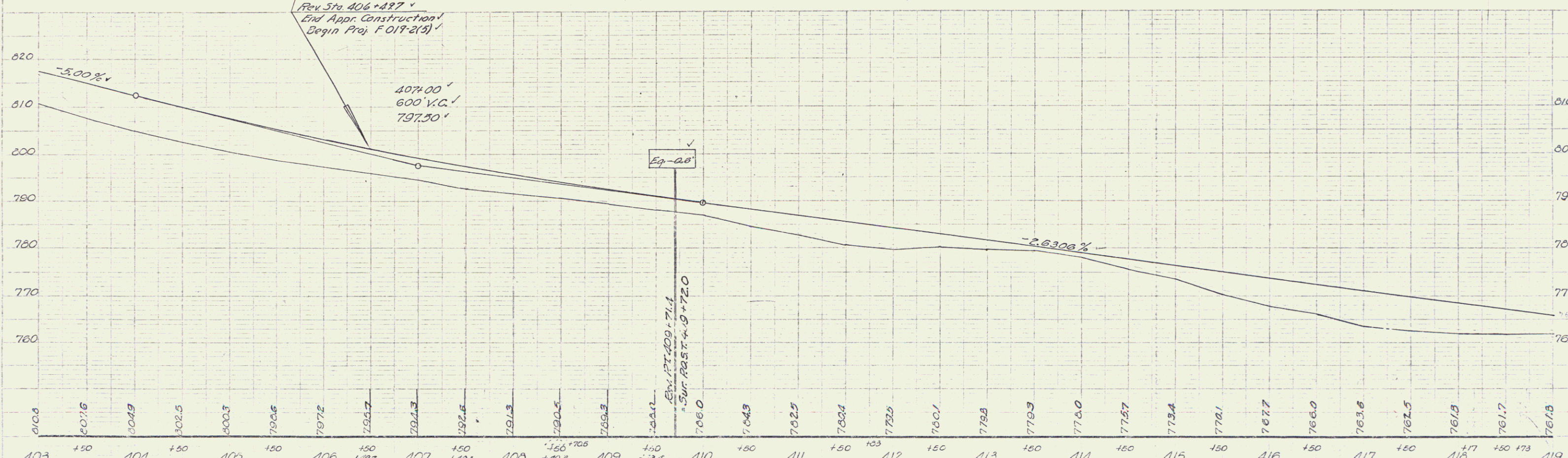
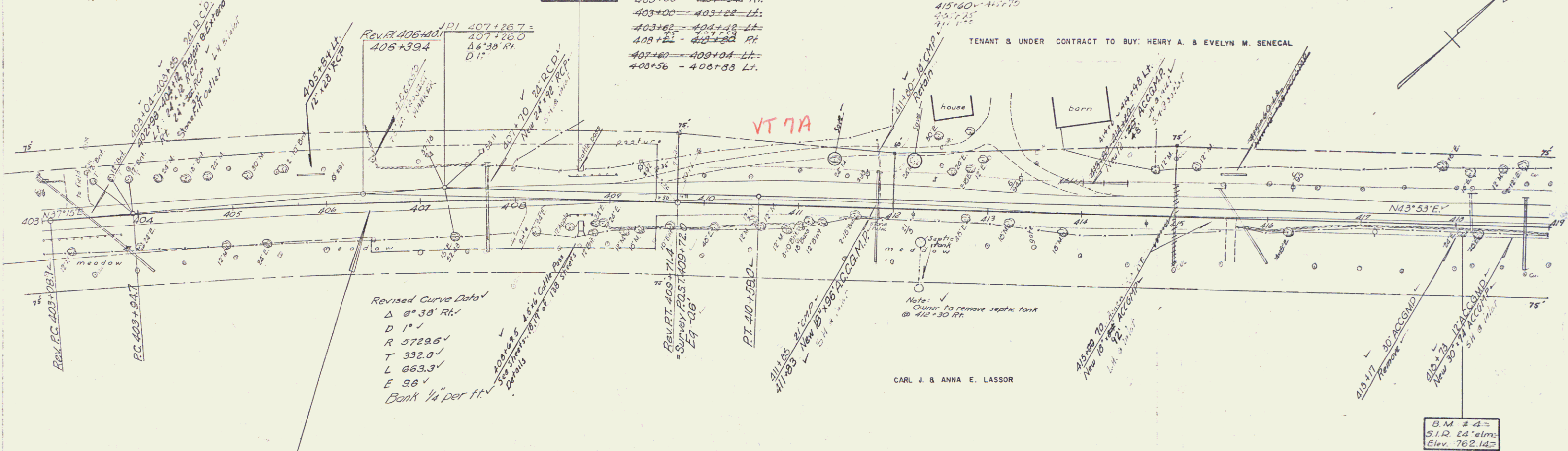
Three Cable Guard Rail with Steel Posts Item 543
 403+00 - 403+83 Rt.
 403+00 - 403+22 Lt.
 403+22 - 403+42 Lt.
 403+42 - 403+83 Rt.
 407+80 - 409+04 Lt.
 409+04 - 409+83 Lt.

Construct Drives
 Lt RT
 403+40 - 403+40
 404+00 - 403+42
 405+00 - 403+70
 405+75
 411+00

CARL J. & ANNA E. LASSOR

PLANK GUARD RAIL W/ PRESATIVE TREATMENT
 413+30 - 413+70 LT.

TENANT & UNDER CONTRACT TO BUY: HENRY A. & EVELYN M. SENEAL



B.M. # 3 Chiselled spot on west headwall cattle pass 24' left sta. 406+85, elevation 790.56
 B.M. # 4 Spike in root 24' elm, 18.5 ft. Rt. Sta. 416+00, elevation 762.14
 MANCHESTER - DORSET
 Proj. E. Nos. 019-2(1)
 Sheet 9 of 132