

THREE CABLE GUARD RAIL w/ STEEL POSTS  
 397+70-403+00  
 399+27  
 Removal & Disposal of Present Guard Rail  
 398+00-398+30 RT  
 399+00-403+00 RT  
 PLANK GUARD RAIL w/PRESERVATIVE TREATMENT  
 399+27

Construct Approach  
 398+00 RT  
 #1A NICHOLAS & ELEANOR LEMTUGOV  
 (A 0.02) STA 396+00-398+68  
 W.D.O.E. 12/16/58  
 RECORDED: MANCHESTER - BK 52 - PG 286 - 12/19/58

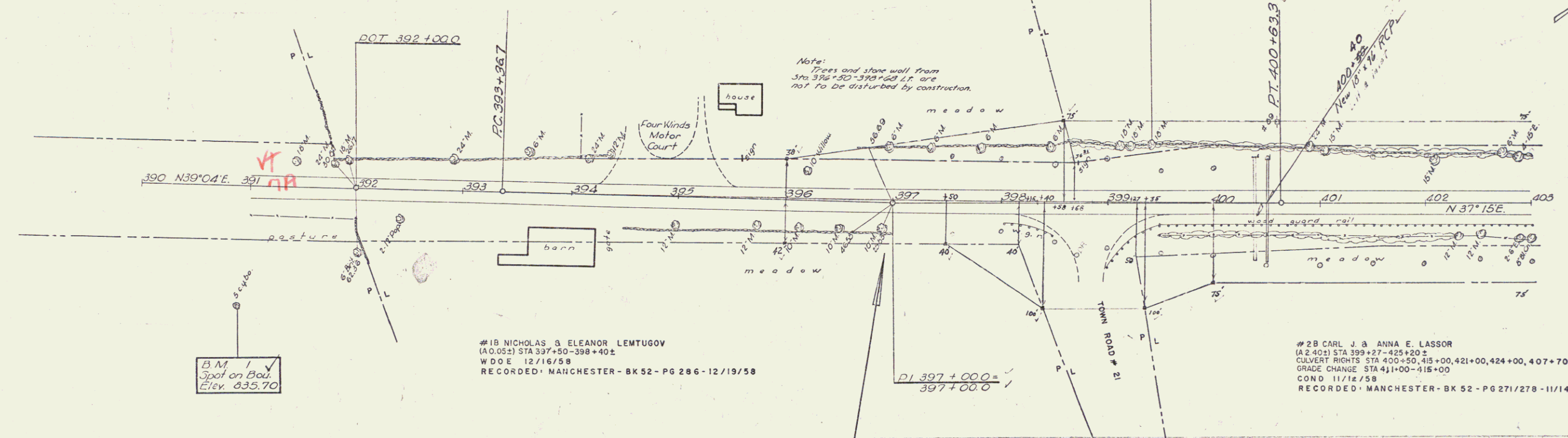
PRESENT ROW PURCHASED FROM H.P. WAY BY  
 W.D.O.E. 6-23-41 BK 41 PG 206 MANCHESTER L.R.  
 APR SUR. STA 391+76-399+71 E

PRESENT ROW ESTABLISHED BY F.A.P. 92 C (I) 1942  
 SUR. STA 391+00-409+50 LT & RT

$\Delta$  1° 49' L.V.  
 $D$  0° 15'  
 $R$  22918.3'  
 $T$  363.3'  
 $L$  726.6'  
 $E$  29'  
 Do not Bank

#2A CARL J. & ANNA E. LASSOR  
 (A 100) STA 398+58-419+92  
 COND. 11/12/58  
 RECORDED: MANCHESTER - BK 52 - PG 271/278 - 11/14/58

0.07  
 14-57  
 PLANK  
 14-57



0.07  
 14-57  
 PLANK  
 14-57

