

GPS CONTROL POINTS

HVCTRL #1

HORSESHOE  
 NORTH = 548435.580  
 EAST = 1651309.730  
 ELEV. = 874.340

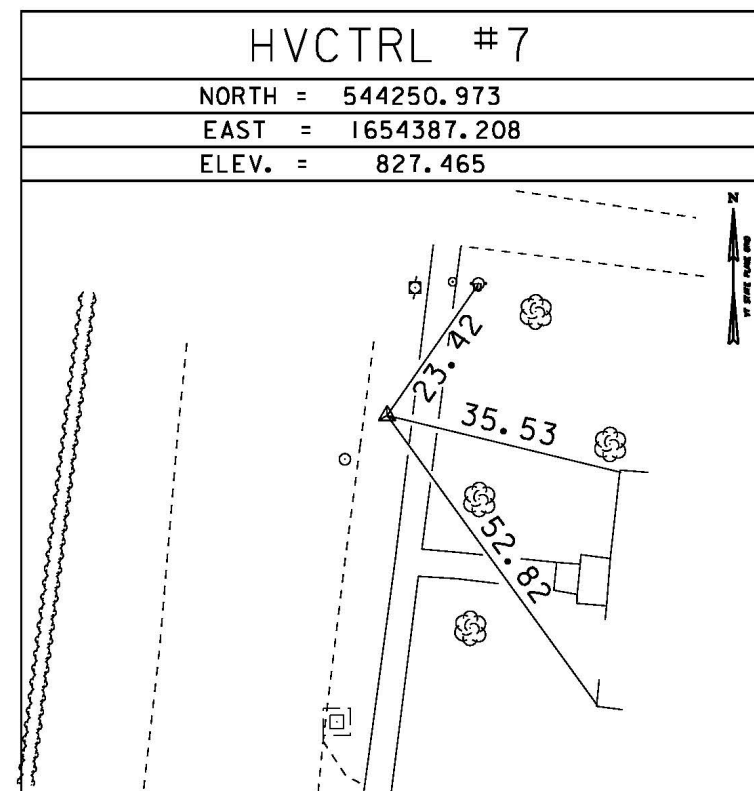
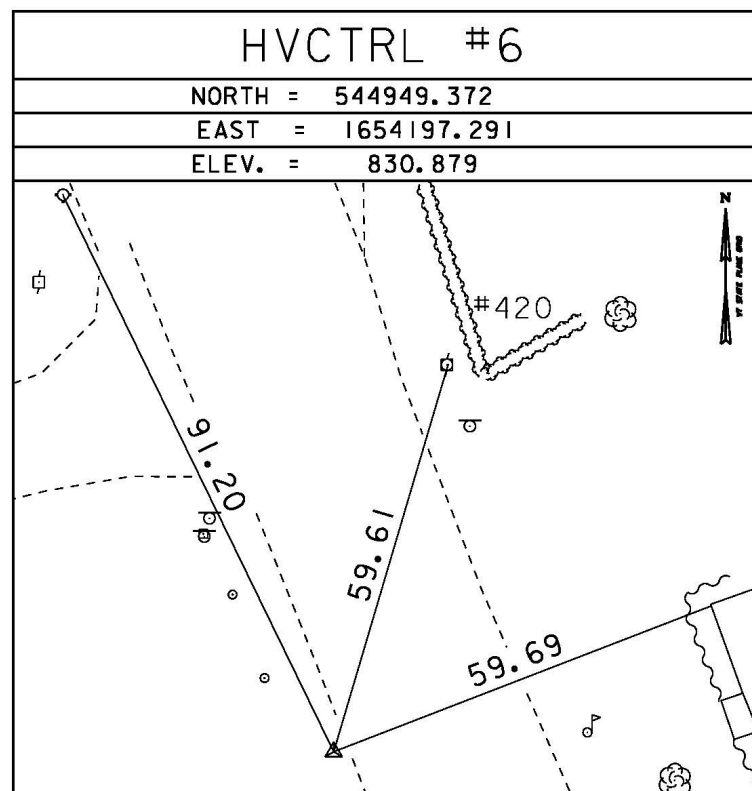
HVCTRL #2

VENISON  
 NORTH = 547447.660  
 EAST = 1652079.250  
 ELEV. = 852.560

GENERAL LOCATION, CHELSEA, VT. OWNERSHIP, RICHARD D. GILMAN, CHELSEA, VT. 05038. TO REACH FROM THE INTERSECTION OF VT ROUTES 110 AND 113 IN CHELSEA VILLAGE GO NORTH ALONG VT ROUTE 110 FOR 1.3 MI (2.1 KM) TO THE MARK ON THE LEFT. THE MARK IS SET FLUSH WITH GROUND SURFACE IN THE TOP OF A 30 CM DIAMETER CONCRETE MONUMENT. IT IS 7.5 M (24.6 FT) WEST OF AND ABOUT 0.3 M (1.0 FT) HIGHER THAN THE CENTERLINE OF VT ROUTE 110, 4.6 M (15.1 FT) SOUTHEAST OF POLE NO. 342A/471, 16.2 M (53.1 FT) SOUTHWEST OF POLE NO. 209, AND 0.4 M (1.3 FT) EAST OF A FIBERGLASS WITNESS POST.

GENERAL LOCATION, CHELSEA, VT. TO REACH FROM THE INTERSECTION OF VT ROUTES 110 AND 113 IN CHELSEA VILLAGE GO NORTH ALONG VT ROUTE 110 FOR 1.1 MI (1.8 KM) TO THE MARK ON THE LEFT IN A FIELD. THE MARK IS SET FLUSH WITH GROUND SURFACE IN THE TOP OF A 30 CM DIAMETER CONCRETE MONUMENT. IT IS 7.5 M (24.6 FT) WEST SOUTHWEST OF THE CENTERLINE OF VT ROUTE 110, 27.7 M (90.9 FT) NORTHWEST OF THE CENTER OF THE NORTH END OF THE VT ROUTE 110 BRIDGE OVER THE FIRST BRANCH, AND 24.4 M (80.1 FT) NORTH NORTHWEST OF POLE NO. 477.

TRAVERSE TIES



GPS CONTROL POINTS

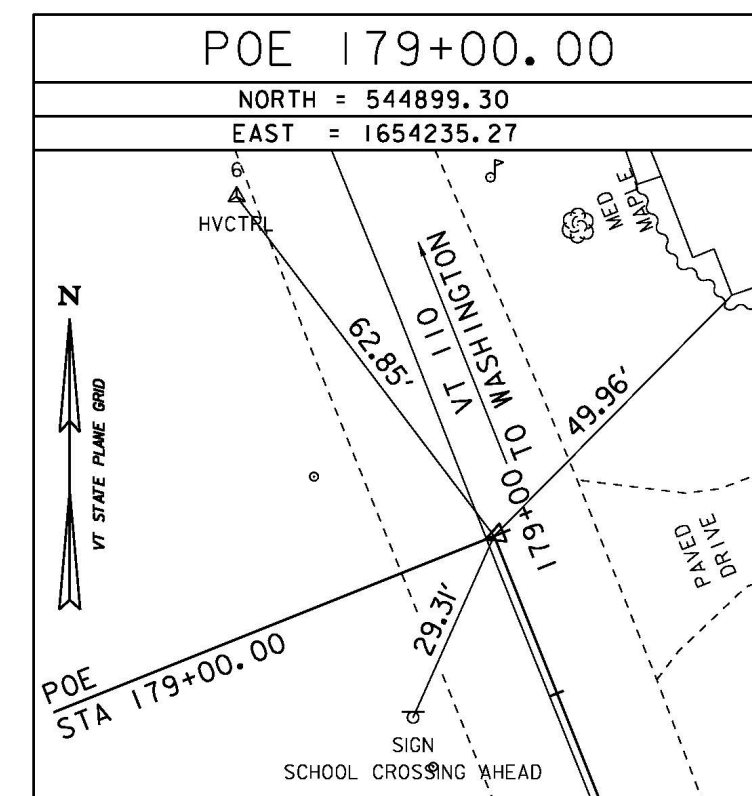
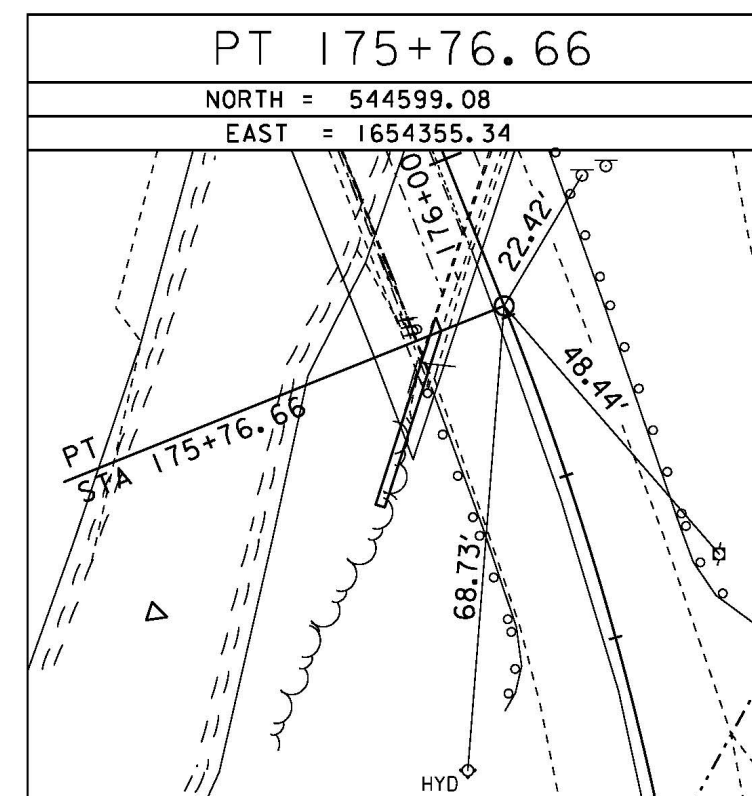
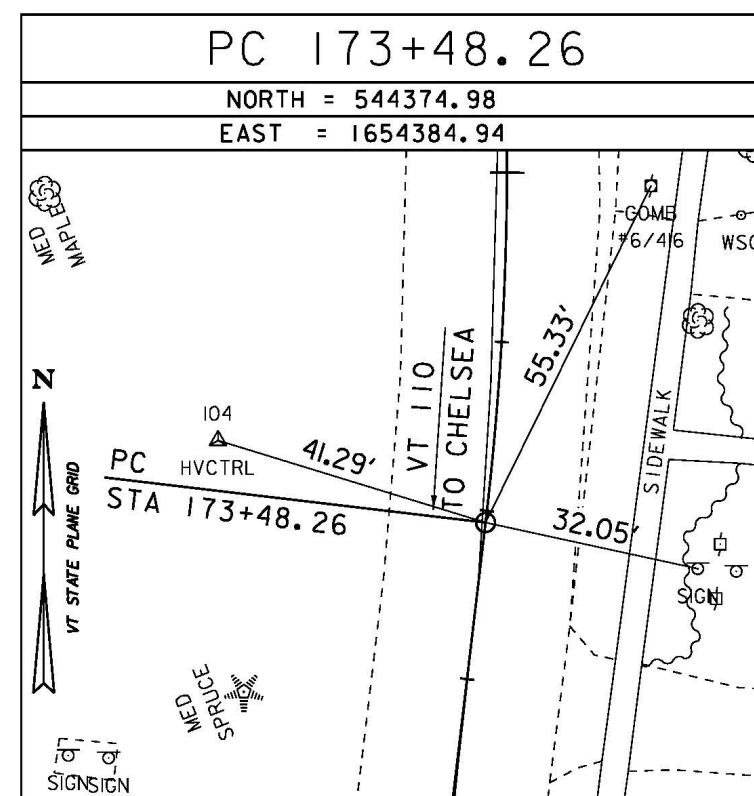
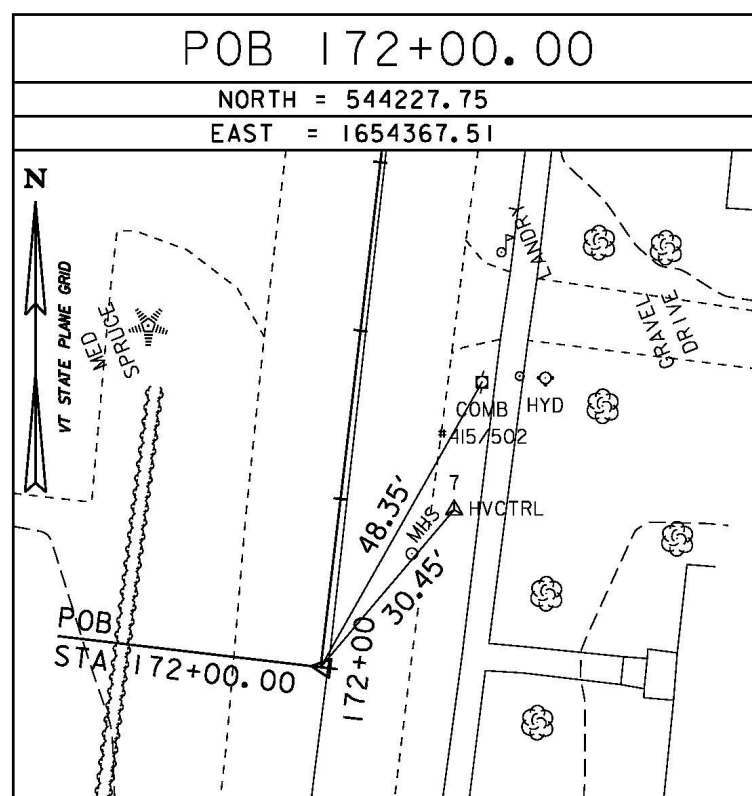
HVCTRL #11

CHELSEA  
 NORTH = 539486.250  
 EAST = 1654461.700  
 ELEV. = 797.500

GENERAL LOCATION, CHELSEA, VT. TO REACH FROM THE INTERSECTION OF VT ROUTES 110 AND 113 IN CHELSEA VILLAGE GO SOUTH ALONG VT ROUTE 110 FOR 0.5 MI (0.8 KM) TO THE INTERSECTION OF A PAVED ROAD LEFT. TURN LEFT AND GO EAST ALONG THE PAVED ROAD FOR 0.05 MI (0.08 KM) TO THE CHELSEA SEWER PLANT AND THE INTERSECTION OF A GRAVEL ROAD RIGHT, LEADING TO THE TOWN SAND PILE AND LITTLE LEAGUE FIELD. TURN RIGHT AND GO SOUTH ALONG THE GRAVEL ROAD FOR ABOUT 50 M (164.0 FT) TO THE SITE OF THE MARK ON THE LEFT BETWEEN THE LITTLE LEAGUE FIELD BACKSTOP AND A CHAIN LINK FENCE WHICH SURROUNDS THE SEWER PLANT. THE MARK IS SET FLUSH WITH GROUND SURFACE IN THE TOP OF THE SOUTHWEST END OF A LONG NARROW ROCK OUTCROP. IT IS 17.5 M (57.4 FT) EAST OF AND ABOUT 0.3 M (1.0 FT) HIGHER THAN THE CENTERLINE OF THE GRAVEL ROAD, 17.3 M (56.8 FT) SOUTH OF THE SOUTHWEST CORNER OF THE SEWER PLANT BUILDING, 4.7 M (15.4 FT) NORTHWEST OF THE NORTHEAST END OF THE BACKSTOP, 2.5 M (8.2 FT) SOUTHWEST OF THE SOUTH CORNER OF THE PHILIP BUTCH FARNHAM MEMORIAL STONE MONUMENT, AND 6.1 M (20.0 FT) SOUTH SOUTHWEST OF A FIBERGLASS WITNESS POST IN AN ANGLE POINT IN THE CHAIN LINK FENCE. RECOVERED IN GOOD CONDITION BY VTGS 3/12/1998.

\* MAIN TRAVERSE COMPLETED 5/11/2012 BY R. GILMAN P.C. & P. WINTERS & C. CYR

ALIGNMENT TIES



DATUM	
VERTICAL	NAVD 88
HORIZONTAL	NAD 83 (07)
ADJUSTMENT	COMPASS

PROJECT NAME:	CHELSEA
PROJECT NUMBER:	BHF 0169(10)
FILE NAME:	r12c1521te.dgn
PROJECT LEADER:	J. FITCH
DESIGNED BY:	TYLIN
TIE SHEET	
PLOT DATE:	23-OCT-2015
DRAWN BY:	TYLIN
CHECKED BY:	TYLIN
SHEET	8 OF 12