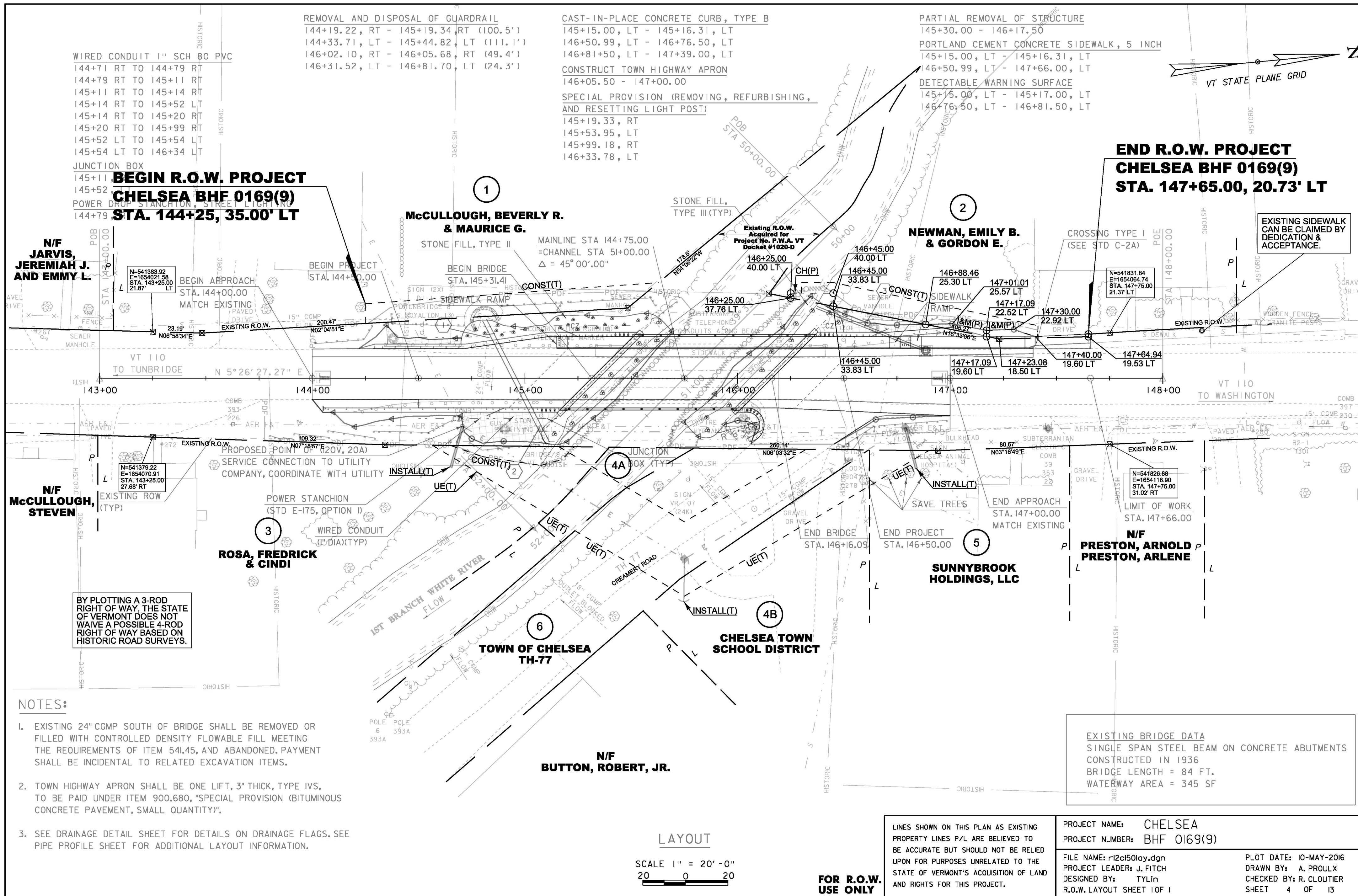


Original Drawing – Ink on Polymer meeting the requirements of 27 V.S.A. § 1403



REMOVAL AND DISPOSAL OF GUARDRAIL
 144+19.22, RT - 145+19.34, RT (100.5')
 144+33.71, LT - 145+44.82, LT (111.1')
 146+02.10, RT - 146+05.68, RT (49.4')
 146+31.52, LT - 146+81.70, LT (24.3')

CAST-IN-PLACE CONCRETE CURB, TYPE B
 145+15.00, LT - 145+16.31, LT
 146+50.99, LT - 146+76.50, LT
 146+81+50, LT - 147+39.00, LT

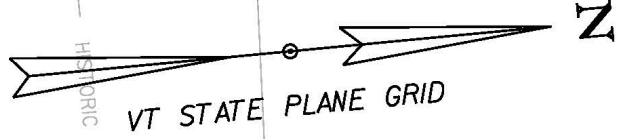
PARTIAL REMOVAL OF STRUCTURE
 145+30.00 - 146+17.50
 PORTLAND CEMENT CONCRETE SIDEWALK, 5 INCH
 145+15.00, LT - 145+16.31, LT
 146+50.99, LT - 147+66.00, LT
 DETECTABLE WARNING SURFACE
 145+15.00, LT - 145+17.00, LT
 146+76.50, LT - 146+81.50, LT

CONSTRUCT TOWN HIGHWAY APRON
 146+05.50 - 147+00.00
 SPECIAL PROVISION (REMOVING, REFURBISHING,
 AND RESETTING LIGHT POST)
 145+19.33, RT
 145+53.95, LT
 145+99.18, RT
 146+33.78, LT

WIRED CONDUIT 1" SCH 80 PVC
 144+71 RT TO 144+79 RT
 144+79 RT TO 145+11 RT
 145+11 RT TO 145+14 RT
 145+14 RT TO 145+52 LT
 145+14 RT TO 145+20 RT
 145+20 RT TO 145+99 RT
 145+52 LT TO 145+54 LT
 145+54 LT TO 146+34 LT

**BEGIN R.O.W. PROJECT
 CHELSEA BHF 0169(9)
 STA. 144+25, 35.00' LT**

**END R.O.W. PROJECT
 CHELSEA BHF 0169(9)
 STA. 147+65.00, 20.73' LT**



EXISTING SIDEWALK
 CAN BE CLAIMED BY
 DEDICATION &
 ACCEPTANCE.

VT 110 TO TUNBRIDGE N 5°26'27.27" E
 143+00 144+00 145+00 146+00 147+00 148+00
 VT 110 TO WASHINGTON

N/F
**JARVIS,
 JEREMIAH J.
 AND EMMY L.**

**McCULLOUGH, BEVERLY R.
 & MAURICE G.**

**NEWMAN, EMILY B.
 & GORDON E.**

N/F
**McCULLOUGH,
 STEVEN**

**ROSA, FREDRICK
 & CINDI**

N/F
**PRESTON, ARNOLD
 PRESTON, ARLENE**

**SUNNYBROOK
 HOLDINGS, LLC**

**TOWN OF CHELSEA
 TH-77**

**CHELSEA TOWN
 SCHOOL DISTRICT**

N/F
BUTTON, ROBERT, JR.

BY PLOTTING A 3-ROD
 RIGHT OF WAY, THE STATE
 OF VERMONT DOES NOT
 WAIVE A POSSIBLE 4-ROD
 RIGHT OF WAY BASED ON
 HISTORIC ROAD SURVEYS.

EXISTING BRIDGE DATA
 SINGLE SPAN STEEL BEAM ON CONCRETE ABUTMENTS
 CONSTRUCTED IN 1936
 BRIDGE LENGTH = 84 FT.
 WATERWAY AREA = 345 SF

- NOTES:**
- EXISTING 24" CGMP SOUTH OF BRIDGE SHALL BE REMOVED OR FILLED WITH CONTROLLED DENSITY FLOWABLE FILL MEETING THE REQUIREMENTS OF ITEM 541.45, AND ABANDONED. PAYMENT SHALL BE INCIDENTAL TO RELATED EXCAVATION ITEMS.
 - TOWN HIGHWAY APRON SHALL BE ONE LIFT, 3" THICK, TYPE IVS, TO BE PAID UNDER ITEM 900.680, "SPECIAL PROVISION (BITUMINOUS CONCRETE PAVEMENT, SMALL QUANTITY)".
 - SEE DRAINAGE DETAIL SHEET FOR DETAILS ON DRAINAGE FLAGS. SEE PIPE PROFILE SHEET FOR ADDITIONAL LAYOUT INFORMATION.

LAYOUT
 SCALE 1" = 20'-0"
 20 0 20

**FOR R.O.W.
 USE ONLY**

LINES SHOWN ON THIS PLAN AS EXISTING PROPERTY LINES P/L ARE BELIEVED TO BE ACCURATE BUT SHOULD NOT BE RELIED UPON FOR PURPOSES UNRELATED TO THE STATE OF VERMONT'S ACQUISITION OF LAND AND RIGHTS FOR THIS PROJECT.	PROJECT NAME: CHELSEA PROJECT NUMBER: BHF 0169(9)	FILE NAME: r12ci50lay.dgn PROJECT LEADER: J. FITCH DESIGNED BY: TYLIn R.O.W. LAYOUT SHEET 1 OF 1	PLOT DATE: 10-MAY-2016 DRAWN BY: A. PROULX CHECKED BY: R. CLOUTIER SHEET 4 OF 13
---	--	---	---