



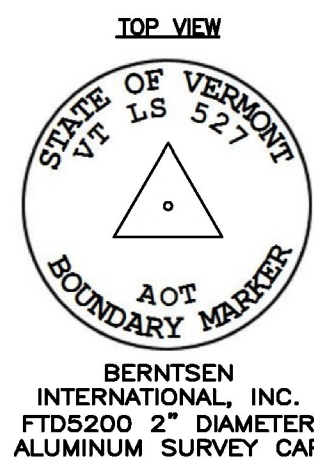
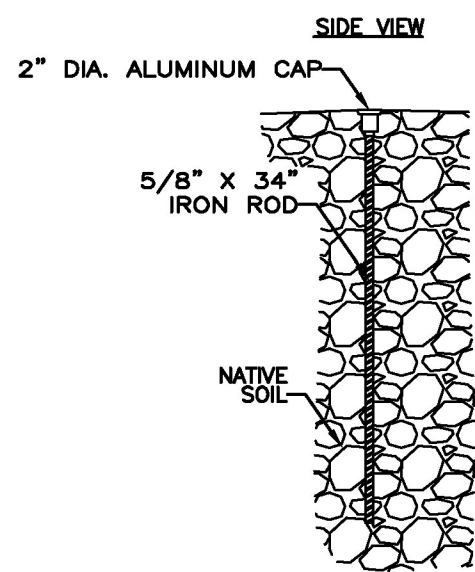
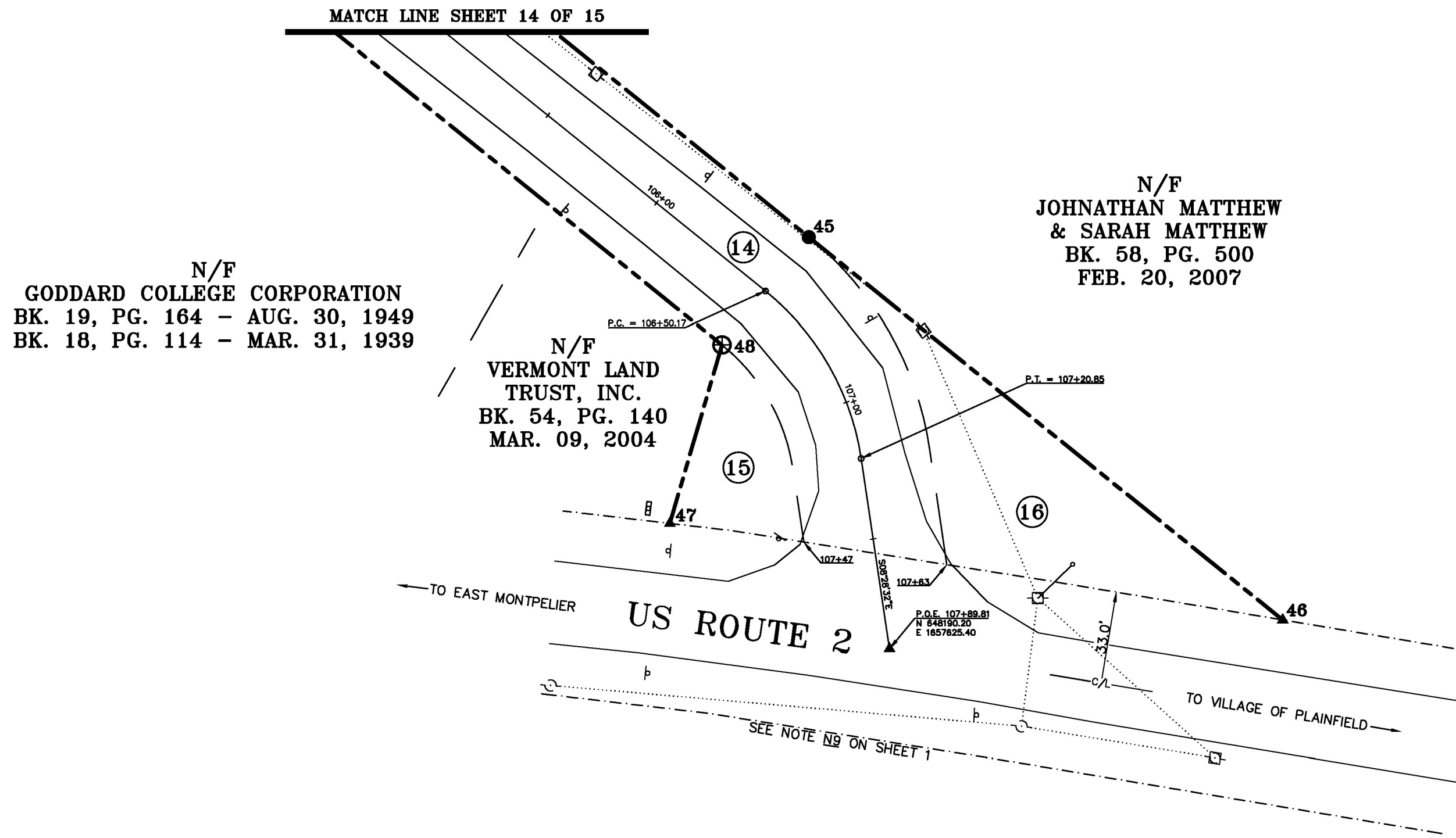
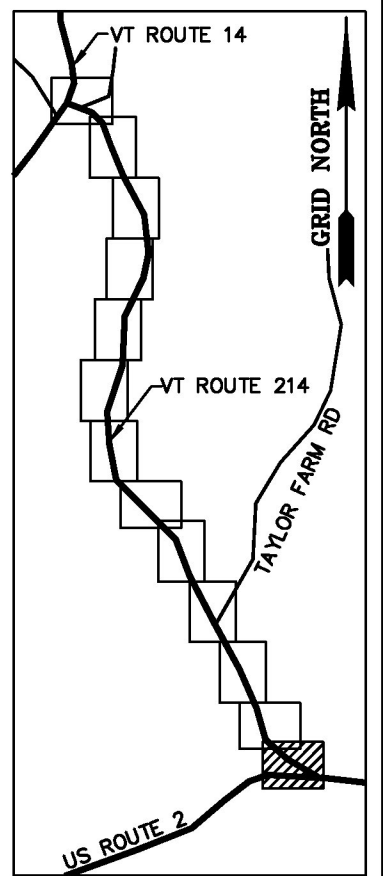
BASIS OF BEARINGS & COORDINATES
Datum: Horizontal - NAD 83 (GCS98) SPC (4400 VT) sFT

CURVE TABLE				
CURVE	CHORD BEARING	CHORD DISTANCE	RADIUS	LENGTH
106+50.17-107+20.85	S 29° 46' 45" E	69.06'	95.05'	70.68'

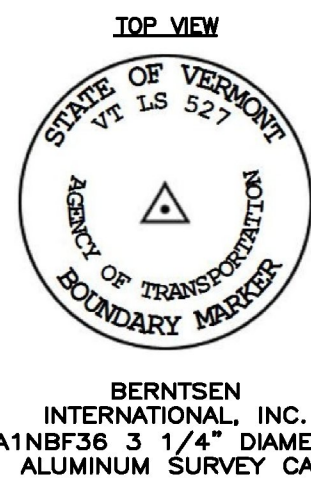
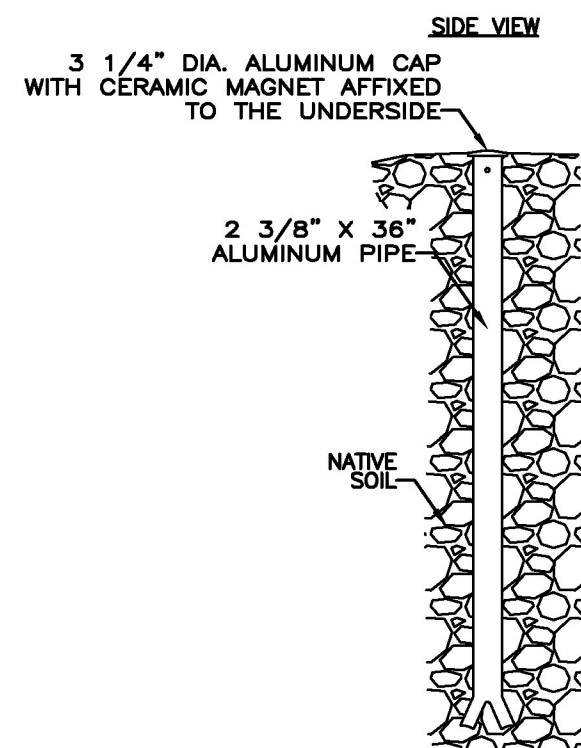
TIE LINE TABLE		
LINE	BEARING	DISTANCE
46-47	N 81° 02' 51" W	222.26'

RIGHT OF WAY LIMIT LINE TABLE		
LINE	BEARING	DISTANCE
45-46	S 51° 04' 58" E	218.17'
46-47	ALONG ROAD R.O.W.	222'±
47-48	N 16° 18' 16" E	66.63'

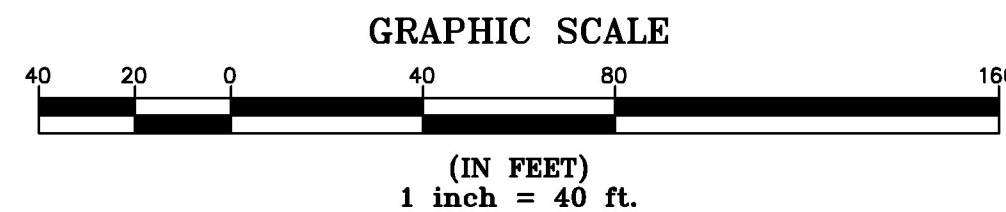
MONUMENT DETAIL TABLE			
MON. NO.	DESCRIPTION	COORDINATE	STATION
45	5/8" DIA. IRON ROD SET 0.5' ABOVE GROUND (SEE DETAILS BELOW)	N 648337.60 E 1657596.48	106+50.17 24.75' LEFT
46	UNMONUMENTED POINT	N 648200.55 E 1657766.23	108+00.33 140.82' LEFT
47	UNMONUMENTED POINT	N 648235.13 E 1657546.68	107+33.76 71.24' RIGHT
48	2 3/8" DIA. ALUMINUM MONUMENT SET FLUSH (SEE DETAILS BELOW)	N 648299.09 E 1657565.38	106+50.17 24.75' RIGHT



MONUMENT SET TYPE "A" DETAILS



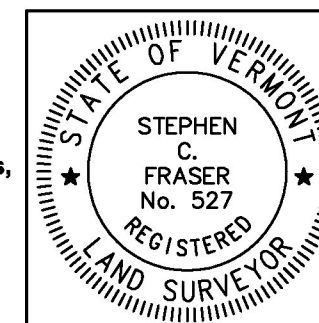
MONUMENT SET TYPE "B" DETAILS



I certify that this plat is based on information abstracted from documents, parol evidence, and physical evidence. The survey work identified hereon is consistent with this information.

I certify that this plat meets the requirements of 27 VSA Section 1403 and complies with Vermont Board of Land Surveyors Rules, Part 5.4 and 5.5, adopted under 26 VSA Section 2544(a).

Signed: *Stephen C. Fraser*
Stephen C. Fraser, L.S. #527



STATUTORY RESURVEY
STATE OF VERMONT
VERMONT ROUTE 214
EAST MONTPELIER - MARSHFIELD - PLAINFIELD
WASHINGTON COUNTY, VERMONT

SCALE: 1" = 40' PLAT COMPILATION DATE: 4-23-2012
R.O.W. WIDTH = VARIES DRAWN BY: JMR SHEET 15 OF 15

Vermont Survey and Engineering, Inc.
79 River Street, Montpelier, Vermont
(802) 229-9138 ~ info@vermontsurvey.com