
  
**BASIS OF BEARINGS & COORDINATES**
  
 Datum: Horizontal - NAD 83(CORS96) SPC (4400 VT) sFT

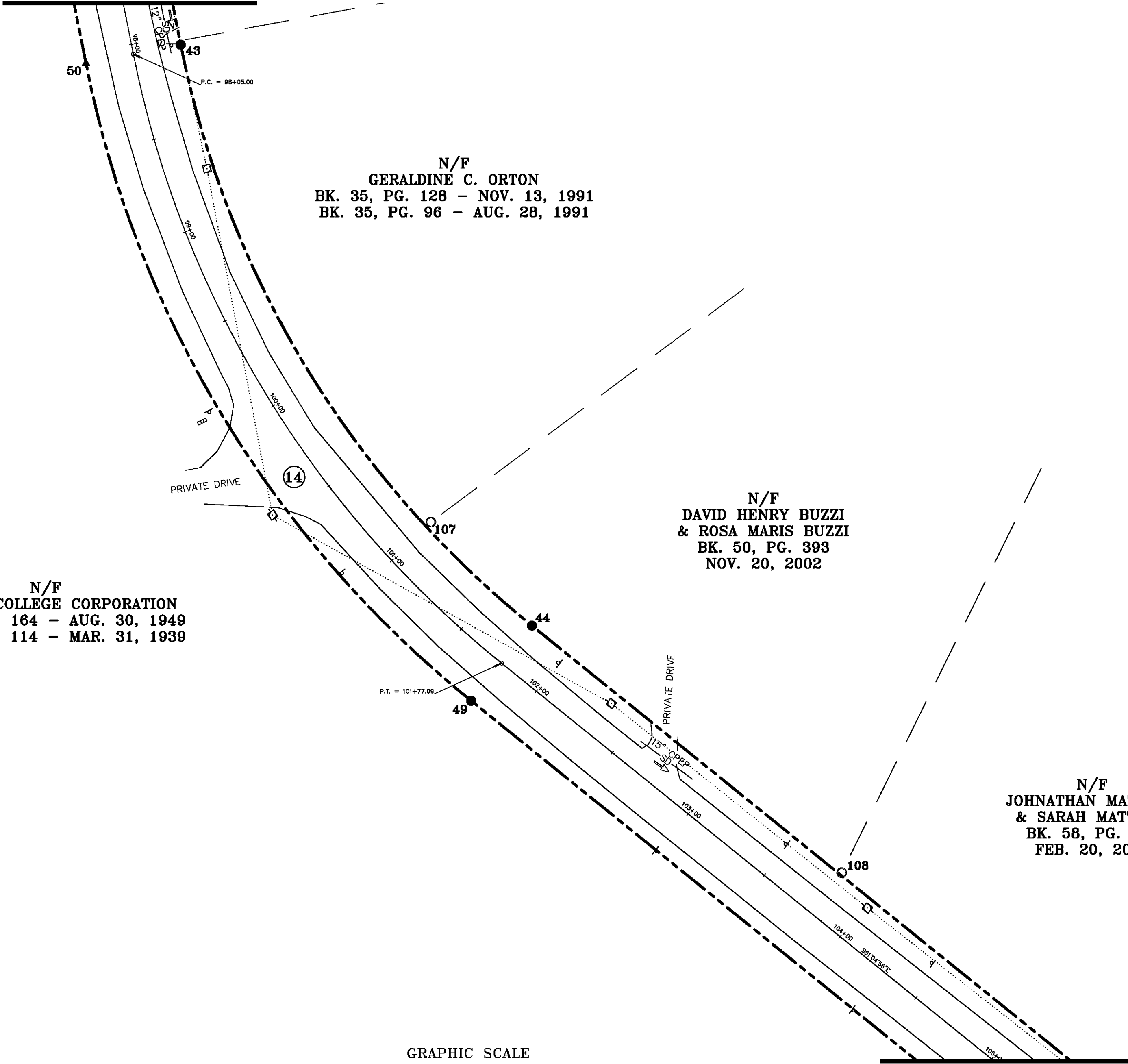
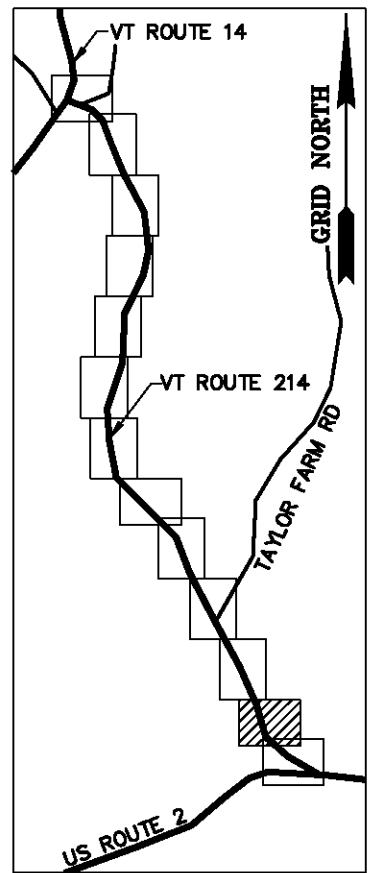
MATCH LINE SHEET 13 OF 15

N/F  
**GERALDINE C. ORTON**  
 BK. 35, PG. 128 - NOV. 13, 1991  
 BK. 35, PG. 96 - AUG. 28, 1991

N/F  
**DAVID HENRY BUZZI  
 & ROSA MARIS BUZZI**  
 BK. 50, PG. 393  
 NOV. 20, 2002

N/F  
**GODDARD COLLEGE CORPORATION**  
 BK. 19, PG. 164 - AUG. 30, 1949  
 BK. 18, PG. 114 - MAR. 31, 1939

N/F  
**JOHNATHAN MATTHEW  
 & SARAH MATTHEW**  
 BK. 58, PG. 500  
 FEB. 20, 2007



MATCH LINE SHEET 15 OF 15

GRAPHIC SCALE



MONUMENT DETAIL TABLE			
MON. NO.	DESCRIPTION	COORDINATE	STATION
43	5/8" DIA. IRON ROD SET 0.5' ABOVE GROUND (SEE DETAILS ON SHEET 15)	N 648932.38 E 1657048.44	98+05.00 24.75' LEFT
44	5/8" DIA. IRON ROD SET 0.5' ABOVE GROUND (SEE DETAILS ON SHEET 15)	N 648634.79 E 1657228.39	101+77.09 24.75' LEFT
49	5/8" DIA. IRON ROD SET FLUSH (SEE DETAILS ON SHEET 15)	N 648596.28 E 1657197.30	101+77.09 24.75' RIGHT
50	UNMONUMENTED POINT	N 648922.74 E 1656999.89	98+05.00 24.75' RIGHT
107	1" O.D. IRON PIPE FOUND 2.0' ABOVE GROUND - STABLE	N 648687.87 E 1657176.62	100+99.10 28.15' LEFT
108	1" O.D. IRON PIPE FOUND 0.3' ABOVE GROUND - STABLE	N 648508.25 E 1657387.14	103+80.09 26.02' LEFT

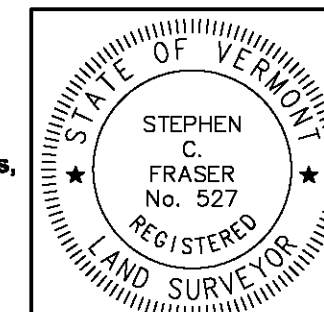
RIGHT OF WAY LIMIT LINE TABLE		
LINE	BEARING	DISTANCE
43-44	SEE CURVE TABLE	
44-45	S 51° 04' 58" E	473.09'
48-49	N 51° 04' 58" W	473.09'
49-50	SEE CURVE TABLE	

CURVE TABLE				
CURVE	CHORD BEARING	CHORD DISTANCE	RADIUS	LENGTH
43-44	S 31° 09' 39" E	347.77'	510.32'	354.88'
49-50	N 31° 09' 39" W	381.50'	559.82'	389.30'
98+05.00-101+77.09	S 31° 09' 39" E	364.64'	535.07'	372.09'

I certify that this plat is based on information abstracted from documents, parol evidence, and physical evidence. The survey work identified hereon is consistent with this information.

I certify that this plat meets the requirements of 27 VSA Section 1403 and complies with Vermont Board of Land Surveyors Rules, Part 5.4 and 5.5, adopted under 26 VSA Section 2544(a).

Signed: *Stephen C. Fraser*  
Stephen C. Fraser, L.S. #527



**STATUTORY RESURVEY**  
**STATE OF VERMONT**  
**VERMONT ROUTE 214**  
 EAST MONTPELIER - MARSHFIELD - PLAINFIELD  
 WASHINGTON COUNTY, VERMONT  
 SCALE: 1" = 40' | PLAT COMPILATION DATE: 4-23-2012  
 R.O.W. WIDTH = 49.50' | DRAWN BY: JMR | SHEET 14 OF 15  
**Vermont Survey and Engineering, Inc.**  
 79 River Street, Montpelier, Vermont  
 (802) 229-9138 ~ info@vermontsurvey.com

ORIGINAL DRAWING-INK ON POLYESTER FILM MEETING THE REQUIREMENTS OF 27 VSA 1403