

BASIS OF BEARINGS & COORDINATES
Datum: Horizontal - NAD 83(CORS96) SPC (4400 VT) sFT

N/F
TOWN OF PLAINFIELD
BK. 21, PG. 398
NOV. 23, 1964

N/F
KENNETH F. SMITH
BK. 56, PG. 128
APR. 14, 2005

N/F
TOWN OF PLAINFIELD
BK. 21, PG. 398
NOV. 23, 1964

N/F
JEMMA ALIX LEVY
(FREDERIC L. LEVY &
RHEA WILSON LIFE ESTATE)
BK. 57, PG. 110
OCT. 18, 2005

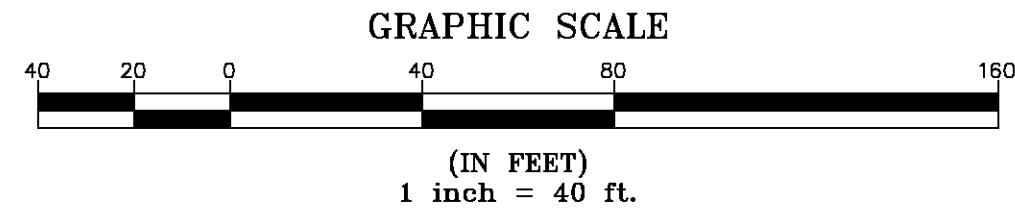
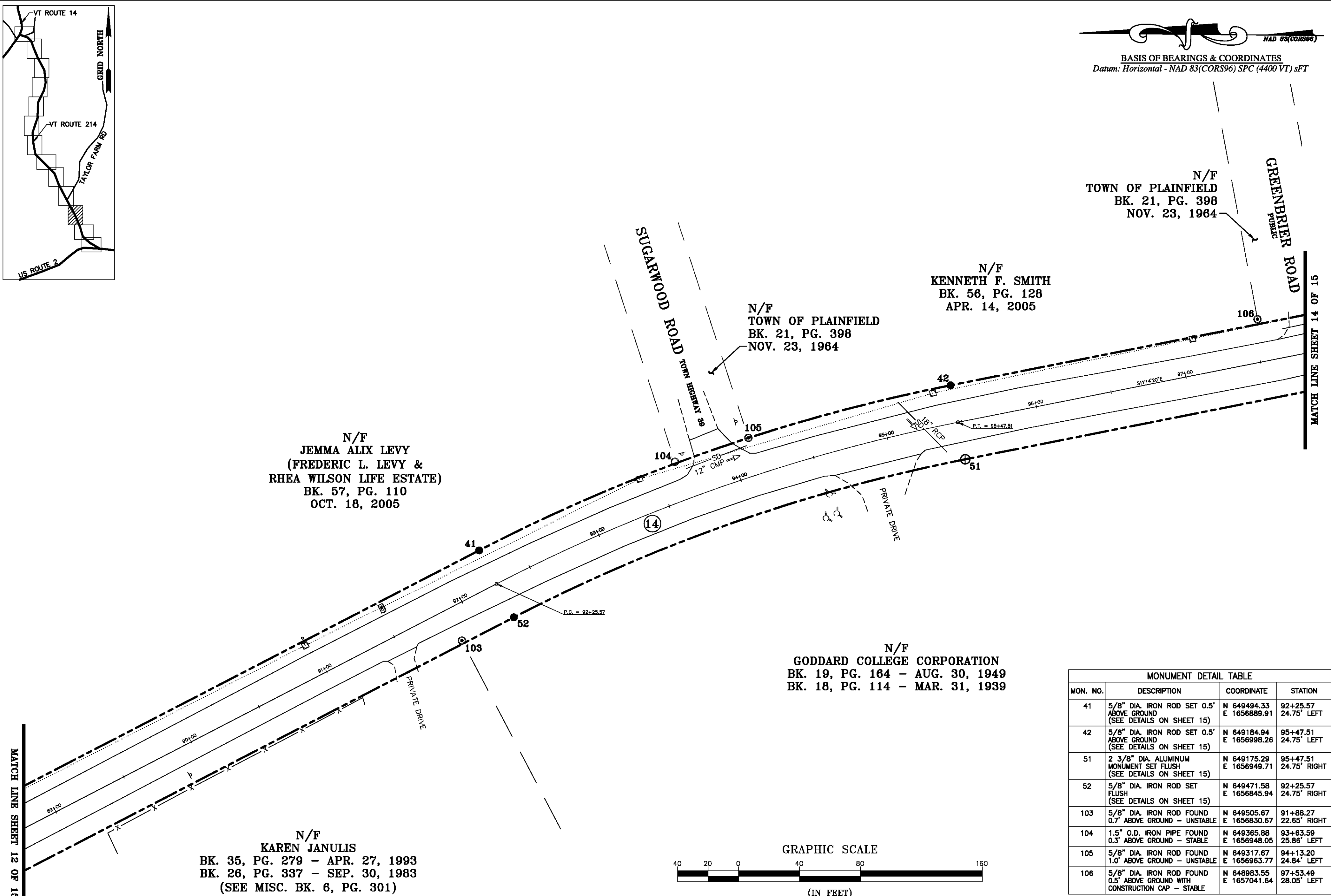
N/F
GODDARD COLLEGE CORPORATION
BK. 19, PG. 164 - AUG. 30, 1949
BK. 18, PG. 114 - MAR. 31, 1939

N/F
KAREN JANULIS
BK. 35, PG. 279 - APR. 27, 1993
BK. 26, PG. 337 - SEP. 30, 1983
(SEE MISC. BK. 6, PG. 301)

MATCH LINE SHEET 12 OF 15

MATCH LINE SHEET 14 OF 15

ORIGINAL DRAWING-INK ON POLYESTER FILM MEETING THE REQUIREMENTS OF 27 VSA 1403



MONUMENT DETAIL TABLE			
MON. NO.	DESCRIPTION	COORDINATE	STATION
41	5/8" DIA. IRON ROD SET 0.5' ABOVE GROUND (SEE DETAILS ON SHEET 15)	N 649494.33 E 1656889.91	92+25.57 24.75' LEFT
42	5/8" DIA. IRON ROD SET 0.5' ABOVE GROUND (SEE DETAILS ON SHEET 15)	N 649184.94 E 1656998.26	95+47.51 24.75' LEFT
51	2 3/8" DIA. ALUMINUM MONUMENT SET FLUSH (SEE DETAILS ON SHEET 15)	N 649175.29 E 1656949.71	95+47.51 24.75' RIGHT
52	5/8" DIA. IRON ROD SET FLUSH (SEE DETAILS ON SHEET 15)	N 649471.58 E 1656845.94	92+25.57 24.75' RIGHT
103	5/8" DIA. IRON ROD FOUND 0.7' ABOVE GROUND - UNSTABLE	N 649505.67 E 1656830.67	91+88.27 22.65' RIGHT
104	1.5" O.D. IRON PIPE FOUND 0.3' ABOVE GROUND - STABLE	N 649365.88 E 1656948.05	93+63.59 25.86' LEFT
105	5/8" DIA. IRON ROD FOUND 1.0' ABOVE GROUND - UNSTABLE	N 649317.67 E 1656963.77	94+13.20 24.84' LEFT
106	5/8" DIA. IRON ROD FOUND 0.5' ABOVE GROUND WITH CONSTRUCTION CAP - STABLE	N 648983.55 E 1657041.64	97+53.49 28.05' LEFT

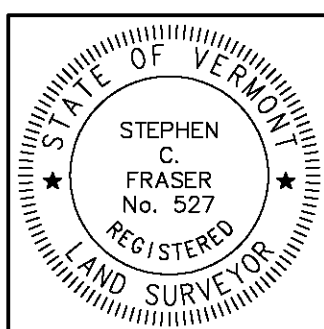
CURVE TABLE				
CURVE	CHORD BEARING	CHORD DISTANCE	RADIUS	LENGTH
41-42	S 19° 18' 02" E	327.82'	1168.81'	328.91'
51-52	N 19° 18' 02" W	313.94'	1119.31'	314.98'
92+25.57-95+47.51	S 19° 18' 02" E	320.88'	1144.06'	321.94'

RIGHT OF WAY LIMIT LINE TABLE		
LINE	BEARING	DISTANCE
41-42	SEE CURVE TABLE	
42-43	S 11° 14' 20" E	257.49'
50-51	N 11° 14' 20" W	257.49'
51-52	SEE CURVE TABLE	
52-53	N 27° 21' 44" W	688.76'

I certify that this plat is based on information abstracted from documents, parol evidence, and physical evidence. The survey work identified hereon is consistent with this information.

I certify that this plat meets the requirements of 27 VSA Section 1403 and complies with Vermont Board of Land Surveyors Rules, Part 5.4 and 5.5, adopted under 26 VSA Section 2544(a).

Signed: *Stephen C. Fraser*
Stephen C. Fraser, L.S. #527



STATUTORY RESURVEY
STATE OF VERMONT
VERMONT ROUTE 214
EAST WAMPETLIER - MARSHFIELD - PLAINFIELD
WASHINGTON COUNTY, VERMONT

SCALE: 1" = 40' PLAT COMPILATION DATE: 4-23-2012
R.O.W. WIDTH = 49.50' DRAWN BY: JMR SHEET 13 OF 15

Vermont Survey and Engineering, Inc.
79 River Street, Montpelier, Vermont
(802) 229-9138 ~ info@vermontsurvey.com