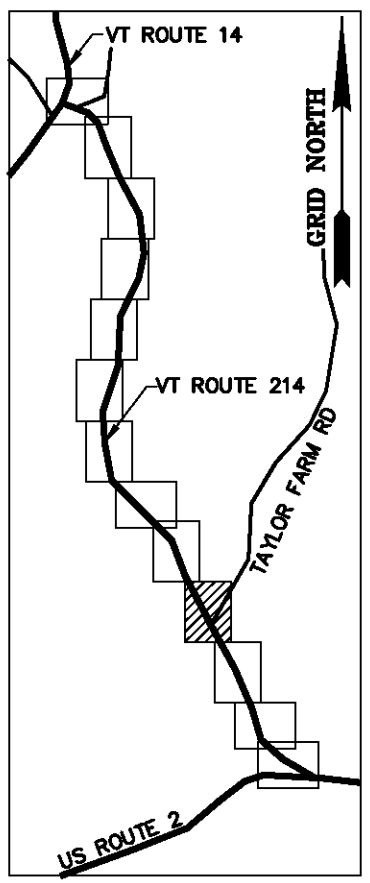


BASIS OF BEARINGS & COORDINATES
Datum: Horizontal - NAD 83(CORS96) SPC (4400 VT) sFT



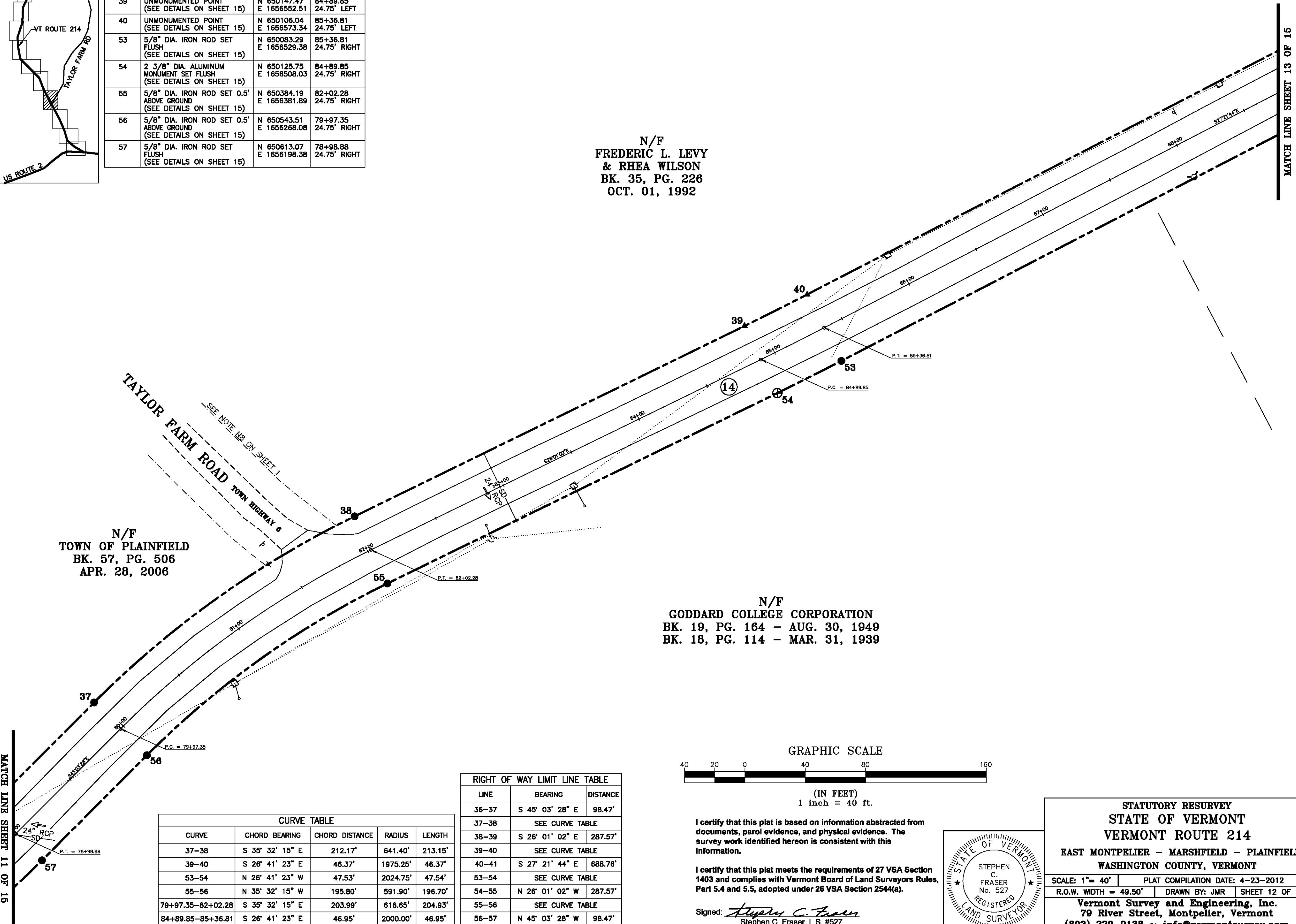
| MONUMENT DETAIL TABLE | | | |
|-----------------------|--|-----------------------------|--------------------------|
| MON. NO. | DESCRIPTION | COORDINATE | STATION |
| 37 | 5/8" DIA. IRON ROD SET 0.5' ABOVE GROUND (SEE DETAILS ON SHEET 15) | N 650578.55 E 1656303.05 | 79+97.35 24.75' LEFT |
| 38 | 5/8" DIA. IRON ROD SET 0.5' ABOVE GROUND (SEE DETAILS ON SHEET 15) | N 650405.90 E 1656426.37 | 82+02.28 24.75' LEFT |
| 39 | UNMONUMENTED POINT (SEE DETAILS ON SHEET 15) | N 650147.47 E 1656552.51 | 84+89.85 24.75' LEFT |
| 40 | UNMONUMENTED POINT (SEE DETAILS ON SHEET 15) | N 650106.04 E 1656573.34 | 85+36.81 24.75' LEFT |
| 53 | 5/8" DIA. IRON ROD SET FLUSH (SEE DETAILS ON SHEET 15) | N 650083.29 E 1656529.38 | 85+36.81 24.75' RIGHT |
| 54 | 2 3/8" DIA. ALUMINUM MONUMENT SET FLUSH (SEE DETAILS ON SHEET 15) | N 650125.75 E 1656508.03 | 84+89.85 24.75' RIGHT |
| 55 | 5/8" DIA. IRON ROD SET 0.5' ABOVE GROUND (SEE DETAILS ON SHEET 15) | N 650384.19 E 1656381.89 | 82+02.28 24.75' RIGHT |
| 56 | 5/8" DIA. IRON ROD SET 0.5' ABOVE GROUND (SEE DETAILS ON SHEET 15) | N 650543.51 E 1656268.08 | 79+97.35 24.75' RIGHT |
| 57 | 5/8" DIA. IRON ROD SET FLUSH (SEE DETAILS ON SHEET 15) | N 650613.07 E 1656198.38 | 78+98.88 24.75' RIGHT |

N/F
FREDERIC L. LEVY
& RHEA WILSON
BK. 35, PG. 226
OCT. 01, 1992

N/F
TOWN OF PLAINFIELD
BK. 57, PG. 506
APR. 28, 2006

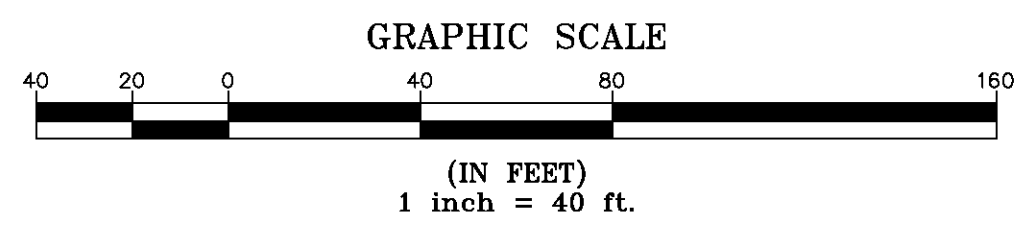
N/F
GODDARD COLLEGE CORPORATION
BK. 19, PG. 164 - AUG. 30, 1949
BK. 18, PG. 114 - MAR. 31, 1939

TAYLOR FARM ROAD TOWN HIGHWAY 6
SEE NOTE A8 ON SHEET 1



| LINE | BEARING | DISTANCE |
|-------|-----------------|----------|
| 36-37 | S 45° 03' 28" E | 98.47' |
| 37-38 | SEE CURVE TABLE | |
| 38-39 | S 26° 01' 02" E | 287.57' |
| 39-40 | SEE CURVE TABLE | |
| 40-41 | S 27° 21' 44" E | 688.76' |
| 53-54 | SEE CURVE TABLE | |
| 54-55 | N 26° 01' 02" W | 287.57' |
| 55-56 | SEE CURVE TABLE | |
| 56-57 | N 45° 03' 28" W | 98.47' |

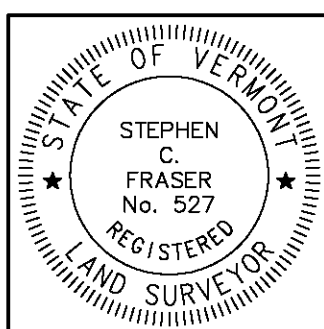
| CURVE | CHORD BEARING | CHORD DISTANCE | RADIUS | LENGTH |
|-------------------|-----------------|----------------|----------|---------|
| 37-38 | S 35° 32' 15" E | 212.17' | 641.40' | 213.15' |
| 39-40 | S 26° 41' 23" E | 46.37' | 1975.25' | 46.37' |
| 53-54 | N 26° 41' 23" W | 47.53' | 2024.75' | 47.54' |
| 55-56 | N 35° 32' 15" W | 195.80' | 591.90' | 196.70' |
| 79+97.35-82+02.28 | S 35° 32' 15" E | 203.99' | 616.65' | 204.93' |
| 84+89.85-85+36.81 | S 26° 41' 23" E | 46.95' | 2000.00' | 46.95' |



I certify that this plat is based on information abstracted from documents, parol evidence, and physical evidence. The survey work identified hereon is consistent with this information.

I certify that this plat meets the requirements of 27 VSA Section 1403 and complies with Vermont Board of Land Surveyors Rules, Part 5.4 and 5.5, adopted under 26 VSA Section 2544(a).

Signed: *Stephen C. Fraser*
Stephen C. Fraser, L.S. #527



STATUTORY RESURVEY
STATE OF VERMONT
VERMONT ROUTE 214
EAST MONTPELIER - MARSHFIELD - PLAINFIELD
WASHINGTON COUNTY, VERMONT

SCALE: 1" = 40' | PLAT COMPILATION DATE: 4-23-2012
R.O.W. WIDTH = 49.50' | DRAWN BY: JMR | SHEET 12 OF 15

Vermont Survey and Engineering, Inc.
79 River Street, Montpelier, Vermont
(802) 229-9138 ~ info@vermontsurvey.com

ORIGINAL DRAWING-INK ON POLYESTER FILM MEETING THE REQUIREMENTS OF 27 VSA 1403

MATCH LINE SHEET 11 OF 15

MATCH LINE SHEET 13 OF 15