



BASIS OF BEARINGS & COORDINATES
Datum: Horizontal - NAD 83(CORS96) SPC (4400 VT) sFT

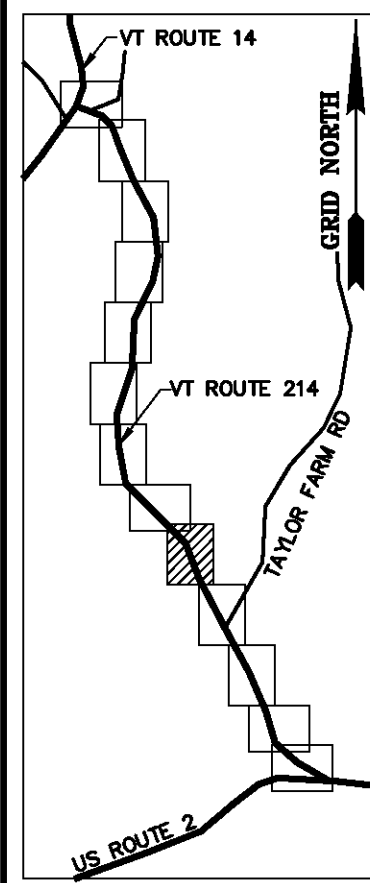
N/F
TOWN OF PLAINFIELD
BK. 57, PG. 506
APR. 28, 2006

N/F
SARAH FOWLER
BK. 57, PG. 243
AUG. 24, 2001
(SEE BK. 78, PG. 39)

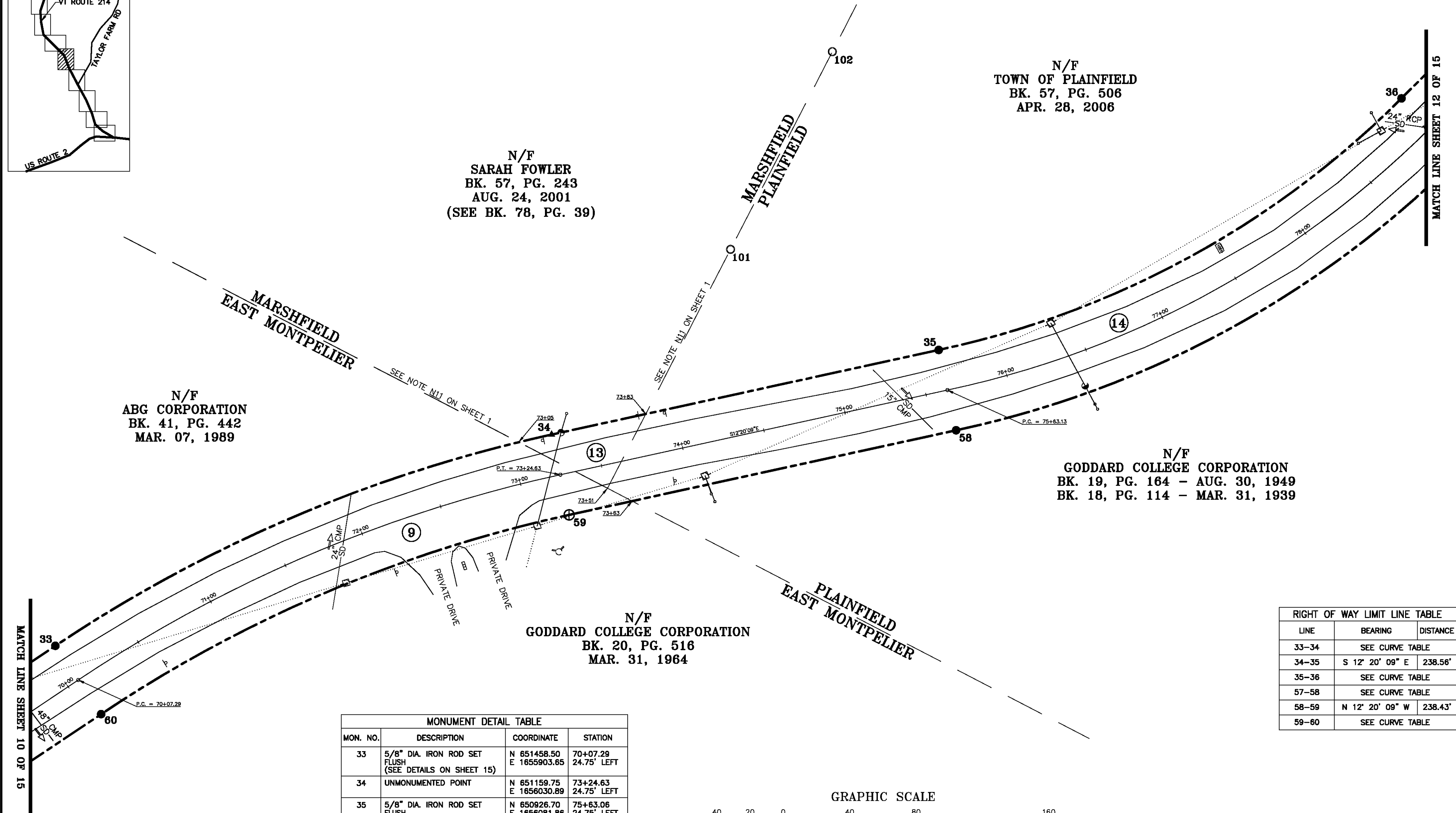
N/F
ABG CORPORATION
BK. 41, PG. 442
MAR. 07, 1989

N/F
GODDARD COLLEGE CORPORATION
BK. 19, PG. 164 - AUG. 30, 1949
BK. 18, PG. 114 - MAR. 31, 1939

N/F
GODDARD COLLEGE CORPORATION
BK. 20, PG. 516
MAR. 31, 1964



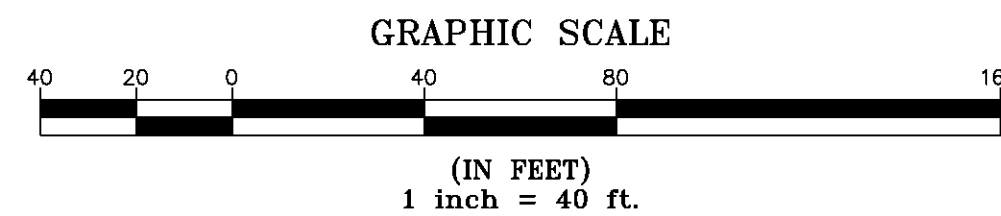
ORIGINAL DRAWING-INK ON POLYESTER FILM MEETING THE REQUIREMENTS OF 27 VSA 1403



LINE	BEARING	DISTANCE
33-34	SEE CURVE TABLE	
34-35	S 12° 20' 09" E	238.56'
35-36	SEE CURVE TABLE	
57-58	SEE CURVE TABLE	
58-59	N 12° 20' 09" W	238.43'
59-60	SEE CURVE TABLE	

MON. NO.	DESCRIPTION	COORDINATE	STATION
33	5/8" DIA. IRON ROD SET FLUSH (SEE DETAILS ON SHEET 15)	N 651458.50 E 1655903.85	70+07.29 24.75' LEFT
34	UNMONUMENTED POINT	N 651159.75 E 1656030.89	73+24.63 24.75' LEFT
35	5/8" DIA. IRON ROD SET FLUSH (SEE DETAILS ON SHEET 15)	N 650926.70 E 1656081.86	75+63.06 24.75' LEFT
36	5/8" DIA. IRON ROD SET FLUSH (SEE DETAILS ON SHEET 15)	N 650848.11 E 1656233.35	78+98.88 24.75' LEFT
58	5/8" DIA. IRON ROD SET FLUSH (SEE DETAILS ON SHEET 15)	N 650916.26 E 1656033.47	75+63.06 24.75' RIGHT
59	2 3/8" DIA. ALUMINUM MONUMENT SET FLUSH (SEE DETAILS ON SHEET 15)	N 651149.18 E 1655982.53	73+24.63 24.75' RIGHT
60	5/8" DIA. IRON ROD SET FLUSH (SEE DETAILS ON SHEET 15)	N 651430.96 E 1655862.52	70+07.29 24.75' RIGHT
101	1" O.D. IRON PIPE FOUND 3.0' ABOVE GROUND - STABLE	N 651052.02 E 1656142.44	74+53.71 110.71' LEFT
102	1" O.D. IRON PIPE FOUND 3.0' ABOVE GROUND - STABLE	N 650990.72 E 1656261.49	75+39.03 213.91' LEFT

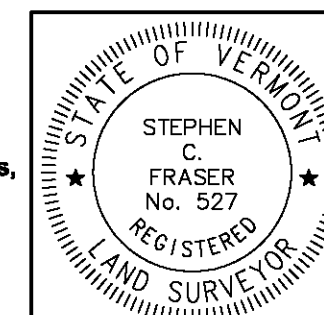
CURVE	CHORD BEARING	CHORD DISTANCE	RADIUS	LENGTH
33-34	S 23° 04' 10" E	324.71'	871.73'	326.62'
35-36	S 28° 32' 11" E	317.11'	557.56'	321.55'
57-58	N 28° 32' 35" W	345.13'	607.06'	349.96'
59-60	N 23° 04' 10" W	306.27'	822.23'	308.07'
70+07.29-73+24.63	S 23° 04' 10" E	315.49'	846.98'	317.34'
75+63.13-78+98.88	S 28° 32' 24" E	331.12'	582.31'	335.75'



I certify that this plat is based on information abstracted from documents, parcel evidence, and physical evidence. The survey work identified hereon is consistent with this information.

I certify that this plat meets the requirements of 27 VSA Section 1403 and complies with Vermont Board of Land Surveyors Rules, Part 5.4 and 5.5, adopted under 26 VSA Section 2544(a).

Signed: *Stephen C. Fraser*
Stephen C. Fraser, L.S. #527



STATUTORY RESURVEY
STATE OF VERMONT
VERMONT ROUTE 214
EAST MONTPELIER - MARSHFIELD - PLAINFIELD
WASHINGTON COUNTY, VERMONT

SCALE: 1" = 40' PLAT COMPILATION DATE: 4-23-2012
R.O.W. WIDTH = 49.50' DRAWN BY: JMR SHEET 11 OF 15

Vermont Survey and Engineering, Inc.
79 River Street, Montpelier, Vermont
(802) 229-9138 ~ info@vermontsurvey.com