

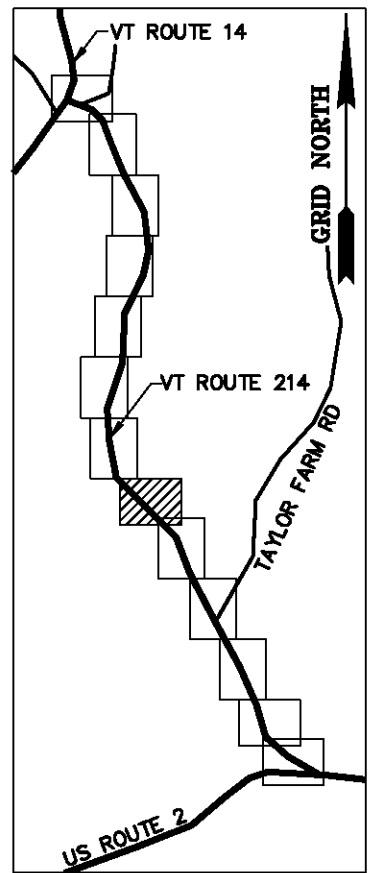
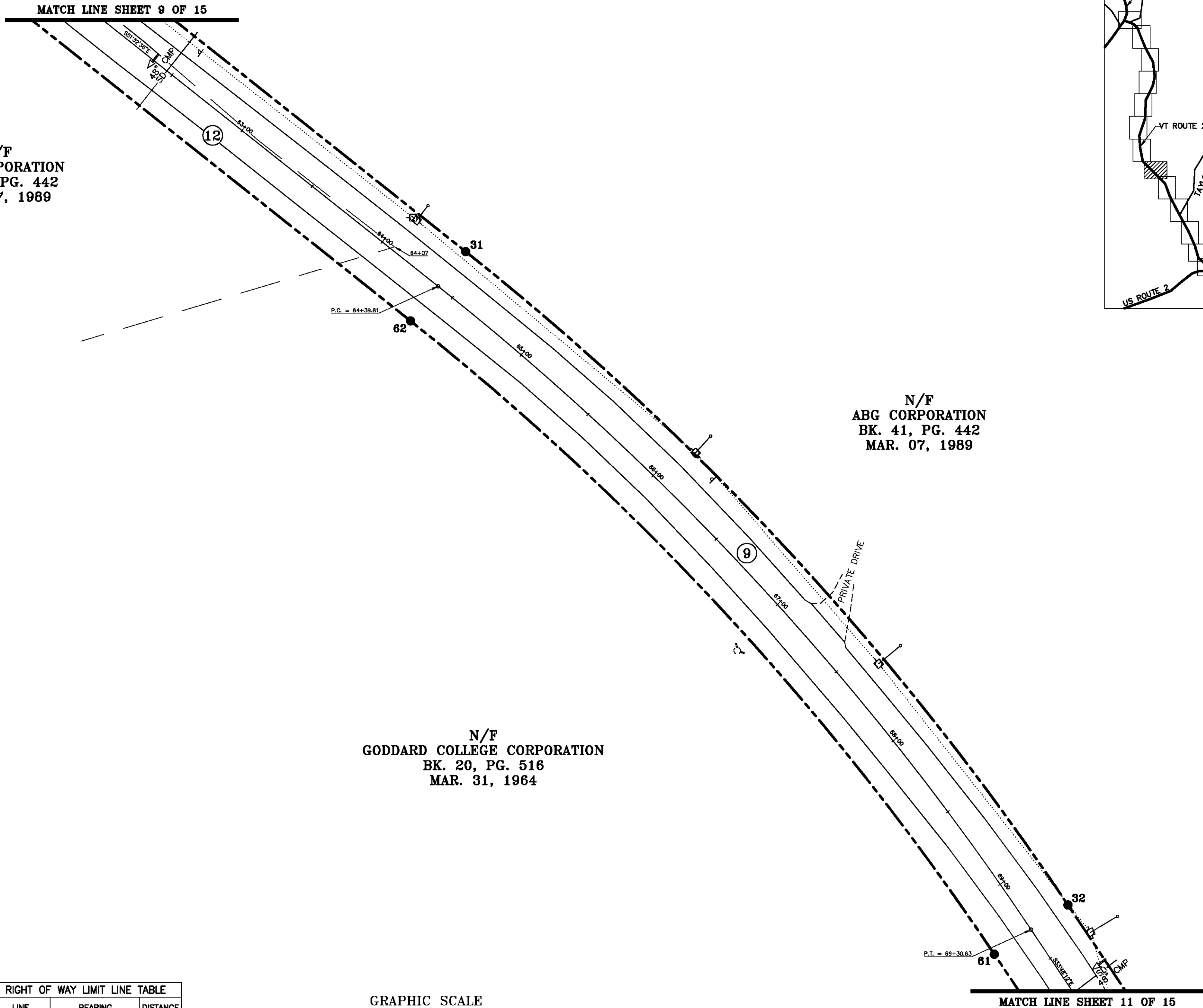
ORIGINAL DRAWING—INK ON POLYESTER FILM MEETING THE REQUIREMENTS OF 27 VSA 1403

NAD 83(CORS94)
BASIS OF BEARINGS & COORDINATES
 Datum: Horizontal - NAD 83(CORS96) SPC (4400 VT) sFT

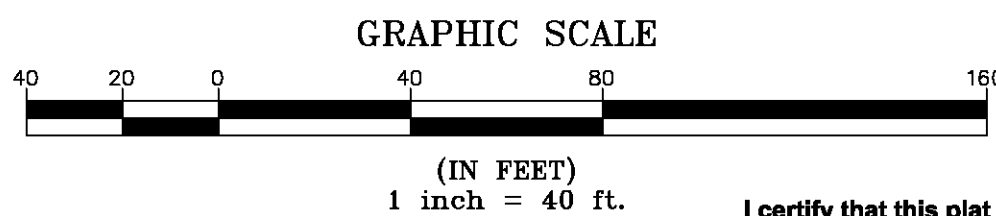
N/F
 ABG CORPORATION
 BK. 41, PG. 442
 MAR. 07, 1989

N/F
 ABG CORPORATION
 BK. 41, PG. 442
 MAR. 07, 1989

N/F
 GODDARD COLLEGE CORPORATION
 BK. 20, PG. 516
 MAR. 31, 1964



LINE	BEARING	DISTANCE
31-32	SEE CURVE TABLE	
32-33	S 33° 48' 12" E	76.66'
60-61	N 33° 48' 12" W	76.66'
61-62	SEE CURVE TABLE	
62-63	N 51° 32' 36" W	453.30'



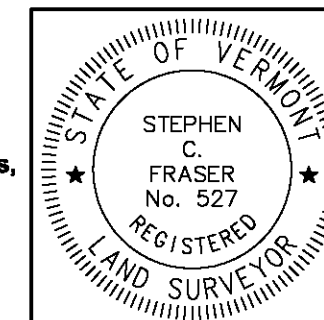
CURVE	CHORD BEARING	CHORD DISTANCE	RADIUS	LENGTH
31-32	S 42° 40' 24" E	496.50'	1610.00'	498.49'
61-62	N 42° 40' 24" W	481.23'	1560.50'	483.16'
64+39.81-69+30.63	S 42° 40' 24" E	488.87'	1585.25'	490.82'

MON. NO.	DESCRIPTION	COORDINATE	STATION
31	5/8" DIA. IRON ROD SET FLUSH (SEE DETAILS ON SHEET 15)	N 651887.24 E 1655524.47	64+39.81 24.75' LEFT
32	5/8" DIA. IRON ROD SET FLUSH (SEE DETAILS ON SHEET 15)	N 651522.20 E 1655861.01	69+30.63 24.75' LEFT
61	5/8" DIA. IRON ROD SET FLUSH (SEE DETAILS ON SHEET 15)	N 651494.66 E 1655819.87	69+30.63 24.75' RIGHT
62	5/8" DIA. IRON ROD SET FLUSH (SEE DETAILS ON SHEET 15)	N 651848.48 E 1655493.69	64+39.81 24.75' RIGHT

I certify that this plat is based on information abstracted from documents, parcel evidence, and physical evidence. The survey work identified hereon is consistent with this information.

I certify that this plat meets the requirements of 27 VSA Section 1403 and complies with Vermont Board of Land Surveyors Rules, Part 5.4 and 5.5, adopted under 26 VSA Section 2544(a).

Signed: *Stephen C. Fraser*
 Stephen C. Fraser, L.S. #527



STATUTORY RESURVEY
STATE OF VERMONT
VERMONT ROUTE 214
 EAST MONTPELIER - MARSHFIELD - PLAINFIELD
 WASHINGTON COUNTY, VERMONT

SCALE: 1" = 40'	PLAT COMPILATION DATE: 4-23-2012
R.O.W. WIDTH = 49.50'	DRAWN BY: JMR SHEET 10 OF 15

Vermont Survey and Engineering, Inc.
 79 River Street, Montpelier, Vermont
 (802) 229-9138 ~ info@vermontsurvey.com