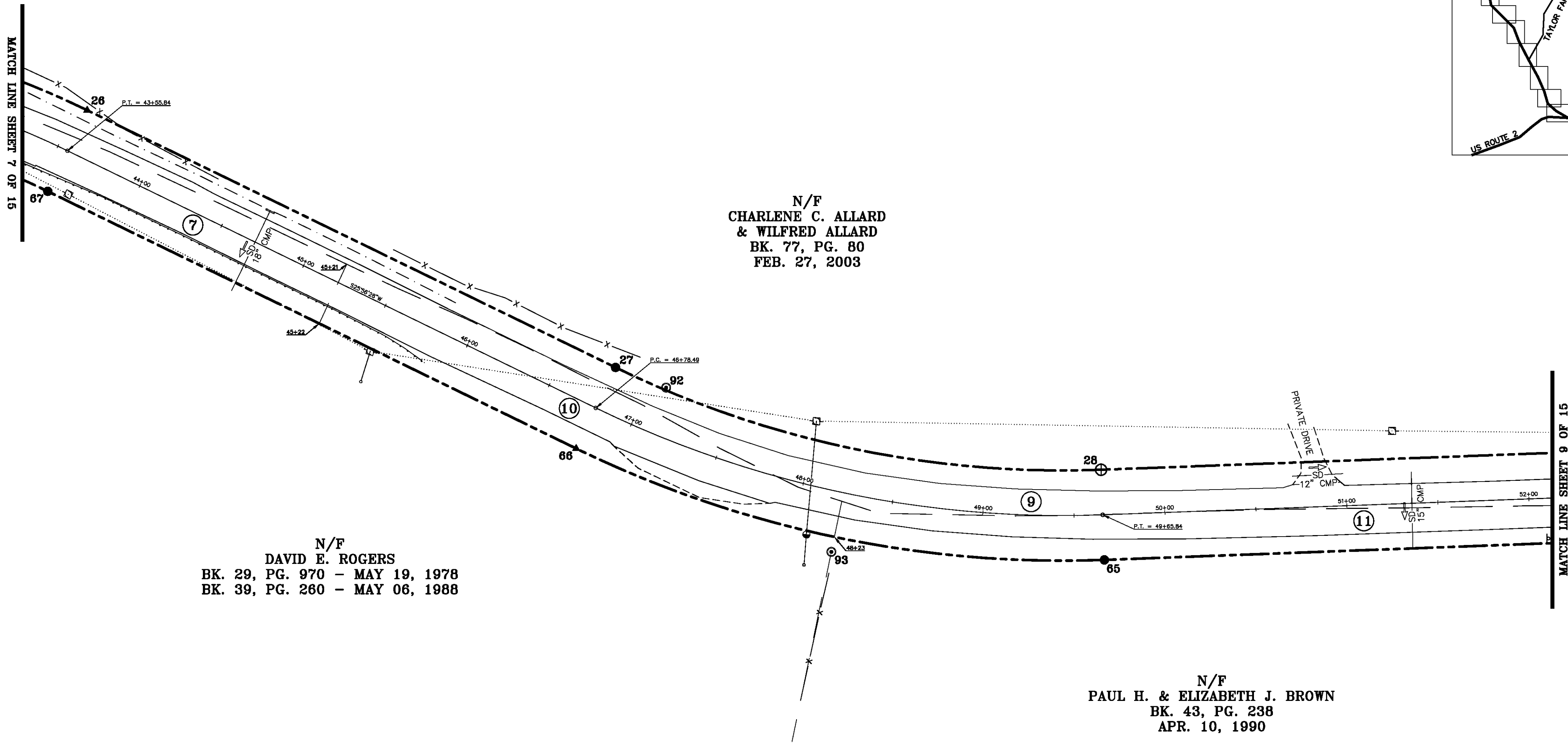
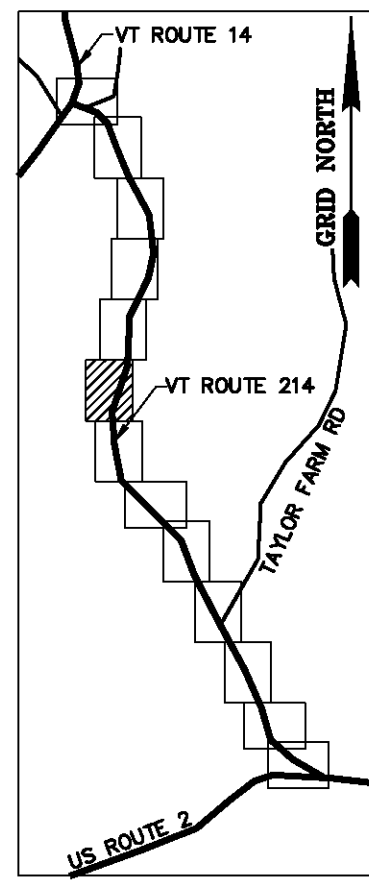




BASIS OF BEARINGS & COORDINATES
 Datum: Horizontal - NAD 83(CORS96) SPC (4400 VT) sFT



N/F
 CHARLENE C. ALLARD
 & WILFRED ALLARD
 BK. 77, PG. 80
 FEB. 27, 2003

N/F
 DAVID E. ROGERS
 BK. 29, PG. 970 - MAY 19, 1978
 BK. 39, PG. 260 - MAY 06, 1988

N/F
 PAUL H. & ELIZABETH J. BROWN
 BK. 43, PG. 238
 APR. 10, 1990

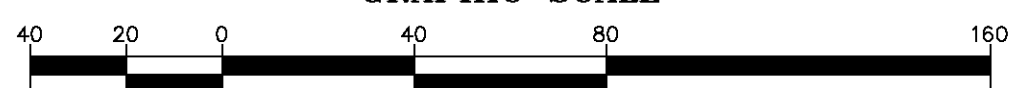
ORIGINAL DRAWING-INK ON POLYESTER FILM MEETING THE REQUIREMENTS OF 27 VSA 1403

MONUMENT DETAIL TABLE			
MON. NO.	DESCRIPTION	COORDINATE	STATION
26	UNMONUMENTED POINT	N 653861.54 E 1655141.90	43+55.84 24.75' LEFT
27	5/8" DIA. IRON ROD SET FLUSH (SEE DETAILS ON SHEET 15)	N 653371.41 E 1655000.76	46+78.49 24.75' LEFT
28	2 3/8" DIA. ALUMINUM MONUMENT SET FLUSH (SEE DETAILS ON SHEET 15)	N 653104.79 E 1654944.57	49+65.84 24.75' LEFT
65	5/8" DIA. IRON ROD SET FLUSH (SEE DETAILS ON SHEET 15)	N 653102.94 E 1654895.11	49+65.84 24.75' RIGHT
66	UNMONUMENTED POINT	N 653393.06 E 1654956.24	46+78.49 24.75' RIGHT
67	5/8" DIA. IRON ROD SET FLUSH (SEE DETAILS ON SHEET 15)	N 653683.20 E 1655097.39	43+55.84 24.75' RIGHT
92	5/8" DIA. IRON ROD FOUND 0.8" ABOVE GROUND - STABLE	N 653343.63 E 1654989.67	47+09.73 26.14' LEFT
93	5/8" DIA. IRON ROD FOUND 0.7" ABOVE GROUND - STABLE	N 653252.89 E 1654899.54	48+22.74 33.07' RIGHT

RIGHT OF WAY LIMIT LINE TABLE		
LINE	BEARING	DISTANCE
26-27	S 25° 56' 28" W	322.65'
27-28	SEE CURVE TABLE	
65-66	SEE CURVE TABLE	
66-67	N 25° 56' 28" E	322.65'

CURVE TABLE				
CURVE	CHORD BEARING	CHORD DISTANCE	RADIUS	LENGTH
27-28	S 11° 53' 59" W	272.47'	561.51'	275.22'
65-66	N 11° 53' 59" E	296.49'	611.01'	299.48'
46+78.49-49+65.84	S 11° 53' 59" W	284.48'	586.26'	287.35'

GRAPHIC SCALE

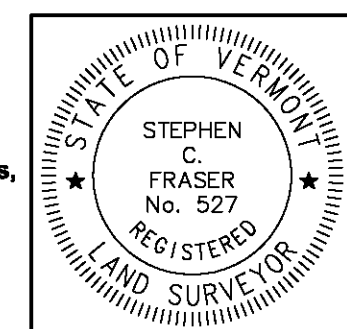


(IN FEET)
 1 inch = 40 ft.

I certify that this plat is based on information abstracted from documents, parol evidence, and physical evidence. The survey work identified hereon is consistent with this information.

I certify that this plat meets the requirements of 27 VSA Section 1403 and complies with Vermont Board of Land Surveyors Rules, Part 5.4 and 5.5, adopted under 26 VSA Section 2544(a).

Signed: *Stephen C. Fraser*
 Stephen C. Fraser, L.S. #527



STATUTORY RESURVEY
STATE OF VERMONT
VERMONT ROUTE 214
 EAST MONTPELIER - MARSHFIELD - PLAINFIELD
 WASHINGTON COUNTY, VERMONT

SCALE: 1" = 40'	PLAT COMPILATION DATE: 4-23-2012
R.O.W. WIDTH = 49.50'	DRAWN BY: JMR SHEET 8 OF 15

Vermont Survey and Engineering, Inc.
 79 River Street, Montpelier, Vermont
 (802) 229-9138 ~ info@vermontsurvey.com