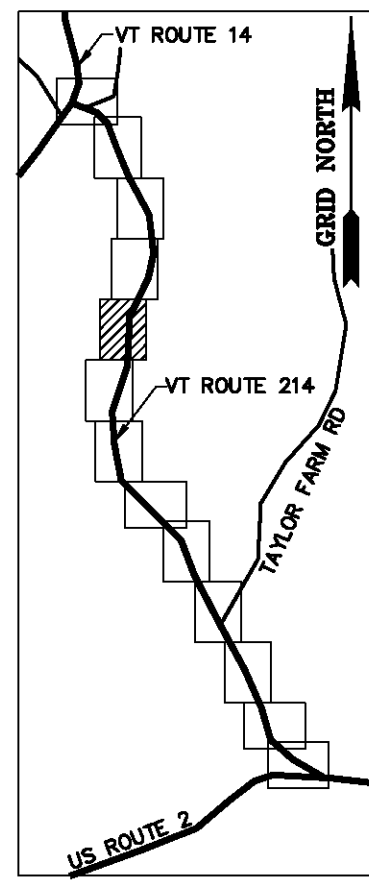
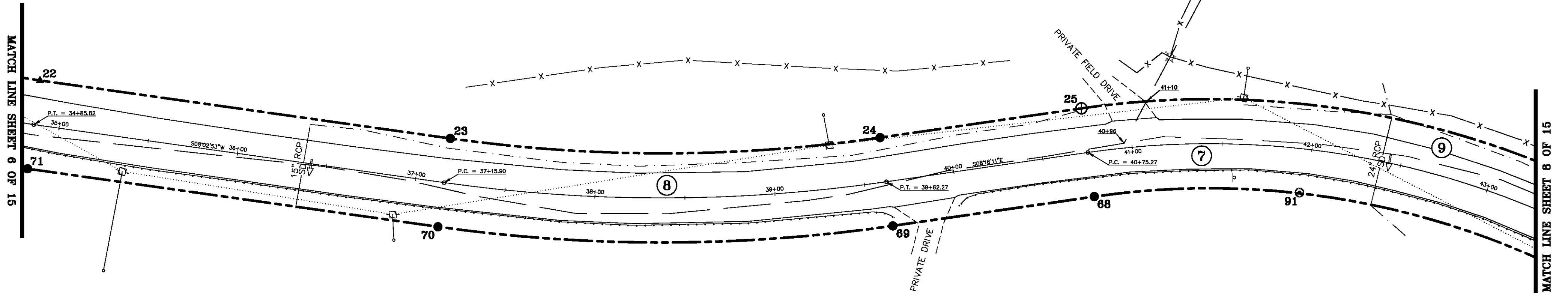


BASIS OF BEARINGS & COORDINATES  
Datum: Horizontal - NAD 83(CORS96) SPC (4400 VT) sFT



N/F  
ALAN B. GOLDMAN  
BK. 35, PG. 326  
JUL. 11, 1986

N/F  
CHARLENE C. ALLARD  
& WILFRED ALLARD  
BK. 77, PG. 80  
FEB. 27, 2003



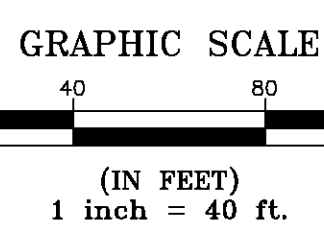
N/F  
DAVID E. ROGERS  
BK. 29, PG. 970 - MAY 19, 1978  
BK. 39, PG. 260 - MAY 06, 1988

ORIGINAL DRAWING-INK ON POLYESTER FILM MEETING THE REQUIREMENTS OF 27 VSA 1403

MONUMENT DETAIL TABLE			
MON. NO.	DESCRIPTION	COORDINATE	STATION
22	UNMONUMENTED POINT	N 654527.22 E 1655202.09	34+85.82 24.75' LEFT
23	5/8" DIA. IRON ROD SET FLUSH (SEE DETAILS ON SHEET 15)	N 654299.41 E 1655169.88	37+15.90 24.75' LEFT
24	5/8" DIA. IRON ROD SET FLUSH (SEE DETAILS ON SHEET 15)	N 654060.90 E 1655170.34	39+62.27 24.75' LEFT
25	2 3/8" DIA. ALUMINUM MONUMENT SET FLUSH (SEE DETAILS ON SHEET 15)	N 653949.08 E 1655186.59	40+75.27 24.75' LEFT
68	5/8" DIA. IRON ROD SET FLUSH (SEE DETAILS ON SHEET 15)	N 653941.96 E 1655137.61	40+75.27 24.75' RIGHT
69	5/8" DIA. IRON ROD SET FLUSH (SEE DETAILS ON SHEET 15)	N 654053.78 E 1655121.36	39+62.27 24.75' RIGHT
70	5/8" DIA. IRON ROD SET FLUSH (SEE DETAILS ON SHEET 15)	N 654306.34 E 1655120.87	37+15.90 24.75' RIGHT
71	5/8" DIA. IRON ROD SET FLUSH (SEE DETAILS ON SHEET 15)	N 654534.15 E 1655139.88	34+85.82 24.31' RIGHT
91	5/8" DIA. IRON ROD FOUND 0.3' ABOVE GROUND WITH CAP MARKED "W. R. CHASE RLS VERMONT" - STABLE	N 653828.06 E 1655139.88	41+95.79 24.31' RIGHT

RIGHT OF WAY LIMIT LINE TABLE		
LINE	BEARING	DISTANCE
22-23	S 08° 02' 53" W	230.08'
23-24	SEE CURVE TABLE	
24-25	S 08° 16' 11" E	113.00'
25-26	SEE CURVE TABLE	
67-68	SEE CURVE TABLE	
68-69	N 08° 16' 11" W	113.00'
69-70	SEE CURVE TABLE	
70-71	N 08° 02' 53" E	230.08'

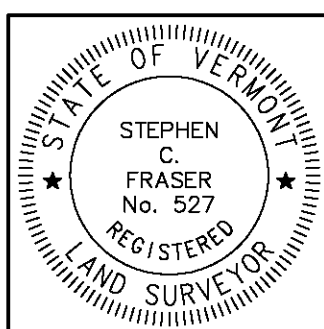
CURVE TABLE				
CURVE	CHORD BEARING	CHORD DISTANCE	RADIUS	LENGTH
23-24	S 00° 06' 39" E	238.52'	840.32'	239.32'
25-26	S 08° 50' 09" W	290.99'	494.65'	295.35'
67-68	N 08° 50' 09" E	261.87'	445.15'	265.80'
69-70	N 00° 06' 39" W	252.57'	889.82'	253.42'
37+15.90-39+62.27	S 00° 06' 39" E	245.54'	865.07'	246.37'
40+75.27-43+55.84	S 08° 50' 09" W	276.43'	469.90'	280.58'



I certify that this plat is based on information abstracted from documents, parcel evidence, and physical evidence. The survey work identified hereon is consistent with this information.

I certify that this plat meets the requirements of 27 VSA Section 1403 and complies with Vermont Board of Land Surveyors Rules, Part 5.4 and 5.5, adopted under 26 VSA Section 2544(a).

Signed: *Stephen C. Fraser*  
Stephen C. Fraser, L.S. #527



**STATUTORY RESURVEY**  
**STATE OF VERMONT**  
**VERMONT ROUTE 214**  
EAST MONTPELIER - MARSHFIELD - PLAINFIELD  
WASHINGTON COUNTY, VERMONT

SCALE: 1" = 40'	PLAT COMPILATION DATE: 4-23-2012
R.O.W. WIDTH = 49.50'	DRAWN BY: JMR SHEET 7 OF 15

**Vermont Survey and Engineering, Inc.**  
79 River Street, Montpelier, Vermont  
(802) 229-9138 ~ info@vermontsurvey.com