



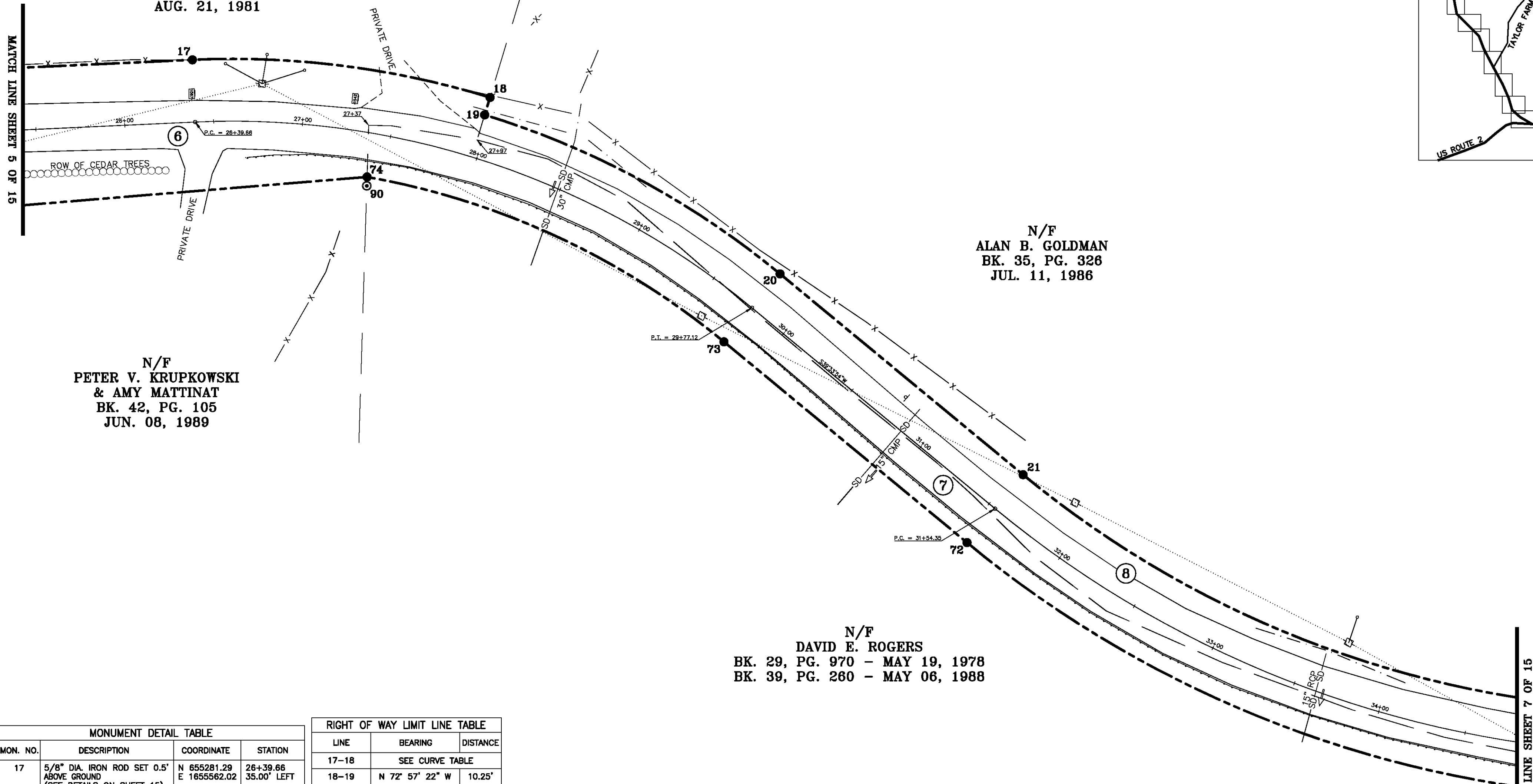
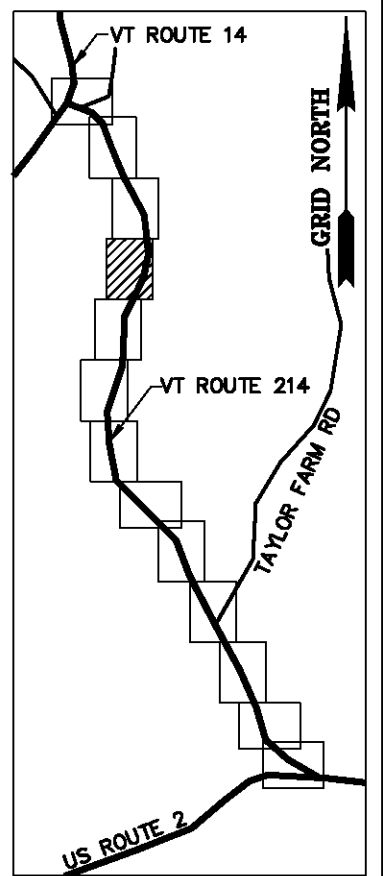
**BASIS OF BEARINGS & COORDINATES**  
 Datum: Horizontal - NAD 83(CORS96) SPC (4400 VT) sFT

N/F  
**DAVID A. PICKEL &  
 FRANCES M. PICKEL**  
 BK. 29, PG. 458  
 AUG. 21, 1981

N/F  
**PETER V. KRUPKOWSKI  
 & AMY MATTINAT**  
 BK. 42, PG. 105  
 JUN. 08, 1989

N/F  
**ALAN B. GOLDMAN**  
 BK. 35, PG. 326  
 JUL. 11, 1986

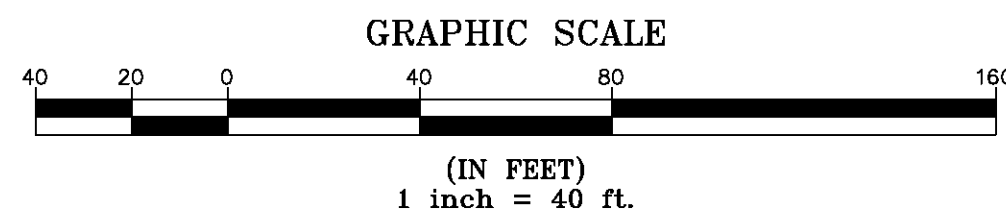
N/F  
**DAVID E. ROGERS**  
 BK. 29, PG. 970 - MAY 19, 1978  
 BK. 39, PG. 260 - MAY 06, 1988



| MONUMENT DETAIL TABLE |  |                             |                          |
|-----------------------|--|-----------------------------|--------------------------|
| MON. NO.              | DESCRIPTION  | COORDINATE                  | STATION                  |
| 17                    | 5/8" DIA. IRON ROD SET 0.5' ABOVE GROUND (SEE DETAILS ON SHEET 15) | N 655281.29<br>E 1655562.02 | 26+39.66<br>35.00' LEFT  |
| 18                    | 5/8" DIA. IRON ROD SET FLUSH (SEE DETAILS ON SHEET 15)             | N 655114.03<br>E 1655540.88 | 27+97.06<br>35.00' LEFT  |
| 19                    | 5/8" DIA. IRON ROD SET FLUSH (SEE DETAILS ON SHEET 15)             | N 655117.03<br>E 1655531.08 | 27+97.06<br>24.75' LEFT  |
| 20                    | 5/8" DIA. IRON ROD SET FLUSH (SEE DETAILS ON SHEET 15)             | N 654951.01<br>E 1655441.67 | 29+77.12<br>24.75' LEFT  |
| 21                    | 5/8" DIA. IRON ROD SET FLUSH (SEE DETAILS ON SHEET 15)             | N 654814.38<br>E 1655328.78 | 31+54.35<br>24.75' LEFT  |
| 72                    | 5/8" DIA. IRON ROD SET 0.5' ABOVE GROUND (SEE DETAILS ON SHEET 15) | N 654845.91<br>E 1655290.63 | 31+54.35<br>24.75' RIGHT |
| 73                    | 5/8" DIA. IRON ROD SET FLUSH (SEE DETAILS ON SHEET 15)             | N 654982.54<br>E 1655403.51 | 29+77.12<br>24.75' RIGHT |
| 74                    | 5/8" DIA. IRON ROD SET 0.5' ABOVE GROUND (SEE DETAILS ON SHEET 15) | N 655183.12<br>E 1655496.17 | 27+40.96<br>24.75' RIGHT |
| 90                    | 3/4" DIA. IRON ROD FOUND 1.3' ABOVE GROUND - UNSTABLE              | N 655183.27<br>E 1655491.17 | 27+41.71<br>29.70' RIGHT |

| RIGHT OF WAY LIMIT LINE TABLE |                 |          |
|-------------------------------|-----------------|----------|
| LINE                          | BEARING         | DISTANCE |
| 17-18                         | SEE CURVE TABLE |          |
| 18-19                         | N 72° 57' 22" W | 10.25'   |
| 19-20                         | SEE CURVE TABLE |          |
| 20-21                         | S 39° 33' 54" W | 177.23'  |
| 21-22                         | SEE CURVE TABLE |          |
| 71-72                         | SEE CURVE TABLE |          |
| 72-73                         | N 39° 33' 54" E | 177.23'  |
| 73-74                         | SEE CURVE TABLE |          |

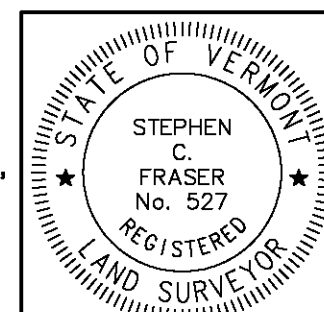
| CURVE TABLE       |                 |                |         |         |
|-------------------|-----------------|----------------|---------|---------|
| CURVE             | CHORD BEARING   | CHORD DISTANCE | RADIUS  | LENGTH  |
| 17-18             | S 07° 12' 02" W | 168.59'        | 493.10' | 169.42' |
| 19-20             | S 28° 18' 16" W | 188.57'        | 482.85' | 189.79' |
| 21-22             | S 23° 48' 24" W | 313.87'        | 577.85' | 317.86' |
| 71-72             | N 23° 48' 24" E | 340.75'        | 627.35' | 345.09' |
| 73-74             | N 24° 47' 45" E | 220.94'        | 433.35' | 223.41' |
| 26+39.66-29+77.12 | S 18° 27' 41" W | 329.88'        | 458.10' | 337.46' |
| 31+54.35-34+85.82 | S 23° 48' 24" W | 327.31'        | 602.60' | 331.47' |



I certify that this plat is based on information abstracted from documents, parcel evidence, and physical evidence. The survey work identified hereon is consistent with this information.

I certify that this plat meets the requirements of 27 VSA Section 1403 and complies with Vermont Board of Land Surveyors Rules, Part 5.4 and 5.5, adopted under 26 VSA Section 2544(a).

Signed: *Stephen C. Fraser*  
 Stephen C. Fraser, L.S. #527



**STATUTORY RESURVEY**  
**STATE OF VERMONT**  
**VERMONT ROUTE 214**  
 EAST MONTPELIER - MARSHFIELD - PLAINFIELD  
 WASHINGTON COUNTY, VERMONT

SCALE: 1" = 40'      PLAT COMPILATION DATE: 4-23-2012  
 R.O.W. WIDTH = VARIES      DRAWN BY: JMR      SHEET 6 OF 15

**Vermont Survey and Engineering, Inc.**  
 79 River Street, Montpelier, Vermont  
 (802) 229-9138 ~ info@vermontsurvey.com

ORIGINAL DRAWING-INK ON POLYESTER FILM MEETING THE REQUIREMENTS OF 27 VSA 1403

MATCH LINE SHEET 5 OF 15

MATCH LINE SHEET 7 OF 15