



BASIS OF BEARINGS & COORDINATES  
Datum: Horizontal - NAD 83(CORS96) SPC (4400 VT) sFT

N/F  
DAVID A. PICKEL &  
FRANCES M. PICKEL  
BK. 29, PG. 458  
AUG. 21, 1981

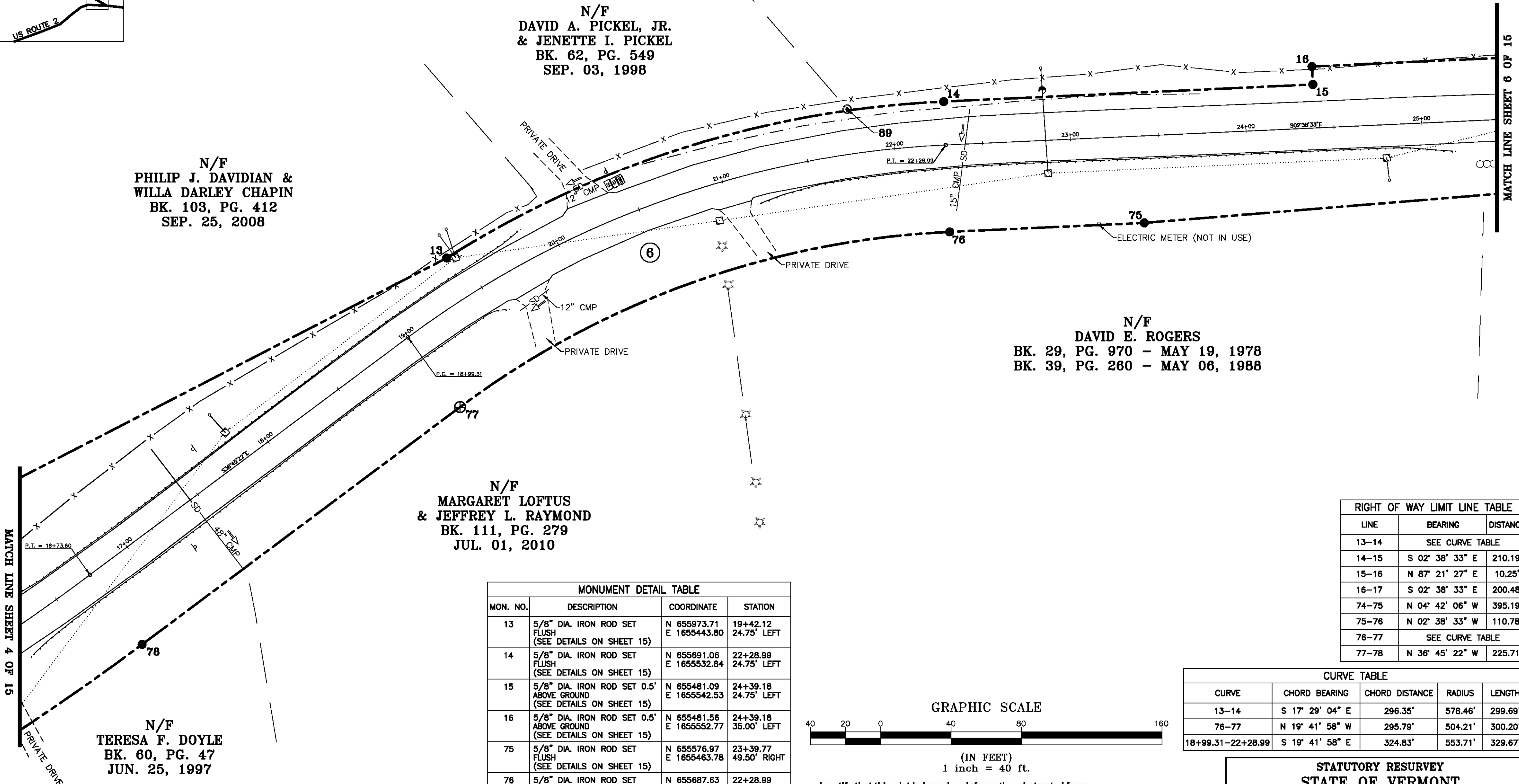
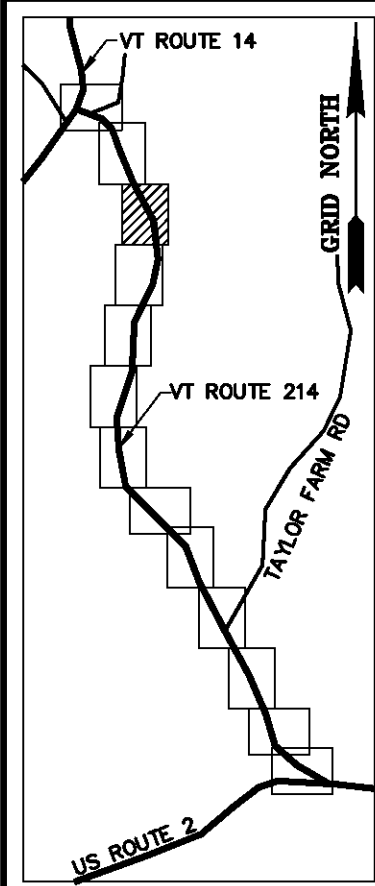
N/F  
DAVID A. PICKEL, JR.  
& JENETTE I. PICKEL  
BK. 62, PG. 549  
SEP. 03, 1998

N/F  
PHILIP J. DAVIDIAN &  
WILLA DARLEY CHAPIN  
BK. 103, PG. 412  
SEP. 25, 2008

N/F  
DAVID E. ROGERS  
BK. 29, PG. 970 - MAY 19, 1978  
BK. 39, PG. 260 - MAY 06, 1988

N/F  
MARGARET LOFTUS  
& JEFFREY L. RAYMOND  
BK. 111, PG. 279  
JUL. 01, 2010

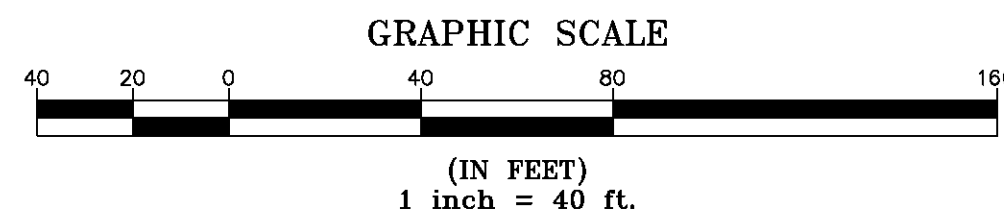
N/F  
TERESA F. DOYLE  
BK. 60, PG. 47  
JUN. 25, 1997



LINE	BEARING	DISTANCE
13-14	SEE CURVE TABLE	
14-15	S 02° 38' 33" E	210.19'
15-16	N 87° 21' 27" E	10.25'
16-17	S 02° 38' 33" E	200.48'
74-75	N 04° 42' 06" W	395.19'
75-76	N 02° 38' 33" W	110.78'
76-77	SEE CURVE TABLE	
77-78	N 36° 45' 22" W	225.71'

CURVE	CHORD BEARING	CHORD DISTANCE	RADIUS	LENGTH
13-14	S 17° 29' 04" E	296.35'	578.46'	299.69'
76-77	N 19° 41' 58" W	295.79'	504.21'	300.20'
18+99.31-22+28.99	S 19° 41' 58" E	324.83'	553.71'	329.67'

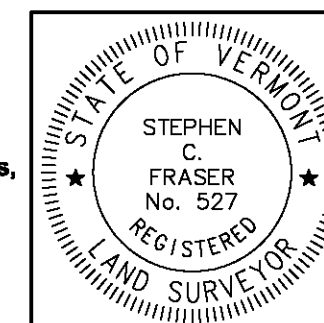
MONUMENT DETAIL TABLE			
MON. NO.	DESCRIPTION	COORDINATE	STATION
13	5/8" DIA. IRON ROD SET FLUSH (SEE DETAILS ON SHEET 15)	N 655973.71 E 1655443.80	19+42.12 24.75' LEFT
14	5/8" DIA. IRON ROD SET FLUSH (SEE DETAILS ON SHEET 15)	N 655691.06 E 1655532.84	22+28.99 24.75' LEFT
15	5/8" DIA. IRON ROD SET 0.5' ABOVE GROUND (SEE DETAILS ON SHEET 15)	N 655481.09 E 1655542.53	24+39.18 24.75' LEFT
16	5/8" DIA. IRON ROD SET 0.5' ABOVE GROUND (SEE DETAILS ON SHEET 15)	N 655481.56 E 1655552.77	24+39.18 35.00' LEFT
75	5/8" DIA. IRON ROD SET FLUSH (SEE DETAILS ON SHEET 15)	N 655576.97 E 1655463.78	23+39.77 49.50' RIGHT
76	5/8" DIA. IRON ROD SET FLUSH (SEE DETAILS ON SHEET 15)	N 655687.63 E 1655458.87	22+28.99 49.50' RIGHT
77	2 3/8" DIA. ALUMINUM MONUMENT SET FLUSH (SEE DETAILS ON SHEET 15)	N 655966.11 E 1655358.97	18+99.31 49.50' RIGHT
78	5/8" DIA. IRON ROD SET 0.5' ABOVE GROUND (SEE DETAILS ON SHEET 15)	N 656146.95 E 1655223.90	16+73.60 49.50' RIGHT
89	5/8" DIA. IRON ROD FOUND 0.5' ABOVE GROUND WITH CAP MARKED "W LAWRENCE BARRE VT" - STABLE	N 655745.94 E 1655528.51	21+76.31 25.58' LEFT



I certify that this plat is based on information abstracted from documents, parcel evidence, and physical evidence. The survey work identified hereon is consistent with this information.

I certify that this plat meets the requirements of 27 VSA Section 1403 and complies with Vermont Board of Land Surveyors Rules, Part 5.4 and 5.5, adopted under 26 VSA Section 2544(a).

Signed: *Stephen C. Fraser*  
Stephen C. Fraser, L.S. #527



STATUTORY RESURVEY  
STATE OF VERMONT  
VERMONT ROUTE 214  
EAST WAMPETLIER - MARSHFIELD - PLAINFIELD  
WASHINGTON COUNTY, VERMONT

SCALE: 1" = 40'      PLAT COMPILATION DATE: 4-23-2012  
R.O.W. WIDTH = VARIES      DRAWN BY: JMR      SHEET 5 OF 15

Vermont Survey and Engineering, Inc.  
79 River Street, Montpelier, Vermont  
(802) 229-9138 ~ info@vermontsurvey.com

ORIGINAL DRAWING-INK ON POLYESTER FILM MEETING THE REQUIREMENTS OF 27 VSA 1403