

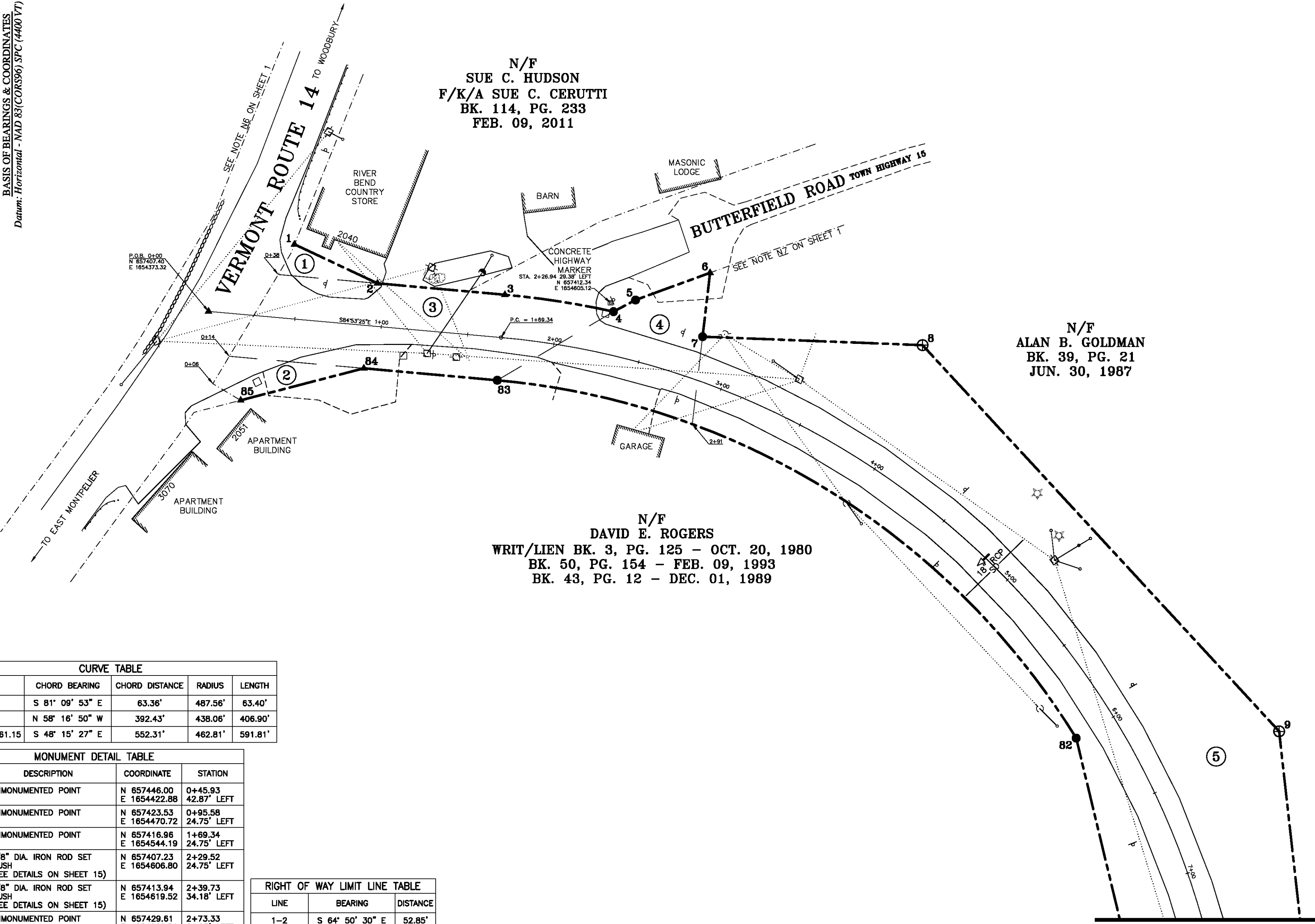
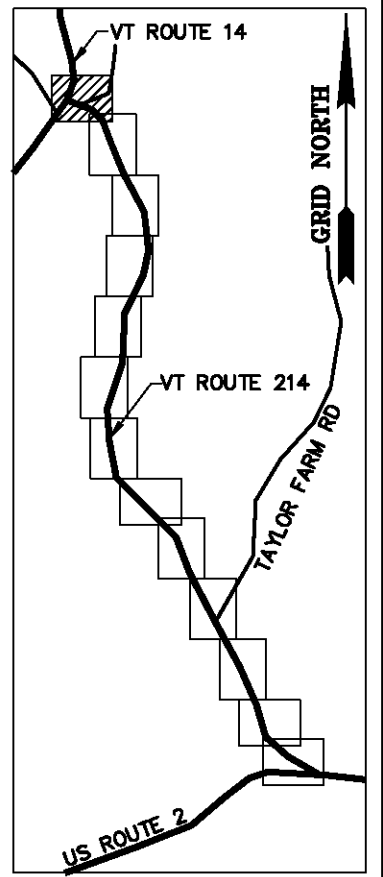
ORIGINAL DRAWING-INK ON POLYESTER FILM MEETING THE REQUIREMENTS OF 27 VSA 1403

NAD 83 (2011)
BASIS OF BEARINGS & COORDINATES
 Datum: Horizontal - NAD 83 (CORS96) SPC (4400 VT) sFT

N/F
 SUE C. HUDSON
 F/K/A SUE C. CERUTTI
 BK. 114, PG. 233
 FEB. 09, 2011

N/F
 ALAN B. GOLDMAN
 BK. 39, PG. 21
 JUN. 30, 1987

N/F
 DAVID E. ROGERS
 WRIT/LIEN BK. 3, PG. 125 - OCT. 20, 1980
 BK. 50, PG. 154 - FEB. 09, 1993
 BK. 43, PG. 12 - DEC. 01, 1989

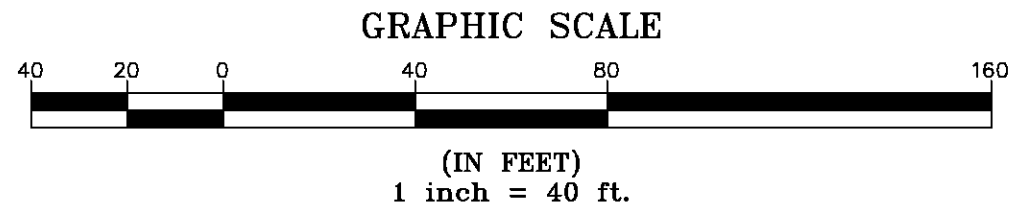


CURVE TABLE				
CURVE	CHORD BEARING	CHORD DISTANCE	RADIUS	LENGTH
3-4	S 81° 09' 53" E	63.36'	487.56'	63.40'
82-83	N 58° 16' 50" W	392.43'	438.06'	406.90'
1+69.34-7+61.15	S 48° 15' 27" E	552.31'	462.81'	591.81'

MONUMENT DETAIL TABLE			
MON. NO.	DESCRIPTION	COORDINATE	STATION
1	UNMONUMENTED POINT	N 657446.00 E 1654422.88	0+45.93 42.87' LEFT
2	UNMONUMENTED POINT	N 657423.53 E 1654470.72	0+95.58 24.75' LEFT
3	UNMONUMENTED POINT	N 657416.96 E 1654544.19	1+69.34 24.75' LEFT
4	5/8" DIA. IRON ROD SET FLUSH (SEE DETAILS ON SHEET 15)	N 657407.23 E 1654606.80	2+29.52 24.75' LEFT
5	5/8" DIA. IRON ROD SET FLUSH (SEE DETAILS ON SHEET 15)	N 657413.94 E 1654619.52	2+39.73 34.18' LEFT
6	UNMONUMENTED POINT	N 657429.61 E 1654662.51	2+73.33 61.05' LEFT
7	5/8" DIA. IRON ROD SET FLUSH (SEE DETAILS ON SHEET 15)	N 657392.79 E 1654658.18	2+80.21 24.75' LEFT
8	2 3/8" DIA. ALUMINUM MONUMENT SET FLUSH (SEE DETAILS ON SHEET 15)	N 657387.90 E 1654785.01	3+85.78 75.00' LEFT
9	2 3/8" DIA. ALUMINUM MONUMENT SET FLUSH (SEE DETAILS ON SHEET 15)	N 657165.25 E 1654990.60	6+48.87 80.00' LEFT
82	5/8" DIA. IRON ROD SET FLUSH (SEE DETAILS ON SHEET 15)	N 657161.34 E 1654873.59	5+99.23 24.75' RIGHT
83	5/8" DIA. IRON ROD SET FLUSH (SEE DETAILS ON SHEET 15)	N 657367.66 E 1654539.78	1+69.34 24.75' RIGHT
84	UNMONUMENTED POINT	N 657374.54 E 1654462.86	0+92.11 24.75' RIGHT
85	UNMONUMENTED POINT	N 657356.12 E 1654391.88	0+23.05 49.42' RIGHT

RIGHT OF WAY LIMIT LINE TABLE		
LINE	BEARING	DISTANCE
1-2	S 64° 50' 30" E	52.85'
2-3	S 84° 53' 25" E	73.76'
3-4	SEE CURVE TABLE	
4-5	N 62° 12' 45" E	14.38'
5-6	N 69° 58' 13" E	45.76'
6-7	S 06° 42' 44" W	37.07'
7-8	S 87° 47' 27" E	126.93'
8-9	S 42° 43' 03" E	303.05'
9-10	S 06° 22' 05" E	153.93'
81-82	N 13° 31' 51" W	189.07'
82-83	SEE CURVE TABLE	
83-84	N 84° 53' 25" W	77.23'
84-85	S 75° 27' 00" W	73.33'
85-1	ALONG ROAD R.O.W.	112' ±

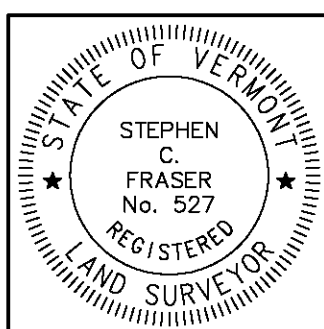
TIE LINE TABLE		
LINE	BEARING	DISTANCE
85-1	N 19° 01' 51" E	95.08'



I certify that this plat is based on information abstracted from documents, parcel evidence, and physical evidence. The survey work identified hereon is consistent with this information.

I certify that this plat meets the requirements of 27 VSA Section 1403 and complies with Vermont Board of Land Surveyors Rules, Part 5.4 and 5.5, adopted under 26 VSA Section 2544(a).

Signed: *Stephen C. Fraser*
 Stephen C. Fraser, L.S. #527



STATUTORY RESURVEY
STATE OF VERMONT
VERMONT ROUTE 214
 EAST MONTPELIER - MARSHFIELD - PLAINFIELD
 WASHINGTON COUNTY, VERMONT

SCALE: 1" = 40' PLAT COMPILATION DATE: 4-23-2012
 R.O.W. WIDTH = VARIES DRAWN BY: JMR SHEET 3 OF 15

Vermont Survey and Engineering, Inc.
 79 River Street, Montpelier, Vermont
 (802) 229-9138 ~ info@vermontsurvey.com

MATCH LINE SHEET 4 OF 15