

Original Drawing – Ink on polymer meeting the requirements of 27 V.S.A. § 1403

GPS CONTROL POINTS

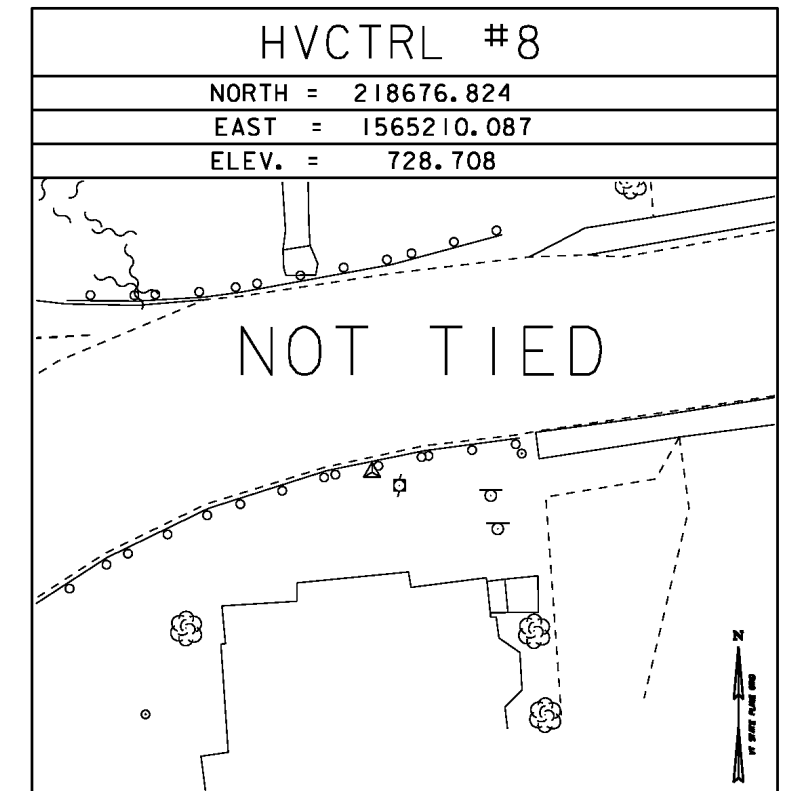
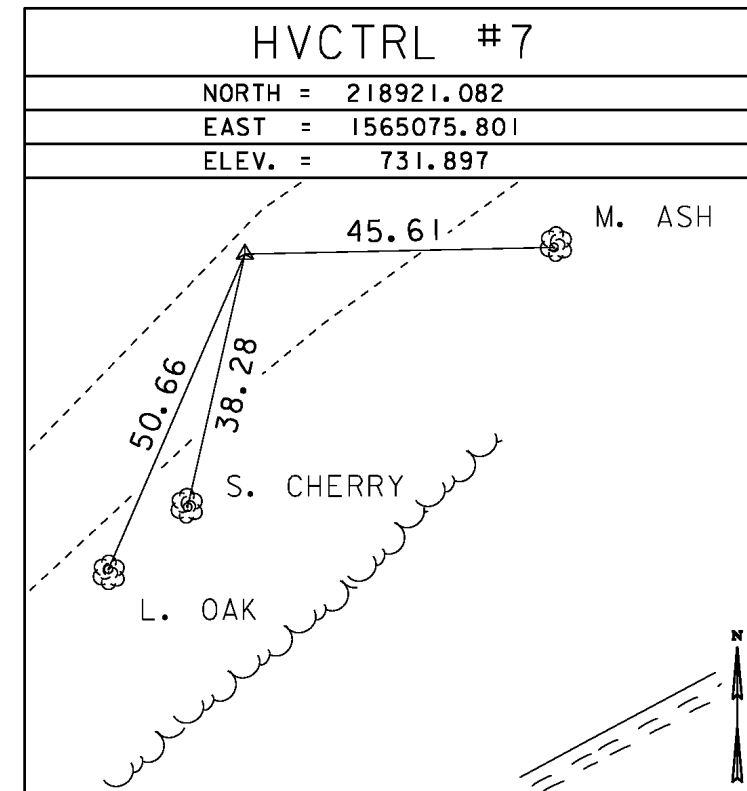
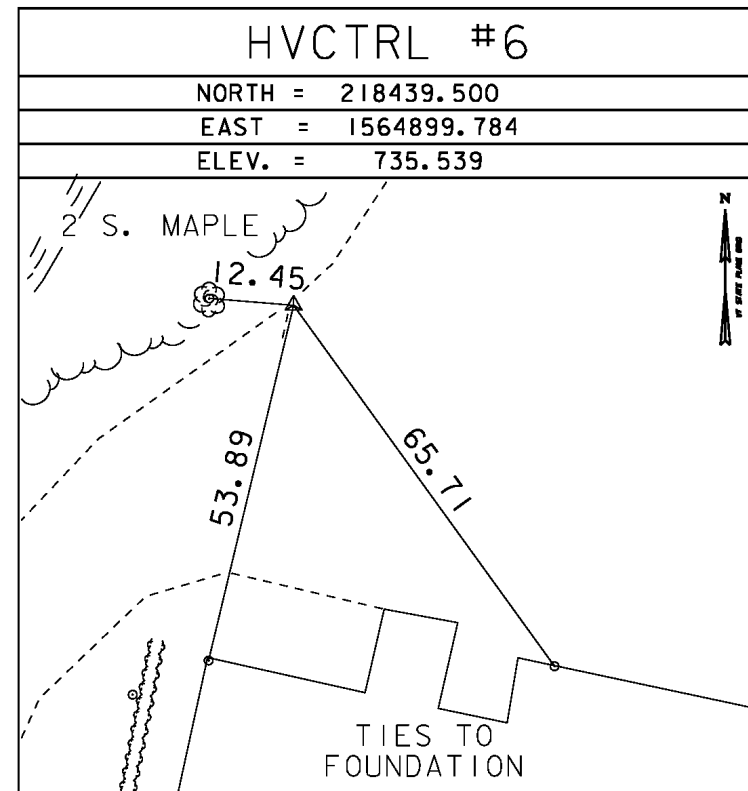
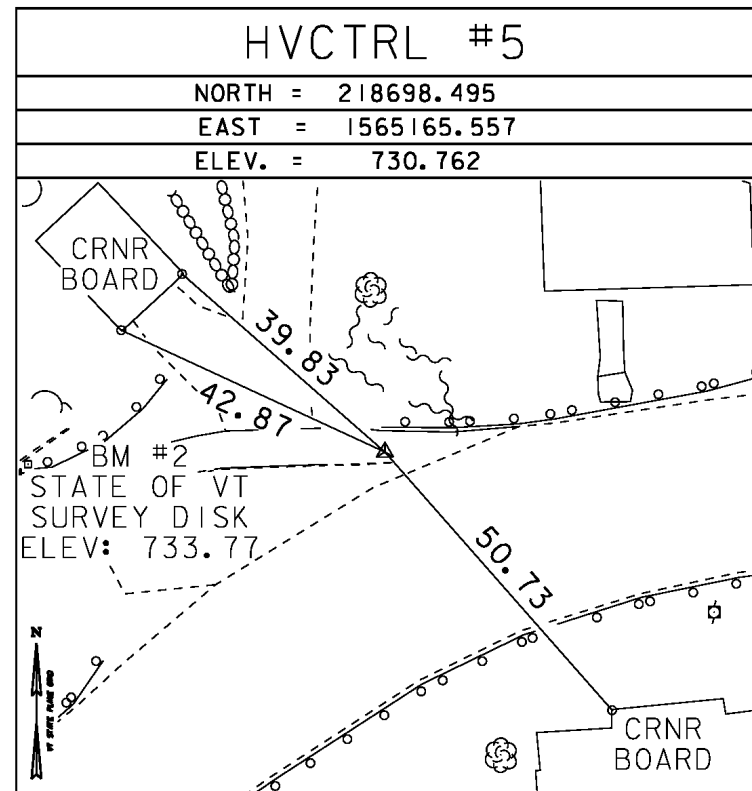
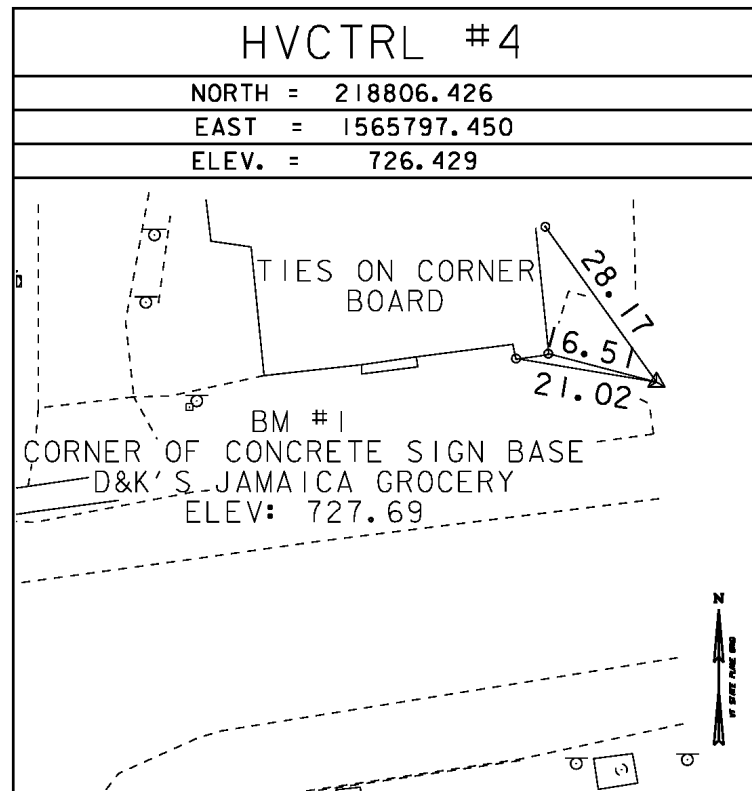
HVCTRL #1
REBAR
NORTH = 217794.372
EAST = 1568067.516
ELEV. = 666.270

GENERAL LOCATION; IT IS ABOUT 84 M (275.6 FT) SOUTH OF HOUSE NO 3327 AND THE INTERSECTION OF MEADOWS ROAD J64 AND VT ROUTE 30, SET IN THE EDGE OF A FIELD.
THE MARK IS A REBAR WITH CAP SET 2 CM (1 INCH) BELOW GROUND SURFACE.
IT IS 5.0 M (16.4 FT) WEST OF AND 0.3 M (1.0 FT) LOWER THAN THE CENTERLINE OF VT ROUTE 30, 0.5 M (1.6 FT) WEST OF THE WEST EDGE OF PAVEMENT OF VT ROUTE 30, 12.6 M (41.3 FT) NORTH OF A 50 MPH METAL SIGN POST, 24.6 M (80.7 FT) NORTH OF POLE NO 5/436/667, 23.0 M (75.5 FT) SOUTH-SOUTHWEST OF POLE 5/435/91/668.

HVCTRL #2
REBAR
NORTH = 218681.832
EAST = 1567457.472
ELEV. = 679.148

GENERAL LOCATION; IT IS ABOUT 0.1 MI (0.2 KM) NORTHWEST FROM THE INTERSECTION OF VT ROUTE 30 AND MEADOWS ROAD J64, SET ON THE SOUTHWEST EDGE OF A SMALL FIELD.
THE MARK IS A REBAR WITH CAP SET 2 CM (1 INCH) BELOW GROUND SURFACE.
IT IS 6.7 M (22.0 FT) NORTHEAST OF AND LEVEL WITH THE CENTERLINE OF VT ROUTE 30, 0.2 M (0.7 FT) NORTHEAST OF THE NORTHEAST EDGE OF PAVEMENT OF VT ROUTE 30, 20.5 M (67.3 FT) SOUTH-SOUTHWEST OF POLE NO 431-1, 20.0 M (65.6 FT) SOUTH-SOUTHWEST OF THE SOUTHWEST END POST OF A WOODEN SLATE FENCE FOR A CEMETERY, 23.0 M (75.5 FT) EAST OF AND ACROSS THE ROAD FROM POLE NO 431/672, 37.6 M (123.4 FT) NORTH-NORTHWEST OF POLE NO 32A/671S, 35.6 M (116.8 FT) NORTHWEST OF THE WEST CORNER OF A 2-BAY ATTACHED GARAGE FOR HOUSE NO 3458.

TRAVERSE TIES



*MAIN TRAVERSE COMPLETED 12/12/2011 BY R. GILMAN P.C. & C. CYR

ALIGNMENT TIES

| |
|---------|
| NORTH = |
| EAST = |
| ELEV. = |

| |
|---------|
| NORTH = |
| EAST = |
| ELEV. = |

| |
|---------|
| NORTH = |
| EAST = |
| ELEV. = |

| |
|---------|
| NORTH = |
| EAST = |
| ELEV. = |

| |
|---------|
| NORTH = |
| EAST = |
| ELEV. = |

| | |
|------------|---------------|
| DATUM | |
| VERTICAL | NAVD 88 |
| HORIZONTAL | NAD 83 (CORS) |
| ADJUSTMENT | COMPASS |

| | | | |
|-----------------|---------------------|-------------|---------------|
| PROJECT NAME: | JAMAICA | PLOT DATE: | 09-JUL-2012 |
| PROJECT NUMBER: | ER-BRF 015-1(23) | DRAWN BY: | R. BULLOCK |
| FILE NAME: | survey\11b326t1.dgn | CHECKED BY: | |
| PROJECT LEADER: | K. HIGGINS | TIE SHEET | SHEET 9 OF 16 |
| DESIGNED BY: | | | |