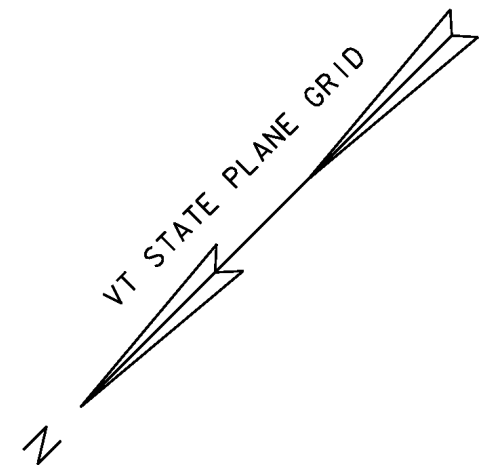
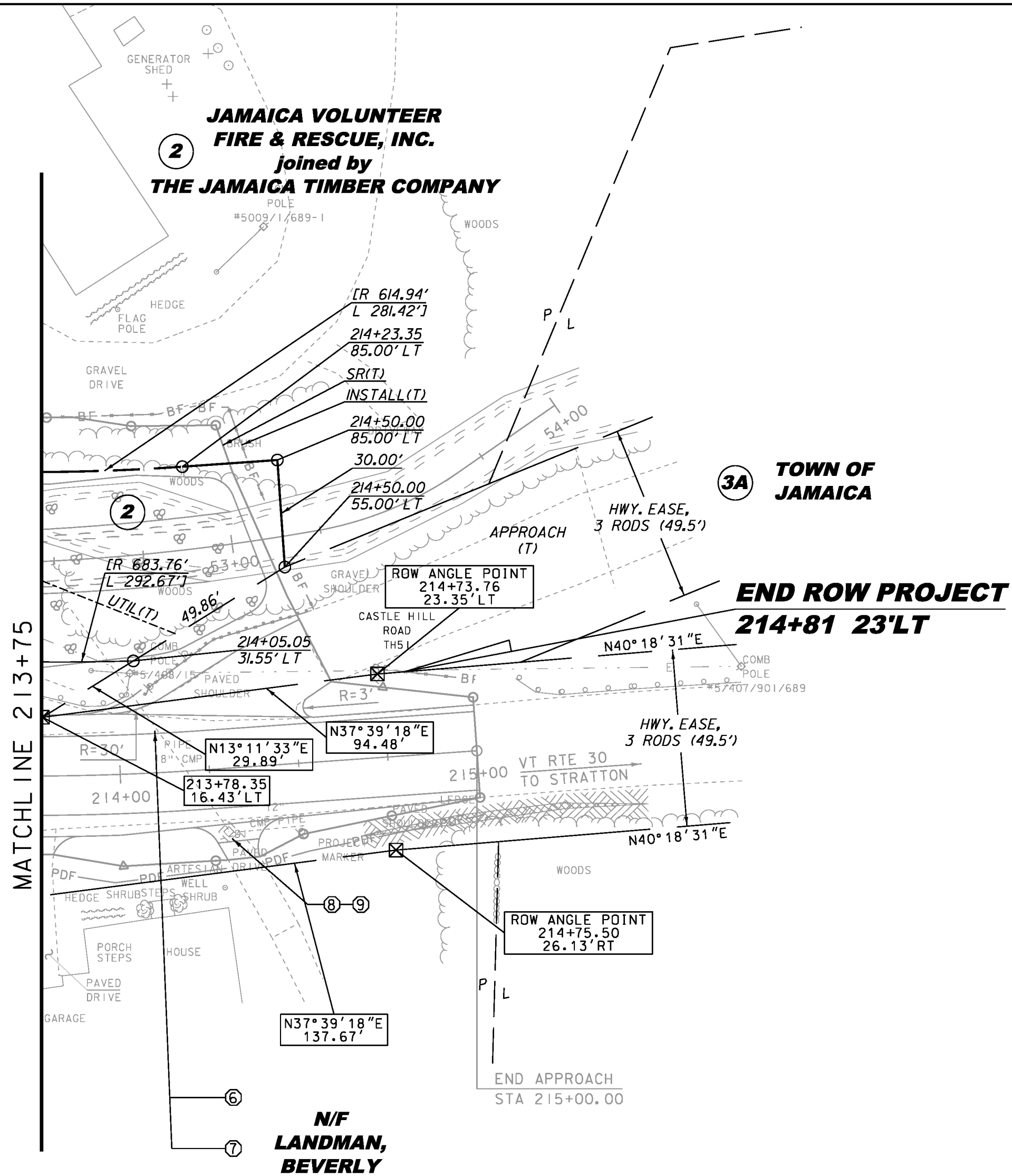


Original Drawing – Ink on polymer meeting the requirements of 27 V.S.A. § 1403



CONSTRUCT 10' - 0" PAVED APRON
STA 214+19.48 - 214+42.00 RT

CULVERTS AND STORM DRAINS
(SEE DRAINAGE DETAIL SHEET)

- ⑥ STA 213+71.50 LT - 214+29.30 RT
- ⑦ STA 213+87.11 LT - 214+29.11 RT
- ⑧ STA 214+29.20 RT
- ⑨ STA 214+29.20 RT

☒ CALCULATED R.O.W. POINT

LAYOUT 2
SCALE 1" = 20' - 0"
20 0 20

**FOR R.O.W.
USE ONLY**

LINES SHOWN ON THIS PLAN AS EXISTING
PROPERTY LINES P/L ARE BELIEVED TO
BE ACCURATE BUT SHOULD NOT BE RELIED
UPON FOR PURPOSES UNRELATED TO THE
STATE OF VERMONT'S ACQUISITION OF LAND
AND RIGHTS FOR THIS PROJECT.

PROJECT NAME: JAMAICA
PROJECT NUMBER: ER-BRF 015-1(23)

FILE NAME: r1b316lay2.dgn
PROJECT LEADER: K. HIGGINS
DESIGNED BY: G. LAROCHE
ROW LAYOUT SHEET 2 OF 2

PLOT DATE: 09-JUL-2012
DRAWN BY: E. PIERCE
CHECKED BY: E. PIERCE
SHEET 4 OF 16