

INDEX OF SHEETS

1. Title Sheet	
2. Typical Section	
3. Summary of Quantities and Drainage Items	
4-5. Earthwork Sheets	
6-7. ROW Detail Sheets	
8-11. Plan and Profile Sheets	
12-13. Blank	
14. B-1 Banking Tables	12/ 8/71
15. B-5 Embankment and Muck Excavation	12/ 8/71
16. D-2 Roadways	7/17/72 R
17. D-4 Metal End Sections	7/17/72 R
18. D-6 R.C.D. I. w/grate	4/ 4/73
19. D-11 Cast Iron Grate, Type A	4/25/72 R
20. Blank	
21. E-2 Road Const. Approach Signs	10/19/73 R
22. E-4 Road Const. Paving Signs	11/ 6/73 R
23. E-6 On-Project Const. Signs	12/14/73 R
24. Blank	
25. F-1 Heavy Wire Fence w/St. Posts	12/ 8/71
26. G-4 Marker Posts	12/ 8/71
27-36. Cross Sections	

STATE OF VERMONT
DEPARTMENT OF HIGHWAYS



PROPOSED IMPROVEMENT
TOWN OF ST. JOHNSBURY
COUNTY OF CALEDONIA

U.S. ROUTE 2

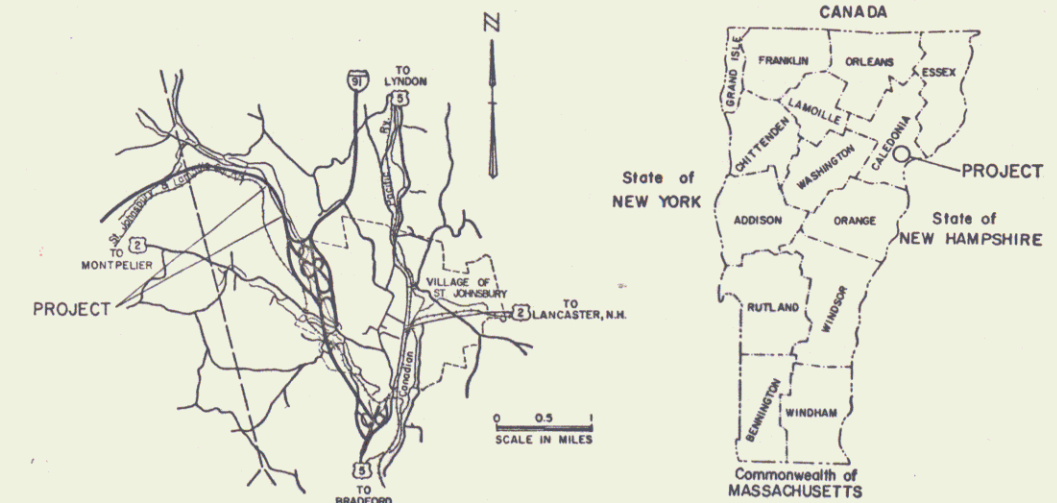
MONTPELIER - ST. JOHNSBURY ROAD

BEGINNING AT A POINT APPROXIMATELY 1.125 MILES SOUTH-EASTERLY OF THE DANVILLE - ST. JOHNSBURY TOWN LINE AND EXTENDING SOUTHERLY 0.252 MILES.

LENGTH OF ROADWAY = 1,331.85 = 0.252 MILE
LENGTH OF PROJECT = 1,331.85 = 0.252 MILE

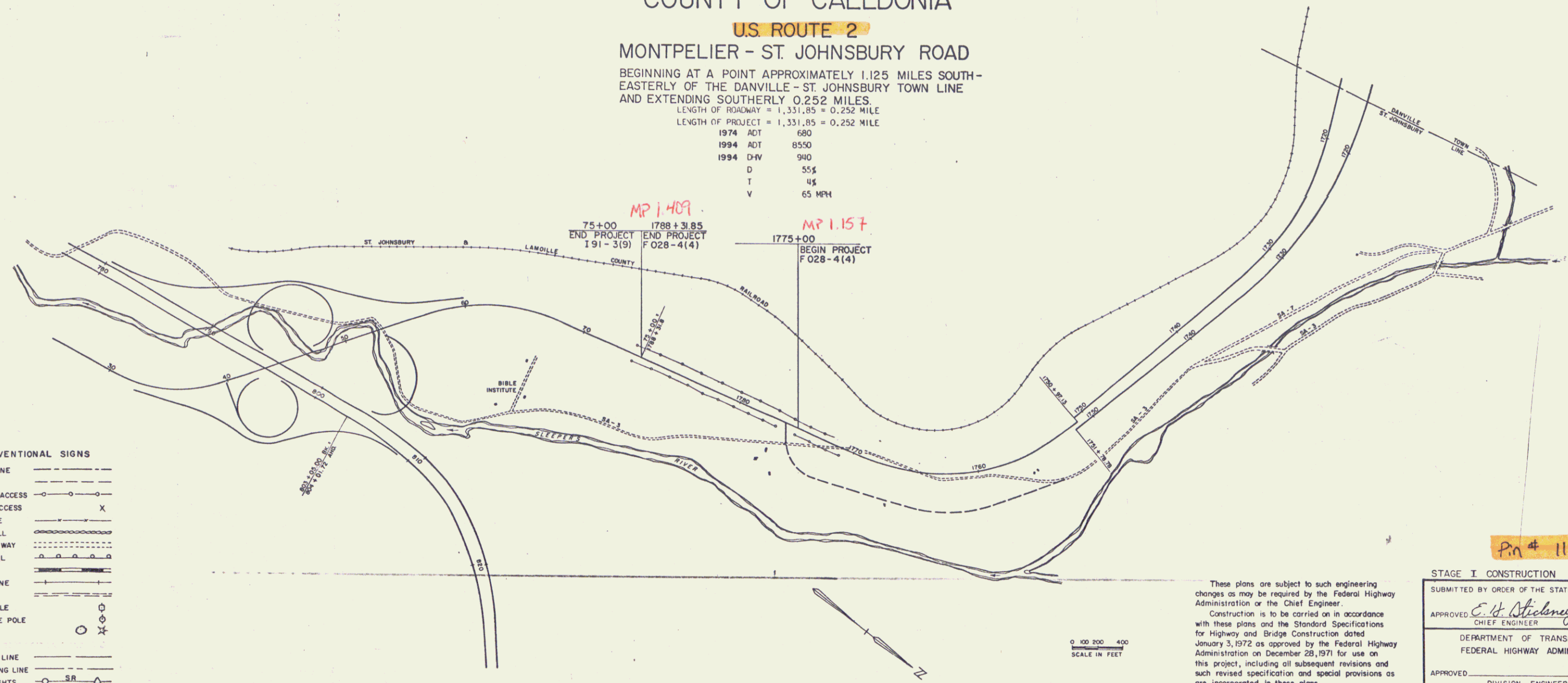
1974 ADT	680
1994 ADT	8550
1994 D-V	940
D	55%
T	4%
V	65 MPH

MP 1.409
75+00 1788+31.85
END PROJECT END PROJECT
191-3(9) F 028-4(4)
MP 1.157
1775+00
BEGIN PROJECT
F 028-4(4)



CONVENTIONAL SIGNS

COUNTY LINE	---
TOWN LINE	- - -
LIMITS OF ACCESS	○
POINT OF ACCESS	X
FENCE LINE	— · — · —
STONE WALL	— · — · — · —
TRAVELED WAY	— · — · — · —
RAILROAD	— · — · — · —
SURVEY LINE	— · — · — · —
CULVERT	— · — · — · —
POWER POLE	○
TELEPHONE POLE	○
TREES	○
PROPERTY LINE	— · — · — · —
R.O.W TAKING LINE	— · — · — · —
SLOPE RIGHTS	○ SR
TOP OF CUT	○
TOE OF SLOPE	○



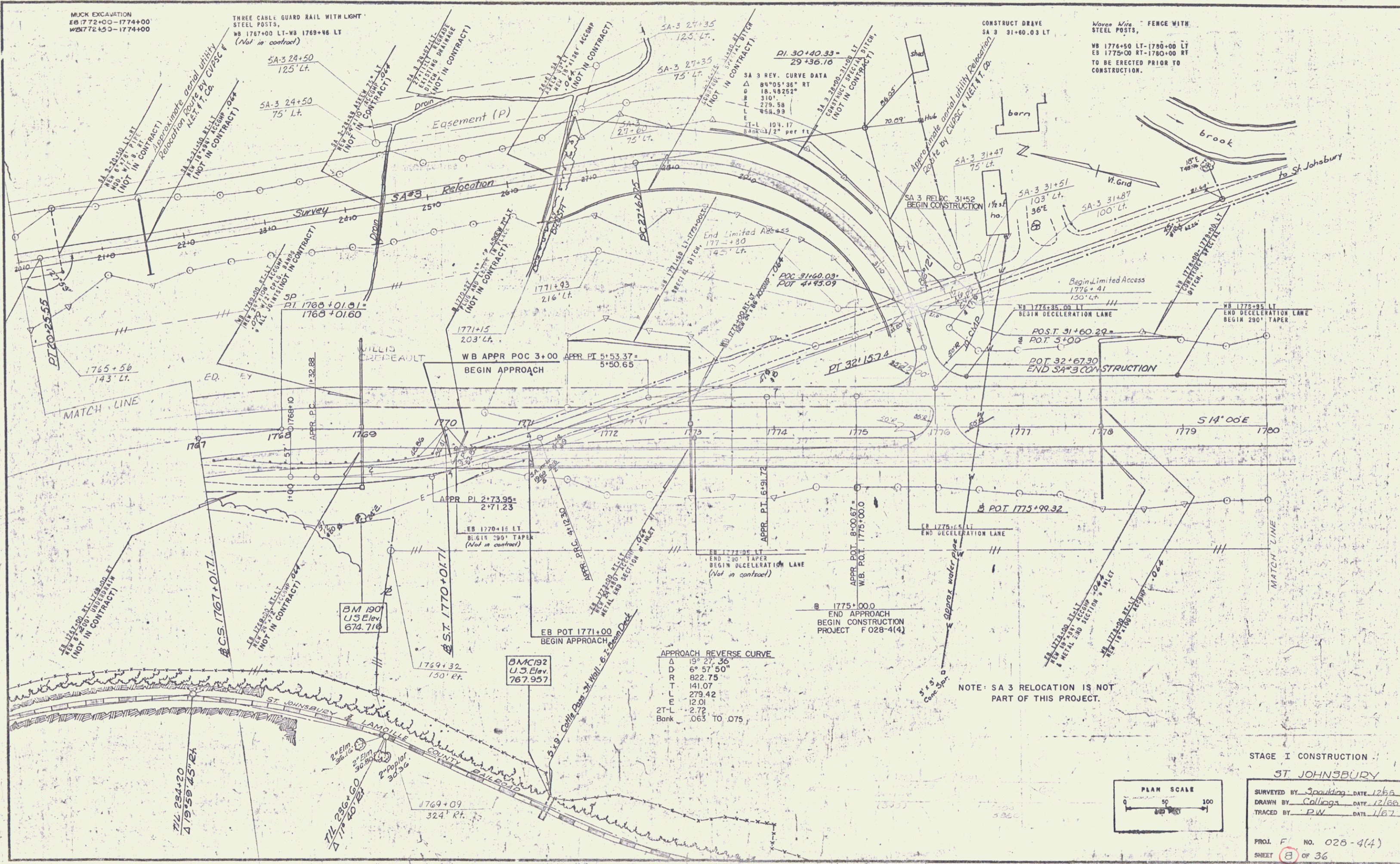
FOR R.O.W. DETAILS, SEE R.O.W. PLANS FOR THIS PROJECT.

0 100 200 400
SCALE IN FEET

These plans are subject to such engineering changes as may be required by the Federal Highway Administration or the Chief Engineer. Construction is to be carried on in accordance with these plans and the Standard Specifications for Highway and Bridge Construction dated January 3, 1972 as approved by the Federal Highway Administration on December 28, 1971 for use on this project, including all subsequent revisions and such revised specification and special provisions as are incorporated in these plans.

Pin # 11R005

STAGE I CONSTRUCTION
SUBMITTED BY ORDER OF THE STATE HIGHWAY BOARD
APPROVED *E. H. Stebbins* DATE 1/20/74
CHIEF ENGINEER
DEPARTMENT OF TRANSPORTATION
FEDERAL HIGHWAY ADMINISTRATION
APPROVED _____ DATE _____
DIVISION ENGINEER
PROJECT F. NR. 028-4(4)
SHEET 1 OF 36 SHEETS
D-10 SRS. 12/17/70



MUCK EXCAVATION
 EB 1772+00-1774+00
 WB 1772+50-1774+00

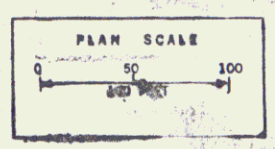
THREE CABLE GUARD RAIL WITH LIGHT
 STEEL POSTS,
 WB 1767+00 LT-WB 1769+86 LT
 (Not in contract)

Waves Wire FENCE WITH
 STEEL POSTS,
 WB 1776+50 LT-1780+00 LT
 EB 1775+00 RT-1780+00 RT
 TO BE ERECTED PRIOR TO
 CONSTRUCTION.

APPROACH REVERSE CURVE

Δ	19° 27' 36"
D	6° 57' 50"
R	822.75
T	141.07
L	279.42
E	12.01
2T-L	-2.72
Bank	.063 TO .075

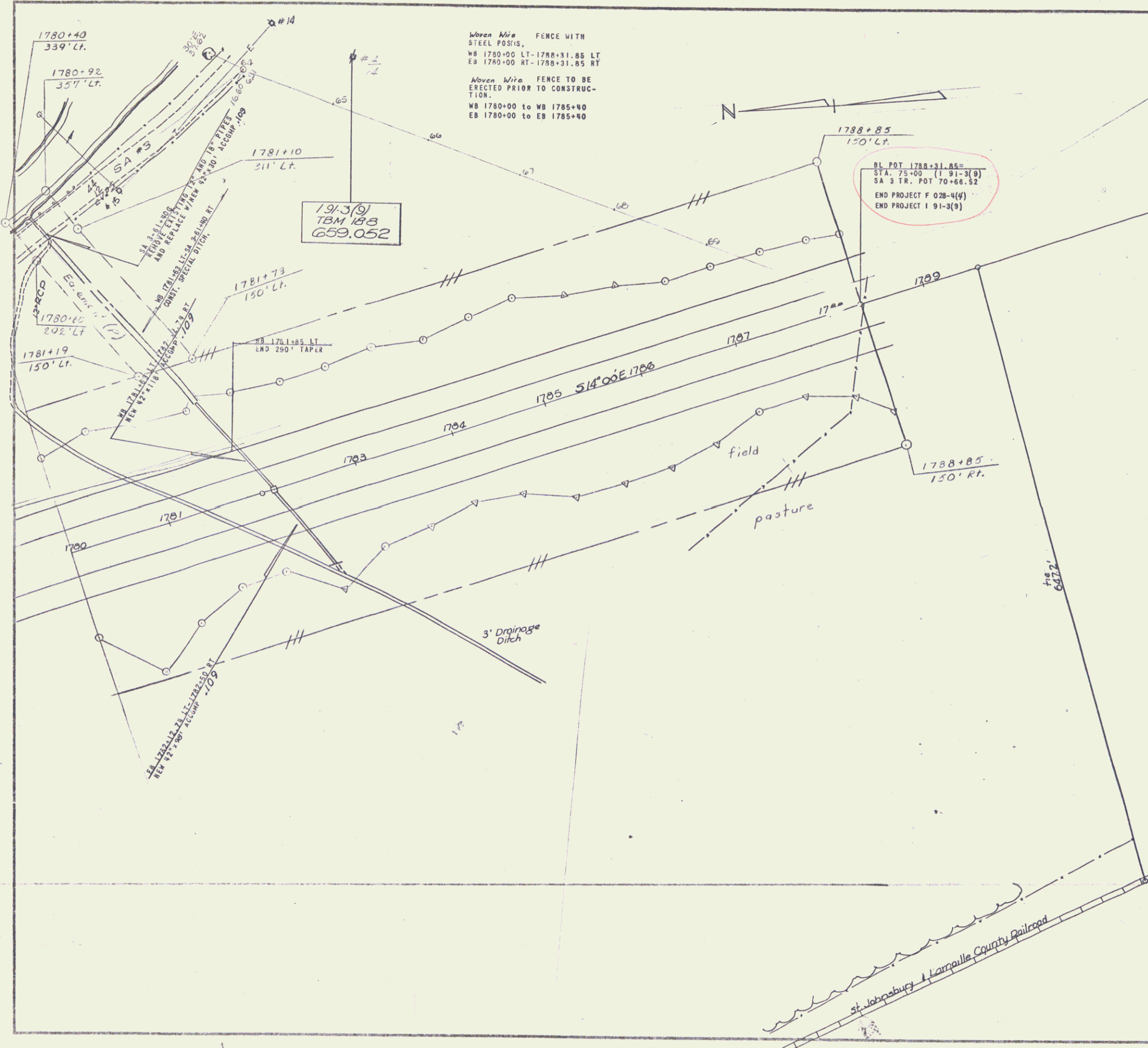
NOTE: SA 3 RELOCATION IS NOT
 PART OF THIS PROJECT.



STAGE I CONSTRUCTION
 ST. JOHNSBURY

SURVEYED BY Spaulding DATE 12/85
 DRAWN BY Collins DATE 12/86
 TRACED BY PW DATE 1/67

PROJ. F. No. 028-4(4)
 SHEET 8 OF 36



When Wire FENCE WITH
 STEEL POSTS,
 WB 1780+00 LT-1788+31.85 LT
 EB 1780+00 RT-1788+31.85 RT
 When Wire FENCE TO BE
 ERECTED PRIOR TO CONSTRUCTION,
 WB 1780+00 to WB 1785+00
 EB 1780+00 to EB 1785+00

Stage 1 Construction

ST. JOHNSBURY

SURVEYED BY Spaulding DATE 12/66
 DRAWN BY Collins DATE 12/66
 TRACED BY PW DATE 1/67

PROJ F NO. 028-4(4)
 SHEET 10 OF 36

