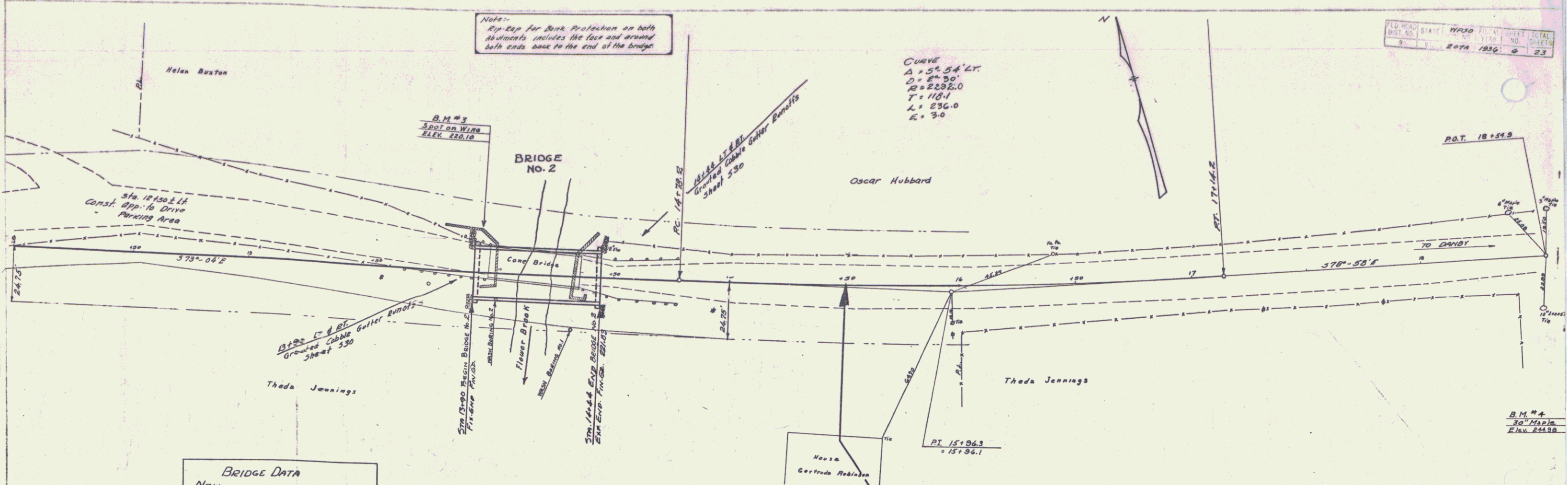
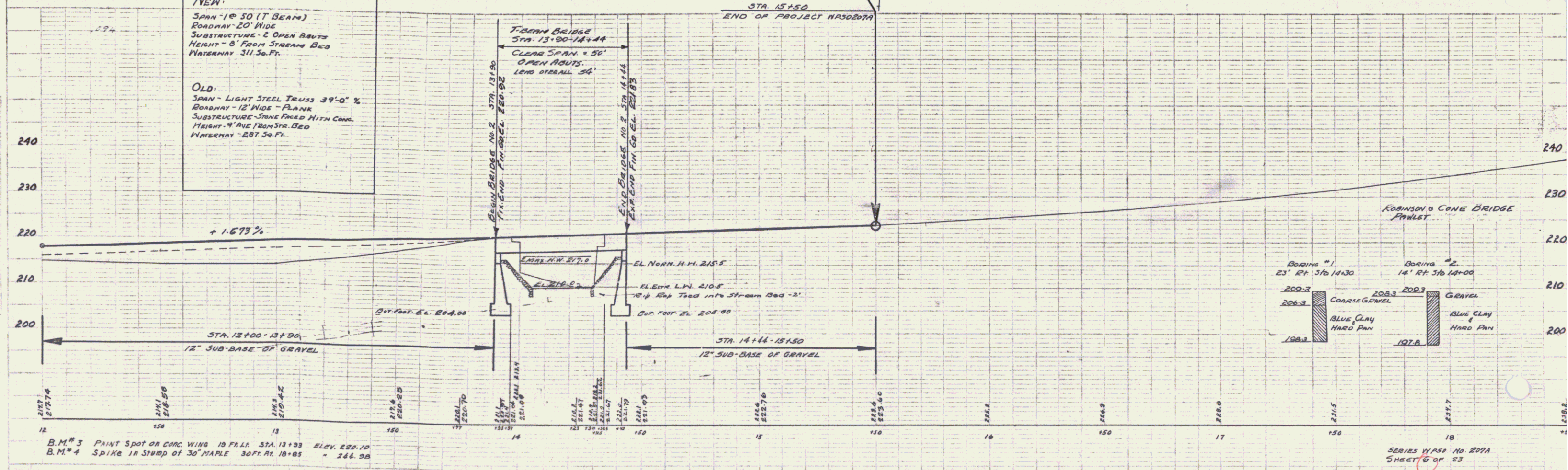


Note: Exp. Exp. for Bank Protection on both abutments includes the face and around both ends back to the end of the bridge

CURVE
 $\Delta = 5^\circ 54' LT$
 $D = 87.30'$
 $R = 2332.0$
 $T = 118.1$
 $L = 236.0$
 $E = 9.0$



BRIDGE DATA
NEW
 SPAN - 1@ 50' (T BEAM)
 ROADWAY - 20' WIDE
 SUBSTRUCTURE - 2 OPEN ABUTTS
 HEIGHT - 6' FROM STREAM BED
 WATERWAY - 31.50 FT.
OLD
 SPAN - LIGHT STEEL TRUSS 39'-0" W
 ROADWAY - 12' WIDE "FLANK"
 SUBSTRUCTURE - STONE FORD WITH CONC.
 HEIGHT - 9' AVE FROM STR. BED
 WATERWAY - 287.50 FT.



B.M. #3 PAINT SPOT ON CONC WING 10 FT. STA. 12+33 ELEV. 220.10
 B.M. #4 SPIKE IN STUMP OF 30" MAPLE 30 FT. N. 10+83 = 244.98

