

Original Drawing – Ink on polymer meeting the requirements of 27 V.S.A. § 1403

R. O. W. PLANS

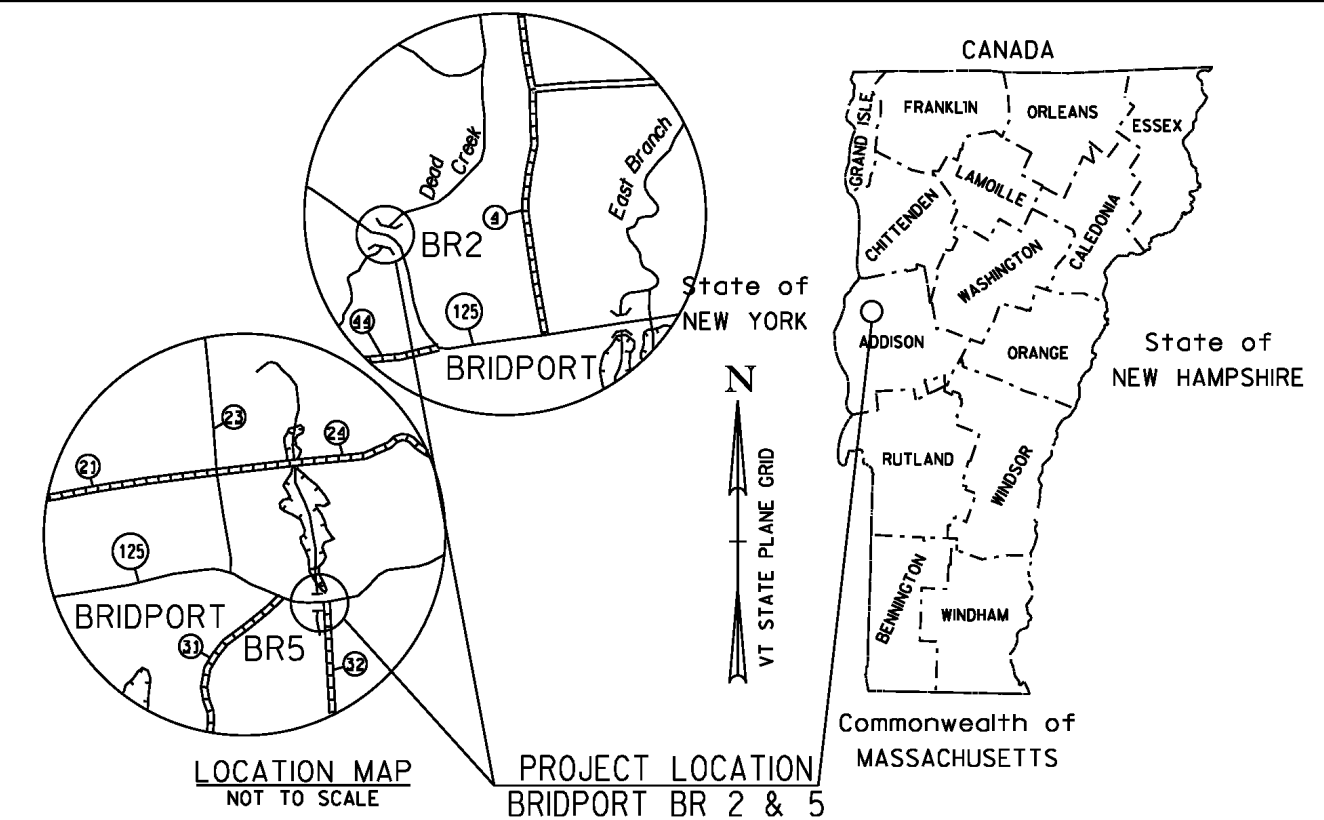
INDEX OF SHEETS

- 1 TITLE SHEET
- 2 LEGEND SHEET
- 3 DETAIL SHEET
- 4 LAYOUT SHEET - BR5
- 5 PRELIMINARY INFORMATION SHEET - BR5
- 6 TYPICAL SECTION SHEET - BR5
- 7 SURVEY & CONTROL TIES - BR5
- 8 ROADWAY PROFILE SHEET - BR5
- 9 STREAM PROFILE SHEET - BR5
- 10 STRUCTURAL PLAN & DETAIL SHEET - BR5
- 11 DETOUR PLAN SHEET - BR5
- 12 PROJECT IMPACT PLAN SHEET - BR5

STATE OF VERMONT AGENCY OF TRANSPORTATION



PROPOSED IMPROVEMENT BRIDGE PROJECT TOWN OF BRIDPORT COUNTY OF ADDISON VT ROUTE 125 (MAJOR COLLECTOR) BRIDGE NUMBERS 2 AND 5

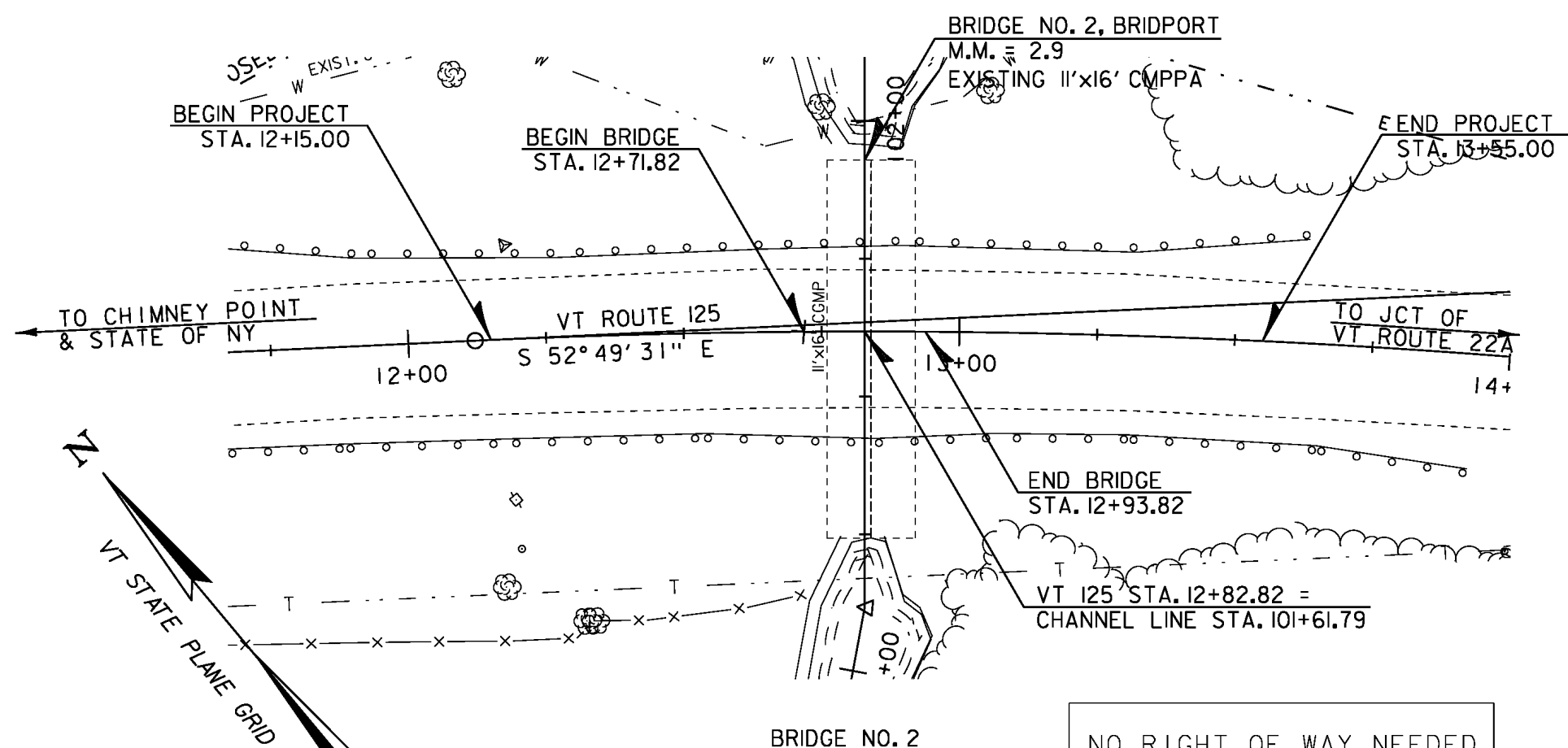


PROJECT LOCATION: BRIDGE NO. 2 IS LOCATED ON VERMONT ROUTE 125, 2.3 MILES WEST OF THE JUNCTION WITH VERMONT ROUTE 22A
BRIDGE NO. 5 IS LOCATED ON VERMONT ROUTE 125, 1.6 MILES EAST OF THE JUNCTION WITH VERMONT ROUTE 22A.

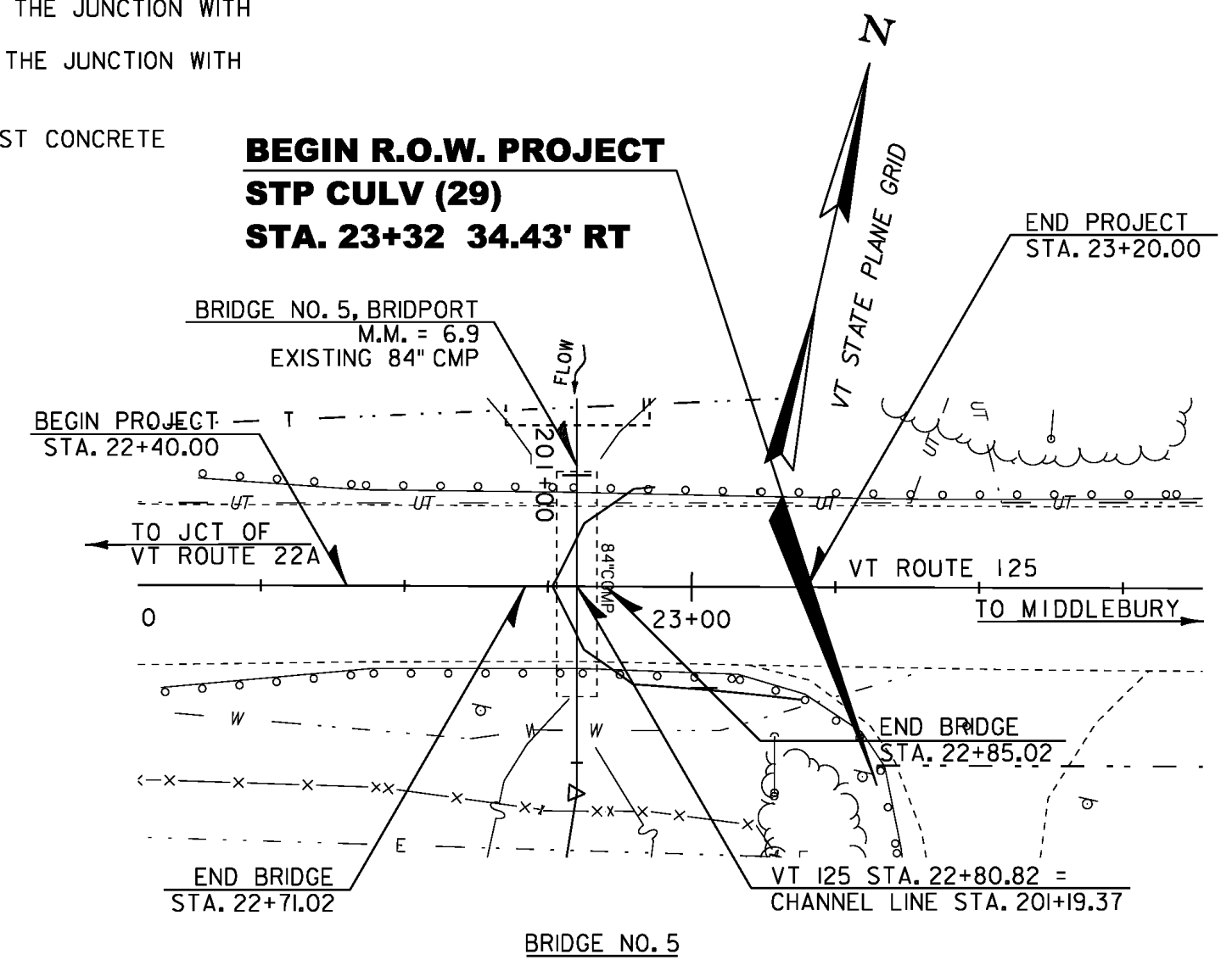
PROJECT DESCRIPTION: REPLACEMENT OF EXISTING CORRUGATED STEEL CULVERTS WITH PRECAST CONCRETE STRUCTURES ALONG WITH RELATED ROADWAY AND CHANNEL WORK.

LENGTH OF PROJECT: BRIDGE 2: 140 FEET
BRIDGE 5: 80 FEET

LENGTH OF R.O.W. PROJECT: BRIDGE 5: 8 FEET



NO RIGHT OF WAY NEEDED
FOR BRIDGE NO. 2



**BEGIN R.O.W. PROJECT
STP CULV (29)
STA. 23+32 34.43' RT**

**END R.O.W. PROJECT
STP CULV (29)
STA. 23+40 70.00' RT**

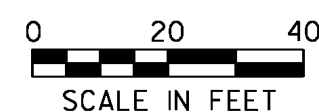
ALL DRIVES AS INDICATED ON PLANS
ARE SUBJECT TO PERMITS PURSUANT
TO TITLE 19 V.S.A. § 1111.

CHIEF OF RIGHT OF WAY	
APPROVED <u>ROBERT M. WHITE</u>	DATE <u>02-11-14</u>
PROJECT MANAGER : MARK SARGENT, P.E.	
PROJECT NAME : BRIDPORT	
PROJECT NUMBER : STP CULV (29)	
SHEET 1 OF 12 SHEETS	

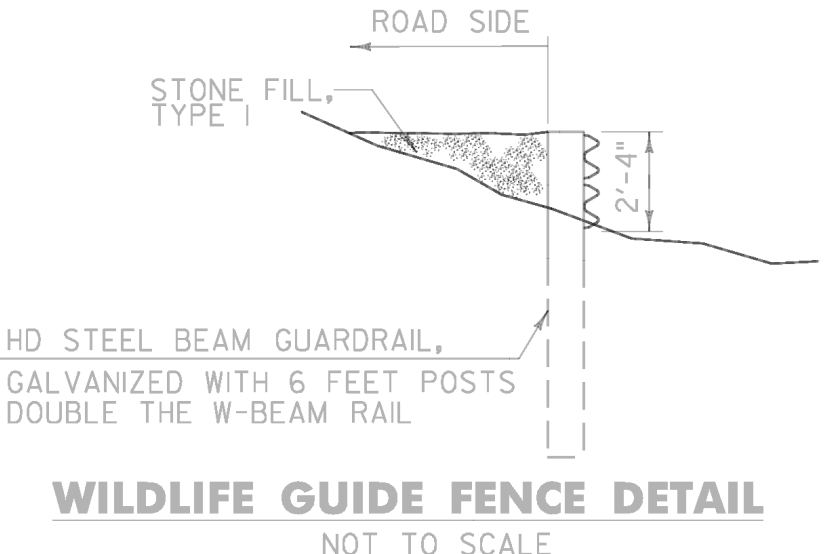
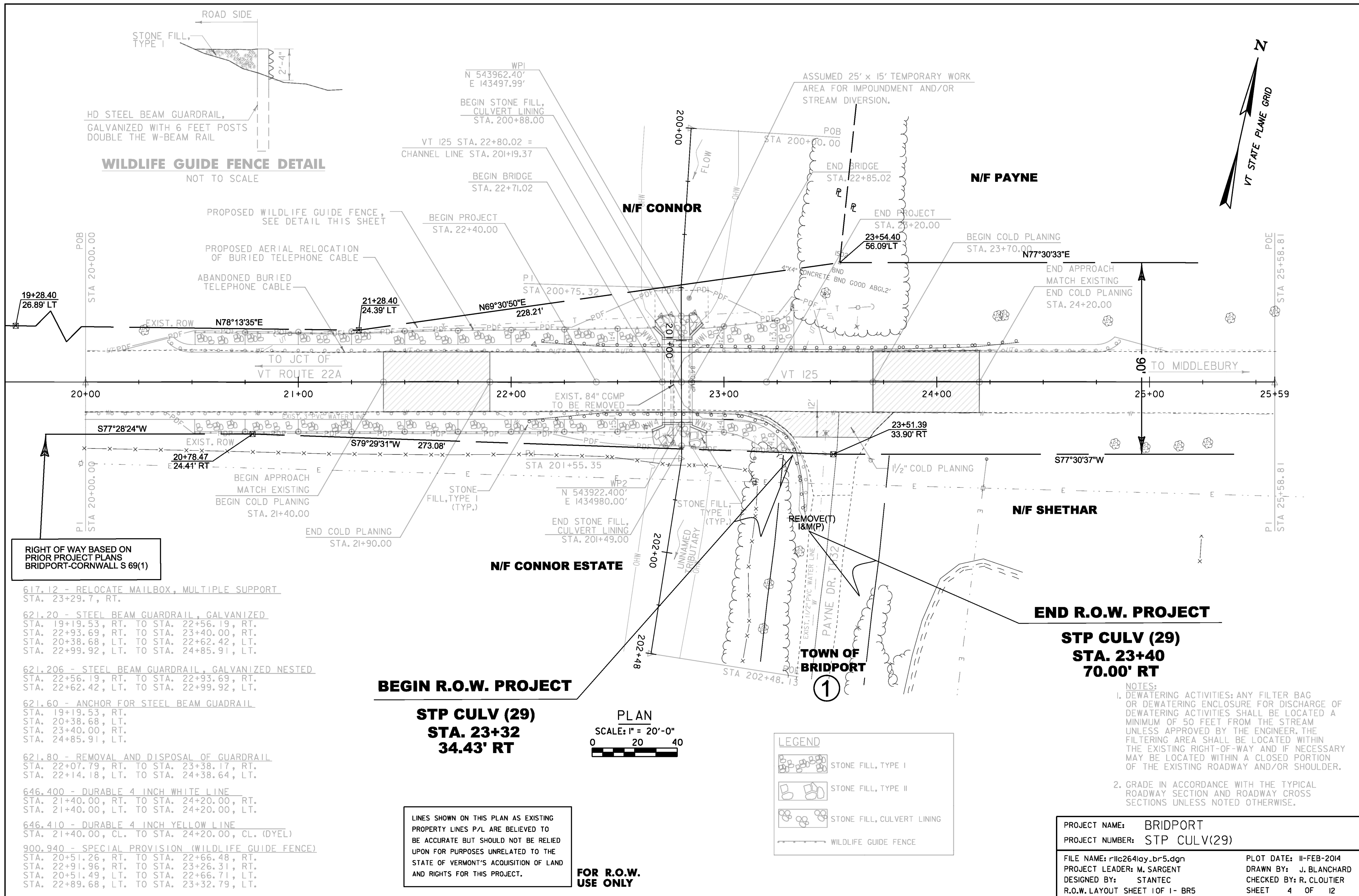
THESE PLANS ARE SUBJECT TO SUCH ENGINEERING CHANGES AS MAY BE REQUIRED BY THE FEDERAL HIGHWAY ADMINISTRATION OR THE DIRECTOR OF PROGRAM DEVELOPMENT.

CONSTRUCTION IS TO BE CARRIED ON IN ACCORDANCE WITH THESE PLANS AND THE STANDARD SPECIFICATIONS FOR CONSTRUCTION DATED 2011, AS APPROVED BY THE FEDERAL HIGHWAY ADMINISTRATION ON JULY 20, 2011 FOR USE ON THIS PROJECT, INCLUDING ALL SUBSEQUENT REVISIONS AND SUCH REVISED SPECIFICATIONS AND SPECIAL PROVISIONS AS ARE INCORPORATED IN THESE PLANS.

QUALITY ASSURANCE PROGRAM : LEVEL 2	
SURVEYED BY : VHB	
SURVEYED DATE : DECEMBER 2008	
DATUM	
VERTICAL	(SEE SURVEY CONTROL AND TIE SHEETS)
HORIZONTAL	(SEE SURVEY CONTROL AND TIE SHEETS)



Original Drawing - Ink on polymer meeting the requirements of 27 V.S.A. § 1403



WILDLIFE GUIDE FENCE DETAIL
NOT TO SCALE

PROPOSED WILDLIFE GUIDE FENCE, SEE DETAIL THIS SHEET

PROPOSED AERIAL RELOCATION OF BURIED TELEPHONE CABLE

ABANDONED BURIED TELEPHONE CABLE

19+28.40
26.89' LT

21+28.40
24.39' LT

23+54.40
56.09' LT

20+78.47
24.41' RT

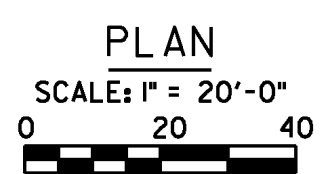
23+51.39
33.90' RT

RIGHT OF WAY BASED ON
PRIOR PROJECT PLANS
BRIDPORT-CORNWALL S 69(1)

- 617.12 - RELOCATE MAILBOX, MULTIPLE SUPPORT
STA. 23+29.7, RT.
- 621.20 - STEEL BEAM GUARDRAIL, GALVANIZED
STA. 19+19.53, RT. TO STA. 22+56.19, RT.
STA. 22+93.69, RT. TO STA. 23+40.00, RT.
STA. 20+38.68, LT. TO STA. 22+62.42, LT.
STA. 22+99.92, LT. TO STA. 24+85.91, LT.
- 621.206 - STEEL BEAM GUARDRAIL, GALVANIZED NESTED
STA. 22+56.19, RT. TO STA. 22+93.69, RT.
STA. 22+62.42, LT. TO STA. 22+99.92, LT.
- 621.60 - ANCHOR FOR STEEL BEAM GUARDRAIL
STA. 19+19.53, RT.
STA. 20+38.68, LT.
STA. 23+40.00, RT.
STA. 24+85.91, LT.
- 621.80 - REMOVAL AND DISPOSAL OF GUARDRAIL
STA. 22+07.79, RT. TO STA. 23+38.17, RT.
STA. 22+14.18, LT. TO STA. 24+38.64, LT.
- 646.400 - DURABLE 4 INCH WHITE LINE
STA. 21+40.00, RT. TO STA. 24+20.00, RT.
STA. 21+40.00, LT. TO STA. 24+20.00, LT.
- 646.410 - DURABLE 4 INCH YELLOW LINE
STA. 21+40.00, CL. TO STA. 24+20.00, CL. (DYEL)
- 900.940 - SPECIAL PROVISION (WILDLIFE GUIDE FENCE)
STA. 20+51.26, RT. TO STA. 22+66.48, RT.
STA. 22+91.96, RT. TO STA. 23+26.31, RT.
STA. 20+51.49, LT. TO STA. 22+66.71, LT.
STA. 22+89.68, LT. TO STA. 23+32.79, LT.

BEGIN R.O.W. PROJECT

STP CULV (29)
STA. 23+32
34.43' RT



LEGEND	
	STONE FILL, TYPE I
	STONE FILL, TYPE II
	STONE FILL, CULVERT LINING
	WILDLIFE GUIDE FENCE

LINES SHOWN ON THIS PLAN AS EXISTING
PROPERTY LINES P/L ARE BELIEVED TO
BE ACCURATE BUT SHOULD NOT BE RELIED
UPON FOR PURPOSES UNRELATED TO THE
STATE OF VERMONT'S ACQUISITION OF LAND
AND RIGHTS FOR THIS PROJECT.

**FOR R.O.W.
USE ONLY**

END R.O.W. PROJECT

STP CULV (29)
STA. 23+40
70.00' RT

- NOTES:
1. DEWATERING ACTIVITIES: ANY FILTER BAG OR DEWATERING ENCLOSURE FOR DISCHARGE OF DEWATERING ACTIVITIES SHALL BE LOCATED A MINIMUM OF 50 FEET FROM THE STREAM UNLESS APPROVED BY THE ENGINEER. THE FILTERING AREA SHALL BE LOCATED WITHIN THE EXISTING RIGHT-OF-WAY AND IF NECESSARY MAY BE LOCATED WITHIN A CLOSED PORTION OF THE EXISTING ROADWAY AND/OR SHOULDER.
 2. GRADE IN ACCORDANCE WITH THE TYPICAL ROADWAY SECTION AND ROADWAY CROSS SECTIONS UNLESS NOTED OTHERWISE.

PROJECT NAME: BRIDPORT	FILE NAME: r11c264lay_br5.dgn	PLOT DATE: 11-FEB-2014
PROJECT NUMBER: STP CULV(29)	PROJECT LEADER: M. SARGENT	DRAWN BY: J. BLANCHARD
	DESIGNED BY: STANTEC	CHECKED BY: R. CLOUTIER
	R.O.W. LAYOUT SHEET 1 OF 1 - BR5	SHEET 4 OF 12

GPS CONTROL POINTS

HVCTRL #1

LEMON FAIR
 NORTH = 542755.824
 EAST = 1442527.781
 ELEV. = 207.150

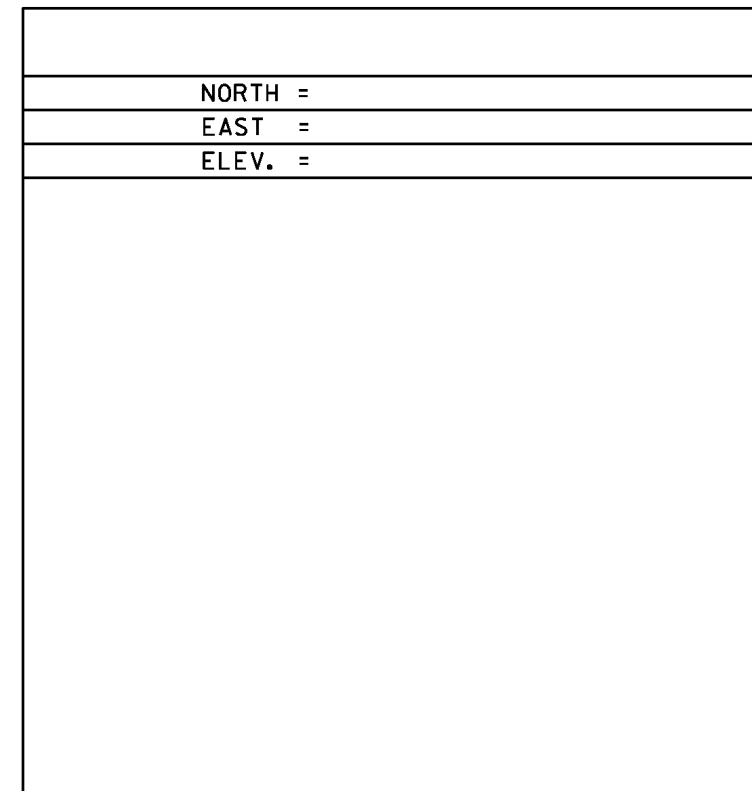
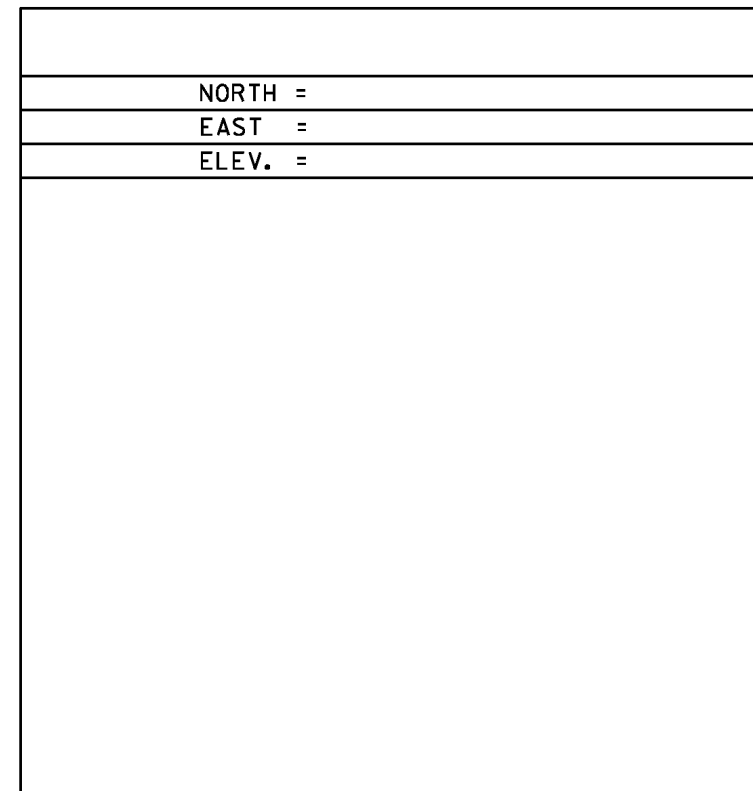
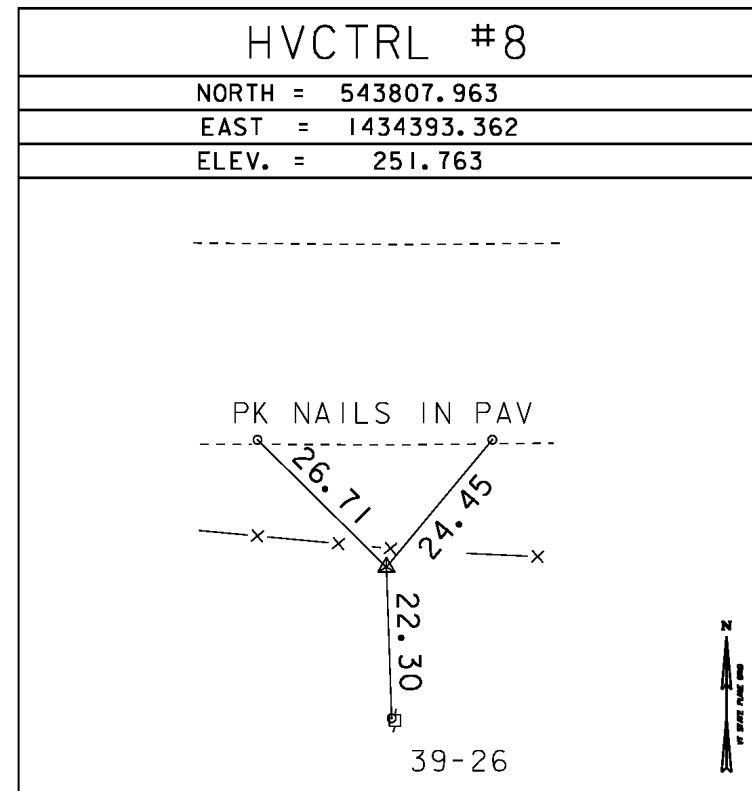
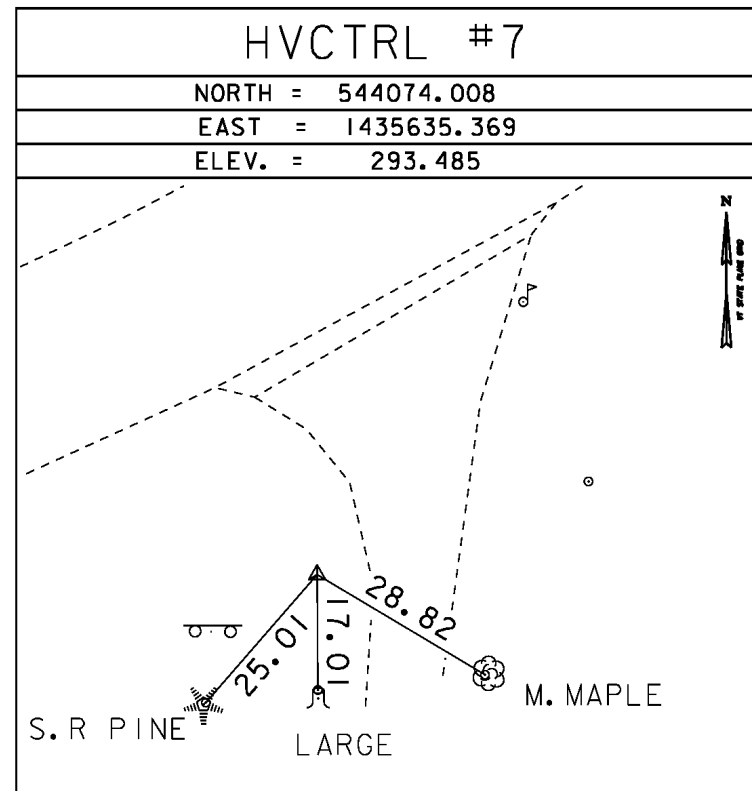
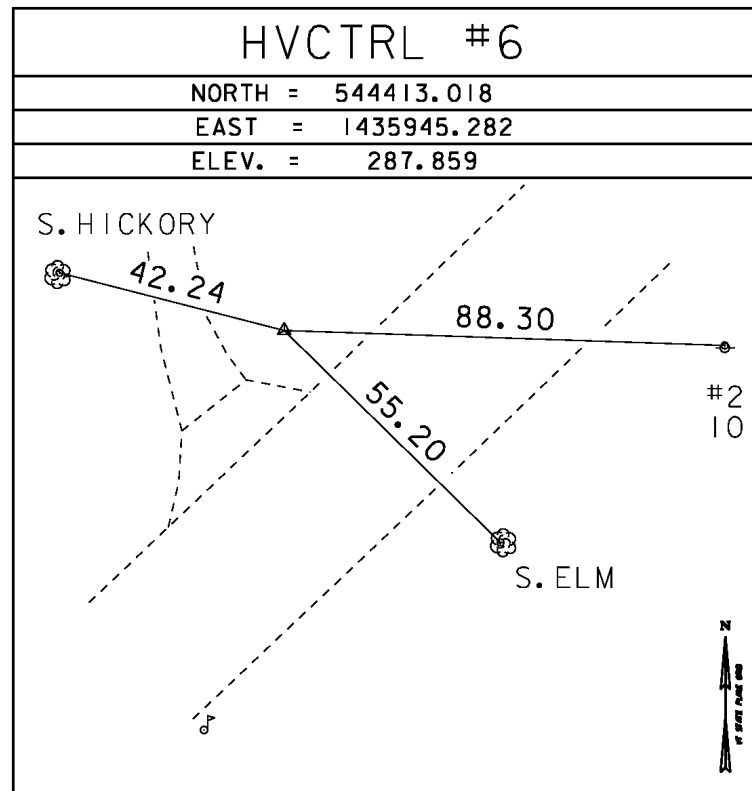
GENERAL LOCATION, 5 MI (8.0 KM) WEST OF MIDDLEBURY.
 TO REACH FROM THE JUNCTION OF VT ROUTE 30 AND VT ROUTE 125 IN MIDDLEBURY, PROCEED WEST ON ROUTE 125 FOR 4.7 MI (7.6 KM) TO A SIDE ROAD LEFT CALLED WEST ST. PROCEED SOUTH ON WEST ST FOR 0.3 MI (0.5 KM) TO A GRAVEL DRIVE AND THE MARK ON THE LEFT AND EAST. THE MARK IS LOCATED 25 FT (7.6 M) EAST OF THE CENTERLINE OF THE ROAD, 18 FT (5.5 M) NORTH OF THE CENTERLINE OF THE GRAVEL DRIVE 4 FT (1.2 M) WEST OF A FENCE CORNER, AND 2 FT (0.6 M) WEST OF A FIBERGLASS WITNESS POST.

HVCTRL #2

LEMON FAIR AZ MK
 NORTH = 546363.025
 EAST = 1440861.554
 ELEV. = 196.000

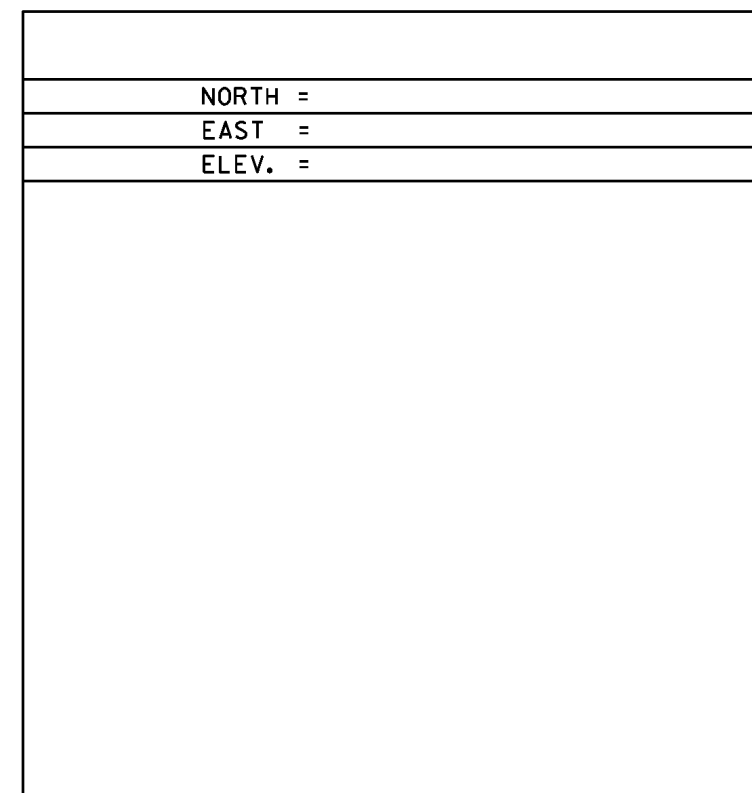
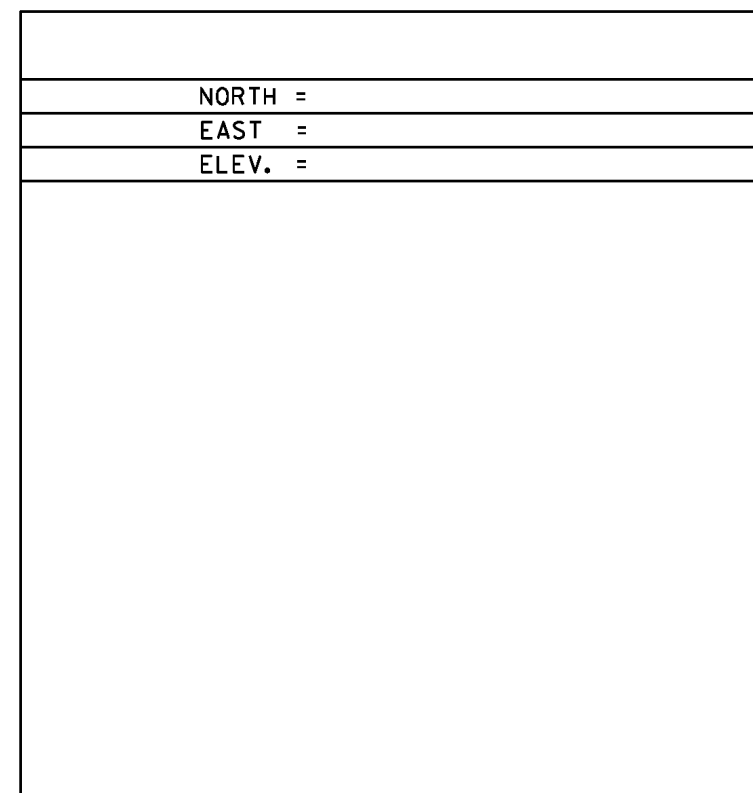
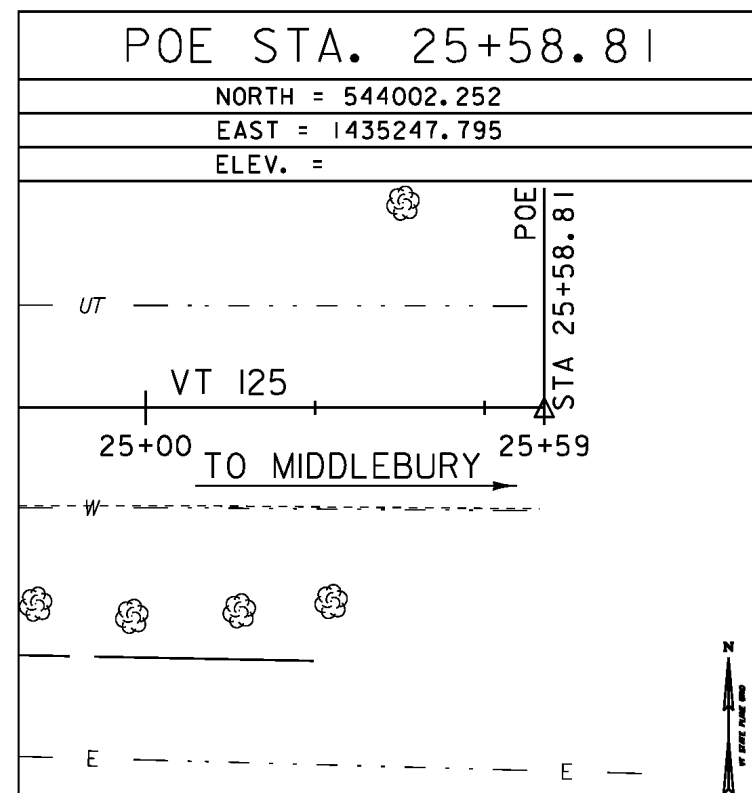
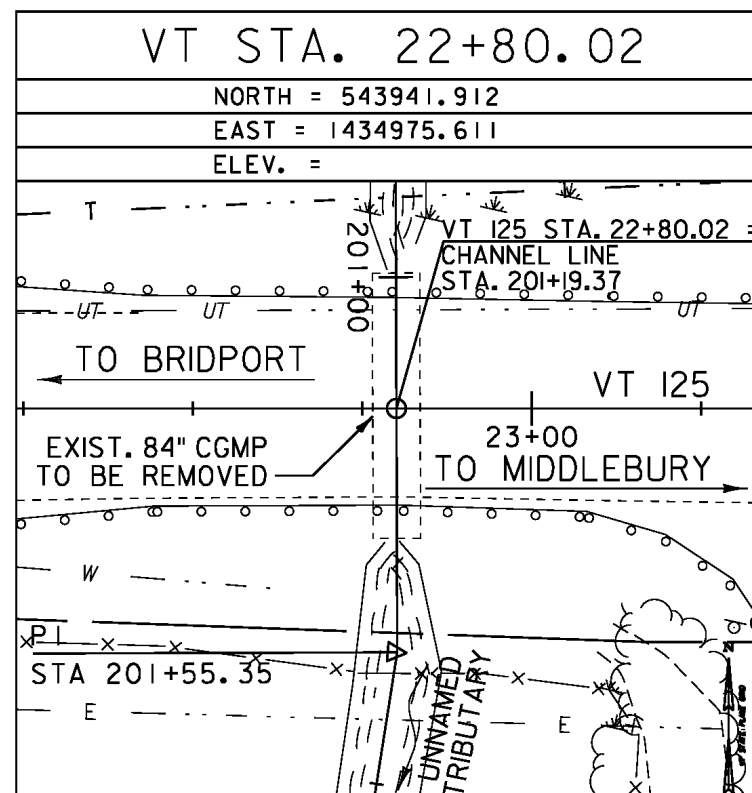
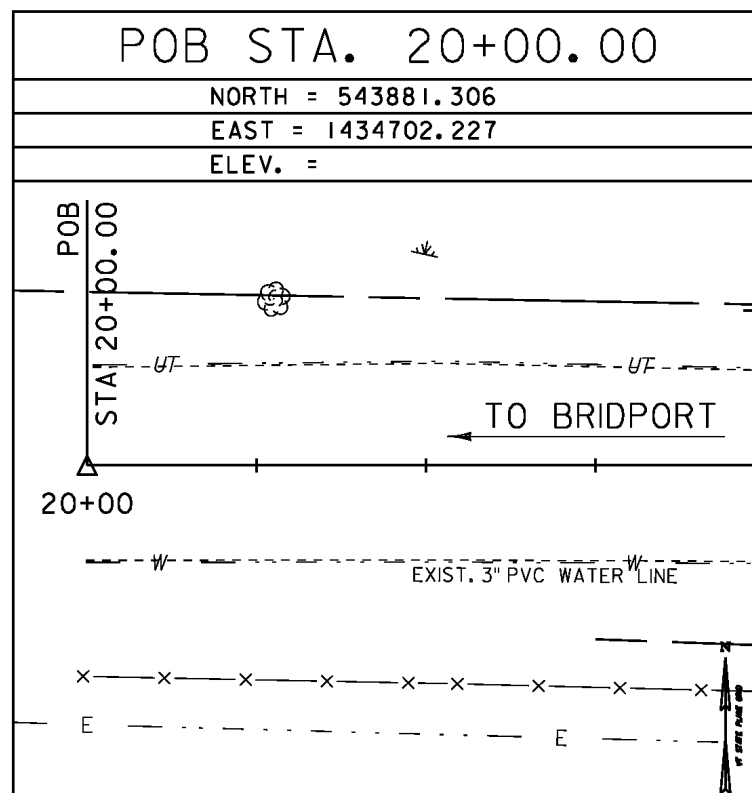
GENERAL LOCATION, 5 MI (8.0 KM) WEST OF MIDDLEBURY.
 TO REACH, FROM THE JUNCTION OF VT ROUTE 30 AND VT ROUTE 125 IN MIDDLEBURY, PROCEED WEST ON ROUTE 125 FOR 5.3 MI (8.5 KM) TO THE MARK ON THE LEFT. THE MARK IS LOCATED 315 FT (96.0 M) WEST OF THE CORNWALL/BRIDPORT TOWN LINE, 96.1 FT (29.3 M) SOUTHEAST OF UTILITY POLE NUMBER 49, 25.6 FT (7.8 M) SOUTH OF THE CENTERLINE OF ROUTE 125, AND 1 FT (0.3 M)

TRAVERSE TIES



*MAIN TRAVERSE COMPLETED 1/23/2012 BY L. ORVIS P.C & G. HITCHCOCK

ALIGNMENT TIES



DATUM	
VERTICAL	NAVD 88
HORIZONTAL	NAD 83(92)
ADJUSTMENT	COMPASS

PROJECT NAME:	BRIDPORT
PROJECT NUMBER:	STP CULV(29)
FILE NAME:	r1lc2641e_br5.dgn
PROJECT LEADER:	M. SARGENT
DESIGNED BY:	STANTEC
SURVEY CONTROL & TIES - BR5	
PLOT DATE:	11-FEB-2014
DRAWN BY:	STANTEC
CHECKED BY:	STANTEC
SHEET	7 OF 12