

GPS CONTROL POINTS

HVCTRL #1

LEMON FAIR
 NORTH = 542755.824
 EAST = 1442527.781
 ELEV. = 207.150

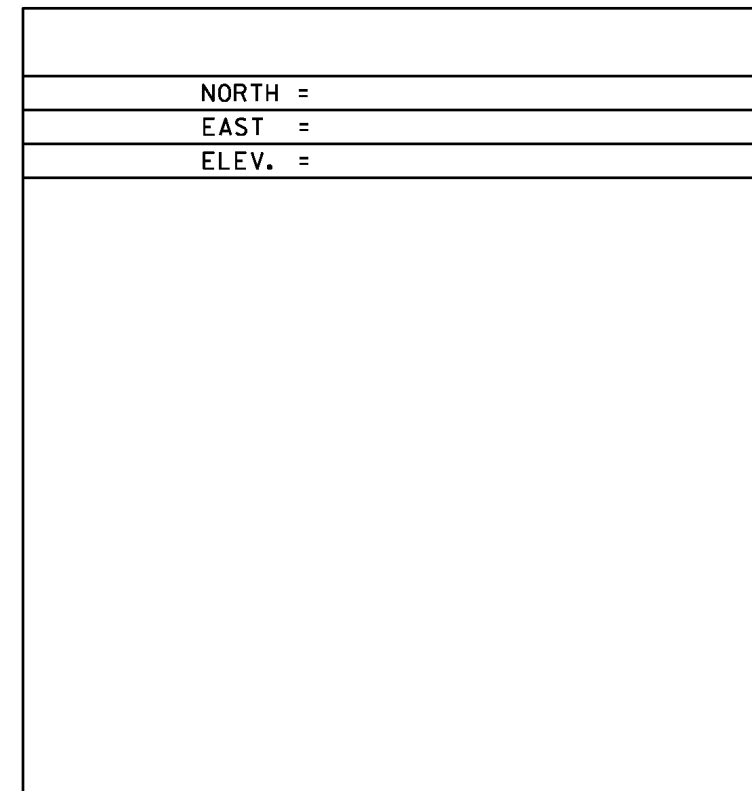
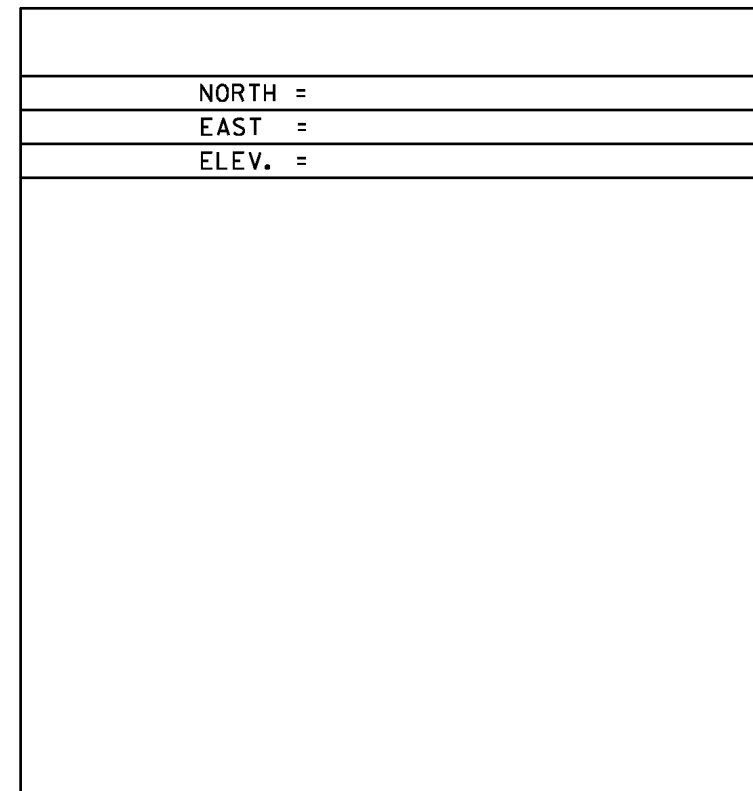
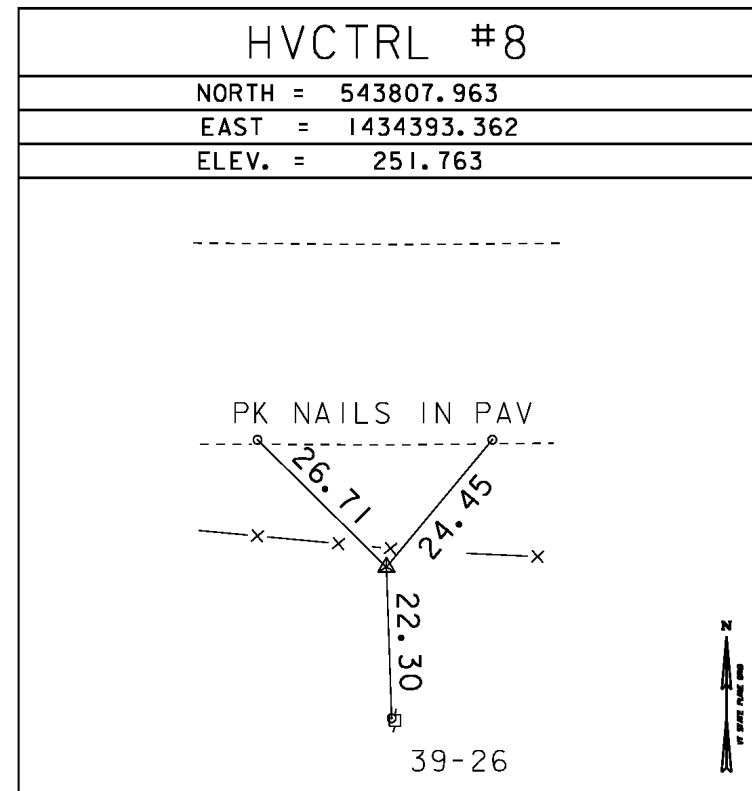
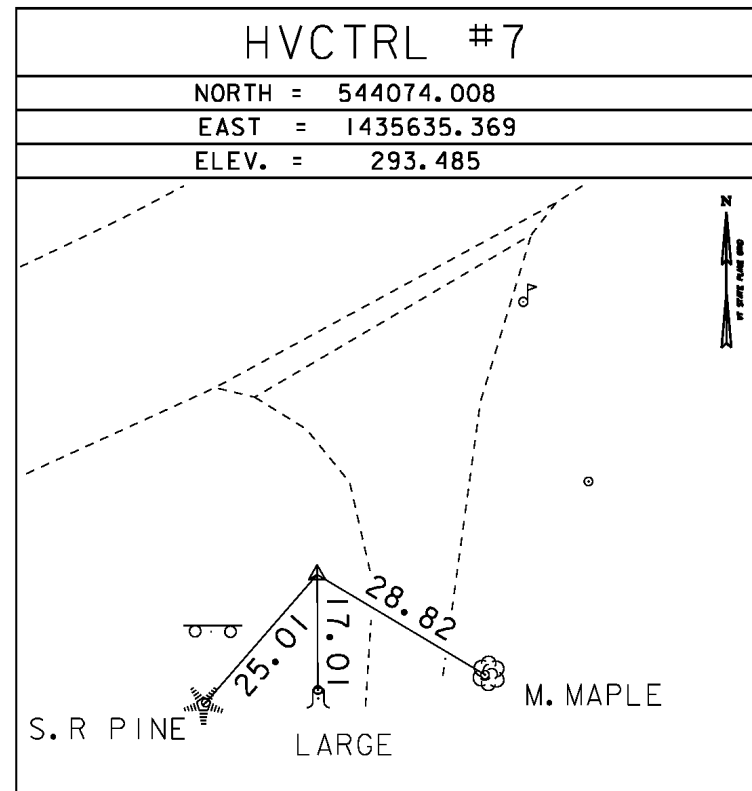
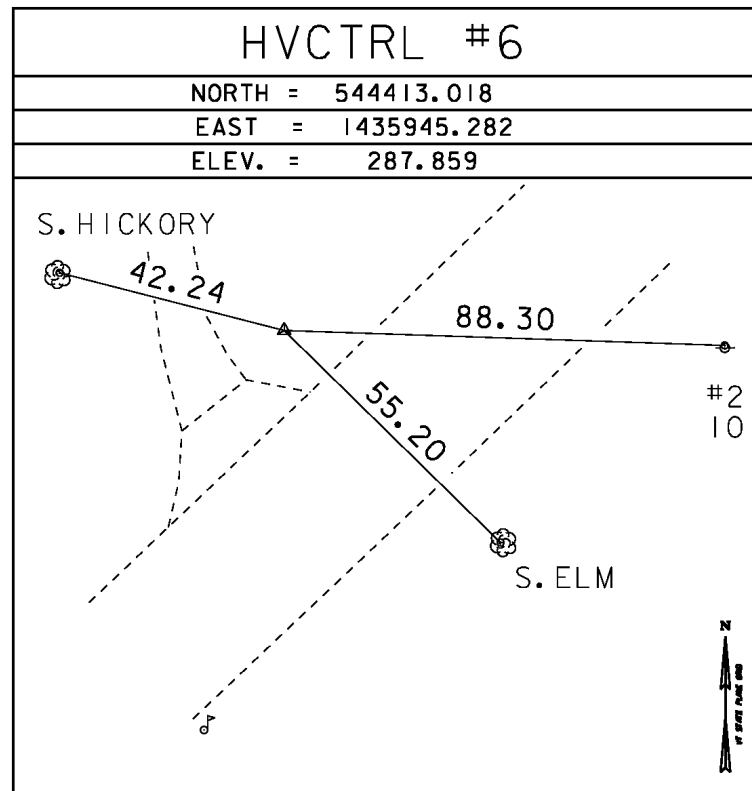
GENERAL LOCATION, 5 MI (8.0 KM) WEST OF MIDDLEBURY.
 TO REACH FROM THE JUNCTION OF VT ROUTE 30 AND VT ROUTE 125 IN MIDDLEBURY, PROCEED WEST ON ROUTE 125 FOR 4.7 MI (7.6 KM) TO A SIDE ROAD LEFT CALLED WEST ST. PROCEED SOUTH ON WEST ST FOR 0.3 MI (0.5 KM) TO A GRAVEL DRIVE AND THE MARK ON THE LEFT AND EAST. THE MARK IS LOCATED 25 FT (7.6 M) EAST OF THE CENTERLINE OF THE ROAD, 18 FT (5.5 M) NORTH OF THE CENTERLINE OF THE GRAVEL DRIVE 4 FT (1.2 M) WEST OF A FENCE CORNER, AND 2 FT (0.6 M) WEST OF A FIBERGLASS WITNESS POST.

HVCTRL #2

LEMON FAIR AZ MK
 NORTH = 546363.025
 EAST = 1440861.554
 ELEV. = 196.000

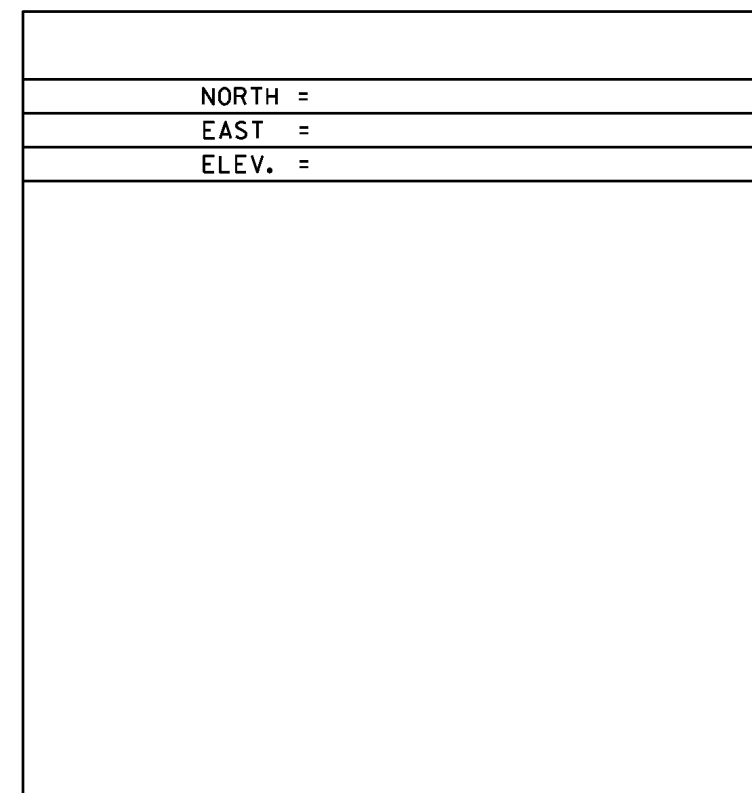
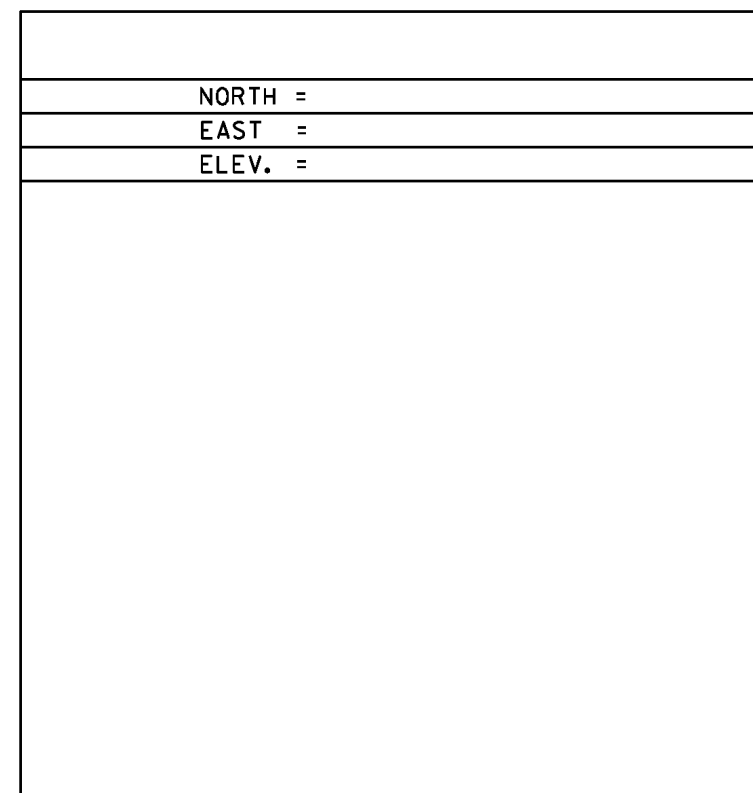
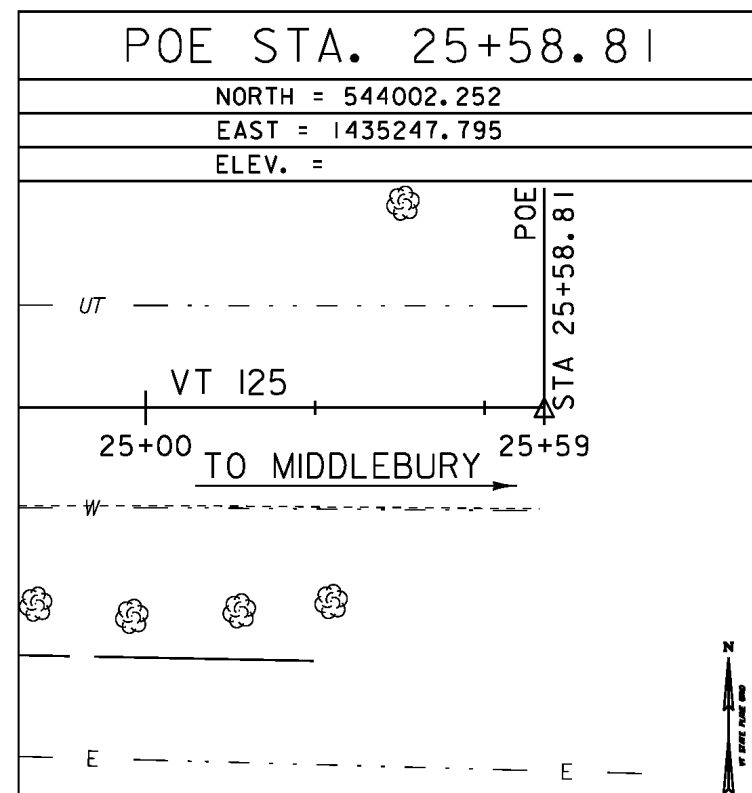
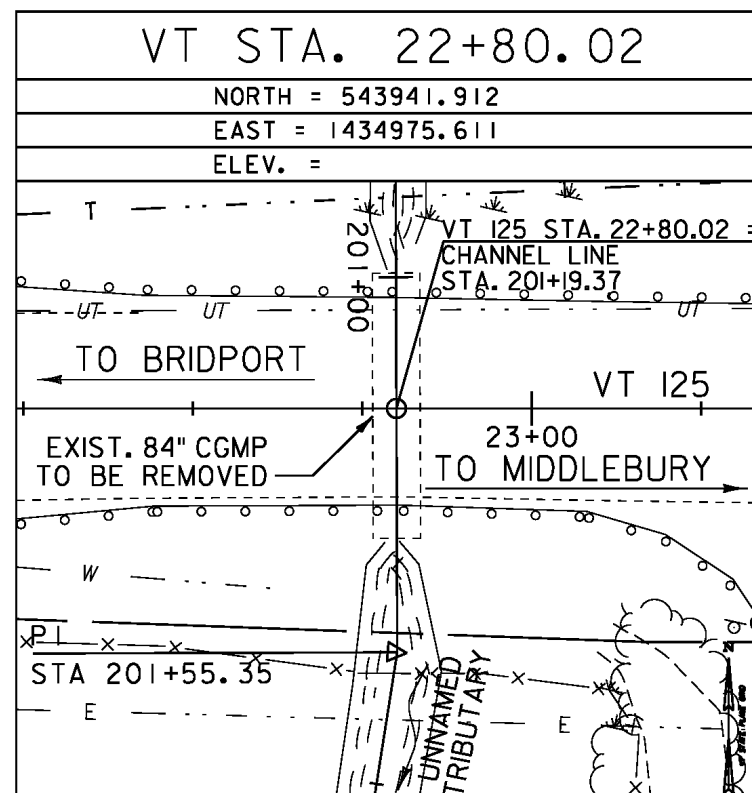
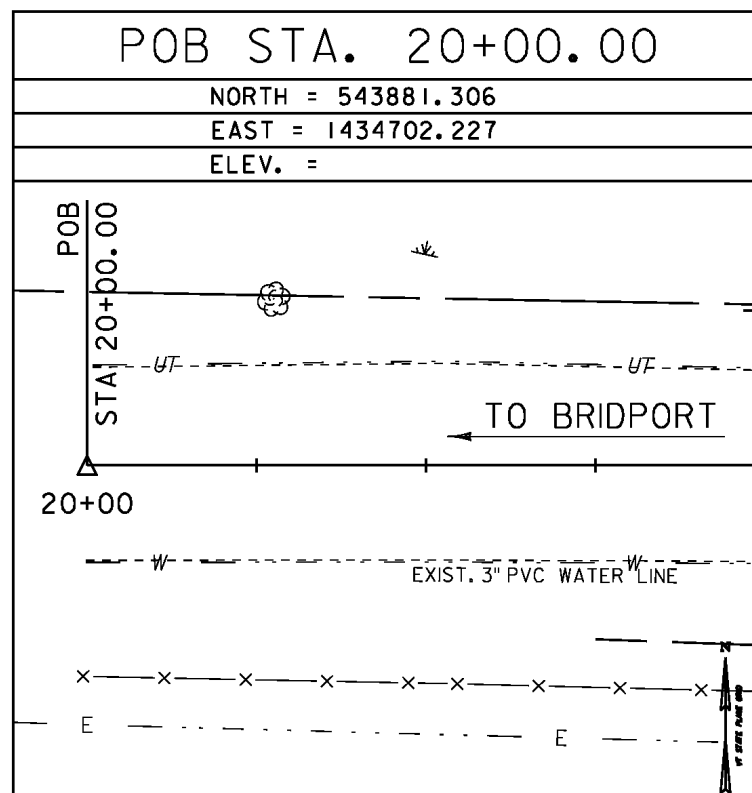
GENERAL LOCATION, 5 MI (8.0 KM) WEST OF MIDDLEBURY.
 TO REACH, FROM THE JUNCTION OF VT ROUTE 30 AND VT ROUTE 125 IN MIDDLEBURY, PROCEED WEST ON ROUTE 125 FOR 5.3 MI (8.5 KM) TO THE MARK ON THE LEFT. THE MARK IS LOCATED 315 FT (96.0 M) WEST OF THE CORNWALL/BRIDPORT TOWN LINE, 96.1 FT (29.3 M) SOUTHEAST OF UTILITY POLE NUMBER 49, 25.6 FT (7.8 M) SOUTH OF THE CENTERLINE OF ROUTE 125, AND 1 FT (0.3 M)

TRAVERSE TIES



*MAIN TRAVERSE COMPLETED 1/23/2012 BY L. ORVIS P.C & G. HITCHCOCK

ALIGNMENT TIES



DATUM	
VERTICAL	NAVD 88
HORIZONTAL	NAD 83(92)
ADJUSTMENT	COMPASS

PROJECT NAME:	BRIDPORT
PROJECT NUMBER:	STP CULV(29)
FILE NAME:	r1lc2641e_br5.dgn
PROJECT LEADER:	M. SARGENT
DESIGNED BY:	STANTEC
SURVEY CONTROL & TIES - BR5	
PLOT DATE:	11-FEB-2014
DRAWN BY:	STANTEC
CHECKED BY:	STANTEC
SHEET	7 OF 12