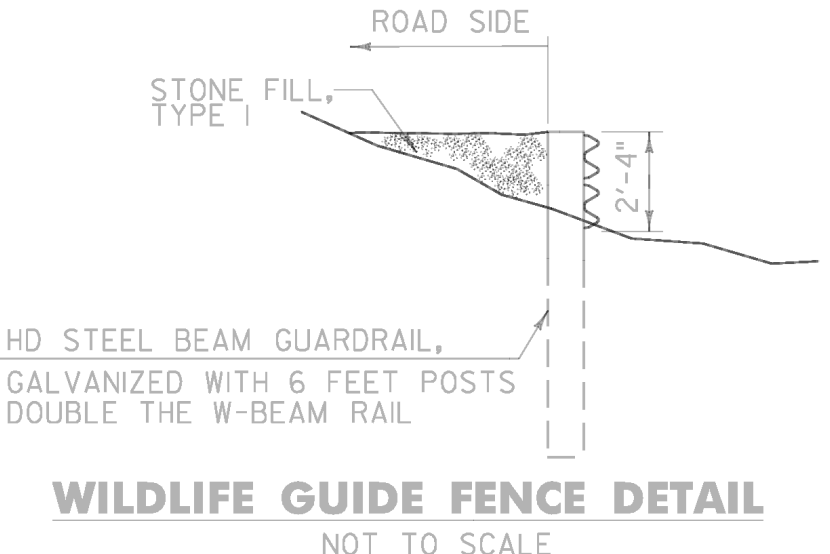
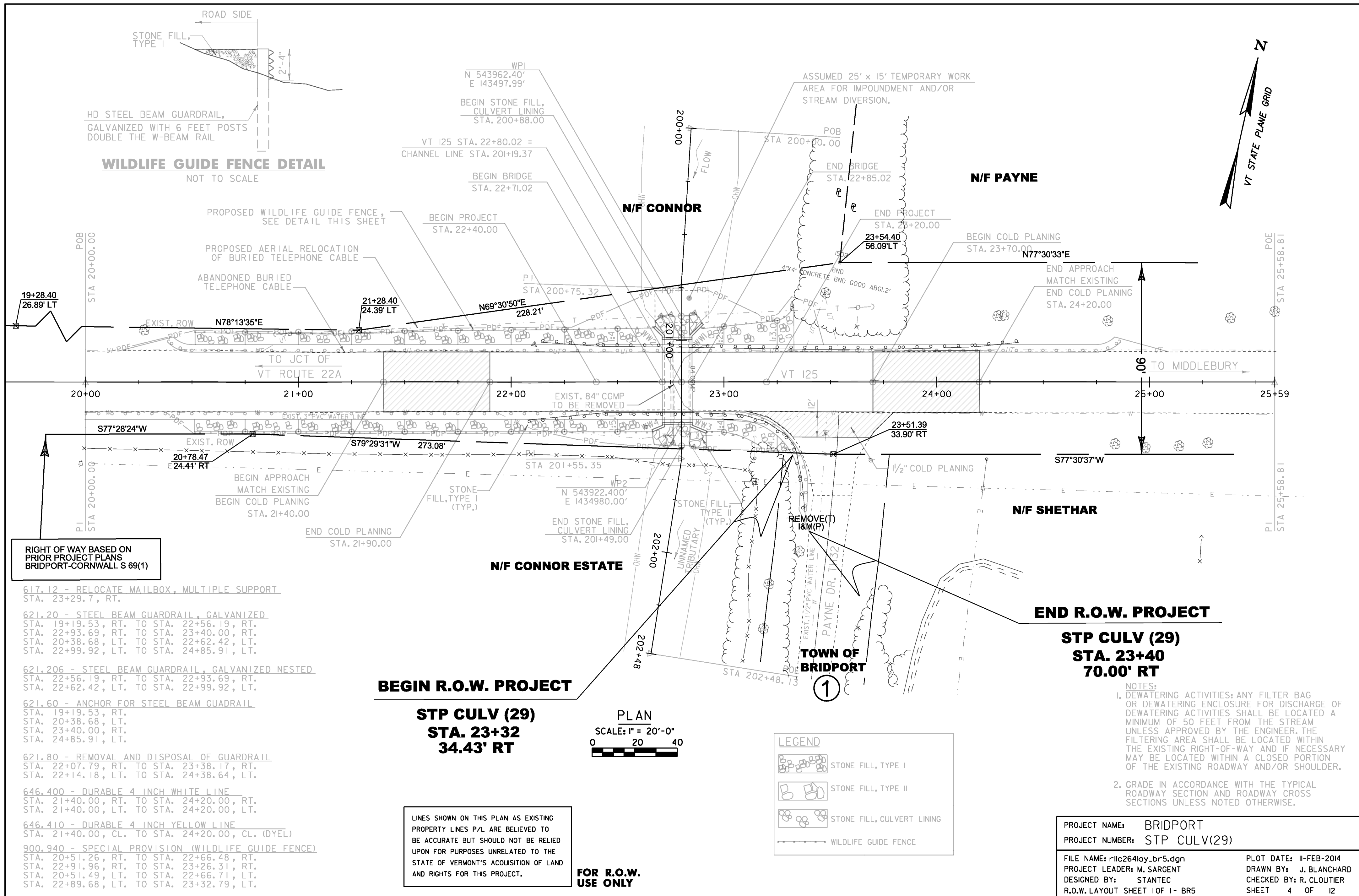


Original Drawing - Ink on polymer meeting the requirements of 27 V.S.A. § 1403

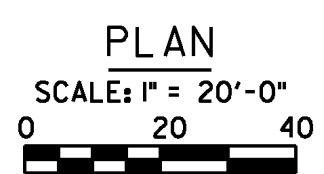


RIGHT OF WAY BASED ON PRIOR PROJECT PLANS BRIDPORT-CORNWALL S 69(1)

- 617.12 - RELOCATE MAILBOX, MULTIPLE SUPPORT  
STA. 23+29.7, RT.
- 621.20 - STEEL BEAM GUARDRAIL, GALVANIZED  
STA. 19+19.53, RT. TO STA. 22+56.19, RT.  
STA. 22+93.69, RT. TO STA. 23+40.00, RT.  
STA. 20+38.68, LT. TO STA. 22+62.42, LT.  
STA. 22+99.92, LT. TO STA. 24+85.91, LT.
- 621.206 - STEEL BEAM GUARDRAIL, GALVANIZED NESTED  
STA. 22+56.19, RT. TO STA. 22+93.69, RT.  
STA. 22+62.42, LT. TO STA. 22+99.92, LT.
- 621.60 - ANCHOR FOR STEEL BEAM GUARDRAIL  
STA. 19+19.53, RT.  
STA. 20+38.68, LT.  
STA. 23+40.00, RT.  
STA. 24+85.91, LT.
- 621.80 - REMOVAL AND DISPOSAL OF GUARDRAIL  
STA. 22+07.79, RT. TO STA. 23+38.17, RT.  
STA. 22+14.18, LT. TO STA. 24+38.64, LT.
- 646.400 - DURABLE 4 INCH WHITE LINE  
STA. 21+40.00, RT. TO STA. 24+20.00, RT.  
STA. 21+40.00, LT. TO STA. 24+20.00, LT.
- 646.410 - DURABLE 4 INCH YELLOW LINE  
STA. 21+40.00, CL. TO STA. 24+20.00, CL. (DYEL)
- 900.940 - SPECIAL PROVISION (WILDLIFE GUIDE FENCE)  
STA. 20+51.26, RT. TO STA. 22+66.48, RT.  
STA. 22+91.96, RT. TO STA. 23+26.31, RT.  
STA. 20+51.49, LT. TO STA. 22+66.71, LT.  
STA. 22+89.68, LT. TO STA. 23+32.79, LT.

LINES SHOWN ON THIS PLAN AS EXISTING PROPERTY LINES P/L ARE BELIEVED TO BE ACCURATE BUT SHOULD NOT BE RELIED UPON FOR PURPOSES UNRELATED TO THE STATE OF VERMONT'S ACQUISITION OF LAND AND RIGHTS FOR THIS PROJECT.

**FOR R.O.W. USE ONLY**



LEGEND	
	STONE FILL, TYPE I
	STONE FILL, TYPE II
	STONE FILL, CULVERT LINING
	WILDLIFE GUIDE FENCE

**END R.O.W. PROJECT**

**STP CULV (29)  
STA. 23+40  
70.00' RT**

- NOTES:
1. DEWATERING ACTIVITIES: ANY FILTER BAG OR DEWATERING ENCLOSURE FOR DISCHARGE OF DEWATERING ACTIVITIES SHALL BE LOCATED A MINIMUM OF 50 FEET FROM THE STREAM UNLESS APPROVED BY THE ENGINEER. THE FILTERING AREA SHALL BE LOCATED WITHIN THE EXISTING RIGHT-OF-WAY AND IF NECESSARY MAY BE LOCATED WITHIN A CLOSED PORTION OF THE EXISTING ROADWAY AND/OR SHOULDER.
  2. GRADE IN ACCORDANCE WITH THE TYPICAL ROADWAY SECTION AND ROADWAY CROSS SECTIONS UNLESS NOTED OTHERWISE.

PROJECT NAME: BRIDPORT	PLOT DATE: 11-FEB-2014
PROJECT NUMBER: STP CULV(29)	DRAWN BY: J. BLANCHARD
FILE NAME: r11c264lay_br5.dgn	CHECKED BY: R. CLOUTIER
PROJECT LEADER: M. SARGENT	SHEET 4 OF 12
DESIGNED BY: STANTEC	
R.O.W. LAYOUT SHEET 1 OF 1 - BR5	