

Original Drawing - Ink on polymer meeting the requirements of 27 V.S.A. § 1403

STATE OF VERMONT AGENCY OF TRANSPORTATION



R.O.W. PLANS

PROPOSED IMPROVEMENT BRIDGE PROJECT

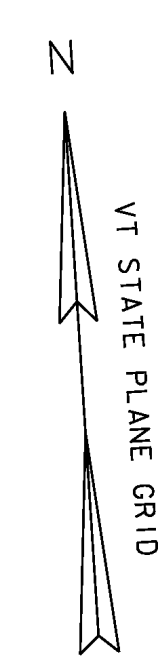
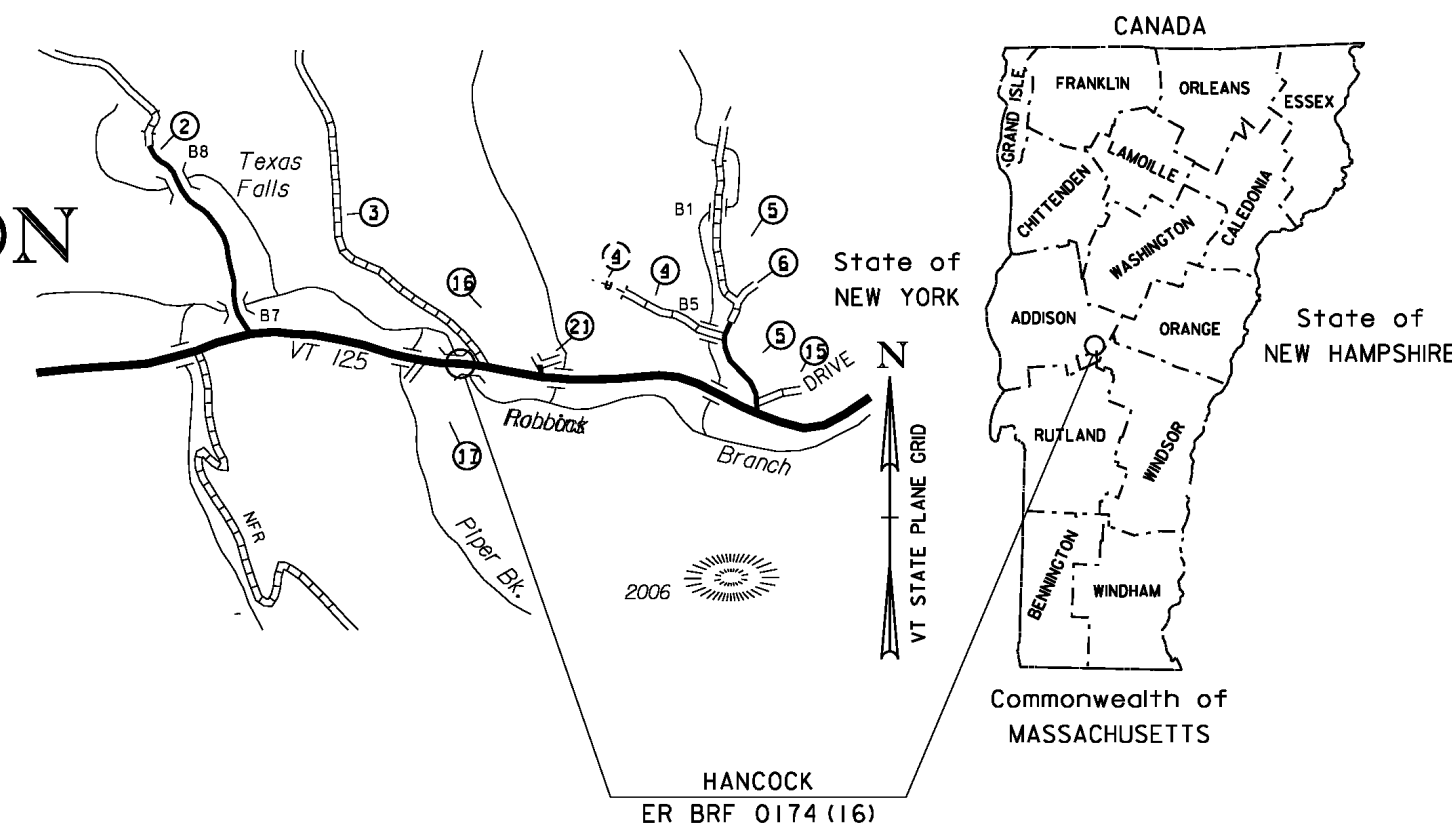
TOWN OF HANCOCK
COUNTY OF ADDISON

ROUTE NO: VT 125, MAJOR COLLECTOR BRIDGE NO: 23

PROJECT LOCATION: BEGINNING AT A POINT APPROXIMATELY 2.2 MILES WEST OF THE JUNCTION OF VT 125 AND VT 100 AND EXTENDING EASTERLY 275 FEET ALONG VT 125.

PROJECT DESCRIPTION: REPLACEMENT OF THE EXISTING BRIDGE WITH A NEW BRIDGE ON THE EXISTING ALIGNMENT WITH NECESSARY ROADWAY AND CHANNEL WORK.

LENGTH OF STRUCTURE: 72.66 FEET
LENGTH OF ROADWAY: 202.34 FEET
LENGTH OF PROJECT: 275.00 FEET
LENGTH OF ROW PROJECT: 425.08 FEET



BEGIN ROW PROJECT
ER BRF 0174(16)
STA. 266+00.00 CL

BEGIN ROW PROJECT
ER BRF 0174(16)
STA. 270+25.08 CL

BEGIN BRIDGE
STA 267+31.67

END BRIDGE
STA 268+04.33

END PROJECT
STA 269+50.00

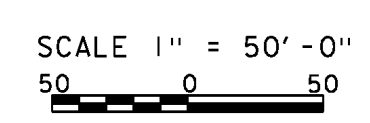
BEGIN PROJECT
STA 266+75.00

CONVENTIONAL SYMBOLS	
COUNTY LINE	
TOWN LINE	
LIMITS OF ACCESS	
POINT OF ACCESS	
FENCE LINE	
STONE WALL	
TRAVELED WAY	
GUARD RAIL	
RAILROAD	
SURVEY LINE	
CULVERT	
POWER POLE	
TELEPHONE POLE	
TREES	
CONTROL OF ACCESS	
PROPERTY LINE	
R.O.W. TAKING LINE	
SLOPE RIGHTS	
TOP OF CUT	
TOE OF SLOPE	

ALL DRIVES AS INDICATED ON PLANS ARE SUBJECT TO PERMITS PURSUANT TO TITLE 19 V.S.A. § 1111.

SURVEYED BY : L. ORVIS
SURVEYED DATE : 10-30-2011

DATUM
VERTICAL NAVD 88
HORIZONTAL NAD 83 (CORS)



THESE PLANS ARE SUBJECT TO SUCH ENGINEERING CHANGES AS MAY BE REQUIRED BY THE FEDERAL HIGHWAY ADMINISTRATION OR THE DIRECTOR OF PROGRAM DEVELOPMENT.

CONSTRUCTION IS TO BE CARRIED ON IN ACCORDANCE WITH THESE PLANS AND THE STANDARD SPECIFICATIONS FOR CONSTRUCTION DATED 2011, AS APPROVED BY THE FEDERAL HIGHWAY ADMINISTRATION ON JULY 20, 2011 FOR USE ON THIS PROJECT, INCLUDING ALL SUBSEQUENT REVISIONS AND SUCH REVISED SPECIFICATIONS AND SPECIAL PROVISIONS AS ARE INCORPORATED IN THESE PLANS.

APPROVED RICHARD TETREALT DATE 06-14-12
Director of Program Development

APPROVED ROBERT M. WHITE DATE 06-14-12
Chief of Right of Way

HANCOCK
ER BRF 0174(16)
ROW SHEET 1 OF 10 SHEETS

Original Drawing - Ink on polymer meeting the requirements of 27 V.S.A. § 1403

4 INCH WHITE LINE
STA 266+00 - 268+35 LT
STA 268+75 - 270+25 LT
STA 266+00 - 270+25 RT

4 INCH YELLOW LINE (DOUBLE CENTERLINE)
STA 266+00 - 268+35 LT/RT
STA 268+75 - 270+25 LT/RT

CLEANING CULV. PIPE, IN-PLACE (0 TO 24 IN., INCL.)
STA 266+08.65 - 266+68.65 LT

REHAB. DROP INLETS, CATCH BASINS, OR MANHOLES, CLASS III
STA 266+08.65 LT

SQUARE TUBE SIGN POST AND ANCHOR
STA 267+15.00 RT
STA 268+17.00 LT

REMOVAL AND DISPOSAL OF GUARDRAIL
STA. 266+67.20 TO 267+26.56 RT
STA. 266+90.66 TO 267+26.56 LT
STA. 268+07.69 TO 268+39.86 LT
STA. 268+07.69 TO 268+92.80 RT

REMOVING LARGE TREES
STA 268+25 LT
STA 268+35 LT
STA 268+40 LT
STA 268+69 LT

TRAFFIC SIGNS, TYPE A
STA 267+15.00 RT
STA 268+17.00 LT

ENGLEHARDT JR., WALTER A.

HODGETTS, KATHERINE

PERERA, THOMAS B. & GRETCHEN

VEILLEUX, JACQUES

PERERA, THOMAS B. & GRETCHEN

MAINLINE CURVE (1)
DELTA = 5°59'36"
D = 1°19'57"
R = 4300.00'
T = 225.10'
L = 449.78'
E = 5.89'

MAINLINE CURVE (2)
DELTA = 6°42'51"
D = 2°23'14"
R = 2400.00'
T = 140.78'
L = 281.24'
E = 4.13'

BEGIN BRIDGE
STA 267+31.67
FG 1043.93

SCALE 1" = 20'-0"
20 0 20

FOR R.O.W. USE ONLY

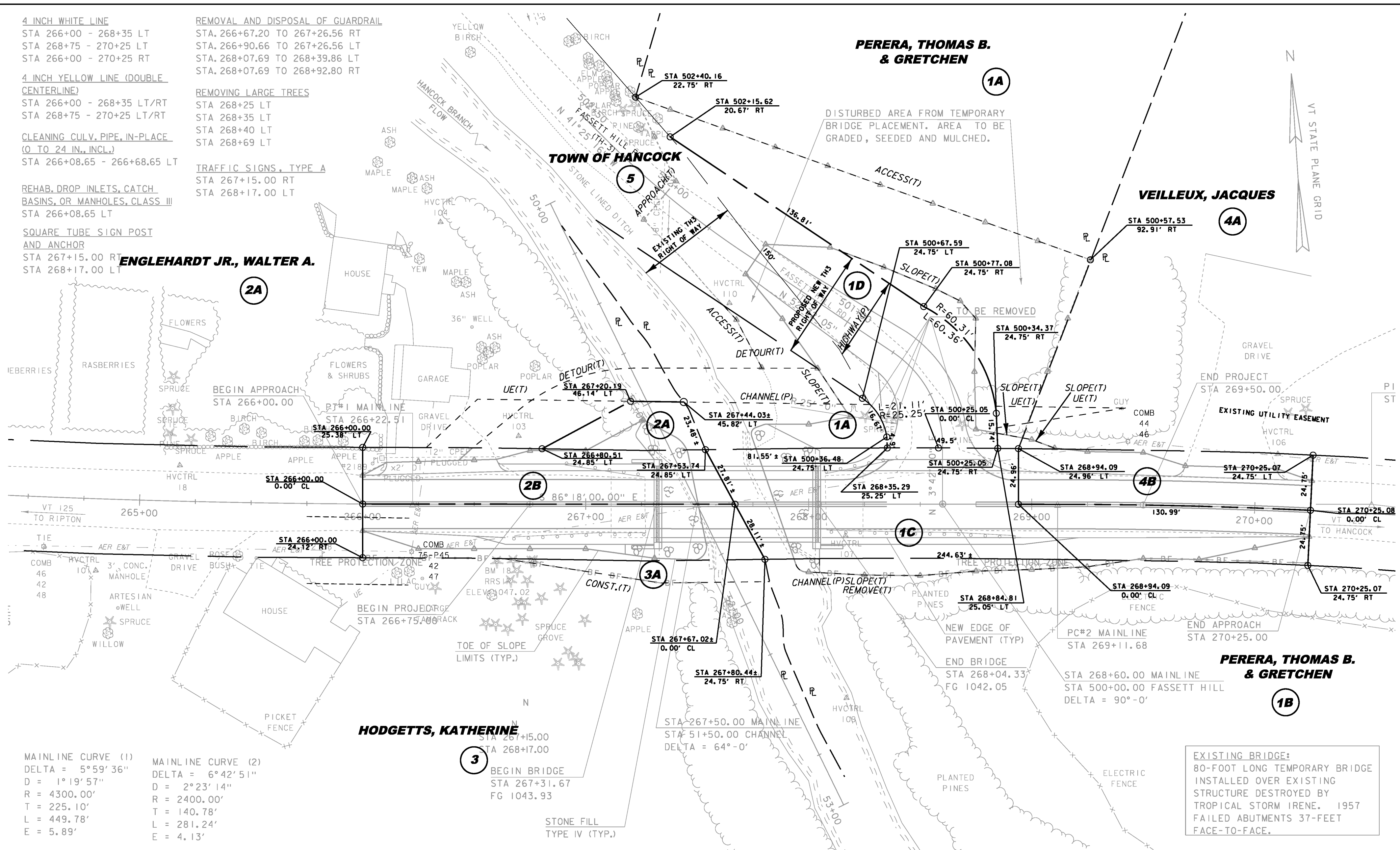
LINES SHOWN ON THIS PLAN AS EXISTING PROPERTY LINES P/L ARE BELIEVED TO BE ACCURATE BUT SHOULD NOT BE RELIED UPON FOR PURPOSES UNRELATED TO THE STATE OF VERMONT'S ACQUISITION OF LAND AND RIGHTS FOR THIS PROJECT.

PROJECT NAME: HANCOCK
PROJECT NUMBER: ER BRF 0174(16)

FILE NAME: r11c210_layout.dgn
PROJECT LEADER: K. HIGGINS
DESIGNED BY: J. SALVATORI
ROW LAYOUT SHEET 1 OF 1

PLOT DATE: 20-JUL-2012
DRAWN BY: J. BLANCHARD
CHECKED BY: H. PETROVS
SHEET 4 OF 10

EXISTING BRIDGE:
80-FOOT LONG TEMPORARY BRIDGE
INSTALLED OVER EXISTING
STRUCTURE DESTROYED BY
TROPICAL STORM IRENE, 1957
FAILED ABUTMENTS 37-FEET
FACE-TO-FACE.



GPS CONTROL POINTS

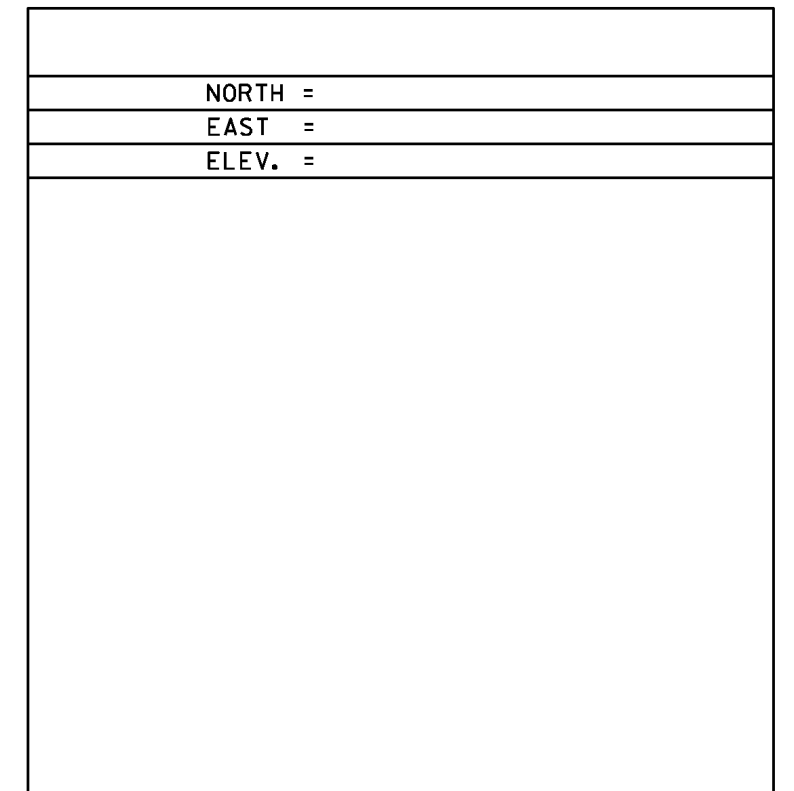
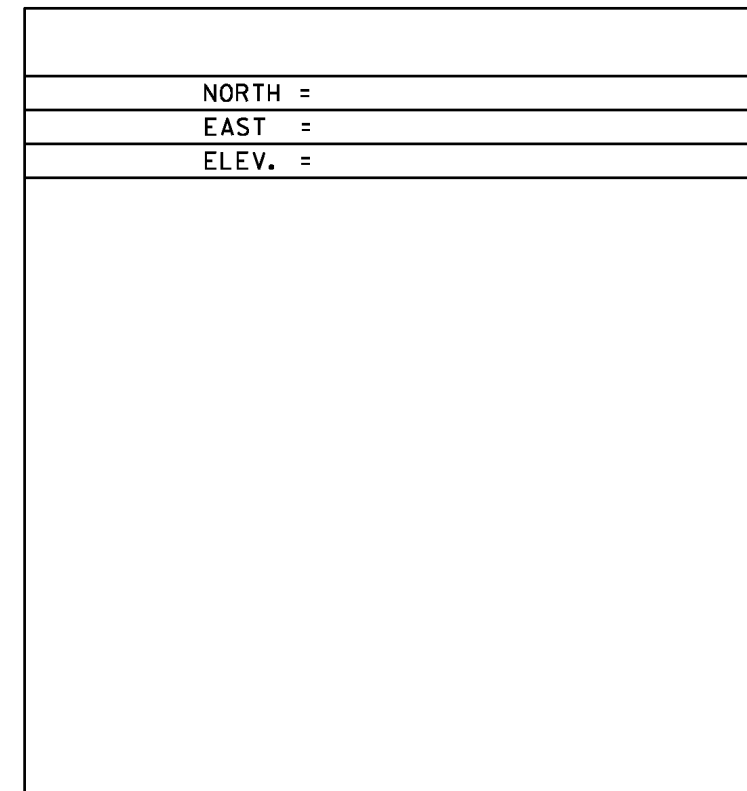
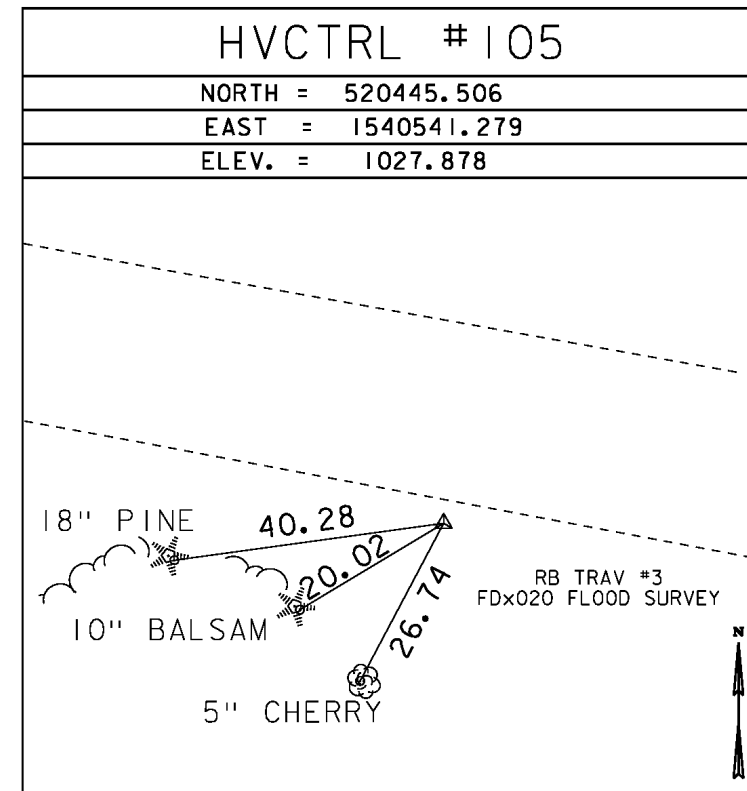
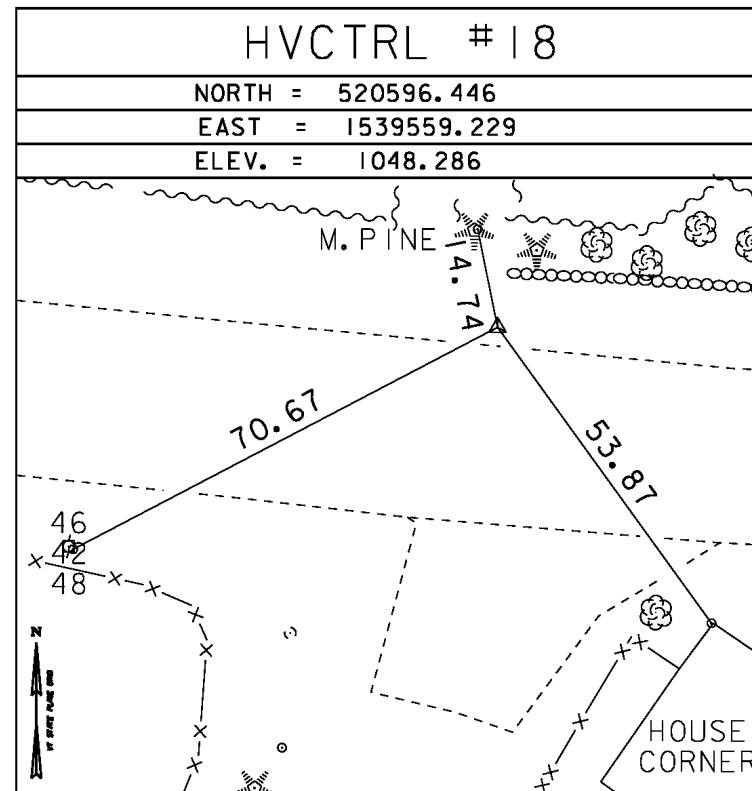
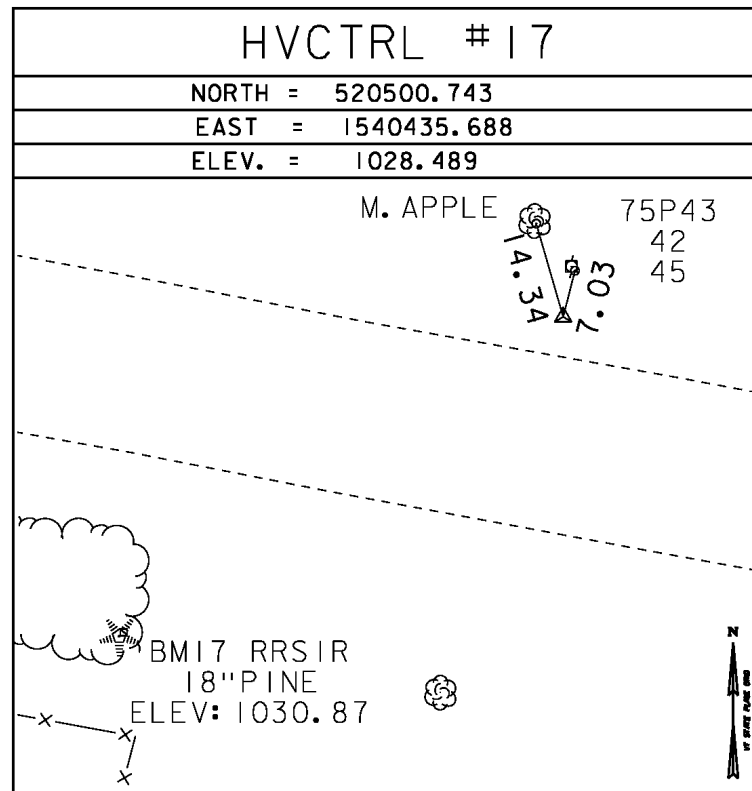
HVCTRL #1
 CHESAPEAKE AZ
 NORTH = 519927.584
 EAST = 1550533.162
 ELEV. = 913.226

GENERAL LOCATION, HANCOCK, VT.
 TO REACH FROM THE INTERSECTION OF VT.ROUTE 100 AND VT.ROUTE 125 IN HANCOCK GO SOUTH ALONG VT.ROUTE 100 FOR ABOUT 25 M (82.0 FT) TO THE NORTH END OF THE VT.ROUTE 100 BRIDGE OVER ROBBINS BRANCH AND THE SITE OF THE MARK ON THE RIGHT SET IN THE TOP OF THE ABUTMENT AT THE NORTHWEST CORNER OF THE BRIDGE. THE MARK IS 5.6 M (18.4 FT) WEST OF AND ABOUT LEVEL WITH THE CENTERLINE OF VT.ROUTE 100, 0.4 M (1.3 FT) NORTH OF THE SOUTH FACE OF THE ABUTMENT, AND 0.4 M (1.3 FT) SOUTH OF A FIBERGLASS WITNESS POST

HVCTRL #2
 CHESAPEAKE
 NORTH = 517723.725
 EAST = 1550889.382
 ELEV. = 894.026

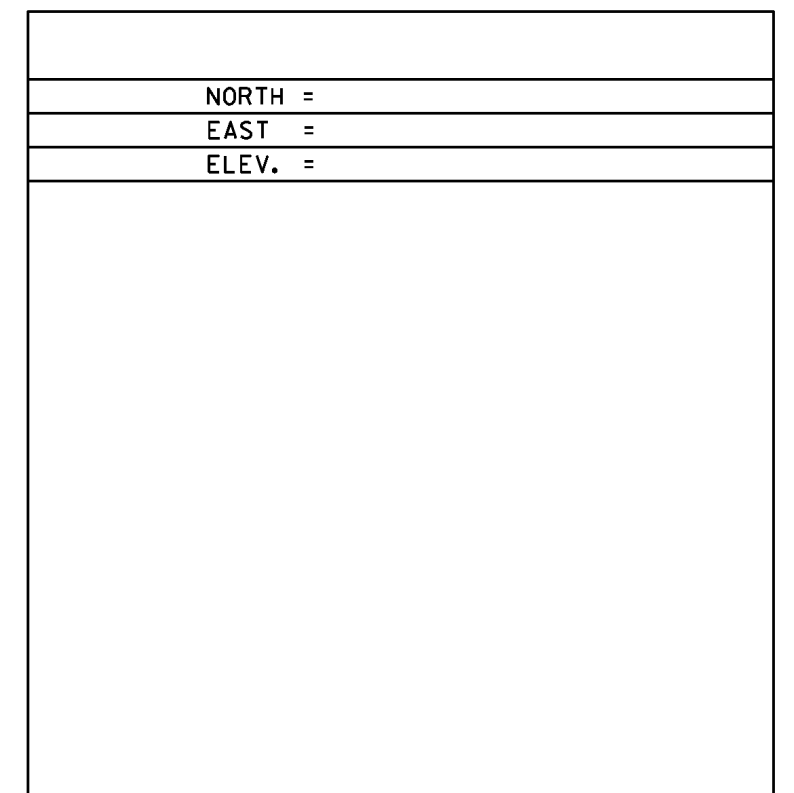
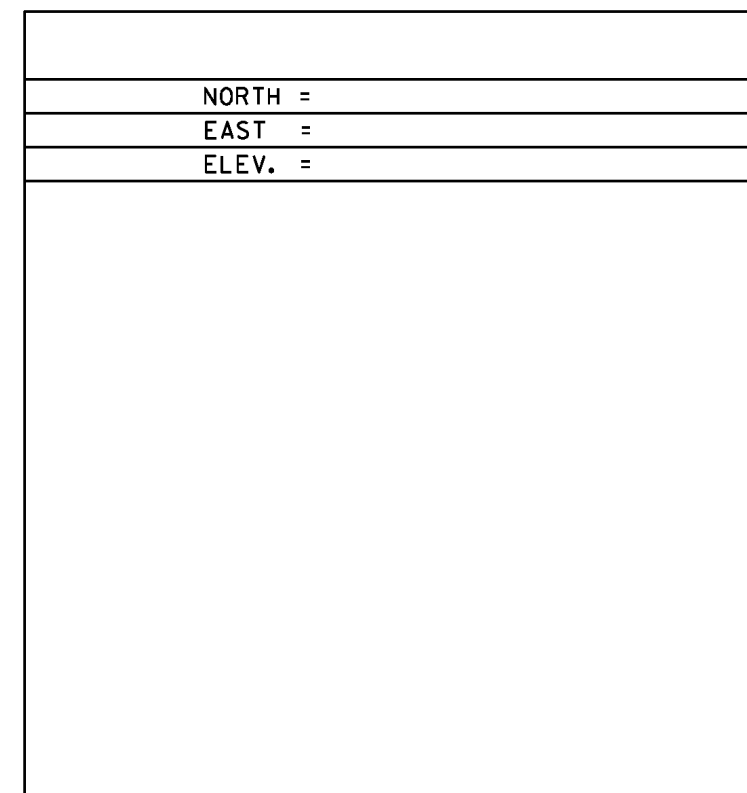
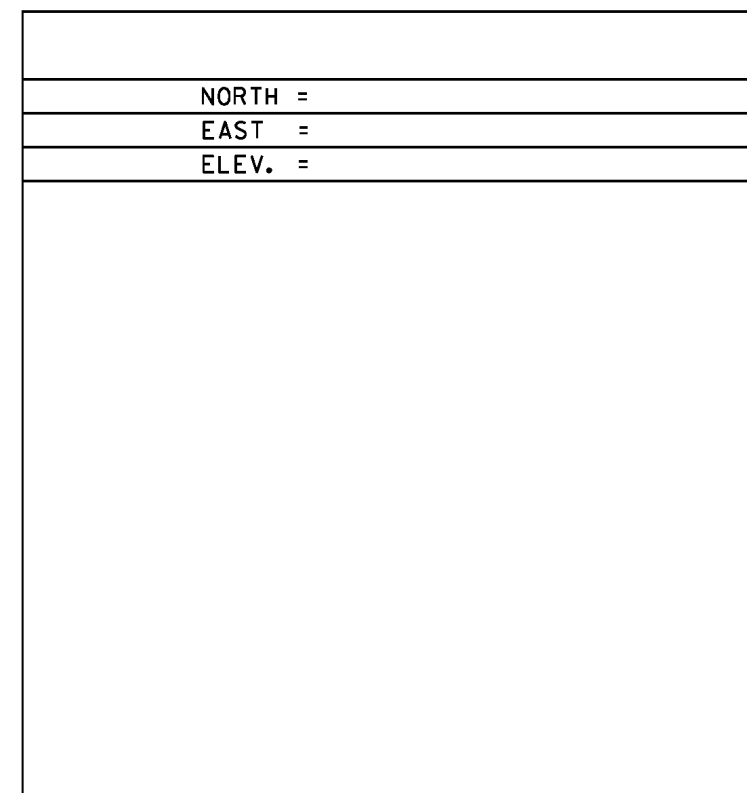
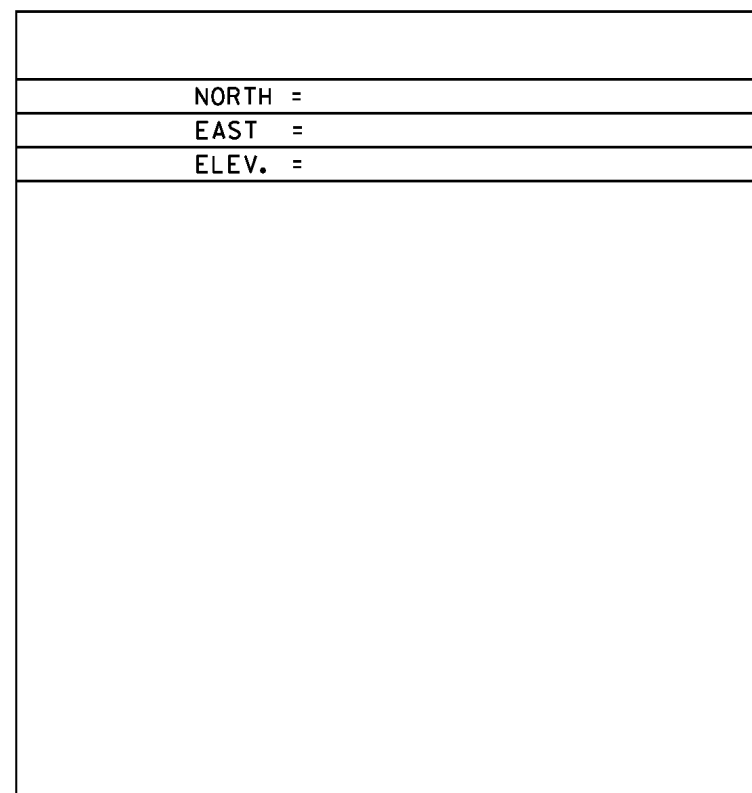
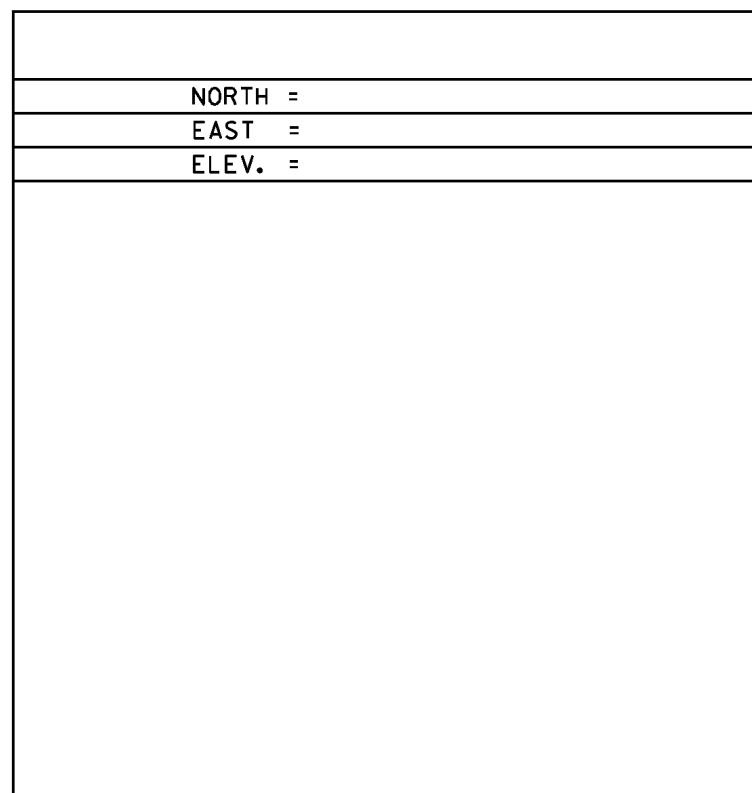
GENERAL LOCATION, HANCOCK, VT.
 TO REACH FROM THE INTERSECTION OF VT.ROUTE 100 AND VT.ROUTE 125 IN HANCOCK GO SOUTH ALONG VT.ROUTE 100 FOR 0.4 MI (0.6 KM) TO THE MARK ON THE LEFT. ABOUT 200 FEET (61.0 M) NORTH OF THE HANCOCK FIRE DEPT. THE MARK IS SET 2 CM BELOW THE GROUND SURFACE IN THE TOP OF A 30 CM DIAMETER CONCRETE MONUMENT SET 1.4 M (4.6 FT) DEEP. IT IS 3.6 M (11.8 FT) EAST OF AND ABOUT 0.2 M (0.7 FT) LOWER THAN THE EAST EDGE OF PAVEMENT OF VT.ROUTE 100, 17.2 M (56.4 FT) SOUTH OF POLE NO.88/2, 3.6 M (11.8 FT) NORTHWEST OF THE SOUTHWEST CORNER OF A 1.3 M (4.3 FT) HIGH CHAINLINK FENCE SURROUNDING A RECREATIONAL AREA, 11.2 M (36.7 FT) NORTH OF A 0.5 M (1.6 FT) SQUARE DROP INLET, AND 1.3 M (4.3 FT) EAST OF THE CHAINLINK FENCE AND A FIBERGLASS WITNESS POST.

TRAVERSE TIES



*MAIN TRAVERSE COMPLETED 10/30/2011 [SEE 10C252T]BY L.ORVIS P.C. & G.HITCHCOCK

ALIGNMENT TIES



DATUM	
VERTICAL	NAVD 88
HORIZONTAL	NAD 83 (CORS)
ADJUSTMENT	COMPASS

PROJECT NAME:	HANCOCK
PROJECT NUMBER:	ER-BRF 017 (16)
FILE NAME:	survey\11C2101.dgn
PROJECT LEADER:	K. HIGGINS
DESIGNED BY:	W. LAMMER
TIE SHEET	
PLOT DATE:	20-JUL-2012
DRAWN BY:	R. BULLOCK
CHECKED BY:	W. LAMMER
SHEET	8 OF 10