

NOTES:

1) PIPE OPTION 1 SHALL BE THE CONTRACTORS OPTION FOR EITHER CAAP OR PCCSP

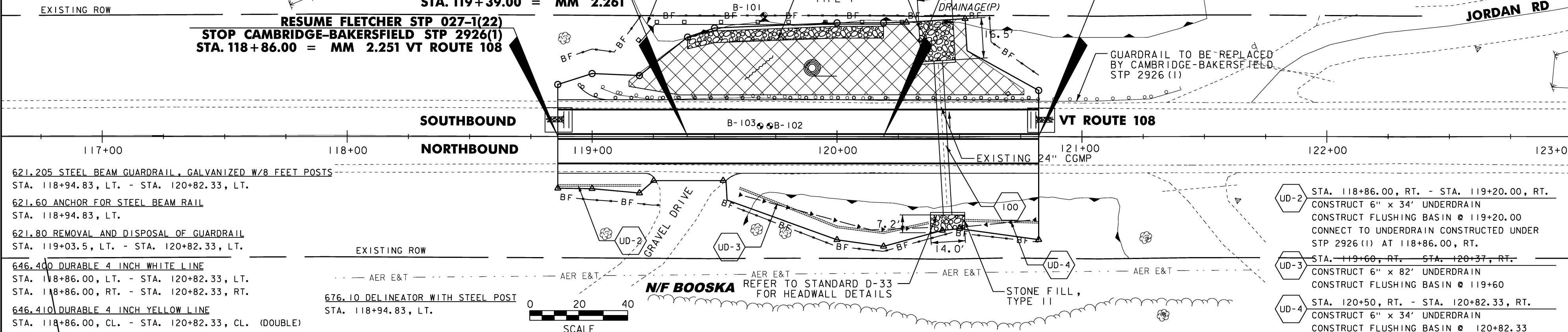
100 STA. 120+41.0, LT. - STA. 120+45.0, RT.  
 CONSTRUCT 42" x 64' PIPE OPTION 1  
 CONSTRUCT HEADWALL @ INLET AND OUTLET  
 CONSTRUCT STONE FILL TYPE II INLET AND OUTLET PROTECTION  
 INVERT IN = 457.87  
 INVERT OUT = 454.48

1 NEWBURY III, GEORGE END FULL DEPTH CONSTRUCTION  
 STA. 120+19.00 = MM 2.276

END FLETCHER STP 027-1(22)  
 RESUME CAMBRIDGE-BAKERSFIELD STP 2926(1)  
 STA. 120+82.33 = MM 2.288 VT ROUTE 108

BEGIN FULL DEPTH CONSTRUCTION  
 STA. 119+39.00 = MM 2.261

RESUME FLETCHER STP 027-1(22)  
 STOP CAMBRIDGE-BAKERSFIELD STP 2926(1)  
 STA. 118+86.00 = MM 2.251 VT ROUTE 108



621.205 STEEL BEAM GUARDRAIL, GALVANIZED W/8 FEET POSTS  
 STA. 118+94.83, LT. - STA. 120+82.33, LT.

621.60 ANCHOR FOR STEEL BEAM RAIL  
 STA. 118+94.83, LT.

621.80 REMOVAL AND DISPOSAL OF GUARDRAIL  
 STA. 119+03.5, LT. - STA. 120+82.33, LT.

646.400 DURABLE 4 INCH WHITE LINE  
 STA. 118+86.00, LT. - STA. 120+82.33, LT.  
 STA. 118+86.00, RT. - STA. 120+82.33, RT.

646.410 DURABLE 4 INCH YELLOW LINE  
 STA. 118+86.00, CL. - STA. 120+82.33, CL. (DOUBLE)

676.10 DELINEATOR WITH STEEL POST  
 STA. 118+94.83, LT.

UD-2 STA. 118+86.00, RT. - STA. 119+20.00, RT.  
 CONSTRUCT 6" x 34" UNDERDRAIN  
 CONSTRUCT FLUSHING BASIN @ 119+20.00  
 CONNECT TO UNDERDRAIN CONSTRUCTED UNDER  
 STP 2926(1) AT 118+86.00, RT.

UD-3 STA. 119+60, RT. - STA. 120+37, RT.  
 CONSTRUCT 6" x 82' UNDERDRAIN  
 CONSTRUCT FLUSHING BASIN @ 119+60

UD-4 STA. 120+50, RT. - STA. 120+82.33, RT.  
 CONSTRUCT 6" x 34" UNDERDRAIN  
 CONSTRUCT FLUSHING BASIN @ 120+82.33

N/F BOOSKA REFER TO STANDARD D-33 FOR HEADWALL DETAILS

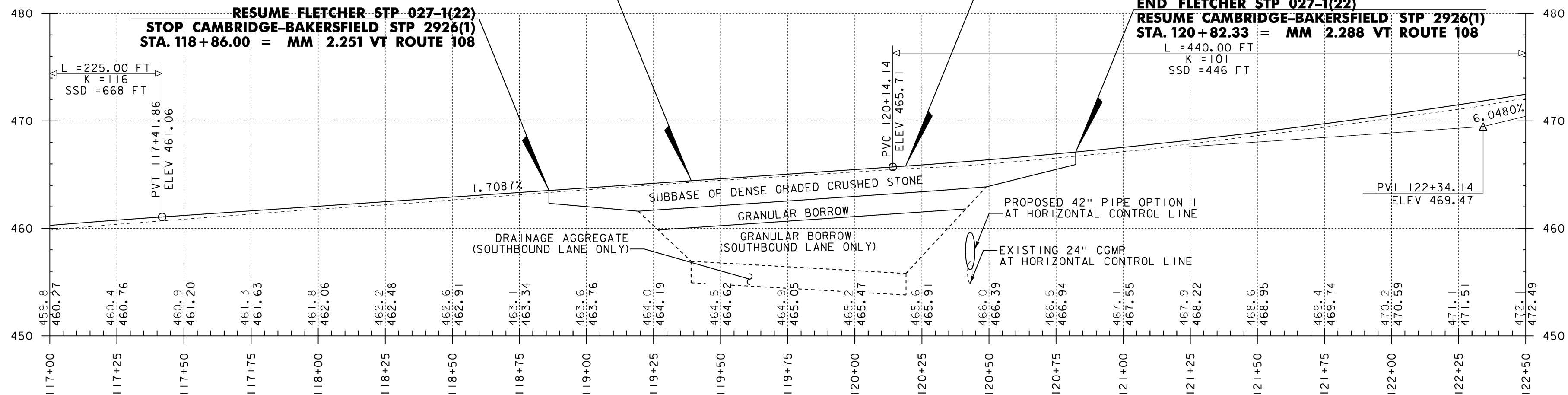
BEGIN FULL DEPTH CONSTRUCTION  
 STA. 119+39.00 = MM 2.261

END FULL DEPTH CONSTRUCTION  
 STA. 120+19.00 = MM 2.276

RESUME FLETCHER STP 027-1(22)  
 STOP CAMBRIDGE-BAKERSFIELD STP 2926(1)  
 STA. 118+86.00 = MM 2.251 VT ROUTE 108

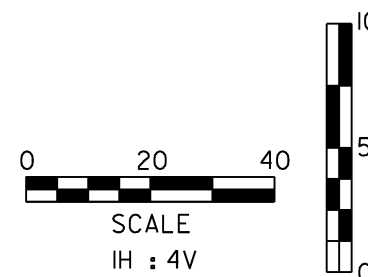
END FLETCHER STP 027-1(22)  
 RESUME CAMBRIDGE-BAKERSFIELD STP 2926(1)  
 STA. 120+82.33 = MM 2.288 VT ROUTE 108

L = 440.00 FT  
 K = 101  
 SSD = 446 FT



LINES SHOWN ON THIS PLAN AS EXISTING PROPERTY LINES P/L ARE BELIEVED TO BE ACCURATE BUT SHOULD NOT BE RELIED UPON FOR PURPOSES UNRELATED TO THE STATE OF VERMONT'S ACQUISITION OF LAND AND RIGHTS FOR THIS PROJECT.

FOR R.O.W. USE ONLY



PROJECT NAME: FLETCHER  
 PROJECT NUMBER: STP 027-1(22)

FILE NAME: r1lb064.lay2.dgn  
 PROJECT LEADER: K. ROBE  
 DESIGNED BY: STANTEC  
 ROW PLAN-PROFILE SHEET 2 OF 2

PLOT DATE: 22-AUG-2012  
 DRAWN BY: J. BLANCHARD  
 CHECKED BY: H. PETROVS  
 SHEET 4 OF 6