

Original Drawing - Ink on polymer meeting the requirements of 27 V.S.A. § 1403

R. O. W. PLANS

INDEX OF SHEETS

1	TITLE
2	LEGEND
3	DETAIL
4	LAYOUT
5	PRELIMINARY INFORMATION
6-7	TYPICAL SECTIONS
8	TIE
9	PROFILE
10	EPSC PLAN
11	PLAN & ELEVATION
12	UTILITY
13	DETOUR

STATE OF VERMONT AGENCY OF TRANSPORTATION



PROPOSED IMPROVEMENT

BRIDGE PROJECT

TOWN OF WOODSTOCK

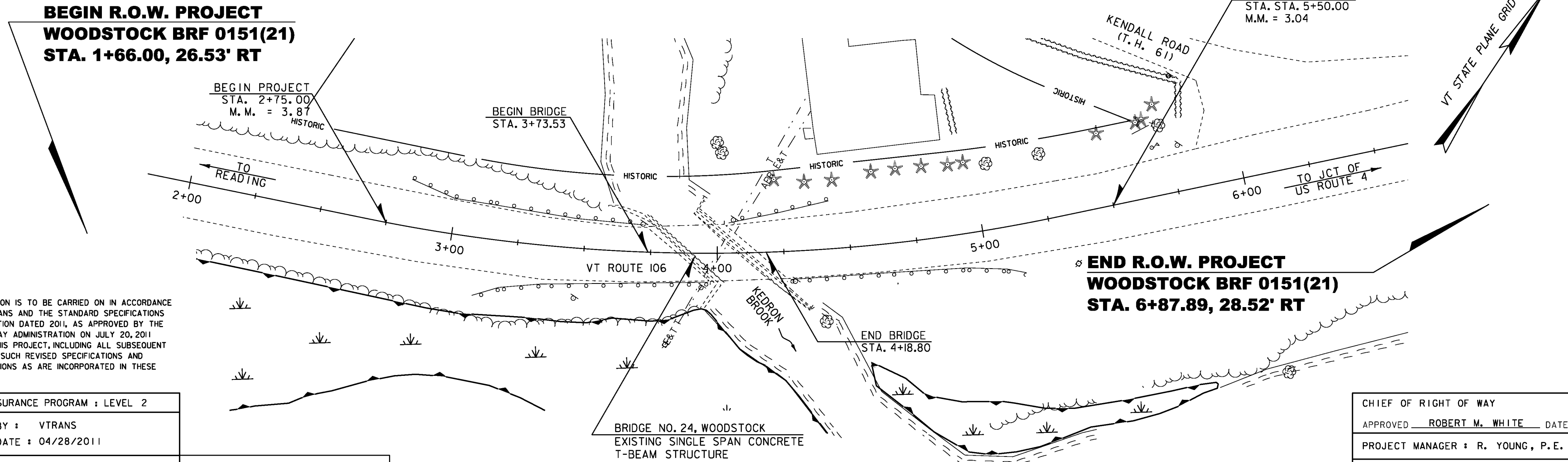
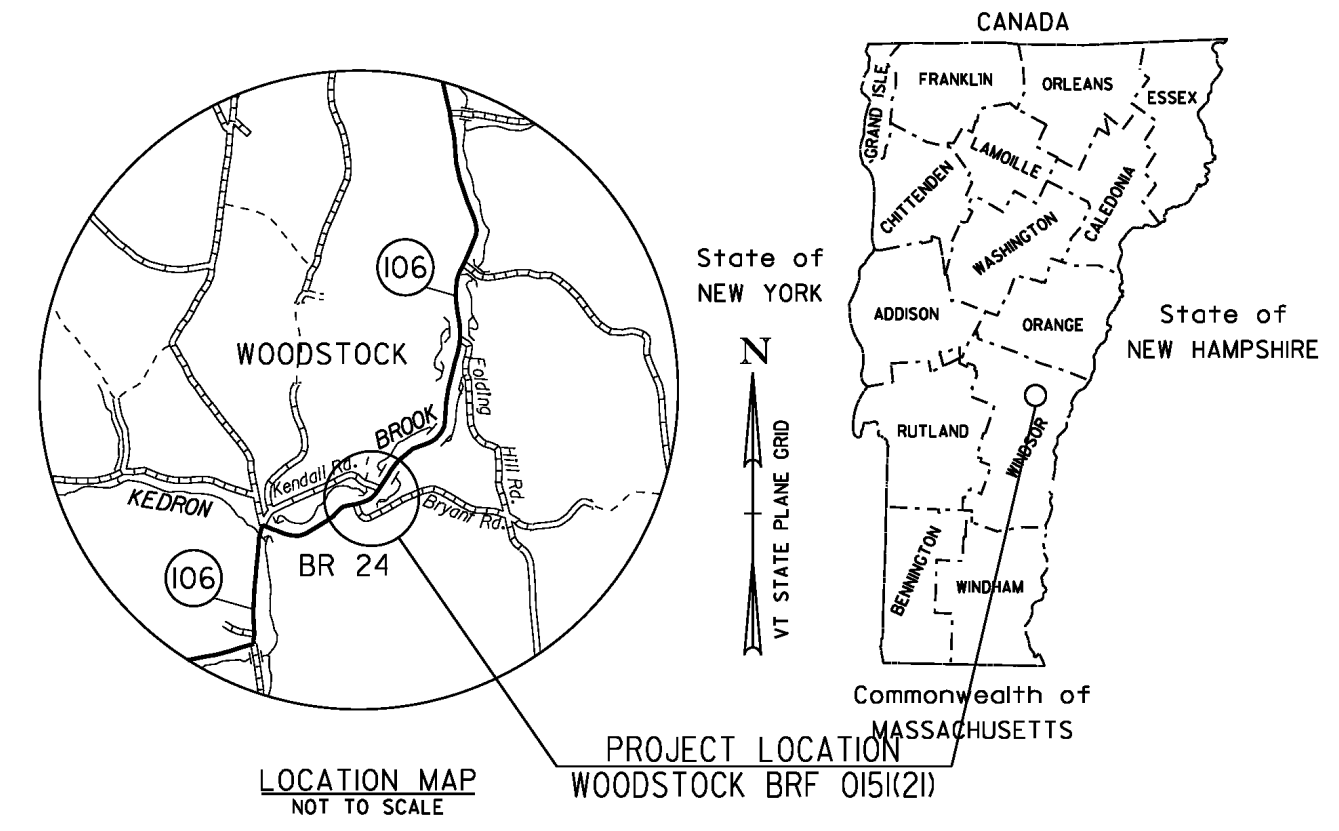
COUNTY OF WINDSOR

VERMONT ROUTE 106 (MAJOR COLLECTOR RURAL) BRIDGE NO. 24

PROJECT LOCATION: IN THE TOWN OF WOODSTOCK, VERMONT ROUTE 106 APPROXIMATELY 200 FT SOUTH OF THE INTERSECTION WITH T.H. 61 AT MILE MARKER 3.04.

PROJECT DESCRIPTION: REPLACEMENT OF EXISTING BRIDGE WITH A PRECAST CONCRETE STRUCTURE ALONG WITH RELATED ROADWAY AND CHANNEL WORK.

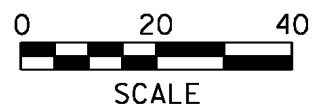
LENGTH OF BRIDGE: 45.27 FEET = 0.008 MILES
 LENGTH OF ROADWAY: 229.73 FEET = 0.044 MILES
 LENGTH OF PROJECT: 275.00 FEET = 0.052 MILES
 LENGTH OF ROW PROJECT: 521.89 FEET = 0.099 MILES



CONSTRUCTION IS TO BE CARRIED ON IN ACCORDANCE WITH THESE PLANS AND THE STANDARD SPECIFICATIONS FOR CONSTRUCTION DATED 2011, AS APPROVED BY THE FEDERAL HIGHWAY ADMINISTRATION ON JULY 20, 2011 FOR USE ON THIS PROJECT, INCLUDING ALL SUBSEQUENT REVISIONS AND SUCH REVISED SPECIFICATIONS AND SPECIAL PROVISIONS AS ARE INCORPORATED IN THESE PLANS.

QUALITY ASSURANCE PROGRAM : LEVEL 2	
SURVEYED BY : VTRANS	
SURVEYED DATE : 04/28/2011	
DATUM	
VERTICAL	NAVD 88
HORIZONTAL	NAD 83 (92)

ALL DRIVES AS INDICATED ON PLANS ARE SUBJECT TO PERMITS PURSUANT TO TITLE 19 V.S.A. § 1111.



CHIEF OF RIGHT OF WAY	
APPROVED	ROBERT M. WHITE DATE 10-08-14
PROJECT MANAGER : R. YOUNG, P.E.	
PROJECT NAME : WOODSTOCK	
PROJECT NUMBER : BR 0151 (21)	
SHEET 1 OF 13 SHEETS	

Original Drawing - Ink on polymer meeting the requirements of 27 V.S.A. § 1403

HVCTRL #1 389174.4977 N 1634481.8006 E ELEV: 1005.44'	HVCTRL #2 388828.4329 N 1634244.4975 E ELEV: 986.75'	HVCTRL #3 388900.4009 N 1634403.6064 E ELEV: 986.32'
--	---	---

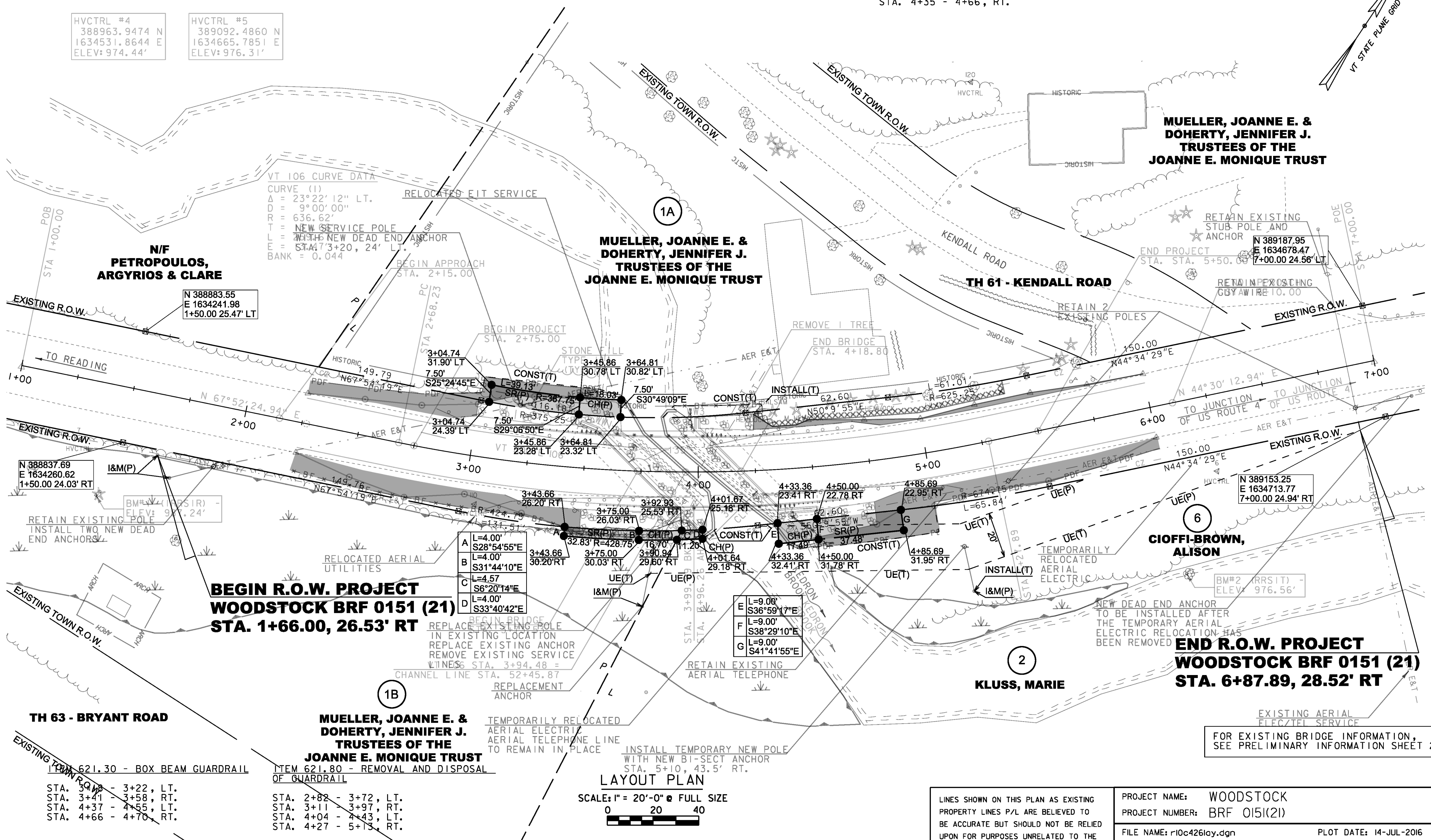
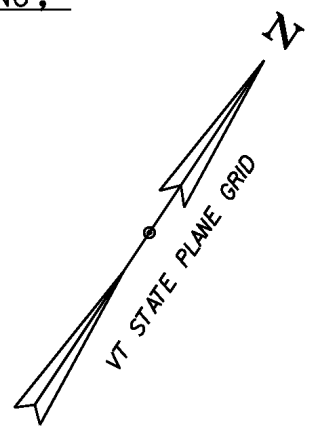
HVCTRL #4 388963.9474 N 1634531.8644 E ELEV: 974.44'	HVCTRL #5 389092.4860 N 1634665.7851 E ELEV: 976.31'
---	---

ITEM 656.85 - TREE PROTECTION
STA. 4+26 LT. - 5+40, LT.

ITEM 621.51 - MANUFACTURED TERMINAL SECTION, TANGENT (BEAT)
STA. 3+27 - 3+41, RT.
STA. 4+55 - 4+69, LT.

ITEM 621.725 - GUARDRAIL APPROACH SECTION, GALVANIZED 3 RAIL BOX BEAM
STA. 3+22 - 3+54, LT.
STA. 3+58 - 3+89, RT.
STA. 4+04 - 4+37, LT.
STA. 4+35 - 4+66, RT.

ITEM 210.10 - COLD PLANING, BITUMINOUS PAVEMENT
STA. 2+15 - 2+25
STA. 6+00 - 6+10



VT 106 CURVE DATA
CURVE (1)
Δ = 23°22'12" LT.
D = 9°00'00"
R = 636.62'
T = NEW SERVICE POLE
L = 111.16'
E = STA. 473+20, 24' LT.
BANK = 0.044

N/F PETROPOULOS, ARGYRIOS & CLARE
N 388883.55
E 1634241.98
1+50.00 25.47' LT

MUELLER, JOANNE E. & DOHERTY, JENNIFER J. TRUSTEES OF THE JOANNE E. MONIQUE TRUST

MUELLER, JOANNE E. & DOHERTY, JENNIFER J. TRUSTEES OF THE JOANNE E. MONIQUE TRUST

RETAIN EXISTING STUB POLE AND ANCHOR
N 389187.95
E 1634678.47
7+00.00 24.58' LT

BEGIN R.O.W. PROJECT WOODSTOCK BRF 0151 (21) STA. 1+66.00, 26.53' RT

END R.O.W. PROJECT WOODSTOCK BRF 0151 (21) STA. 6+87.89, 28.52' RT

A	L=4.00'	S28°54'55"E
B	L=4.00'	S31°44'10"E
C	L=4.57'	S6°20'14"E
D	L=4.00'	S33°40'42"E

E	L=9.00'	S36°59'17"E
F	L=9.00'	S38°29'10"E
G	L=9.00'	S41°41'55"E

LAYOUT PLAN
SCALE: 1" = 20'-0" @ FULL SIZE
0 20 40

ITEM 621.30 - BOX BEAM GUARDRAIL
STA. 3+22 - 3+22, LT.
STA. 3+41 - 3+58, RT.
STA. 4+37 - 4+55, LT.
STA. 4+66 - 4+70, RT.

ITEM 621.80 - REMOVAL AND DISPOSAL OF GUARDRAIL
STA. 2+82 - 3+72, LT.
STA. 3+11 - 3+97, RT.
STA. 4+04 - 4+43, LT.
STA. 4+27 - 5+13, RT.

FOR R.O.W. USE ONLY
LINES SHOWN ON THIS PLAN AS EXISTING PROPERTY LINES P/L ARE BELIEVED TO BE ACCURATE BUT SHOULD NOT BE RELIED UPON FOR PURPOSES UNRELATED TO THE STATE OF VERMONT'S ACQUISITION OF LAND AND RIGHTS FOR THIS PROJECT.

PROJECT NAME: WOODSTOCK
PROJECT NUMBER: BRF 0151(21)
FILE NAME: r10c426lay.dgn
PROJECT LEADER: R. YOUNG
DESIGNED BY: STANTEC
R.O.W. LAYOUT SHEET 1 OF 1
PLOT DATE: 14-JUL-2016
DRAWN BY: A. EGIZI
CHECKED BY: R. CLOUTIER
SHEET 4 OF 13

FOR EXISTING BRIDGE INFORMATION, SEE PRELIMINARY INFORMATION SHEET 2

GPS CONTROL POINTS

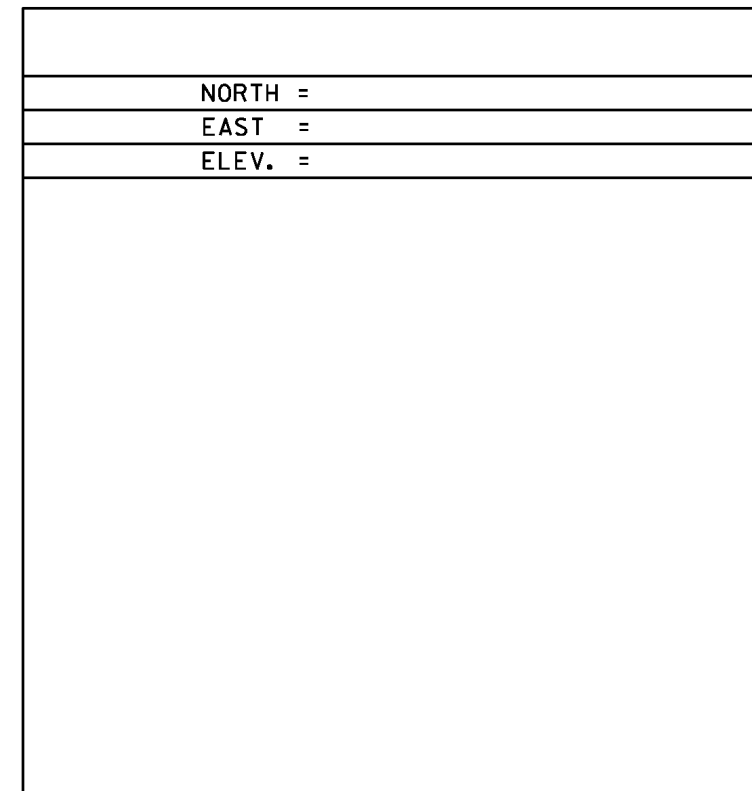
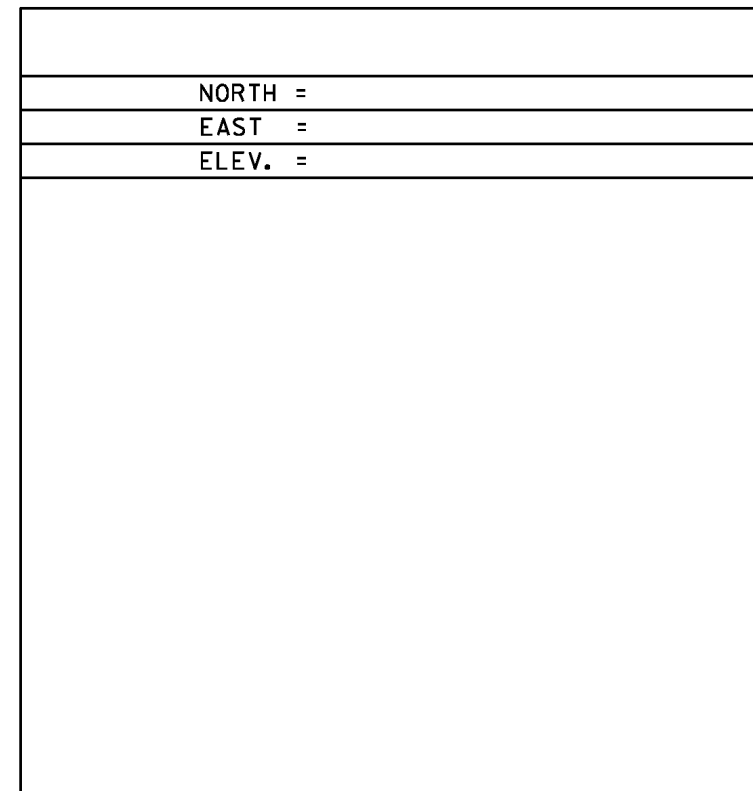
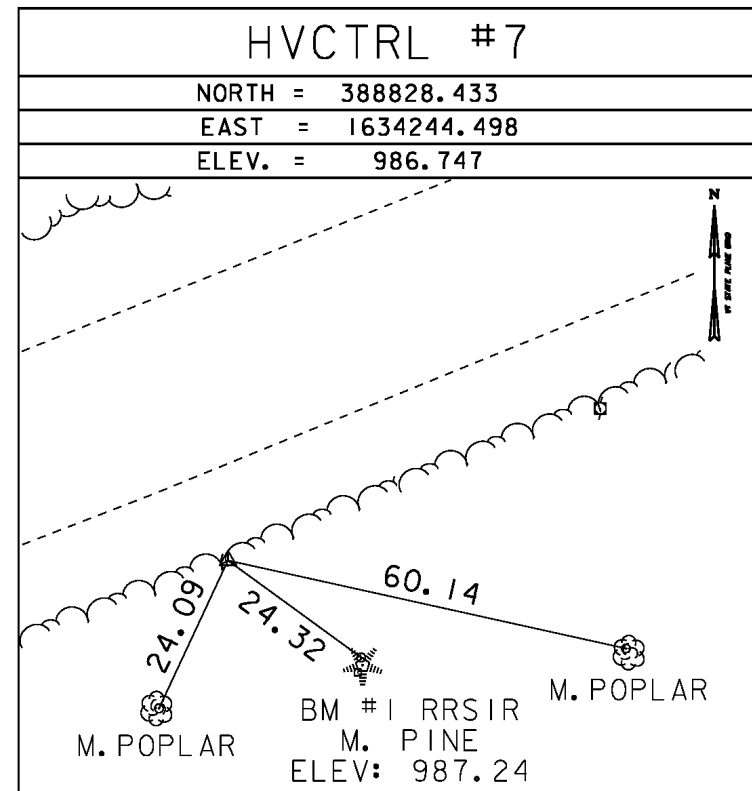
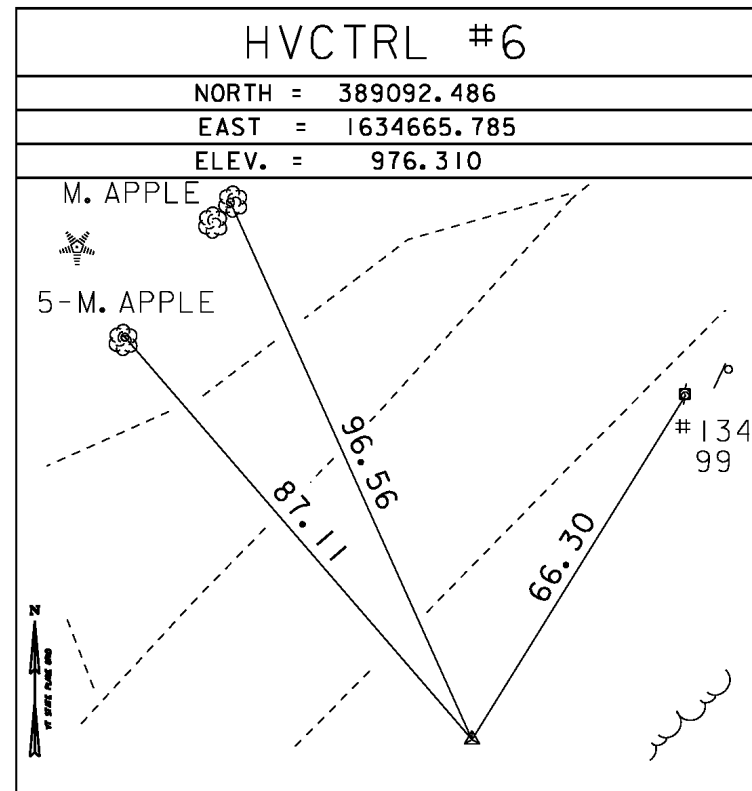
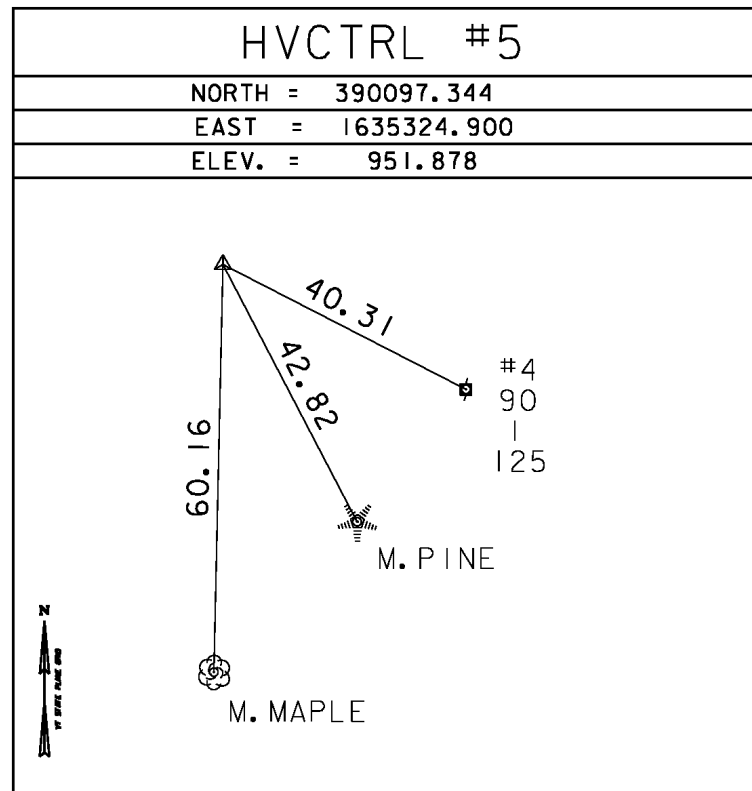
HVCTRL #1
 KEDRON AZ MK
 NORTH = 392626.055
 EAST = 1636526.218
 ELEV. = 855.969

HVCTRL #2
 KEDRON
 NORTH = 390970.727
 EAST = 1636074.631
 ELEV. = 902.557

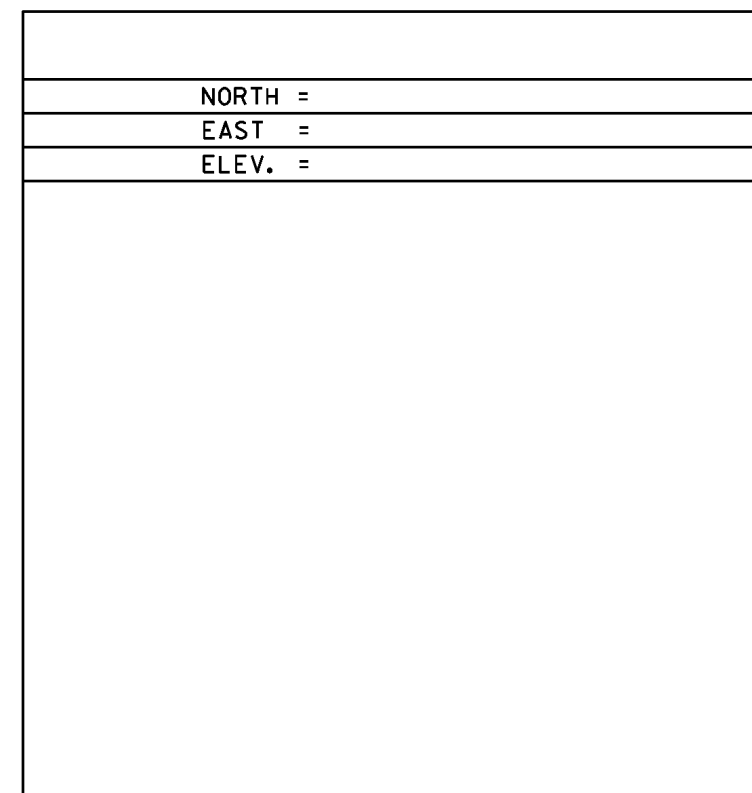
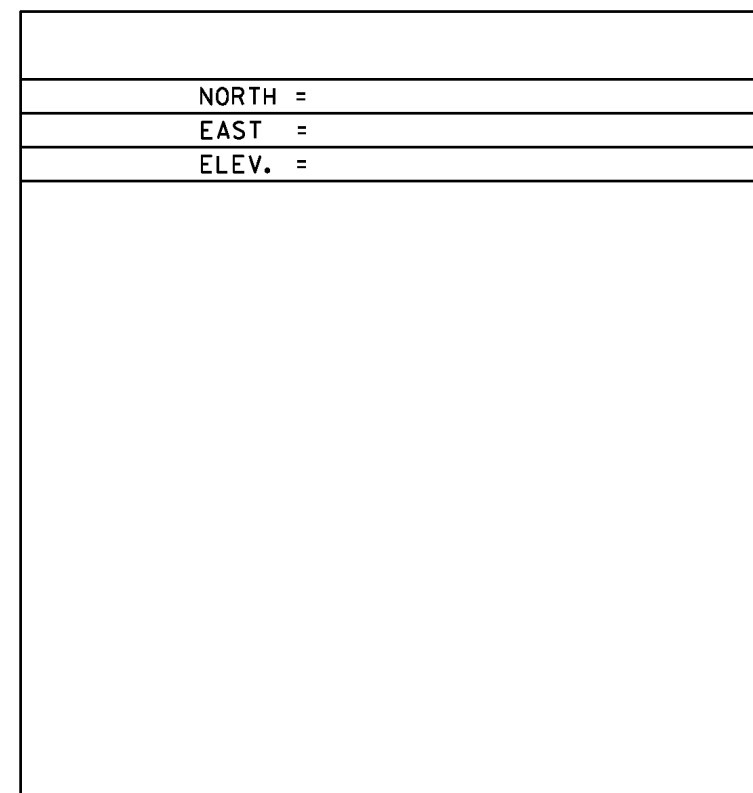
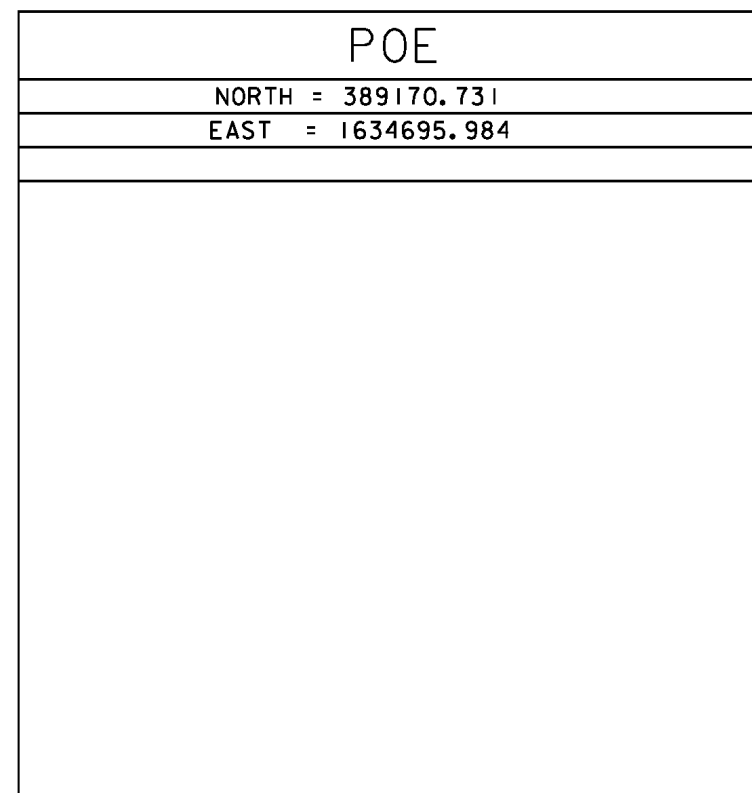
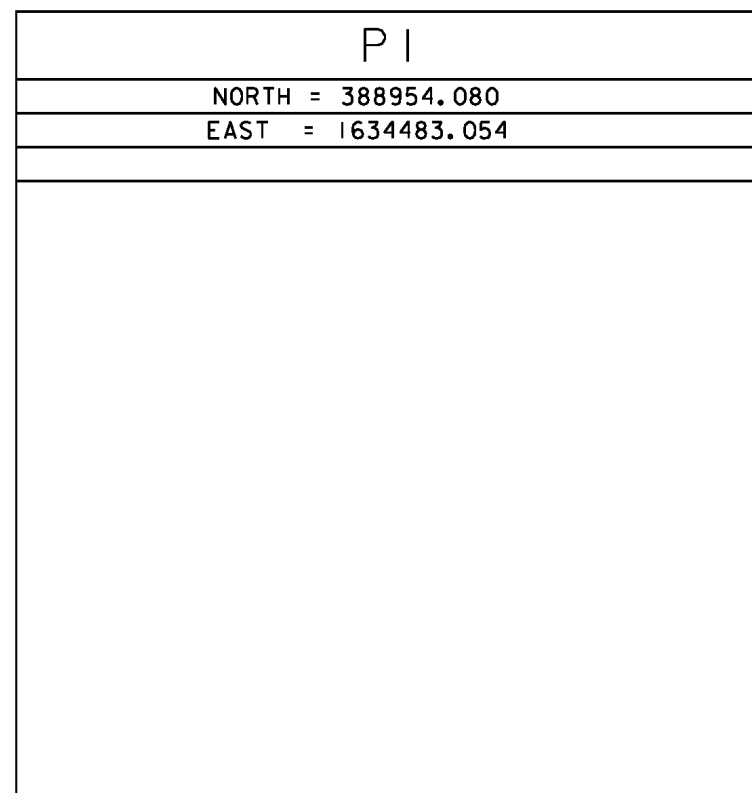
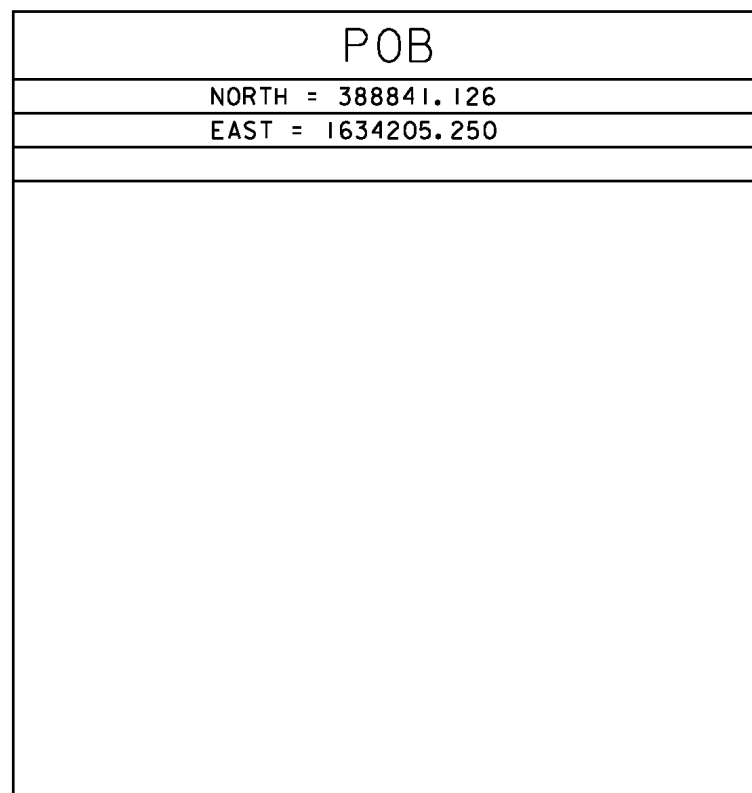
GENERAL LOCATION, WOODSTOCK, VT. TO REACH FROM THE INTERSECTION OF VT ROUTE 106 AND U.S. ROUTE 4 IN WOODSTOCK, GO SOUTH ALONG ROUTE 106 FOR 3.35 MILES (5.39 KM) TO THE MARK ON THE LEFT, SET IN THE TOP OF THE CONCRETE ABUTMENT AT THE SOUTHEAST CORNER OF THE BRIDGE OVER THE KEDRON BROOK. THE MARK IS 5.55 M (18.21 FT) EAST OF THE CENTERLINE OF ROUTE 106, 3.5 M (11.5 FT) SOUTHWEST OF THE END OF THE WINGWALL, 0.45 M (1.48 FT) NORTHWEST OF THE SOUTHEAST FACE OF THE ABUTMENT, 0.2 M (0.7 FT) SOUTHEAST OF THE NORTHWEST FACE OF THE ABUTMENT, AND 0.85 M (2.79 FT) NORTH OF A FIBERGLASS WITNESS POST.

GENERAL LOCATION, WOODSTOCK, VT. TO REACH FROM THE INTERSECTION OF VT ROUTE 106 AND U.S. ROUTE 4 IN WOODSTOCK, GO SOUTH ALONG ROUTE 106 FOR 3.6 MILES (5.8 KM) TO THE MARK ON THE RIGHT. THE MARK IS A FENO MONUMENT SET FLUSH WITH GROUND SURFACE. IT IS 37.8 M (124.0 FT) SOUTH OF POLE NO. 81/116, 15.3 M (50.2 FT) NORTH OF POLE NO. 117/82, 0.8 M (2.6 FT) WEST OF AND ABOUT 0.4 M (1.3 FT) LOWER THAN THE WEST EDGE OF PAVEMENT OF ROUTE 106, AND 0.6 M (2.0 FT) EAST OF THE NORTHEAST CORNER OF A CONCRETE HEADWALL AND A FIBERGLASS WITNESS POST.

TRAVERSE TIES



ALIGNMENT TIES



DATUM	
VERTICAL	NAVD 88
HORIZONTAL	NAD 83 (92)
ADJUSTMENT	COMPASS

PROJECT NAME: WOODSTOCK	
PROJECT NUMBER: BRP 015(21)	
FILE NAME: r10c426t1e.dgn	PLOT DATE: 08-OCT-2014
PROJECT LEADER: R. YOUNG	DRAWN BY: STANTEC
DESIGNED BY: STANTEC	CHECKED BY: STANTEC
TIE SHEET	SHEET 8 OF 13