

Original Drawing - Ink on polymer meeting the requirements of 27 V.S.A. § 1403

HVCTRL #1 389174.4977 N 1634481.8006 E ELEV: 1005.44'	HVCTRL #2 388828.4329 N 1634244.4975 E ELEV: 986.75'	HVCTRL #3 388900.4009 N 1634403.6064 E ELEV: 986.32'
--	---	---

HVCTRL #4 388963.9474 N 1634531.8644 E ELEV: 974.44'	HVCTRL #5 389092.4860 N 1634665.7851 E ELEV: 976.31'
---	---

ITEM 656.85 - TREE PROTECTION
STA. 4+26 LT. - 5+40, LT.

ITEM 621.51 - MANUFACTURED TERMINAL SECTION, TANGENT (BEAT)

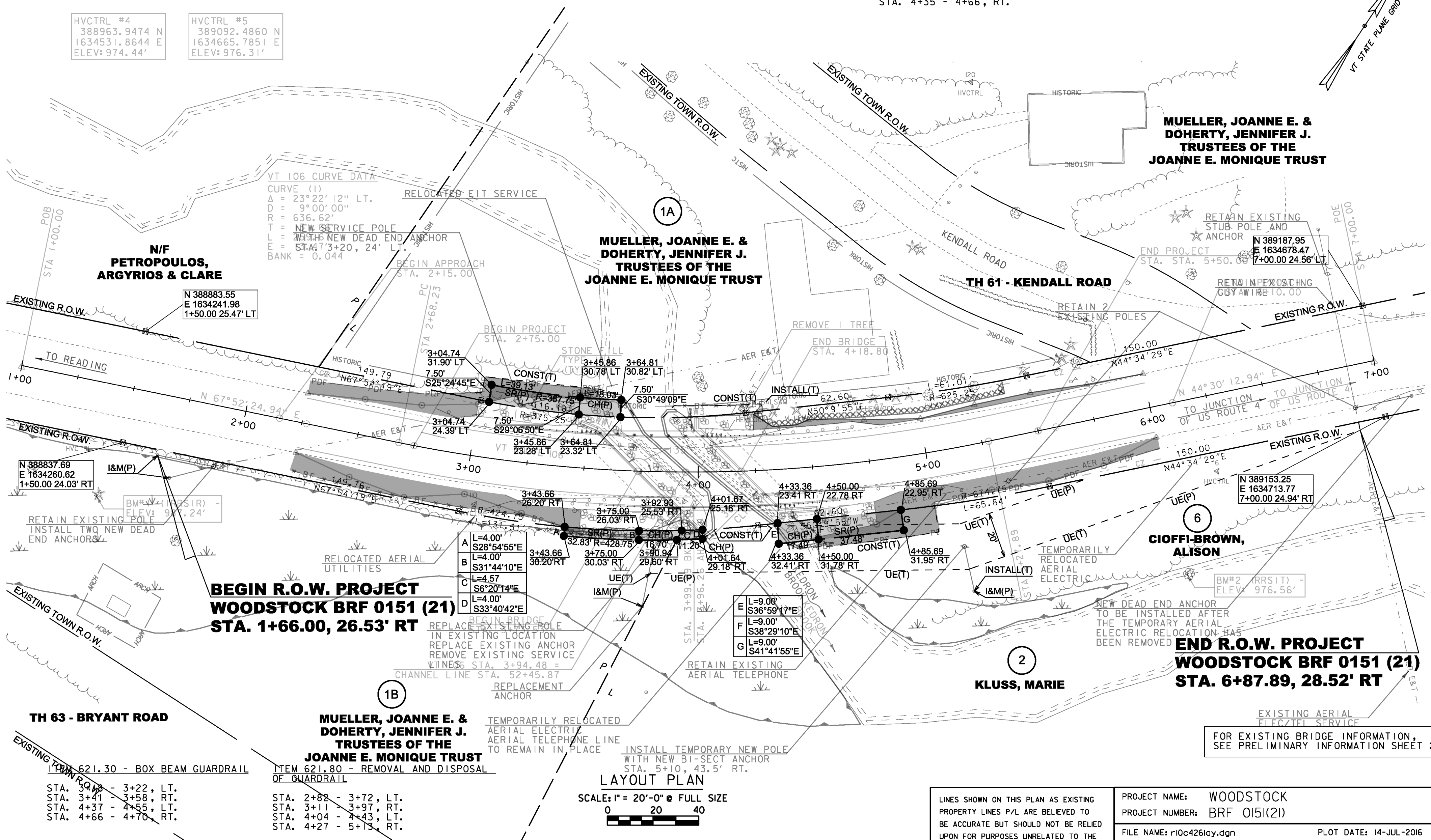
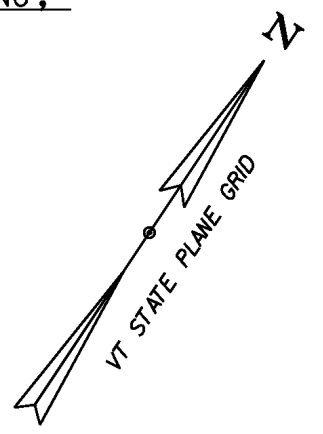
ITEM 621.725 - GUARDRAIL APPROACH SECTION, GALVANIZED 3 RAIL BOX BEAM

ITEM 210.10 - COLD PLANING, BITUMINOUS PAVEMENT

STA. 3+27 - 3+41, RT.
STA. 4+55 - 4+69, LT.

STA. 3+22 - 3+54, LT.
STA. 3+58 - 3+89, RT.
STA. 4+04 - 4+37, LT.
STA. 4+35 - 4+66, RT.

STA. 2+15 - 2+25
STA. 6+00 - 6+10



VT 106 CURVE DATA

CURVE (1)
Δ = 23°22'12" LT.
D = 9°00'00"
R = 636.62'
T = NEW SERVICE POLE
L = WITH NEW DEAD END ANCHOR
E = STA. 473+20, 24' LT.
BANK = 0.044

A	L=4.00'	S28°54'55"E
B	L=4.00'	S31°44'10"E
C	L=4.57'	S6°20'14"E
D	L=4.00'	S33°40'42"E

E	L=9.00'	S36°59'17"E
F	L=9.00'	S38°29'10"E
G	L=9.00'	S41°41'55"E

LAYOUT PLAN
SCALE: 1" = 20'-0" @ FULL SIZE
0 20 40

FOR R.O.W. USE ONLY

PROJECT NAME: WOODSTOCK	FILE NAME: r10c426lay.dgn	PLOT DATE: 14-JUL-2016
PROJECT NUMBER: BRF 0151(21)	PROJECT LEADER: R. YOUNG	DRAWN BY: A. EGIZI
	DESIGNED BY: STANTEC	CHECKED BY: R. CLOUTIER
	R.O.W. LAYOUT SHEET 1 OF 1	SHEET 4 OF 13

FOR EXISTING BRIDGE INFORMATION, SEE PRELIMINARY INFORMATION SHEET 2