

Original Drawing - Ink on polymer meeting the requirements of 27 V.S.A. § 1403

# R.O.W. PLANS

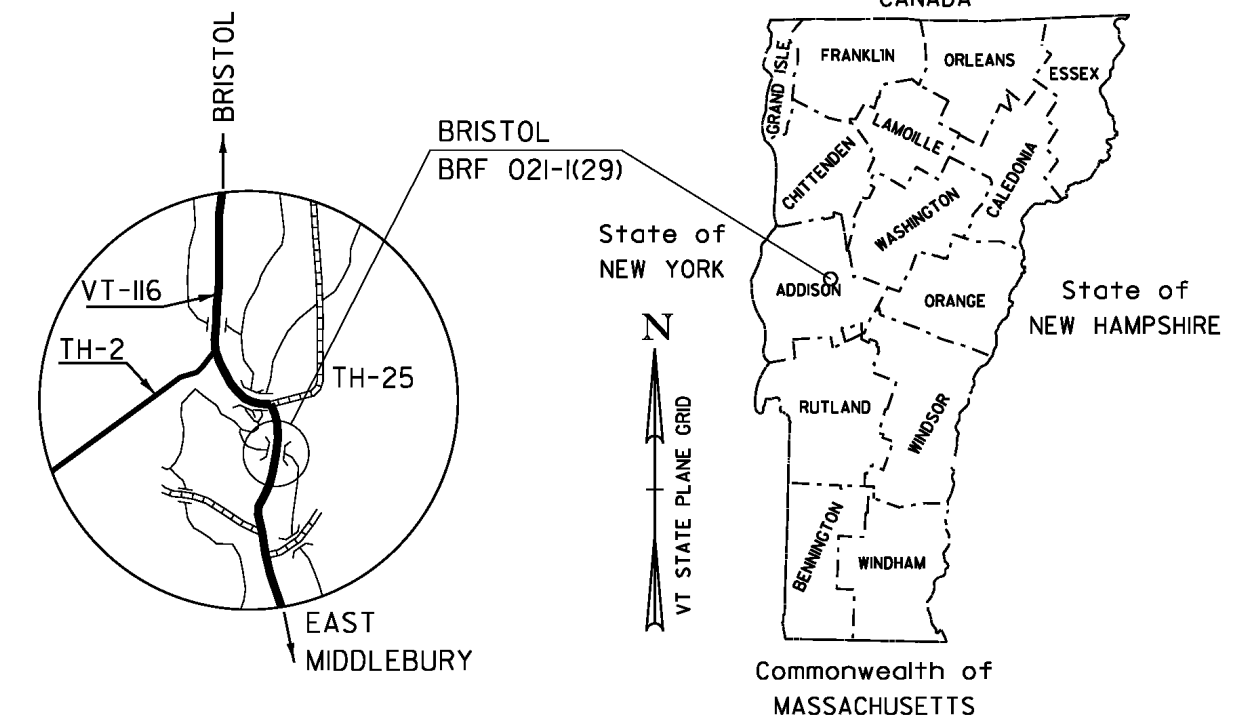
## INDEX OF SHEETS

- 1 TITLE
- 2 LEGEND
- 3 DETAIL SHEET
- 4 LAYOUT SHEET
- 5 PRELIMINARY INFORMATION SHEET
- 6-7 TYPICAL SECTIONS
- 8 TIE SHEET
- 9 PROFILE SHEET
- 10 PLAN & ELEVATION
- 11 EPSC CONSTRUCTION CONDITIONS

# STATE OF VERMONT AGENCY OF TRANSPORTATION



## PROPOSED IMPROVEMENT BRIDGE PROJECT TOWN OF BRISTOL COUNTY OF ADDISON VT ROUTE 116, MINOR ARTERIAL BRIDGE #6



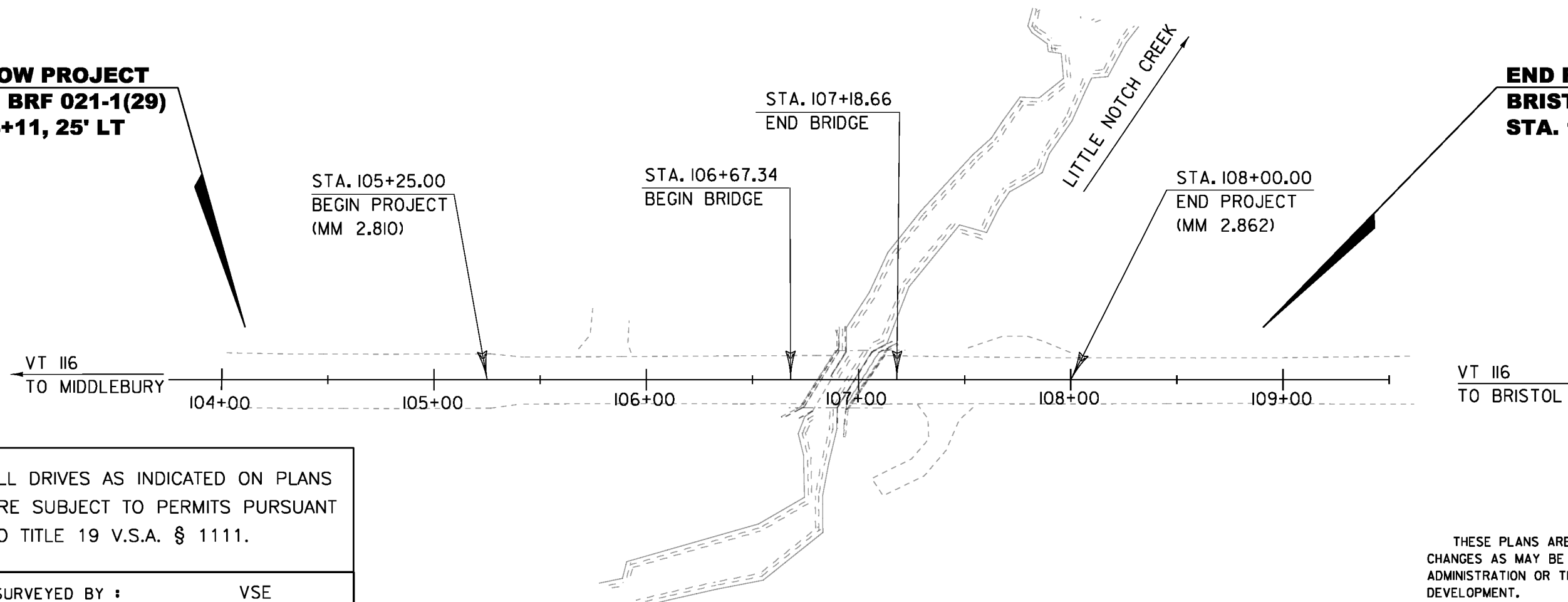
PROJECT LOCATION: BEGINNING AT A POINT ON VT 116 APPROXIMATELY 2.82 MILES NORTHERNLY OF THE BRISTOL-MIDDLEBURY TOWN LINE AND EXTENDING NORTHEASTERLY 0.052 MILES.

LENGTH OF ROADWAY = 223.68 FT  
 LENGTH OF BRIDGE = 51.32 FT  
 LENGTH OF PROJECT = 275.00 FT  
 LENGTH OF ROW PROJECT = 480.00 FT

PROJECT DESCRIPTION: REPLACEMENT OF THE EXISTING BRIDGE INCLUDING RELATED APPROACH ROADWAY AND CHANNEL WORK.

**BEGIN ROW PROJECT  
BRISTOL BRF 021-1(29)  
STA. 104+11, 25' LT**

**END ROW PROJECT  
BRISTOL BRF 021-1(29)  
STA. 108+91, 25' LT**



### CONVENTIONAL SYMBOLS

COUNTY LINE	
TOWN LINE	
LIMITS OF ACCESS	
POINT OF ACCESS	
FENCE LINE	
STONE WALL	
TRAVELED WAY	
GUARD RAIL	
RAILROAD	
SURVEY LINE	
CULVERT	
POWER POLE	
TELEPHONE POLE	
TREES	
CONTROL OF ACCESS	
PROPERTY LINE	
R.O.W. TAKING LINE	
SLOPE RIGHTS	
TOP OF CUT	
TOE OF SLOPE	

ALL DRIVES AS INDICATED ON PLANS ARE SUBJECT TO PERMITS PURSUANT TO TITLE 19 V.S.A. § 1111.

SURVEYED BY : VSE  
 SURVEYED DATE : 1998

DATUM  
 VERTICAL : NAVD 88  
 HORIZONTAL : NAD 83 (1996)

SCALE: 1" = 40'-0"

THESE PLANS ARE SUBJECT TO SUCH ENGINEERING CHANGES AS MAY BE REQUIRED BY THE FEDERAL HIGHWAY ADMINISTRATION OR THE DIRECTOR OF PROGRAM DEVELOPMENT.

CONSTRUCTION IS TO BE CARRIED ON IN ACCORDANCE WITH THESE PLANS AND THE STANDARD SPECIFICATIONS FOR CONSTRUCTION DATED 2011, AS APPROVED BY THE FEDERAL HIGHWAY ADMINISTRATION ON JULY 20, 2011 FOR USE ON THIS PROJECT, INCLUDING ALL SUBSEQUENT REVISIONS AND SUCH REVISED SPECIFICATIONS AND SPECIAL PROVISIONS AS ARE INCORPORATED IN THESE PLANS.

APPROVED ROBERT M. WHITE DATE 10-24-13  
*Chief of Right of Way*

BRISTOL  
 BRF 021-1(29)

ROW SHEET 1 OF 11 SHEETS



Original Drawing - Ink on polymer meeting the requirements of 27 V.S.A. § 1403

**CONSTRUCT 3' WIDE PAVED APRON**  
 STA 105+55.0 LT - STA 106+02.9 LT

**CONSTRUCT GRAVEL DRIVE**  
 STA 105+79.0 LT (16' WIDE)

**BRIDGE RAILING, GALVANIZED 2 RAIL BOX BEAM**

STA 106+73.3 LT - STA 107+28.2 LT  
 STA 106+57.8 RT - STA 107+12.7 RT

**CAST-IN-PLACE CONCRETE CURB, TYPE B**

STA 106+20.8 RT - STA 106+60.8 RT  
 STA 106+35.3 LT - STA 106+75.2 LT  
 STA 107+10.8 RT - STA 107+50.7 RT  
 STA 107+25.2 LT - STA 107+65.2 LT

**STEEL BEAM GUARDRAIL, GALVANIZED**

STA 105+94.2 LT - STA 106+44.2 LT  
 STA 105+28.7 RT - STA 106+28.7 RT  
 STA 107+57.3 LT - STA 108+19.8 LT  
 STA 107+41.8 RT - STA 107+79.3 RT

**ANCHOR FOR STEEL BEAM RAIL**

STA 106+00.5 LT  
 STA 105+35.0 RT  
 STA 108+13.4 LT  
 STA 107+73.0 RT

**BEGIN ROW PROJECT**  
**104+11, 25' LT**

STA 104+00.00  
 BEGIN APPROACH  
 MATCH EXISTING

N=581194.15  
 E=1485127.44  
 104+00.00, 24.86'LT

N87°26'55"W  
 15.34'  
 104+50.00  
 24.66'LT

104+50.00  
 40.00'LT

CONSTRUCTION  
 LIMITS (TYP)

N02°33'05"E  
 253.16'

STA 106+67.34  
 END ROADWAY  
 BEGIN BRIDGE

107+03.16  
 40.00'LT

N42°25'15"W  
 21.96'

REMOVE &  
 REPLACE(T)

106+87.63  
 24.48'LT

CONST(T)

CONST(T)

CONST(T)

DIT, DR  
 (P)

108+50.00  
 40.00'LT

APPROXIMATE LOCATION OF  
 EXISTING AERIAL TELEPHONE  
 UTILITY

TO  
 N=582093.26  
 E=1485167.18  
 PROJ. STP F 021-1(15)  
 113+00.00, 25.18'LT

EXISTING R. O. W.

108+50.00  
 24.67'LT

N02°29'08"E

VT 116  
 TO MIDDLEBURY

104+00

105+00

106+00

106+58.51  
 25.05'RT

107+00

108+00

109+00

VT 116  
 TO BRISTOL

N02°46'19"E  
 50.00'

CONST(T)

S87°26'55"E  
 20.16'

104+50.00  
 45.00'RT

N02°46'19"E  
 91.36'

CONST(T)

N02°33'05"E  
 160.35'

104+50.00  
 45.00'RT

N02°29'08"E  
 117.16'

CONST(T)

N19°56'52"W  
 52.12'

CONST(T)

N02°29'08"E  
 146.21'

CONST(T)

N02°29'08"E  
 146.21'

CONST(T)

N02°29'08"E  
 146.21'

CONST(T)

N02°29'08"E  
 146.21'

CONST(T)

N02°29'08"E  
 146.21'

CONST(T)

N02°29'08"E  
 146.21'

CONST(T)

N02°29'08"E  
 146.21'

CONST(T)

N02°29'08"E  
 146.21'

CONST(T)

N02°29'08"E  
 146.21'

CONST(T)

N02°29'08"E  
 146.21'

CONST(T)

N02°29'08"E  
 146.21'

CONST(T)

N02°29'08"E  
 146.21'

CONST(T)

N02°29'08"E  
 146.21'

CONST(T)

N02°29'08"E  
 146.21'

CONST(T)

N02°29'08"E  
 146.21'

CONST(T)

STA 103+75.00  
 VT 116 POB

N=581191.95  
 E=1485176.89  
 104+00.00, 24.64'RT

STA 105+25.00  
 END APPROACH  
 BEGIN PROJECT

106+10.35  
 45.00'RT

CHANNEL(P)

**THOMAS, TERRENCE E.**

BM 10  
 SIR S. ASH  
 EL. 329.107

STA 108+00.00  
 END PROJECT  
 BEGIN APPROACH

STA 109+25.00  
 END APPROACH  
 MATCH EXISTING

108+50.00  
 24.83'RT

CONST(T)

S87°26'55"E  
 20.17'

108+50.00  
 45.00'RT

STA 109+50.00  
 VT 116 POE

TO  
 N=582091.05  
 E=1485216.63  
 PROJ. STP F 021-1(15)  
 113+00.00, 24.32'RT

FLOODED  
 AREA

**EXISTING BRIDGE DATA**

SIMPLE SPAN CONCRETE SLAB SUPERSTRUCTURE  
 WITH ASPHALT OVERLAY

CAST-IN-PLACE CONCRETE ABUTMENTS AND WINGWALLS

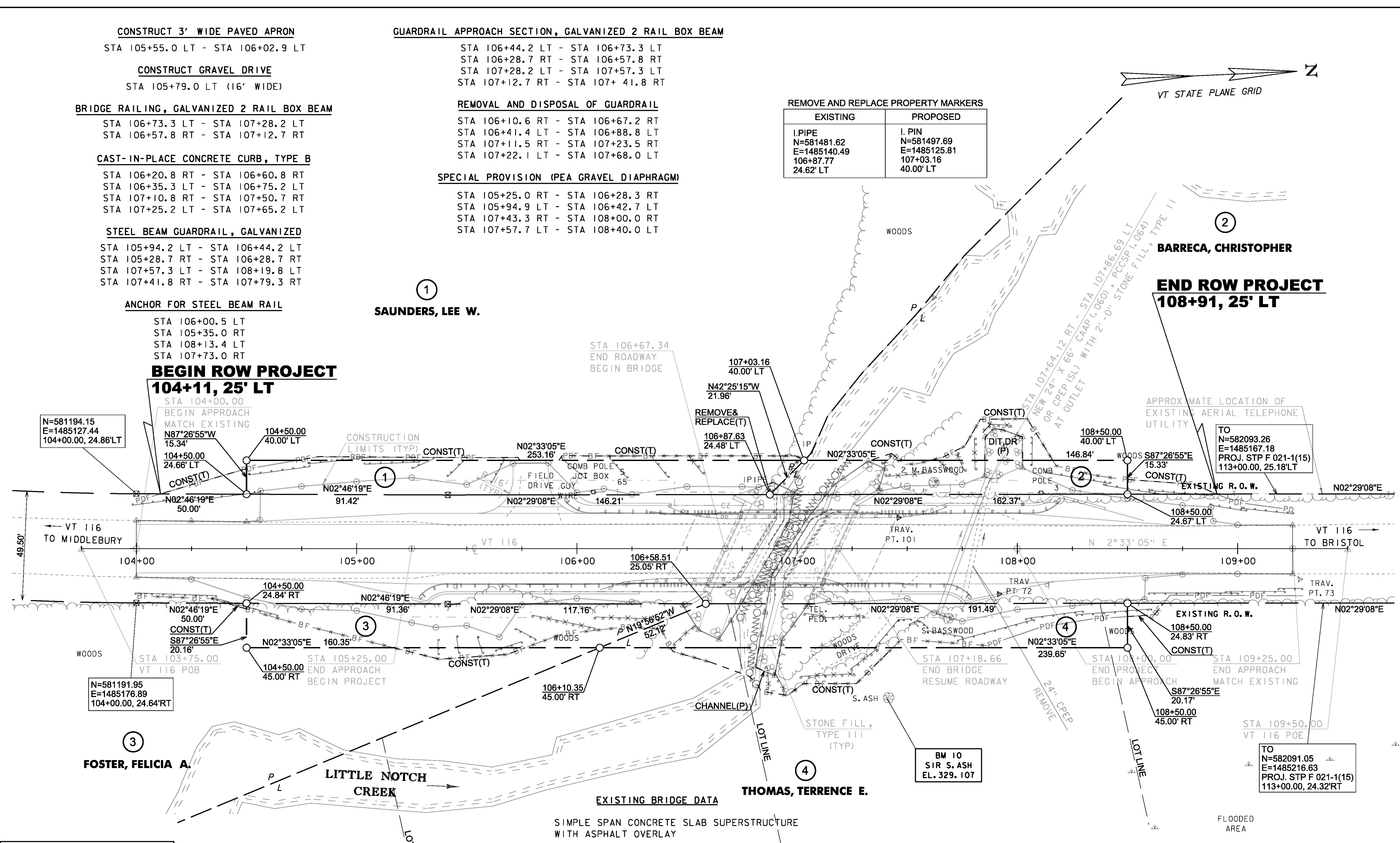
BRIDGE LENGTH: 24'  
 BRIDGE WIDTH (FASCIA TO FASCIA): 28.6'

SCALE 1" = 20' - 0"  
 20 0 20

LINES SHOWN ON THIS PLAN AS EXISTING  
 PROPERTY LINES P/L ARE BELIEVED TO  
 BE ACCURATE BUT SHOULD NOT BE RELIED  
 UPON FOR PURPOSES UNRELATED TO THE  
 STATE OF VERMONT'S ACQUISITION OF LAND  
 AND RIGHTS FOR THIS PROJECT.

**FOR R.O.W.  
 USE ONLY**

PROJECT NAME: BRISTOL  
 PROJECT NUMBER: BRF 021-1(29)  
 FILE NAME: r10b094lay.dgn  
 PROJECT LEADER: C. CARLSON  
 DESIGNED BY: EVANS-MONGEON  
 ROW LAYOUT SHEET 1 OF 1  
 PLOT DATE: 24-OCT-2013  
 DRAWN BY: E. PIERCE  
 CHECKED BY: E. PIERCE  
 SHEET 4 OF 11



REMOVE AND REPLACE PROPERTY MARKERS	
EXISTING	PROPOSED
I.P.I.PE N=581481.62 E=1485140.49 106+87.77 24.62' LT	I.PIN N=581497.69 E=1485125.81 107+03.16 40.00' LT

**REMOVAL AND DISPOSAL OF GUARDRAIL**  
 STA 106+10.6 RT - STA 106+67.2 RT  
 STA 106+41.4 LT - STA 106+88.8 LT  
 STA 107+11.5 RT - STA 107+23.5 RT  
 STA 107+22.1 LT - STA 107+68.0 LT

**SPECIAL PROVISION (PEA GRAVEL DIAPHRAGM)**  
 STA 105+25.0 RT - STA 106+28.3 RT  
 STA 105+94.9 LT - STA 106+42.7 LT  
 STA 107+43.3 RT - STA 108+00.0 RT  
 STA 107+57.7 LT - STA 108+40.0 LT



1

**SAUNDERS, LEE W.**

2

**BARRECA, CHRISTOPHER**

**END ROW PROJECT**  
**108+91, 25' LT**

3

**FOSTER, FELICIA A.**

4

**LITTLE NOTCH  
 CREEK**

LOTLINE

LOTLINE

LOTLINE

Original Drawing - Ink on polymer meeting the requirements of 27 V.S.A. § 1403

GPS CONTROL POINTS

**HVCTRL #1**

CGS TRIANGULATION STATION DISC  
 "BRISTOL 2 1970"  
 NORTH = 595643.717  
 EAST = 1485447.780  
 ELEV. = 577.427

STATION IS LOCATED ABOUT 0.8 KM (0.5 MILE) WEST OF CENTER OF BRISTOL, IN THE WEST ANGLE OF THE T-INTERSECTION OF STATE HIGHWAY 17 AND A MACADAM ROAD RUNNING NORTH, UP ON A LOW CUTBANK, IN SOUTHWEST CORNER OF SCHOOL PLAYGROUND, FORMERLY BRISTOL AIRPORT. TO REACH STATION FROM THE MAIN INTERSECTION IN CENTER OF BRISTOL, GO WEST ON STATE HIGHWAY 17 FOR 0.97 KM (0.6 MILE) TO STATION ON RIGHT, WHERE THE HIGHWAY BEGINS TO CURVE LEFT, DOWNGRADE. STATION MARK IS A STANDARD DISK STAMPED BRISTOL 2 1910, SET IN TOP OF A 0.25 m (10 INCH) DIAMETER, CONCRETE MONUMENT FLUSH WITH THE GROUND. IT IS 21 m (69 FEET) NORTHWEST OF CENTER LINE OF HIGHWAY 17, 13.4 m (44 FEET) WEST-NORTHWEST OF CENTER LINE OF MACAOAM SIOE ROAO, 1.4 m (4.5 FEET) NORTH OF POWER POLE 29, 6.64 m (21.8 FEET) NORTH OF A FIRE HYORANT, AND 0.46 m (1.5 FEET) SOUTHWEST OF A METAL WITNESS POST

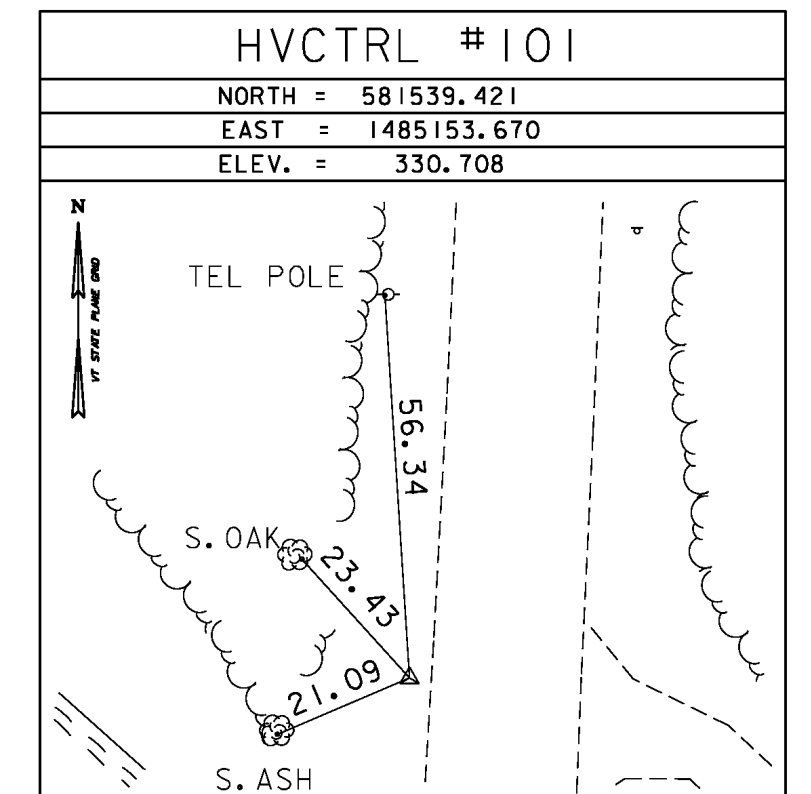
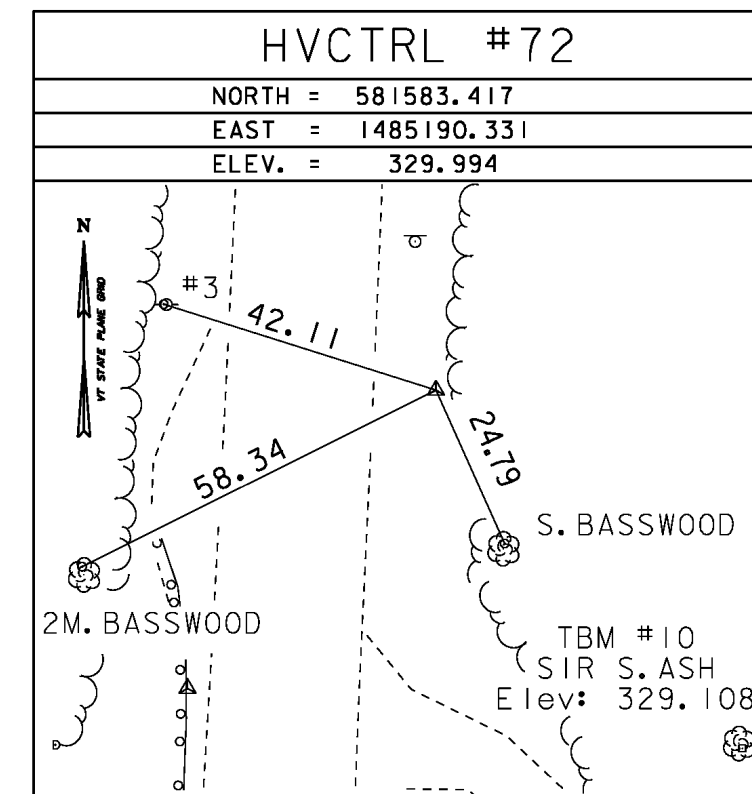
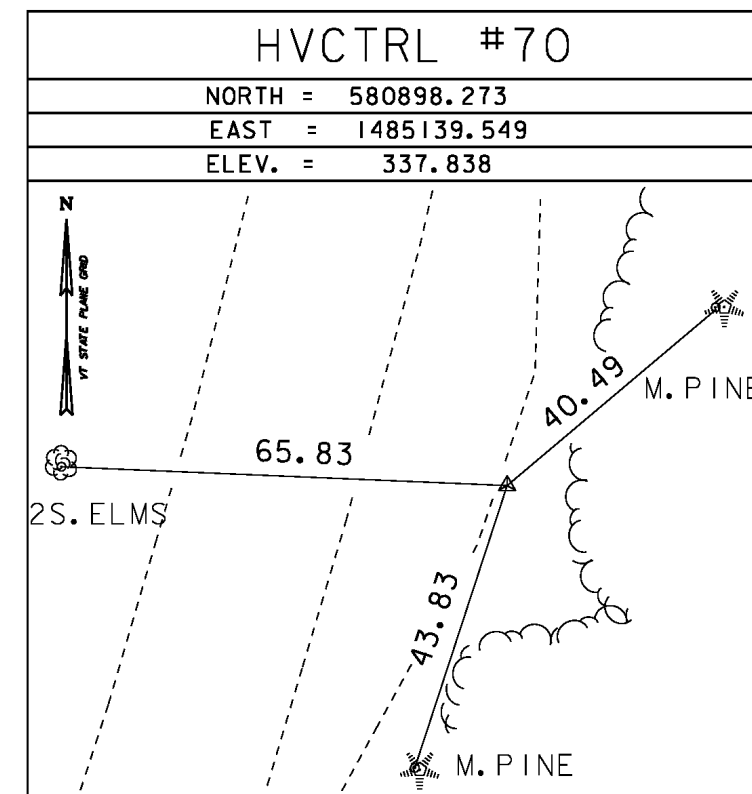
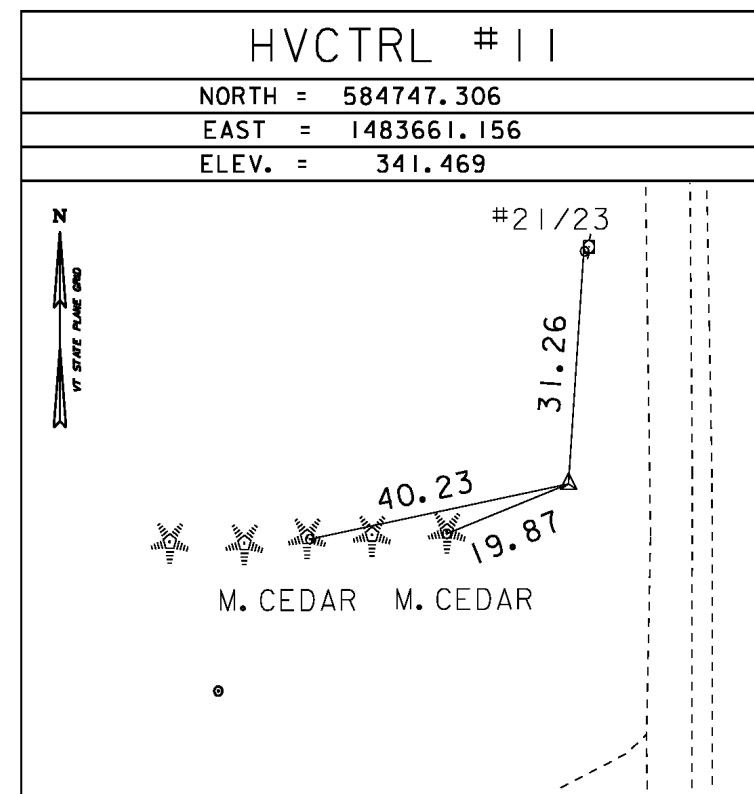
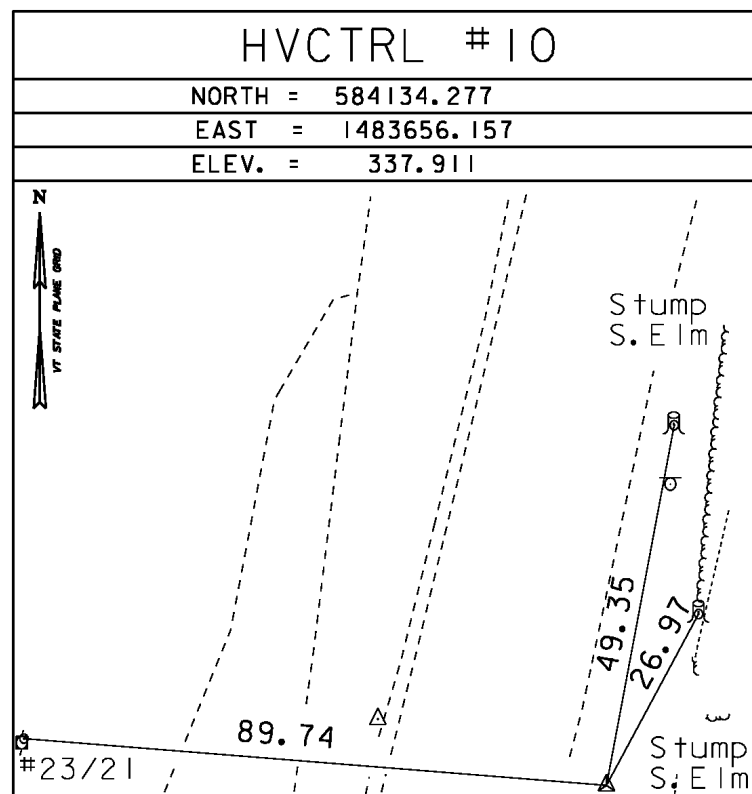
**HVCTRL #2**

STANDARD DISK STAMPED  
 "POWERLINE 1991"  
 NORTH = 592458.116  
 EAST = 1466209.098  
 ELEV. = 425.521

GENERAL LOCATION, NEW HAVEN, VT. TO REACH FROM THE INTERSECTION OF VT ROUTE 17 EAST AND US ROUTE 7 IN NEW HAVEN JUNCTION, GO EAST ALONG VT ROUTE 17 FOR 1.4 KM (0.9 MILE) TO A POWERLINE CROSSING AND THE MARK ON THE LEFT. THE MARK IS, SET FLUSH WITH GROUND SURFACE IN THE TOP OF A 25 cm (1 FOOT) DIAMETER CONCRETE MONUMENT. IT IS 12.7 m (41.7 FEET) NORTH OF AND ABOUT LEVEL WITH THE CENTERLINE OF VT ROUTE 17, 3.7 m (12.1 FEET) EAST OF POLE NO.3, 15.3 m (50.2 FEET) WEST OF POLE NO.303, AND 0.8 m (2.6 FEET) NORTH OF A FIBERGLASS WITNESS POST.

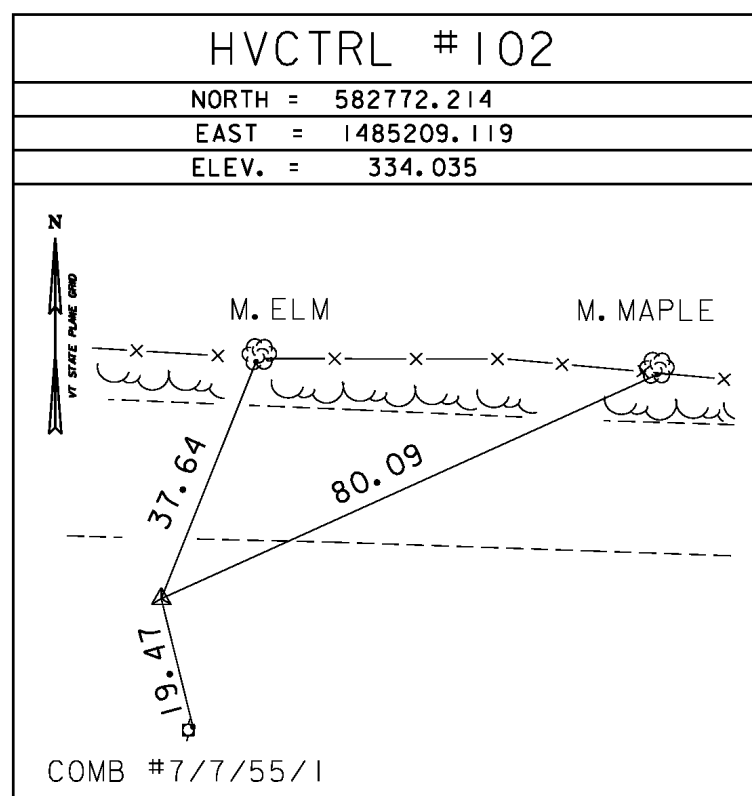
\* Description provided by the Vermont Agency of Transportation Geodetic Survey Unit

TRAVERSE TIES



\* MAIN TRAVERSE COMPLETED: MAY 10, 1999 BY: CLD

ALIGNMENT TIES



	STATION	NORTHING	EASTING
POB	103+75.00	581168.0686	1485151.1601
POE	109+50.00	581742.4986	1485176.7565
Tangent Direction:	N 2°33'05" E		
Tangent Length:	575.00		

DATUM	
VERTICAL	NAVD 88
HORIZONTAL	NAD 83 (96)
ADJUSTMENT	Unknown

PROJECT NAME:	BRISTOL
PROJECT NUMBER:	BRF 021-1(29)
FILE NAME:	si0b0941e.dgn
PROJECT LEADER:	C. CARLSON
DESIGNED BY:	EVANS-MONGEON
TIE SHEET	
PLOT DATE:	24-OCT-2013
DRAWN BY:	R. BULLOCK
CHECKED BY:	EVANS-MONGEON
SHEET	8 OF 11