

Original Drawing - Ink on polymer meeting the requirements of 27 V.S.A. § 1403

**CONSTRUCT 3' WIDE PAVED APRON**

STA 105+55.0 LT - STA 106+02.9 LT

**CONSTRUCT GRAVEL DRIVE**

STA 105+79.0 LT (16' WIDE)

**BRIDGE RAILING, GALVANIZED 2 RAIL BOX BEAM**

STA 106+73.3 LT - STA 107+28.2 LT  
STA 106+57.8 RT - STA 107+12.7 RT

**CAST-IN-PLACE CONCRETE CURB, TYPE B**

STA 106+20.8 RT - STA 106+60.8 RT  
STA 106+35.3 LT - STA 106+75.2 LT  
STA 107+10.8 RT - STA 107+50.7 RT  
STA 107+25.2 LT - STA 107+65.2 LT

**STEEL BEAM GUARDRAIL, GALVANIZED**

STA 105+94.2 LT - STA 106+44.2 LT  
STA 105+28.7 RT - STA 106+28.7 RT  
STA 107+57.3 LT - STA 108+19.8 LT  
STA 107+41.8 RT - STA 107+79.3 RT

**ANCHOR FOR STEEL BEAM RAIL**

STA 106+00.5 LT  
STA 105+35.0 RT  
STA 108+13.4 LT  
STA 107+73.0 RT

**BEGIN ROW PROJECT**

**104+11, 25' LT**

STA 104+00.00

BEGIN APPROACH

MATCH EXISTING

N87°26'55"W

15.34'

104+50.00

24.66' LT

CONST(T)

N02°46'19"E

50.00'

VT 116

TO MIDDLEBURY

104+00

105+00

106+00

107+00

108+00

109+00

VT 116

TO BRISTOL

104+50.00

24.84' RT

N02°46'19"E

50.00'

CONST(T)

S87°26'55"E

20.16'

STA 103+75.00

VT 116 POB

N02°33'05"E

160.35'

104+50.00

45.00' RT

CONST(T)

N02°29'08"E

117.16'

N19°56'52"W

52.12'

106+10.35

45.00' RT

CONST(T)

N02°29'08"E

191.49'

N02°33'05"E

239.65'

CONST(T)

N02°29'08"E

108+50.00

24.83' RT

EXISTING R.O.W.

108+50.00

24.67' LT

CONST(T)

S87°26'55"E

20.17'

108+50.00

45.00' RT

CONST(T)

N02°29'08"E

109+00.00

END PROJECT

BEGIN APPROACH

109+25.00

END APPROACH

MATCH EXISTING

109+50.00

VT 116 POE

N02°29'08"E

TO

N=582091.05

E=1485216.63

PROJ. STP F 021-1(15)

113+00.00, 24.32' RT

**GUARDRAIL APPROACH SECTION, GALVANIZED 2 RAIL BOX BEAM**

STA 106+44.2 LT - STA 106+73.3 LT

STA 106+28.7 RT - STA 106+57.8 RT

STA 107+28.2 LT - STA 107+57.3 LT

STA 107+12.7 RT - STA 107+ 41.8 RT

**REMOVAL AND DISPOSAL OF GUARDRAIL**

STA 106+10.6 RT - STA 106+67.2 RT

STA 106+41.4 LT - STA 106+88.8 LT

STA 107+11.5 RT - STA 107+23.5 RT

STA 107+22.1 LT - STA 107+68.0 LT

**SPECIAL PROVISION (PEA GRAVEL DIAPHRAGM)**

STA 105+25.0 RT - STA 106+28.3 RT

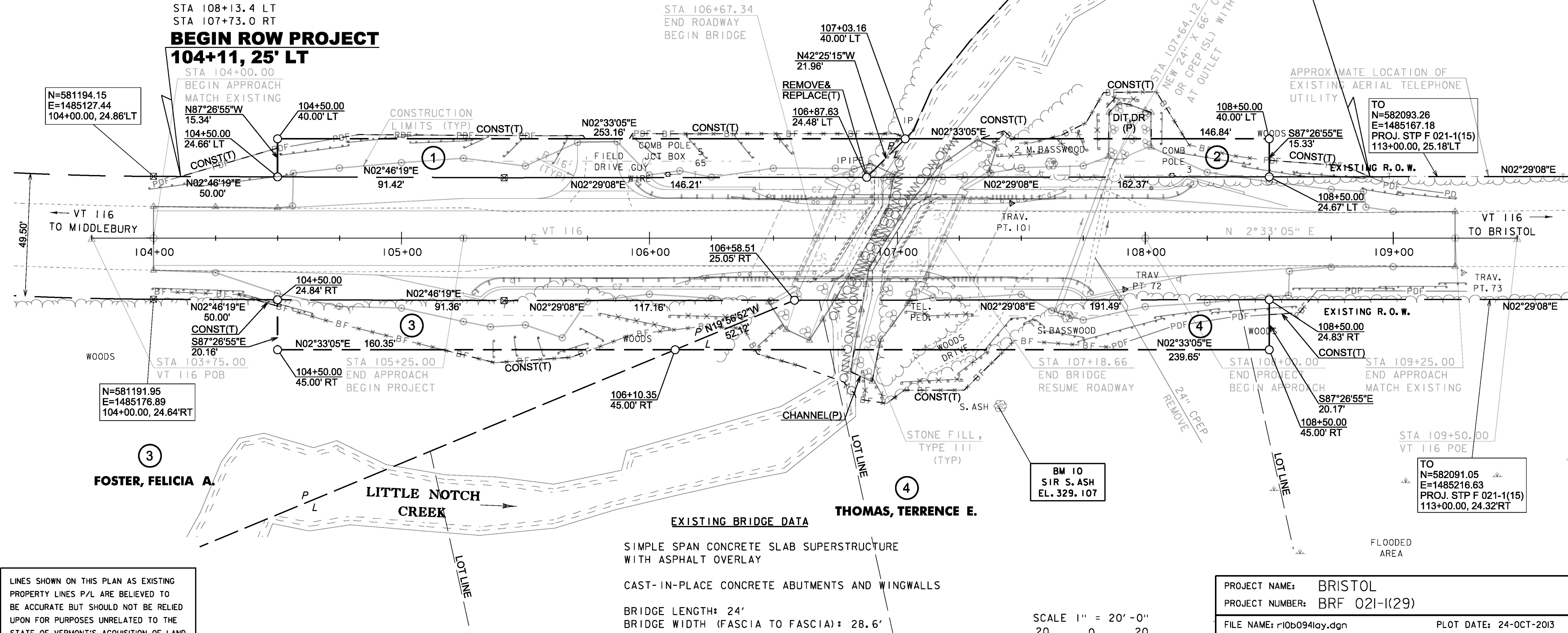
STA 105+94.9 LT - STA 106+42.7 LT

STA 107+43.3 RT - STA 108+00.0 RT

STA 107+57.7 LT - STA 108+40.0 LT

**REMOVE AND REPLACE PROPERTY MARKERS**

EXISTING	PROPOSED
I.P.I.PE	I.PIN
N=581481.62	N=581497.69
E=1485140.49	E=1485125.81
106+87.77	107+03.16
24.62' LT	40.00' LT



**FOSTER, FELICIA A.**

**SAUNDERS, LEE W.**

**BARRECA, CHRISTOPHER**

**END ROW PROJECT**  
**108+91, 25' LT**

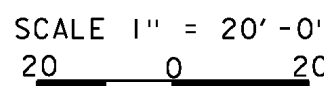
**THOMAS, TERENCE E.**

**EXISTING BRIDGE DATA**

SIMPLE SPAN CONCRETE SLAB SUPERSTRUCTURE  
WITH ASPHALT OVERLAY

CAST-IN-PLACE CONCRETE ABUTMENTS AND WINGWALLS

BRIDGE LENGTH: 24'  
BRIDGE WIDTH (FASCIA TO FASCIA): 28.6'



LINES SHOWN ON THIS PLAN AS EXISTING  
PROPERTY LINES P/L ARE BELIEVED TO  
BE ACCURATE BUT SHOULD NOT BE RELIED  
UPON FOR PURPOSES UNRELATED TO THE  
STATE OF VERMONT'S ACQUISITION OF LAND  
AND RIGHTS FOR THIS PROJECT.

**FOR R.O.W.  
USE ONLY**

PROJECT NAME: BRISTOL	FILE NAME: r10b094lay.dgn	PLOT DATE: 24-OCT-2013
PROJECT NUMBER: BR F 021-1(29)	PROJECT LEADER: C. CARLSON	DRAWN BY: E. PIERCE
	DESIGNED BY: EVANS-MONGEON	CHECKED BY: E. PIERCE
	ROW LAYOUT SHEET 1 OF 1	SHEET 4 OF 11